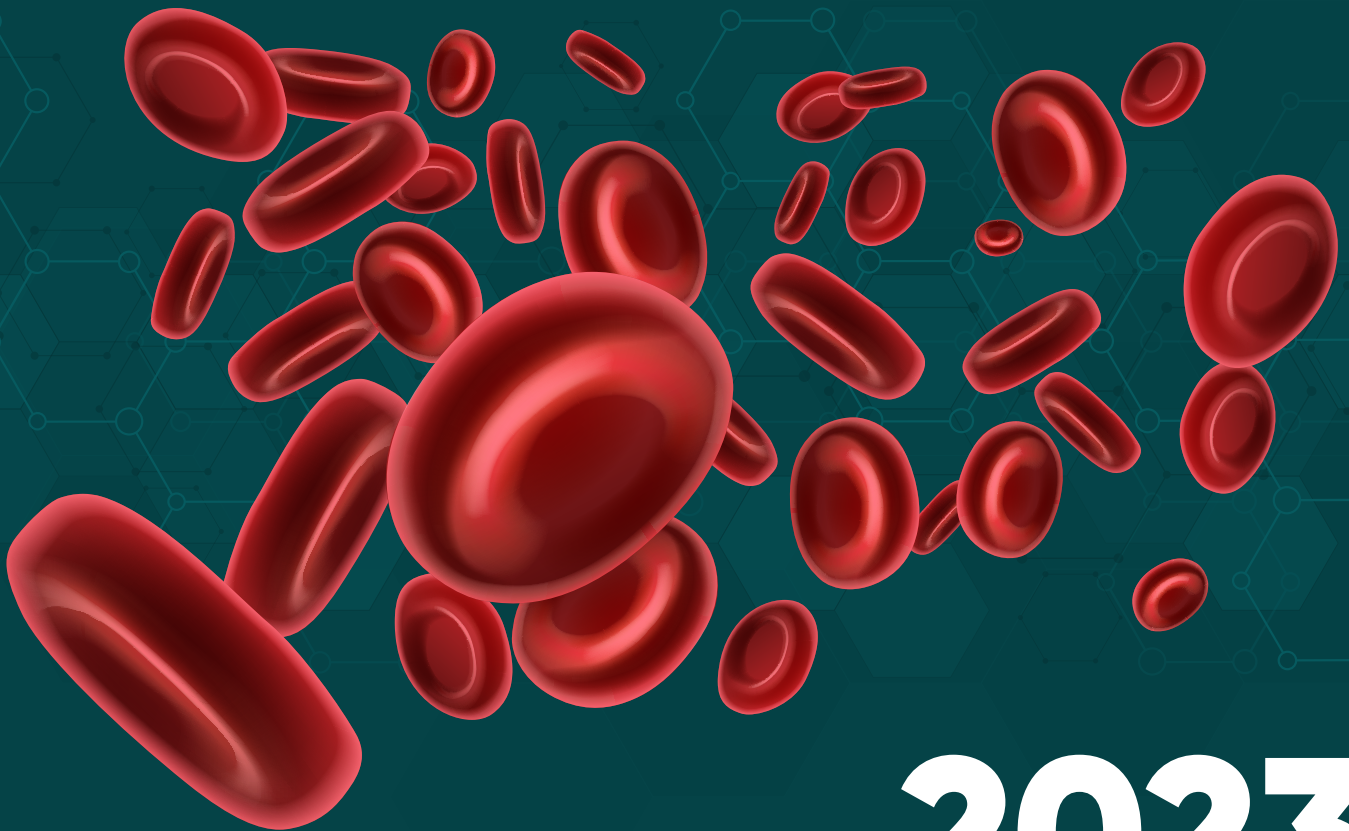




Your essential illustrated coding guide for  
oncology/hematology, including CPT®,  
HCPCS Level II, tips, CPT® to ICD-10  
CrossRef, CCI edits, and RVU information.

CODERS' SPECIALTY GUIDE

# Oncology & Hematology



# 2023

# Contents

Introduction .....	3
General .....	5
Integumentary System .....	15
Respiratory System .....	18
Cardiovascular System .....	19
Hemic and Lymphatic Systems .....	22
Digestive System .....	35
Male Genital System .....	46
Reproductive System .....	47
Maternity Care and Delivery .....	48
Radiology .....	50
Pathology and Laboratory .....	214
Medicine .....	372
Evaluation and Management .....	420
Category III Codes .....	525
Multianalyte Assays .....	544
Proprietary Laboratory Analyses .....	549
HCPCS Level II Codes	
• Medical and Surgical Supplies .....	566
• Administrative, Miscellaneous and Investigational .....	567
• Outpatient PPS .....	568
• Procedures/Professional Services .....	570
• Drugs Administered Other Than Oral Method .....	602
• Chemotherapy Drugs .....	640
• Medical Services .....	677
• Pathology and Laboratory Services .....	688
• Temporary Codes .....	689
• Temporary National Codes (Non-Medicare) .....	703
ICD-10 CrossRef Details .....	709
Modifier Descriptors .....	857
Terminology .....	867
Code Index .....	889

**+10004**

Fine needle aspiration biopsy, without imaging guidance; each additional lesion (List separately in addition to code for primary procedure)

**Clinical Responsibility**

With the patient properly prepared and anesthetized (typically with local anesthesia) and following FNA of an initial lesion, the provider inserts a needle, such as an 18- to 25-gauge needle with an attached syringe, into an additional suspicious lesion or area of tissue and withdraws cells, tissue, or fluid for laboratory analysis. The provider may make several passes to obtain an adequate specimen. The provider then sends the aspirate to the pathology lab for analysis.

**Coding Tips**

For FNA of an initial lesion using imaging guidance, see 10005 (ultrasound), 10007 (fluoroscopy), 10009 (CT), and 10011 (MRI) and +10006, +10008, +10010 and +10012 for each additional lesion respectively.

**Fee Schedule**

**Medicare Fees National** Conversion Factor: 34.8931, Facility: \$43.62, Non Facility: \$52.34, OPPOS Facility: \$27.91, OPPOS Non Facility: \$27.91

**RVU Facility** Work RVU: 0.80, PE RVU: 0.34, Malpractice RVU: 0.11, Total RVU: 1.25

**RVU Non-Facility** Work RVU: 0.80, PE RVU: 0.59, Malpractice RVU: 0.11, Total RVU: 1.50

**Indicators** Preoperative: 0.00, Intraoperative: 0.00, Postoperative: 0.00, Total RVU: 0, Global Period: ZZZ, Radiology Diagnostic Test: 99, Code Status: A, PC/TC Indicator: 0, Endoscopic Base Code: None, MUE: 3

**Modifier Allowances** 22, 52, 53, 58, 59, 76, 77, 78, 79, 80, 81, 82, 99, AQ, AR, AS, GA, GC, GZ, LT, PD, Q6, QJ, RT, SC, XE, XP, XS, XU

**CCI Alerts (version 27.3)**

0213T<sup>1</sup>, 0216T<sup>1</sup>, 10012<sup>1</sup>, 10035<sup>1</sup>, 19281<sup>1</sup>, 19283<sup>1</sup>, 19285<sup>1</sup>, 19287<sup>1</sup>, 36000<sup>1</sup>, 36410<sup>1</sup>, 36591<sup>0</sup>, 36592<sup>0</sup>, 61650<sup>1</sup>, 62324<sup>1</sup>, 62325<sup>1</sup>, 62326<sup>1</sup>, 62327<sup>1</sup>, 64415<sup>1</sup>, 64416<sup>1</sup>, 64417<sup>1</sup>, 64450<sup>1</sup>, 64454<sup>1</sup>, 64486<sup>1</sup>, 64487<sup>1</sup>, 64488<sup>1</sup>, 64489<sup>1</sup>, 64490<sup>1</sup>, 64493<sup>1</sup>, 76000<sup>1</sup>, 76380<sup>1</sup>, 76942<sup>1</sup>, 76998<sup>1</sup>, 77001<sup>1</sup>, 77002<sup>1</sup>, 77012<sup>1</sup>, 77021<sup>1</sup>, 96360<sup>1</sup>, 96365<sup>1</sup>, 96372<sup>1</sup>, 96374<sup>1</sup>, 96375<sup>1</sup>, 96376<sup>1</sup>, 96377<sup>1</sup>, 96523<sup>0</sup>, J2001<sup>1</sup>

**ICD-10 CrossRef**

C00.3, C01, C02.9, C04.1, C06.9, C07, C08.0, C12, C13.9, C15.9, C22.0-C22.4, C22.7, C22.8, C32.1, C32.8, C34.30-C34.32, C43.20-C43.22, C43.30-C43.39, C43.51-C43.59, C43.60-C43.62, C46.0, C50.011-C50.019, C50.111-C50.119, C50.211-C50.219, C50.411-C50.419, C50.811-C50.819, C50.911-C50.919, C51.9, C76.0, C76.1, C77.0, C77.3, C79.2, C79.81, C79.89, C79.9, C82.50, C82.51, C82.55, C82.59, C83.31-C83.35, C84.90, C84.91, C84.95, C84.99, C84.A0, C84.A1, C84.A5, C84.A9, C84.Z0, C84.Z1, C84.Z5, C84.Z9, C85.10, C85.11, C85.15, C85.19, C85.20, C85.21, C85.25, C85.29, C85.80, C85.81, C85.85, C85.89, C85.90, C85.91, C85.95,

C85.99, C86.0, C86.4, C88.8, C94.40-C94.42, C94.6, D03.20-D03.22, D03.30, D03.39, D03.51-D03.59, D03.60-D03.62, D05.00-D05.02, D05.10-D05.12, D05.80-D05.82, D05.90-D05.92, D11.0-D11.9, D17.0, D17.1, D17.20-D17.24, D17.30, D17.39, D17.72, D17.79, D17.9, D19.7, D21.0, D22.5, D22.70-D22.72, D23.5, D23.70-D23.72, D36.0, D36.7, D37.030-D37.039, D44.0-D44.2, D44.9, D47.1, D47.2, D47.9, D47.Z9, D48.0-D48.2, D48.60-D48.62, D48.7, D48.9, D49.0-D49.7, D49.9, D64.9, D75.9, D78.01, D78.02, D78.21, D78.22, D89.2, E01.0-E01.2, E03.4, E03.9, E04.0-E04.9, E06.0, E07.89, E07.9, E35, E36.01, E36.02, E65, E78.71, E89.820-E89.823, G97.31, G97.32, G97.51, G97.52, G97.63, G97.64, H66.10-H66.13, H69.80-H69.83, H93.8X1-H93.8X9, H94.80-H94.83, H95.21, H95.22, H95.41, H95.42, H95.53, H95.54, I42.0-I42.5, I42.8, I42.9, I70.235, I70.245, I70.335, I70.345, I70.435, I70.445, I70.535, I70.545, I70.635, I70.645, I70.735, I70.745, I82.91, I88.1-I88.9, I89.8, I97.410-I97.418, I97.42, I97.610-I97.618, I97.622, I97.640-I97.648, J95.61, J95.62, J95.830, J95.831, J95.862, J95.863, J98.4, K11.20-K11.23, K11.3-K11.6, K11.9, K91.61, K91.62, K91.840, K91.841, K91.870-K91.873, L02.31, L02.415, L02.416, L02.419, L02.91, L03.115, L03.116, L03.119, L03.125, L03.126, L03.129, L03.317, L03.327, L03.90, L03.91, L57.0, L76.01, L76.02, L76.21, L76.22, L76.31-L76.34, L97.501-L97.504, L97.509, L97.511-L97.514, L97.519, L97.521-L97.524, L97.529, L98.3, L98.7, M54.2, M70.20-M70.22, M71.30, M77.10-M77.12, M79.4, M81.0, M96.810, M96.811, M96.830, M96.831, M96.840-M96.843, N60.01-N60.09, N60.11-N60.19, N61.0, N62, N63.0, N63.10-N63.15, N63.20-N63.25, N63.31, N63.32, N63.41, N63.42, N64.1, N64.4, N99.61, N99.62, N99.820, N99.821, N99.840-N99.843, Q18.0-Q18.9, Q87.2, Q87.3, Q87.5, Q87.81, Q87.89, Q89.2, Q89.8, R13.0, R13.10, R18.8, R19.02, R20.8, R20.9, R22.0-R22.2, R22.30-R22.33, R22.40-R22.43, R22.9, R29.4, R59.0-R59.9, R68.89, R69, R90.0, R92.1, R92.8, R99, S90.421D, S90.422D, S90.423D, S90.424D, S90.425D, S90.426D, S90.521D, S90.522D, S90.529D, S90.821D, S90.822D, S90.829D, S90.869A, Y84.4, Z00.6, Z12.89, Z85.21, Z85.3, Z85.6, Z86.79

**10005**

Fine needle aspiration biopsy, including ultrasound guidance; first lesion

**Clinical Responsibility**

With the patient properly prepared and anesthetized (typically with local anesthesia), the provider inserts a needle, such as an 18- to 25-gauge needle with an attached syringe, under ultrasound imaging guidance into a suspicious lesion or area of tissue and withdraws cells, tissue, or fluid for laboratory analysis. The provider may make several passes to obtain an adequate specimen. The provider then sends the aspirate to the pathology lab for analysis.

**Coding Tips**

Report +10006 for each additional lesion in addition to the primary code 10005.

For FNA of an initial lesion using other types of imaging guidance, see 10007 (fluoroscopy), 10009 (CT), and 10011 (MRI) and +10008, +10010 and +10012 for each additional lesion respectively.

If different imaging guidance modalities are used for separate lesions, add modifier 59, Distinct procedural service, to the appropriate primary code.

For FNA without imaging guidance, report 10021 for the initial lesion and +10004 for each additional lesion.

## Fee Schedule

**Medicare Fees National** Conversion Factor: 34.8931, Facility: \$73.62, Non Facility: \$139.22, OPPS Facility: \$50.94, OPPS Non Facility: \$50.94

**RVU Facility** Work RVU: 1.46, PE RVU: 0.50, Malpractice RVU: 0.15, Total RVU: 2.11

**RVU Non-Facility** Work RVU: 1.46, PE RVU: 2.38, Malpractice RVU: 0.15, Total RVU: 3.99

**Indicators** Preoperative: 0.00, Intraoperative: 0.00, Postoperative: 0.00, Total RVU: 0, Global Period: XXX, Radiology Diagnostic Test: 99, Code Status: A, PC/TC Indicator: 0, Endoscopic Base Code: None, MUE: 1

**Modifier Allowances** 22, 51, 52, 53, 58, 59, 76, 77, 78, 79, 80, 81, 82, 99, AG, AQ, AR, AS, GA, GC, GZ, LT, PD, Q6, QJ, RT, SC, XE, XP, XS, XU

## CCI Alerts (version 27.3)

0213T<sup>1</sup>, 0216T<sup>1</sup>, 10004<sup>1</sup>, 10008<sup>1</sup>, 10010<sup>1</sup>, 10011<sup>1</sup>, 10012<sup>1</sup>, 10021<sup>1</sup>, 10035<sup>1</sup>, 11102<sup>1</sup>, 11103<sup>1</sup>, 11104<sup>1</sup>, 11105<sup>1</sup>, 11106<sup>1</sup>, 11107<sup>1</sup>, 19281<sup>1</sup>, 19283<sup>1</sup>, 19285<sup>1</sup>, 19287<sup>1</sup>, 36000<sup>1</sup>, 36410<sup>1</sup>, 36591<sup>0</sup>, 36592<sup>0</sup>, 61650<sup>1</sup>, 62324<sup>1</sup>, 62325<sup>1</sup>, 62326<sup>1</sup>, 62327<sup>1</sup>, 64415<sup>1</sup>, 64416<sup>1</sup>, 64417<sup>1</sup>, 64450<sup>1</sup>, 64454<sup>1</sup>, 64486<sup>1</sup>, 64487<sup>1</sup>, 64488<sup>1</sup>, 64489<sup>1</sup>, 64490<sup>1</sup>, 64493<sup>1</sup>, 76000<sup>1</sup>, 76380<sup>1</sup>, 76942<sup>1</sup>, 76998<sup>1</sup>, 77001<sup>1</sup>, 77002<sup>1</sup>, 77012<sup>1</sup>, 77021<sup>1</sup>, 96360<sup>1</sup>, 96365<sup>1</sup>, 96372<sup>1</sup>, 96374<sup>1</sup>, 96375<sup>1</sup>, 96376<sup>1</sup>, 96377<sup>1</sup>, 96523<sup>0</sup>, J2001<sup>1</sup>

## ICD-10 CrossRef

C00.3, C01, C02.9, C04.1, C06.9, C07, C08.0, C12, C13.9, C15.9, C22.0-C22.4, C22.7, C22.8, C32.1, C32.8, C34.30-C34.32, C43.20-C43.22, C43.30-C43.39, C43.51-C43.59, C43.60-C43.62, C46.0, C50.011-C50.019, C50.111-C50.119, C50.211-C50.219, C50.411-C50.419, C50.811-C50.819, C50.911-C50.919, C51.9, C76.0, C76.1, C77.0, C77.3, C79.2, C79.81, C79.89, C79.9, C81.00-C81.09, C81.10-C81.19, C81.20-C81.29, C81.30-C81.39, C81.40-C81.49, C81.70-C81.79, C81.90-C81.99, C82.00-C82.09, C82.10-C82.19, C82.20-C82.29, C82.30-C82.39, C82.40-C82.49, C82.50-C82.59, C82.60-C82.69, C82.80-C82.89, C82.90-C82.99, C83.00-C83.09, C83.10-C83.19, C83.30-C83.39, C83.50-C83.59, C83.70-C83.79, C83.80-C83.89, C83.90-C83.99, C84.40-C84.49, C84.60-C84.69, C84.70-C84.79, C84.76, C84.77, C84.78, C84.79, C84.90-C84.99, C84.A0-C84.A9, C84.Z0-C84.Z9, C85.10-C85.19, C85.20-C85.29, C85.80-C85.89, C85.90-C85.99, C86.0-C86.5, C88.4, C88.8, C91.50-C91.52, C94.40-C94.42, C94.6, D03.20-D03.22, D03.30, D03.39, D03.51-D03.59, D03.60-D03.62, D05.00-D05.02, D05.10-D05.12, D05.80-D05.82, D05.90-D05.92, D11.0-D11.9, D17.0, D17.1, D17.20-D17.24, D17.30, D17.39, D17.72, D17.79, D17.9, D19.7, D21.0, D22.5, D22.70-D22.72, D23.5, D23.70-D23.72, D36.0, D36.7, D37.030-D37.039, D44.0-D44.2, D44.9, D47.1, D47.2, D47.9, D47.Z9, D48.1, D48.2, D48.60-D48.62, D48.7, D48.9, D49.0-D49.7, D49.9, D64.9, D75.9, D78.01, D78.02, D78.21, D78.22, D89.2, E01.0-E01.2, E03.4, E03.9, E04.0-E04.9, E06.0, E07.89, E07.9, E35, E36.01, E36.02, E65, E78.71, E89.820-E89.823, G97.31, G97.32, G97.51, G97.52, G97.63, G97.64, H66.10-H66.13, H69.80-H69.83, H93.8X1-H93.8X9, H94.80-H94.83, H95.21, H95.22, H95.41,

H95.42, H95.53, H95.54, I42.0-I42.5, I42.8, I42.9, I70.235, I70.245, I70.335, I70.345, I70.435, I70.445, I70.535, I70.545, I70.635, I70.645, I70.735, I70.745, I82.91, I88.1-I88.9, I89.8, I97.410-I97.418, I97.42, I97.610-I97.618, I97.622, I97.640-I97.648, J95.61, J95.62, J95.830, J95.831, J95.862, J95.863, J98.4, K11.20-K11.23, K11.3-K11.6, K11.9, K91.61, K91.62, K91.840, K91.841, K91.870-K91.873, L02.31, L02.415, L02.416, L02.419, L02.91, L03.115, L03.116, L03.119, L03.125, L03.126, L03.129, L03.317, L03.327, L03.90, L03.91, L57.0, L76.01, L76.02, L76.21, L76.22, L76.31-L76.34, L97.501-L97.504, L97.509, L97.511-L97.514, L97.519, L97.521-L97.524, L97.529, L98.3, L98.7, M71.30, M79.4, M96.810, M96.811, M96.830, M96.831, M96.840-M96.843, N60.01-N60.09, N60.11-N60.19, N61.0, N62, N63.0, N63.10-N63.15, N63.20-N63.25, N63.31, N63.32, N63.41, N63.42, N64.1, N99.61, N99.62, N99.820, N99.821, N99.840-N99.843, R18.8, R19.02, R20.8, R20.9, R22.0-R22.2, R22.30-R22.33, R22.40-R22.43, R22.9, R59.0-R59.9, R90.0, R92.1, R92.8, S14.111A-S14.111S, S14.112A-S14.112S, S14.113A-S14.113S, S14.114A-S14.114S, S14.115A-S14.115S, S14.116A-S14.116S, S14.117A-S14.117S, S14.118A-S14.118S, S14.119A-S14.119S, S14.151A-S14.151S, S14.152A-S14.152S, S14.153A-S14.153S, S14.154A-S14.154S, S14.155A-S14.155S, S14.156A-S14.156S, S14.157A-S14.157S, S14.158A-S14.158S, S14.159A-S14.159S, S24.111A-S24.111S, S24.112A-S24.112S, S24.113A-S24.113S, S24.114A-S24.114S, S24.119A-S24.119S, S24.151A-S24.151S, S24.152A-S24.152S, S24.153A-S24.153S, S24.154A-S24.154S, S24.159A-S24.159S, S34.111A-S34.111S, S34.112A-S34.112S, S34.113A-S34.113S, S34.114A-S34.114S, S34.115A-S34.115S, S34.119A-S34.119S, S34.121A-S34.121S, S34.122A-S34.122S, S34.123A-S34.123S, S34.124A-S34.124S, S34.125A-S34.125S, S34.129A-S34.129S, S90.869A, Y84.4, Z00.6, Z12.89, Z85.21, Z85.3, Z85.6, Z85.71, Z85.72

## +10006

Fine needle aspiration biopsy, including ultrasound guidance; each additional lesion (List separately in addition to code for primary procedure)

## Clinical Responsibility

With the patient properly prepared and anesthetized (typically with local anesthesia) and following FNA of an initial lesion, the provider inserts a needle, such as an 18- to 25-gauge needle with an attached syringe, under ultrasound imaging guidance into an additional suspicious lesion or area of tissue and withdraws cells, tissue, or fluid for laboratory analysis. The provider may make several passes to obtain an adequate specimen. The provider then sends the aspirate to the pathology lab for analysis.

## Coding Tips

For FNA of an initial lesion using other types of imaging guidance, see 10007 (fluoroscopy), 10009 (CT), and 10011 (MRI) and +10008, +10010 and +10012 for each additional lesion respectively.

For FNA without imaging guidance, report 10021 for the initial lesion and +10004 for each additional lesion.

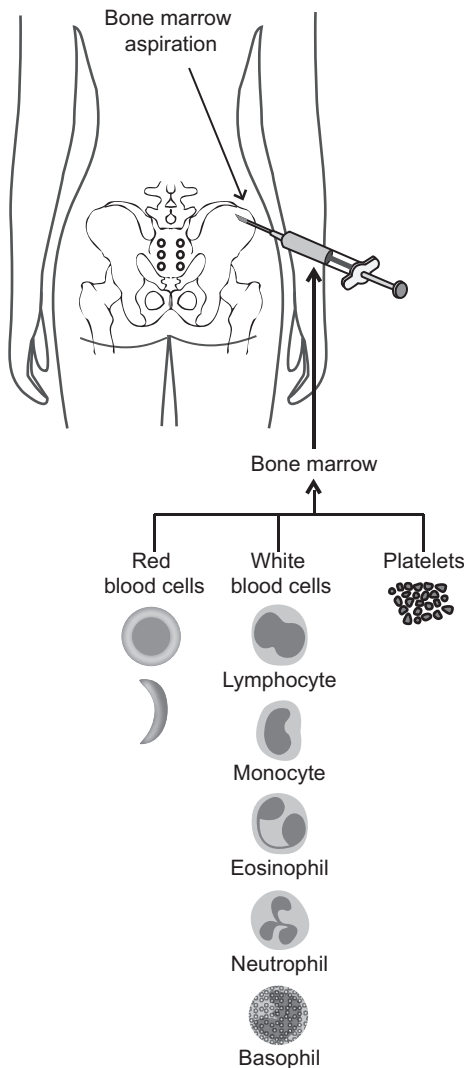
## 38230

Bone marrow harvesting for transplantation; allogeneic

### Clinical Responsibility

When the patient is appropriately prepped and anesthetized, the provider inserts a specially designed needle or trocar. He inserts the needle or trocar through the skin, most commonly in the sternum of the chest or the iliac crest in the pelvic area, and pushes the needle into the bone marrow. After confirmation of the needle position, he aspirates, scrapes, or excises out the bone marrow tissue and transfers it to a container for transplant. Finally, he removes the needle or trocar slowly and controls the bleeding with pressure at the insertion site. The procedure usually takes place in a minor procedure room or special suite for bone marrow procedures.

### Illustration



38230

### Fee Schedule

**Medicare Fees National** Conversion Factor: 34.8931, Facility: \$209.01, Non Facility: \$209.01, OPPS Facility: \$122.13, OPPS Non Facility: \$122.13

**RVU Facility** Work RVU: 3.50, PE RVU: 1.79, Malpractice RVU: 0.70, Total RVU: 5.99

**RVU Non-Facility** Work RVU: 3.50, PE RVU: 1.79, Malpractice RVU: 0.70, Total RVU: 5.99

**Indicators** Preoperative: 0.00, Intraoperative: 0.00, Postoperative: 0.00, Total RVU: 0, Global Period: 000, Radiology Diagnostic Test: 99, Code Status: A, PC/TC Indicator: 0, Endoscopic Base Code: None, MUE: 1

**Modifier Allowances** 22, 47, 51, 52, 53, 54, 55, 56, 58, 59, 63, 76, 77, 78, 79, 80, 81, 82, 99, AQ, AR, AS, CR, ET, GA, GC, GJ, GR, KX, LT, PD, Q5, Q6, QJ, RT, XE, XP, XS, XU

### CCI Alerts (version 27.3)

01120<sup>0</sup>, 0213T<sup>0</sup>, 0216T<sup>0</sup>, 0232T<sup>1</sup>, 0481T<sup>1</sup>, 0537T<sup>0</sup>, 0596T<sup>1</sup>, 0597T<sup>1</sup>, 12001<sup>1</sup>, 12002<sup>1</sup>, 12004<sup>1</sup>, 12005<sup>1</sup>, 12006<sup>1</sup>, 12007<sup>1</sup>, 12011<sup>1</sup>, 12013<sup>1</sup>, 12014<sup>1</sup>, 12015<sup>1</sup>, 12016<sup>1</sup>, 12017<sup>1</sup>, 12018<sup>1</sup>, 12020<sup>1</sup>, 12021<sup>1</sup>, 12031<sup>1</sup>, 12032<sup>1</sup>, 12034<sup>1</sup>, 12035<sup>1</sup>, 12036<sup>1</sup>, 12037<sup>1</sup>, 12041<sup>1</sup>, 12042<sup>1</sup>, 12044<sup>1</sup>, 12045<sup>1</sup>, 12046<sup>1</sup>, 12047<sup>1</sup>, 12051<sup>1</sup>, 12052<sup>1</sup>, 12053<sup>1</sup>, 12054<sup>1</sup>, 12055<sup>1</sup>, 12056<sup>1</sup>, 12057<sup>1</sup>, 13100<sup>1</sup>, 13101<sup>1</sup>, 13102<sup>1</sup>, 13120<sup>1</sup>, 13121<sup>1</sup>, 13122<sup>1</sup>, 13131<sup>1</sup>, 13132<sup>1</sup>, 13133<sup>1</sup>, 13151<sup>1</sup>, 13152<sup>1</sup>, 13153<sup>1</sup>, 20939<sup>1</sup>, 36000<sup>1</sup>, 36400<sup>1</sup>, 36405<sup>1</sup>, 36406<sup>1</sup>, 36410<sup>1</sup>, 36420<sup>1</sup>, 36425<sup>1</sup>, 36430<sup>1</sup>, 36440<sup>1</sup>, 36591<sup>0</sup>, 36592<sup>0</sup>, 36600<sup>1</sup>, 36640<sup>1</sup>, 38220<sup>0</sup>, 38222<sup>0</sup>, 43752<sup>1</sup>, 51701<sup>1</sup>, 51702<sup>1</sup>, 51703<sup>1</sup>, 62320<sup>0</sup>, 62321<sup>0</sup>, 62322<sup>0</sup>, 62323<sup>0</sup>, 62324<sup>0</sup>, 62325<sup>0</sup>, 62326<sup>0</sup>, 62327<sup>0</sup>, 64400<sup>0</sup>, 64405<sup>0</sup>, 64408<sup>0</sup>, 64415<sup>0</sup>, 64416<sup>0</sup>, 64417<sup>0</sup>, 64418<sup>0</sup>, 64420<sup>0</sup>, 64421<sup>0</sup>, 64425<sup>0</sup>, 64430<sup>0</sup>, 64435<sup>0</sup>, 64445<sup>0</sup>, 64446<sup>0</sup>, 64447<sup>0</sup>, 64448<sup>0</sup>, 64449<sup>0</sup>, 64450<sup>0</sup>, 64451<sup>0</sup>, 64454<sup>0</sup>, 64461<sup>0</sup>, 64462<sup>0</sup>, 64463<sup>0</sup>, 64479<sup>0</sup>, 64480<sup>0</sup>, 64483<sup>0</sup>, 64484<sup>0</sup>, 64486<sup>0</sup>, 64487<sup>0</sup>, 64488<sup>0</sup>, 64489<sup>0</sup>, 64490<sup>0</sup>, 64491<sup>0</sup>, 64492<sup>0</sup>, 64493<sup>0</sup>, 64494<sup>0</sup>, 64495<sup>0</sup>, 64505<sup>0</sup>, 64510<sup>0</sup>, 64517<sup>0</sup>, 64520<sup>0</sup>, 64530<sup>0</sup>, 69990<sup>0</sup>, 92012<sup>1</sup>, 92014<sup>1</sup>, 93000<sup>1</sup>, 93005<sup>1</sup>, 93010<sup>1</sup>, 93040<sup>1</sup>, 93041<sup>1</sup>, 93042<sup>1</sup>, 93318<sup>1</sup>, 93355<sup>1</sup>, 94002<sup>1</sup>, 94200<sup>1</sup>, 94680<sup>1</sup>, 94681<sup>1</sup>, 94690<sup>1</sup>, 95812<sup>1</sup>, 95813<sup>1</sup>, 95816<sup>1</sup>, 95819<sup>1</sup>, 95822<sup>1</sup>, 95829<sup>1</sup>, 95955<sup>1</sup>, 96360<sup>1</sup>, 96361<sup>1</sup>, 96365<sup>1</sup>, 96366<sup>1</sup>, 96367<sup>1</sup>, 96368<sup>1</sup>, 96372<sup>1</sup>, 96374<sup>1</sup>, 96375<sup>1</sup>, 96376<sup>1</sup>, 96377<sup>1</sup>, 96523<sup>0</sup>, 99155<sup>0</sup>, 99156<sup>0</sup>, 99157<sup>0</sup>, 99211<sup>1</sup>, 99212<sup>1</sup>, 99213<sup>1</sup>, 99214<sup>1</sup>, 99215<sup>1</sup>, 99217<sup>1</sup>, 99218<sup>1</sup>, 99219<sup>1</sup>, 99220<sup>1</sup>, 99221<sup>1</sup>, 99222<sup>1</sup>, 99223<sup>1</sup>, 99231<sup>1</sup>, 99232<sup>1</sup>, 99233<sup>1</sup>, 99234<sup>1</sup>, 99235<sup>1</sup>, 99236<sup>1</sup>, 99238<sup>1</sup>, 99239<sup>1</sup>, 99241<sup>1</sup>, 99242<sup>1</sup>, 99243<sup>1</sup>, 99244<sup>1</sup>, 99245<sup>1</sup>, 99251<sup>1</sup>, 99252<sup>1</sup>, 99253<sup>1</sup>, 99254<sup>1</sup>, 99255<sup>1</sup>, 99291<sup>1</sup>, 99292<sup>1</sup>, 99304<sup>1</sup>, 99305<sup>1</sup>, 99306<sup>1</sup>, 99307<sup>1</sup>, 99308<sup>1</sup>, 99309<sup>1</sup>, 99310<sup>1</sup>, 99315<sup>1</sup>, 99316<sup>1</sup>, 99334<sup>1</sup>, 99335<sup>1</sup>, 99336<sup>1</sup>, 99337<sup>1</sup>, 99347<sup>1</sup>, 99348<sup>1</sup>, 99349<sup>1</sup>, 99350<sup>1</sup>, 99374<sup>1</sup>, 99375<sup>1</sup>, 99377<sup>1</sup>, 99378<sup>1</sup>, 99446<sup>0</sup>, 99447<sup>0</sup>, 99448<sup>0</sup>, 99449<sup>0</sup>, 99451<sup>0</sup>, 99452<sup>0</sup>, 99495<sup>1</sup>, 99496<sup>1</sup>, G0463<sup>1</sup>, G0471<sup>1</sup>

### ICD-10 CrossRef

C82.50-C82.59, C83.30-C83.39, C83.70-C83.79, C84.90-C84.99, C84.A0-C84.A9, C84.Z0-C84.Z9, C85.10-C85.19, C85.20-C85.29, C85.80-C85.89, C85.90-C85.99, C86.0-C86.4, C90.01, C95.01, C95.11, C95.91, D57.813, D57.818, D84.81, D84.822, D84.89, M31.11, M31.19



# 38240

Hematopoietic progenitor cell (HPC); allogeneic transplantation per donor

## Clinical Responsibility

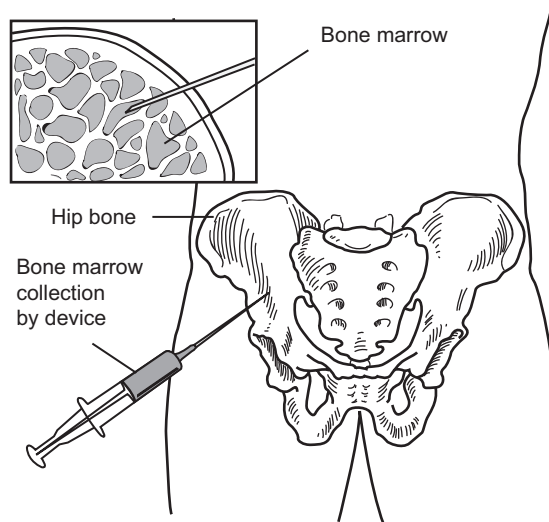
Hematopoietic known as blood forming progenitor cells (HPCs) is the name for the cell found in the bone marrow and also known as the parent cell from which other blood cells develop. The three main types of blood cells are red blood cell, white blood cell, and platelets. Progenitor cell transplant is a special treatment consisting of high doses of chemotherapy and then progenitor cell infusion. The goal is to provide complete suppression of the immune system so that the recipient's body does not reject these foreign cells from another person's body.

After the provider collects hematopoietic progenitor cells from a donor's bone marrow, he injects the cells into the recipient through an intravenous drip, under completely sterile conditions.

## Coding Tips

Report this code if HPC transplantation is done for a patient that is genetically different but from the same species.

## Illustration



38240

## Fee Schedule

**Medicare Fees National** Conversion Factor: 34.8931, Facility: \$242.51, Non Facility: \$242.51, OPPS Facility: \$139.57, OPPS Non Facility: \$139.57

**RVU Facility** Work RVU: 4.00, PE RVU: 2.69, Malpractice RVU: 0.26, Total RVU: 6.95

**RVU Non-Facility** Work RVU: 4.00, PE RVU: 2.69, Malpractice RVU: 0.26, Total RVU: 6.95

**Indicators** Preoperative: 0.00, Intraoperative: 0.00, Postoperative: 0.00, Total RVU: 0, Global Period: XXX, Radiology Diagnostic Test:

99, Code Status: R, PC/TC Indicator: 0, Endoscopic Base Code: None, MUE: 1

**Modifier Allowances** 22, 51, 52, 53, 59, 63, 76, 77, 79, 80, 81, 82, 99, AQ, AR, AS, CR, ET, GA, GC, GJ, GR, GY, GZ, KX, PD, Q5, Q6, QJ, XE, XP, XS, XU

## CCI Alerts (version 27.3)

0537T<sup>0</sup>, 36591<sup>0</sup>, 36592<sup>0</sup>, 38242<sup>0</sup>, 38243<sup>0</sup>, 69990<sup>0</sup>, 86950<sup>0</sup>, 96523<sup>0</sup>, 99211<sup>1</sup>, 99212<sup>1</sup>, 99213<sup>1</sup>, 99214<sup>1</sup>, 99215<sup>1</sup>, 99217<sup>1</sup>, 99218<sup>1</sup>, 99219<sup>1</sup>, 99220<sup>1</sup>, 99221<sup>1</sup>, 99222<sup>1</sup>, 99223<sup>1</sup>, 99224<sup>1</sup>, 99225<sup>1</sup>, 99226<sup>1</sup>, 99231<sup>1</sup>, 99232<sup>1</sup>, 99233<sup>1</sup>, 99234<sup>1</sup>, 99235<sup>1</sup>, 99236<sup>1</sup>, 99238<sup>1</sup>, 99239<sup>1</sup>, 99471<sup>1</sup>, 99472<sup>1</sup>, 99475<sup>1</sup>, 99476<sup>1</sup>, G0463<sup>1</sup>

## ICD-10 CrossRef

C62.00-C62.02, C62.10-C62.12, C62.90-C62.92, C81.00-C81.09, C81.10-C81.19, C81.20-C81.29, C81.30-C81.39, C81.40-C81.49, C81.70-C81.79, C81.90-C81.99, C82.00-C82.09, C82.10-C82.19, C82.20-C82.29, C82.30-C82.39, C82.40-C82.49, C82.50-C82.59, C82.60-C82.69, C82.80-C82.89, C82.90-C82.99, C83.00-C83.09, C83.30-C83.39, C83.50-C83.59, C83.70-C83.79, C83.80-C83.89, C83.90-C83.99, C84.90-C84.99, C84.A0-C84.A9, C84.Z0-C84.Z9, C85.10-C85.19, C85.20-C85.29, C85.80-C85.89, C85.90-C85.99, C86.0-C86.6, C90.00, C91.00-C91.02, C91.10-C91.12, C91.30-C91.32, C91.50-C91.52, C91.60-C91.62, C91.90-C91.92, C91.A0-C91.A2, C91.Z0-C91.Z2, C92.00-C92.02, C92.10-C92.12, C92.20-C92.22, C92.30-C92.32, C92.40-C92.42, C92.50-C92.52, C92.60-C92.62, C92.90-C92.92, C92.A0-C92.A2, C92.Z0-C92.Z2, C93.00-C93.02, C93.10-C93.12, C93.30-C93.32, C93.90-C93.92, C93.Z0-C93.Z2, C94.00-C94.02, C94.20-C94.22, C94.30-C94.32, C94.80-C94.82, C95.00-C95.02, C95.10-C95.12, C95.90-C95.92, C96.4-C96.9, C96.Z, D45, D46.0, D46.1, D46.20-D46.22, D46.4, D46.A, D46.B, D47.1, D47.Z9, D56.8, D60.0-D60.9, D61.01, D61.09, D61.1-D61.3, D61.82, D61.89, D61.9, D81.0-D81.2, D81.6, D81.7, D81.89, D81.9, D82.0, E85.1-E85.4, E85.81-E85.89, E85.9, M31.11, M31.19

**77522**

Proton treatment delivery; simple, with compensation

## Clinical Responsibility

Proton therapy involves irradiating the cancer cells with a proton beam. This code represents treatment delivery, which is the technical component of a procedure in which the provider performs simple treatment using a single non-tangential port with compensators. A proton is a positively charged particle that is a part of an atom. These protons interfere with the DNA of tumor cells and minimize their ability to multiply. Proton therapy is more advantageous than standard X-ray radiation because protons enter the body with a low dose of radiation, which increases when the beam slows down within the target tumor, and then the proton stops. A proton beam has a low entrance dose, a high dose designed to cover the entire tumor, and no exit dose beyond the tumor. That is why provider use proton therapy to treat deep-seated tumors that are close to sensitive structures like the spinal cord and brain.

## Coding Tips

Use 77520 for delivery of simple proton therapy without compensation.

## Fee Schedule

**Medicare Fees National** Conversion Factor: 34.8931, Facility: \$0.00, Non Facility: \$0.00, OPPS Facility: \$0.00, OPPS Non Facility: \$0.00  
**RVU Facility** Work RVU: 0.00, PE RVU: 0.00, Malpractice RVU: 0.00, Total RVU: 0.00

**RVU Non-Facility** Work RVU: 0.00, PE RVU: 0.00, Malpractice RVU: 0.00, Total RVU: 0.00

**Indicators** Preoperative: 0.00, Intraoperative: 0.00, Postoperative: 0.00, Total RVU: 0, Global Period: XXX, Radiology Diagnostic Test: 99, Code Status: C, PC/TC Indicator: 3, Endoscopic Base Code: None, MUE: 1

**Modifier Allowances** 22, 52, 53, 59, 76, 77, 79, 80, 81, 82, 99, AS, CR, ET, GA, GC, GJ, GR, GY, GZ, KX, PD, Q5, Q6, QJ, XE, XP, XS, XU

## CCI Alerts (version 27.3)

0591T<sup>1</sup>, 0592T<sup>1</sup>, 0593T<sup>1</sup>, 0596T<sup>0</sup>, 0597T<sup>0</sup>, 11920<sup>0</sup>, 11921<sup>0</sup>, 16000<sup>0</sup>, 16020<sup>0</sup>, 16025<sup>0</sup>, 16030<sup>0</sup>, 36000<sup>1</sup>, 36410<sup>1</sup>, 36425<sup>0</sup>, 36591<sup>0</sup>, 36592<sup>0</sup>, 51701<sup>0</sup>, 51702<sup>0</sup>, 51703<sup>0</sup>, 77371<sup>0</sup>, 77372<sup>0</sup>, 77373<sup>0</sup>, 77401<sup>0</sup>, 77402<sup>0</sup>, 77407<sup>0</sup>, 77412<sup>0</sup>, 77520<sup>1</sup>, 90832<sup>0</sup>, 90833<sup>0</sup>, 90834<sup>0</sup>, 90836<sup>0</sup>, 90837<sup>0</sup>, 90838<sup>0</sup>, 90839<sup>0</sup>, 90840<sup>0</sup>, 90846<sup>0</sup>, 90847<sup>0</sup>, 90863<sup>0</sup>, 96160<sup>1</sup>, 96161<sup>1</sup>, 96360<sup>0</sup>, 96361<sup>0</sup>, 96365<sup>0</sup>, 96366<sup>0</sup>, 96367<sup>0</sup>, 96368<sup>0</sup>, 96523<sup>0</sup>, 97802<sup>0</sup>, 97803<sup>0</sup>, 97804<sup>0</sup>, 99151<sup>0</sup>, 99152<sup>0</sup>, 99153<sup>0</sup>, 99202<sup>1</sup>, 99203<sup>1</sup>, 99204<sup>1</sup>, 99205<sup>1</sup>, 99211<sup>1</sup>, 99212<sup>1</sup>, 99213<sup>1</sup>, 99214<sup>1</sup>, 99215<sup>1</sup>, 99217<sup>0</sup>, 99218<sup>0</sup>, 99219<sup>0</sup>, 99220<sup>0</sup>, 99221<sup>1</sup>, 99222<sup>1</sup>, 99223<sup>1</sup>, 99224<sup>0</sup>, 99225<sup>0</sup>, 99226<sup>0</sup>, 99231<sup>1</sup>, 99232<sup>1</sup>, 99233<sup>1</sup>, 99234<sup>1</sup>, 99235<sup>1</sup>, 99236<sup>1</sup>, 99238<sup>0</sup>, 99239<sup>0</sup>, 99241<sup>1</sup>, 99242<sup>1</sup>, 99243<sup>1</sup>, 99244<sup>1</sup>, 99245<sup>1</sup>, 99251<sup>1</sup>, 99252<sup>1</sup>, 99253<sup>1</sup>, 99254<sup>1</sup>, 99255<sup>1</sup>, 99281<sup>0</sup>, 99282<sup>0</sup>, 99283<sup>0</sup>, 99284<sup>0</sup>, 99285<sup>0</sup>, 99288<sup>1</sup>, 99291<sup>0</sup>, 99292<sup>0</sup>, 99304<sup>0</sup>, 99305<sup>0</sup>, 99306<sup>0</sup>, 99307<sup>0</sup>, 99308<sup>0</sup>, 99309<sup>0</sup>, 99310<sup>0</sup>, 99315<sup>0</sup>, 99316<sup>0</sup>, 99318<sup>0</sup>, 99324<sup>0</sup>, 99325<sup>0</sup>, 99326<sup>0</sup>, 99327<sup>0</sup>, 99328<sup>0</sup>, 99334<sup>0</sup>, 99335<sup>0</sup>, 99336<sup>0</sup>, 99337<sup>0</sup>, 99339<sup>1</sup>, 99340<sup>1</sup>, 99341<sup>0</sup>, 99342<sup>0</sup>, 99343<sup>0</sup>, 99344<sup>0</sup>, 99345<sup>0</sup>, 99347<sup>0</sup>, 99348<sup>0</sup>, 99349<sup>0</sup>, 99350<sup>0</sup>, 99354<sup>0</sup>, 99355<sup>0</sup>, 99356<sup>0</sup>, 99357<sup>0</sup>, 99358<sup>0</sup>, 99359<sup>0</sup>, 99360<sup>0</sup>, 99366<sup>1</sup>,

99367<sup>1</sup>, 99368<sup>1</sup>, 99374<sup>1</sup>, 99375<sup>1</sup>, 99377<sup>1</sup>, 99378<sup>1</sup>, 99379<sup>1</sup>, 99380<sup>1</sup>, 99381<sup>1</sup>, 99382<sup>1</sup>, 99383<sup>1</sup>, 99384<sup>1</sup>, 99385<sup>1</sup>, 99386<sup>1</sup>, 99387<sup>1</sup>, 99391<sup>1</sup>, 99392<sup>1</sup>, 99393<sup>1</sup>, 99394<sup>1</sup>, 99395<sup>1</sup>, 99396<sup>1</sup>, 99397<sup>1</sup>, 99401<sup>1</sup>, 99402<sup>1</sup>, 99403<sup>1</sup>, 99404<sup>1</sup>, 99406<sup>0</sup>, 99407<sup>0</sup>, 99408<sup>1</sup>, 99409<sup>1</sup>, 99411<sup>1</sup>, 99412<sup>1</sup>, 99415<sup>0</sup>, 99416<sup>0</sup>, 99421<sup>1</sup>, 99422<sup>1</sup>, 99423<sup>1</sup>, 99429<sup>1</sup>, 99441<sup>1</sup>, 99442<sup>1</sup>, 99443<sup>1</sup>, 99446<sup>0</sup>, 99447<sup>0</sup>, 99448<sup>0</sup>, 99449<sup>0</sup>, 99450<sup>1</sup>, 99451<sup>0</sup>, 99452<sup>0</sup>, 99455<sup>0</sup>, 99456<sup>0</sup>, 99460<sup>0</sup>, 99461<sup>0</sup>, 99462<sup>0</sup>, 99463<sup>0</sup>, 99464<sup>0</sup>, 99465<sup>0</sup>, 99466<sup>0</sup>, 99467<sup>0</sup>, 99468<sup>0</sup>, 99469<sup>0</sup>, 99471<sup>0</sup>, 99472<sup>0</sup>, 99475<sup>0</sup>, 99476<sup>0</sup>, 99477<sup>0</sup>, 99478<sup>0</sup>, 99479<sup>0</sup>, 99480<sup>0</sup>, 99483<sup>1</sup>, 99484<sup>1</sup>, 99485<sup>0</sup>, 99486<sup>0</sup>, 99487<sup>1</sup>, 99489<sup>1</sup>, 99490<sup>1</sup>, 99491<sup>1</sup>, 99492<sup>1</sup>, 99493<sup>1</sup>, 99494<sup>1</sup>, 99495<sup>0</sup>, 99496<sup>0</sup>, 99497<sup>1</sup>, 99498<sup>1</sup>, G0339<sup>0</sup>, G0340<sup>0</sup>, G0442<sup>1</sup>, G0443<sup>1</sup>, G0444<sup>1</sup>, G0445<sup>1</sup>, G0459<sup>0</sup>, G0463<sup>1</sup>, G0471<sup>0</sup>, G0500<sup>0</sup>, G0506<sup>1</sup>, G0511<sup>1</sup>, G0512<sup>1</sup>, G6003<sup>0</sup>, G6004<sup>0</sup>, G6005<sup>0</sup>, G6006<sup>0</sup>, G6007<sup>0</sup>, G6008<sup>0</sup>, G6009<sup>0</sup>, G6010<sup>0</sup>, G6011<sup>0</sup>, G6012<sup>0</sup>, G6013<sup>0</sup>, G6014<sup>0</sup>

## ICD-10 CrossRef

C00.0-C00.3, C00.5, C00.6, C00.8, C00.9, C01, C02.0-C02.2, C02.4, C02.8, C02.9, C03.0-C03.9, C04.0, C04.1, C04.8, C05.0-C05.2, C06.0-C06.2, C06.80, C06.89, C06.9, C07, C08.0-C08.9, C09.0-C09.9, C10.0-C10.9, C11.0-C11.3, C11.8, C11.9, C12, C13.0-C13.9, C14.2, C14.8, C15.3-C15.9, C16.0-C16.6, C16.8, C16.9, C17.1-C17.3, C17.8, C17.9, C18.1-C18.9, C18.6, C18.7, C18.8, C18.9, C19, C20, C21.0, C21.1, C22.0-C22.9, C23, C24.0, C24.1, C24.9, C25.0-C25.4, C25.9, C26.0-C26.9, C30.0, C30.1, C31.0-C31.9, C32.0-C32.3, C32.8, C32.9, C33, C34.00-C34.02, C34.10-C34.12, C34.2, C34.30-C34.32, C34.80-C34.82, C34.90-C34.92, C37, C38.0-C38.8, C39.0, C39.9, C40.00-C40.02, C40.10-C40.12, C40.20-C40.22, C40.30-C40.32, C40.80-C40.82, C40.90-C40.92, C41.0-C41.3, C41.9, C43.0-C43.4, C43.10, C43.20-C43.22, C43.30-C43.39, C43.51-C43.59, C43.70-C43.72, C43.8, C43.9, C45.1, C45.2, C45.7, C45.9, C46.0, C46.1, C46.3, C46.4, C46.50-C46.52, C46.7, C46.9, C47.0-C47.5, C47.10-C47.12, C47.20-C47.22, C47.8, C47.9, C48.0-C48.8, C49.0-C49.5, C49.10-C49.12, C49.20-C49.22, C49.8, C49.9, C50.021-C50.029, C50.111-C50.119, C50.121-C50.129, C50.211-C50.219, C50.221-C50.229, C50.311-C50.319, C50.321-C50.329, C50.411-C50.419, C50.421-C50.429, C50.511-C50.519, C50.521-C50.529, C50.621-C50.629, C50.811-C50.819, C50.821-C50.829, C50.911-C50.919, C50.921-C50.929, C51.0, C51.1, C51.8, C51.9, C52-C55, C53.0, C53.1, C53.8, C54.0-C54.9, C56.1, C56.2, C56.9, C57.00-C57.02, C57.20-C57.22, C57.3, C57.4, C57.7, C57.8, C57.9, C58, C60.0-C60.2, C60.8, C60.9, C61, C62.00-C62.02, C62.10-C62.12, C62.90-C62.92, C63.00-C63.02, C63.10-C63.12, C63.2-C63.8, C65.1-C65.9, C66.1-C66.9, C67.0-C67.9, C68.0-C68.9, C69.10-C69.12, C69.20-C69.22, C69.30-C69.32, C69.40-C69.42, C69.50-C69.52, C69.60-C69.62, C69.80-C69.82, C69.90-C69.92, C70.0-C70.9, C71.0-C71.4, C71.6, C71.7, C71.8, C71.9, C72.0, C72.1, C72.20-C72.22, C72.30-C72.32, C72.40-C72.42, C72.50, C72.59, C72.9, C73, C74.00-C74.02, C74.10-C74.12, C74.90-C74.92, C75.0-C75.9, C76.1-C76.3, C76.40-C76.42, C76.50-C76.52, C76.8, C77.0-C77.5, C77.8, C77.9, C78.1, C78.2, C78.30, C78.39, C78.4, C78.5, C78.6, C78.7, C78.80, C78.89, C79.10-C79.19, C79.2, C79.31, C79.32, C79.40, C79.49, C79.51, C79.52, C79.70-C79.72, C79.81-C79.89, C79.9, C7A.00, C7A.010-C7A.019, C7A.020-C7A.029, C7A.090-C7A.098, C7A.1, C7A.8, C80.0, C80.1, C81.00-C81.05, C81.07, C81.08, C81.09, C81.10-C81.14, C81.16, C81.17, C81.18, C81.19, C81.20, C81.21, C81.23, C81.24, C81.25, C81.26, C81.27, C81.28, C81.29, C81.30, C81.31, C81.33, C81.34, C81.35, C81.36, C81.37, C81.38, C81.39, C81.40-C81.45, C81.47, C81.48, C81.49, C81.70-C81.79, C81.90-C81.92, C81.94, C81.95, C81.96, C81.97, C81.98, C81.99, C82.00-C82.04, C82.06, C82.07,

Modifier: 0 = not allowed, 1 = allowed

CPT® is a registered trademark of the American Medical Association.  
CPT © 2022 American Medical Association. All rights reserved.

139

C82.08, C82.09, C82.10-C82.14, C82.16, C82.17, C82.18, C82.19, C82.20-C82.24, C82.26, C82.27, C82.28, C82.29, C82.30-C82.34, C82.36, C82.37, C82.38, C82.39, C82.40-C82.44, C82.46, C82.47, C82.48, C82.49, C82.51-C82.57, C82.60-C82.64, C82.66, C82.67, C82.68, C82.69, C82.80-C82.84, C82.86, C82.87, C82.88, C82.89, C82.90-C82.94, C82.96, C82.97, C82.98, C82.99, C83.00-C83.04, C83.06, C83.07, C83.08, C83.09, C83.10-C83.15, C83.17, C83.18, C83.19, C83.30-C83.39, C83.50-C83.54, C83.56, C83.57, C83.58, C83.59, C83.70-C83.73, C83.75, C83.76, C83.77, C83.78, C83.79, C83.80-C83.89, C83.90-C83.94, C83.96, C83.97, C83.98, C83.99, C84.00-C84.07, C84.09, C84.10-C84.17, C84.19, C84.40-C84.49, C84.61-C84.68, C84.71-C84.78, C84.91-C84.97, C84.A1-C84.A7, C84.Z1-C84.Z7, C85.11-C85.17, C85.21-C85.28, C85.81-C85.87, C85.91-C85.97, C86.0-C86.3, C86.5, C86.6, C88.2-C88.4, C88.8, C88.9, C90.00, C90.01, C90.10, C90.11, C90.20, C90.21, C90.30, C90.31, C91.00, C91.10, C91.11, C91.30, C91.31, C91.40-C91.42, C91.50, C91.51, C91.60, C91.61, C91.90, C91.91, C91.A0, C91.A1, C91.Z0, C91.Z1, C92.00, C92.10, C92.11, C92.20, C92.21, C92.30, C92.31, C92.40, C92.50, C92.60, C92.90, C92.91, C92.A0, C92.Z0, C92.Z1, C93.00, C93.01, C93.10, C93.30, C93.31, C93.90, C93.91, C93.Z0, C93.Z1, C94.00, C94.01, C94.30, C94.31, C94.80, C94.81, C95.00, C95.01, C95.10, C95.11, C95.90, C95.91, C96.0-C96.4, C96.20-C96.29, C96.9, C96.A, C96.Z, D00.00-D00.08, D00.1, D00.2, D01.0-D01.3, D01.40, D01.49, D01.5, D01.7, D01.9, D02.0, D02.1, D02.20-D02.22, D02.3, D02.4, D03.0-D03.4, D03.10, D03.20-D03.22, D03.30, D03.39, D03.51-D03.59, D03.70-D03.72, D03.8, D03.9, D04.0-D04.5, D04.20-D04.22, D04.30, D04.39, D04.60-D04.62, D04.70-D04.72, D04.8, D04.9, D05.00-D05.02, D05.10-D05.12, D05.80-D05.82, D05.90-D05.92, D06.0-D06.9, D07.0-D07.2, D07.30, D07.39, D07.4, D07.5, D07.60-D07.69, D09.0-D09.3, D09.10, D09.19, D09.20-D09.22, D09.8, D09.9, D37.01, D37.02, D37.030-D37.039, D37.04, D37.05, D37.09, D37.1-D37.6, D37.8, D37.9, D38.0-D38.6, D39.0-D39.2, D39.10-D39.12, D39.8, D39.9, D3A.00, D3A.010-D3A.012, D3A.020, D3A.021, D3A.023, D3A.024, D3A.025, D3A.026, D3A.029, D3A.090-D3A.098, D3A.8, D40.0-D40.9, D40.10-D40.12, D41.00-D41.02, D41.10-D41.12, D41.20-D41.22, D41.3, D41.4, D41.8, D41.9, D42.0-D42.9, D43.0-D43.9, D44.0-D44.7, D44.10-D44.12, D44.9, D45, D47.01-D47.09, D47.Z9, D48.0-D48.5, D48.7, D48.9, D49.0-D49.4, D49.6, D49.7, D49.9, E34.0, M81.0, Q28.2, Q28.3, Q85.00-Q85.02, Z51.0, Z74.09, Z78.9

## 77523

Proton treatment delivery; intermediate

### Clinical Responsibility

Proton therapy involves irradiating the cancer cells with a proton beam. This code represents treatment delivery, which is the technical component of a procedure in which the provider performs intermediate level treatment, irradiating one or two treatment areas using two or more ports or one or more tangential ports, along with custom blocks and compensators. A proton is a positively charged particle that is a part of an atom. These protons interfere with the DNA of tumor cells and minimize their ability to multiply. Proton therapy is more advantageous than standard X-ray radiation because protons enter the body with a low dose of radiation, which increases when the beam slows down within the target tumor, and then the proton stops. A proton beam has a low entrance dose, a high dose designed to cover the entire

tumor, and no exit dose beyond the tumor. That is why providers use proton therapy to treat deep-seated tumors that are close to sensitive structures like the spinal cord and brain.

### Fee Schedule

**Medicare Fees National** Conversion Factor: 34.8931, Facility: \$0.00, Non Facility: \$0.00, OPPS Facility: \$0.00, OPPS Non Facility: \$0.00

**RVU Facility** Work RVU: 0.00, PE RVU: 0.00, Malpractice RVU: 0.00, Total RVU: 0.00

**RVU Non-Facility** Work RVU: 0.00, PE RVU: 0.00, Malpractice RVU: 0.00, Total RVU: 0.00

**Indicators** Preoperative: 0.00, Intraoperative: 0.00, Postoperative: 0.00, Total RVU: 0, Global Period: XXX, Radiology Diagnostic Test: 99, Code Status: C, PC/TC Indicator: 3, Endoscopic Base Code: None, MUE: 1

**Modifier Allowances** 22, 52, 53, 59, 76, 77, 79, 80, 81, 82, 99, AS, CR, ET, GA, GC, GJ, GR, GY, GZ, KX, PD, Q5, Q6, QJ, XE, XP, XS, XU

### CCI Alerts (version 27.3)

0591T<sup>1</sup>, 0592T<sup>1</sup>, 0593T<sup>1</sup>, 0596T<sup>0</sup>, 0597T<sup>0</sup>, 11920<sup>0</sup>, 11921<sup>0</sup>, 16000<sup>0</sup>, 16020<sup>0</sup>, 16025<sup>0</sup>, 16030<sup>0</sup>, 36000<sup>1</sup>, 36410<sup>1</sup>, 36425<sup>0</sup>, 36591<sup>0</sup>, 36592<sup>0</sup>, 51701<sup>0</sup>, 51702<sup>0</sup>, 51703<sup>0</sup>, 77371<sup>0</sup>, 77372<sup>0</sup>, 77373<sup>0</sup>, 77401<sup>0</sup>, 77402<sup>0</sup>, 77407<sup>0</sup>, 77412<sup>0</sup>, 77520<sup>1</sup>, 77522<sup>1</sup>, 90832<sup>0</sup>, 90833<sup>0</sup>, 90834<sup>0</sup>, 90836<sup>0</sup>, 90837<sup>0</sup>, 90838<sup>0</sup>, 90839<sup>0</sup>, 90840<sup>0</sup>, 90846<sup>0</sup>, 90847<sup>0</sup>, 90863<sup>0</sup>, 96160<sup>1</sup>, 96161<sup>1</sup>, 96360<sup>0</sup>, 96361<sup>0</sup>, 96365<sup>0</sup>, 96366<sup>0</sup>, 96367<sup>0</sup>, 96368<sup>0</sup>, 96523<sup>0</sup>, 97802<sup>0</sup>, 97803<sup>0</sup>, 97804<sup>0</sup>, 99151<sup>0</sup>, 99152<sup>0</sup>, 99153<sup>0</sup>, 99202<sup>1</sup>, 99203<sup>1</sup>, 99204<sup>1</sup>, 99205<sup>1</sup>, 99211<sup>1</sup>, 99212<sup>1</sup>, 99213<sup>1</sup>, 99214<sup>1</sup>, 99215<sup>1</sup>, 99217<sup>0</sup>, 99218<sup>0</sup>, 99219<sup>0</sup>, 99220<sup>0</sup>, 99221<sup>1</sup>, 99222<sup>1</sup>, 99223<sup>1</sup>, 99224<sup>0</sup>, 99225<sup>0</sup>, 99226<sup>0</sup>, 99231<sup>1</sup>, 99232<sup>1</sup>, 99233<sup>1</sup>, 99234<sup>1</sup>, 99235<sup>1</sup>, 99236<sup>1</sup>, 99238<sup>0</sup>, 99239<sup>0</sup>, 99241<sup>1</sup>, 99242<sup>1</sup>, 99243<sup>1</sup>, 99244<sup>1</sup>, 99245<sup>1</sup>, 99251<sup>1</sup>, 99252<sup>1</sup>, 99253<sup>1</sup>, 99254<sup>1</sup>, 99255<sup>1</sup>, 99281<sup>0</sup>, 99282<sup>0</sup>, 99283<sup>0</sup>, 99284<sup>0</sup>, 99285<sup>0</sup>, 99288<sup>1</sup>, 99291<sup>0</sup>, 99292<sup>0</sup>, 99304<sup>0</sup>, 99305<sup>0</sup>, 99306<sup>0</sup>, 99307<sup>0</sup>, 99308<sup>0</sup>, 99309<sup>0</sup>, 99310<sup>0</sup>, 99315<sup>0</sup>, 99316<sup>0</sup>, 99318<sup>0</sup>, 99324<sup>0</sup>, 99325<sup>0</sup>, 99326<sup>0</sup>, 99327<sup>0</sup>, 99328<sup>0</sup>, 99334<sup>0</sup>, 99335<sup>0</sup>, 99336<sup>0</sup>, 99337<sup>0</sup>, 99339<sup>1</sup>, 99340<sup>1</sup>, 99341<sup>0</sup>, 99342<sup>0</sup>, 99343<sup>0</sup>, 99344<sup>0</sup>, 99345<sup>0</sup>, 99347<sup>0</sup>, 99348<sup>0</sup>, 99349<sup>0</sup>, 99350<sup>0</sup>, 99354<sup>0</sup>, 99355<sup>0</sup>, 99356<sup>0</sup>, 99357<sup>0</sup>, 99358<sup>0</sup>, 99359<sup>0</sup>, 99360<sup>0</sup>, 99366<sup>1</sup>, 99367<sup>1</sup>, 99368<sup>1</sup>, 99374<sup>1</sup>, 99375<sup>1</sup>, 99377<sup>1</sup>, 99378<sup>1</sup>, 99379<sup>1</sup>, 99380<sup>1</sup>, 99381<sup>1</sup>, 99382<sup>1</sup>, 99383<sup>1</sup>, 99384<sup>1</sup>, 99385<sup>1</sup>, 99386<sup>1</sup>, 99387<sup>1</sup>, 99391<sup>1</sup>, 99392<sup>1</sup>, 99393<sup>1</sup>, 99394<sup>1</sup>, 99395<sup>1</sup>, 99396<sup>1</sup>, 99397<sup>1</sup>, 99401<sup>1</sup>, 99402<sup>1</sup>, 99403<sup>1</sup>, 99404<sup>1</sup>, 99406<sup>0</sup>, 99407<sup>0</sup>, 99408<sup>1</sup>, 99409<sup>1</sup>, 99411<sup>1</sup>, 99412<sup>1</sup>, 99415<sup>0</sup>, 99416<sup>0</sup>, 99421<sup>1</sup>, 99422<sup>1</sup>, 99423<sup>1</sup>, 99429<sup>1</sup>, 99441<sup>1</sup>, 99442<sup>1</sup>, 99443<sup>1</sup>, 99446<sup>0</sup>, 99447<sup>0</sup>, 99448<sup>0</sup>, 99449<sup>0</sup>, 99450<sup>1</sup>, 99451<sup>0</sup>, 99452<sup>0</sup>, 99455<sup>0</sup>, 99456<sup>0</sup>, 99460<sup>0</sup>, 99461<sup>0</sup>, 99462<sup>0</sup>, 99463<sup>0</sup>, 99464<sup>0</sup>, 99465<sup>0</sup>, 99466<sup>0</sup>, 99467<sup>0</sup>, 99468<sup>0</sup>, 99469<sup>0</sup>, 99471<sup>0</sup>, 99472<sup>0</sup>, 99475<sup>0</sup>, 99476<sup>0</sup>, 99477<sup>0</sup>, 99478<sup>0</sup>, 99479<sup>0</sup>, 99480<sup>0</sup>, 99483<sup>1</sup>, 99484<sup>1</sup>, 99485<sup>0</sup>, 99486<sup>0</sup>, 99487<sup>1</sup>, 99489<sup>1</sup>, 99490<sup>1</sup>, 99491<sup>1</sup>, 99492<sup>1</sup>, 99493<sup>1</sup>, 99494<sup>1</sup>, 99495<sup>0</sup>, 99496<sup>0</sup>, 99497<sup>1</sup>, 99498<sup>1</sup>, G0339<sup>0</sup>, G0340<sup>0</sup>, G0442<sup>1</sup>, G0443<sup>1</sup>, G0444<sup>1</sup>, G0445<sup>1</sup>, G0459<sup>0</sup>, G0463<sup>1</sup>, G0471<sup>0</sup>, G0500<sup>0</sup>, G0506<sup>1</sup>, G0511<sup>1</sup>, G0512<sup>1</sup>, G6003<sup>0</sup>, G6004<sup>0</sup>, G6005<sup>0</sup>, G6006<sup>0</sup>, G6007<sup>0</sup>, G6008<sup>0</sup>, G6009<sup>0</sup>, G6010<sup>0</sup>, G6011<sup>0</sup>, G6012<sup>0</sup>, G6013<sup>0</sup>, G6014<sup>0</sup>

### ICD-10 CrossRef

C00.0-C00.3, C00.5, C00.6, C00.8, C00.9, C01, C02.0-C02.2, C02.4, C02.8, C02.9, C03.0-C03.9, C04.0, C04.1, C04.8, C05.0-C05.2, C06.0-C06.2, C06.80, C06.89, C06.9, C07, C08.0-C08.9, C09.0-C09.9, C10.0-C10.9, C11.0-C11.3, C11.8, C11.9, C12, C13.0-C13.9, C14.2, C14.8, C15.3-C15.9, C16.0-C16.6, C16.8, C16.9, C17.1-C17.3, C17.8, C17.9, C18.1-C18.9, C18.6, C18.7, C18.8, C18.9, C19, C20, C21.0, C21.1, C22.0-C22.9, C23, C24.0, C24.1, C24.9, C25.0-C25.4,



# ICD-10 CrossRef Details

<b>A00.0</b>	Cholera due to <i>Vibrio cholerae</i> 01, biovar cholerae	<b>A07.8</b>	Other specified protozoal intestinal diseases
<b>A00.1</b>	Cholera due to <i>Vibrio cholerae</i> 01, biovar eltor	<b>A07.9</b>	Protozoal intestinal disease, unspecified
<b>A00.9</b>	Cholera, unspecified	<b>A08.0</b>	Rotaviral enteritis
<b>A01.00</b>	Typhoid fever, unspecified	<b>A08.11</b>	Acute gastroenteropathy due to Norwalk agent
<b>A01.01</b>	Typhoid meningitis	<b>A08.19</b>	Acute gastroenteropathy due to other small round viruses
<b>A01.02</b>	Typhoid fever with heart involvement	<b>A08.2</b>	Adenoviral enteritis
<b>A01.03</b>	Typhoid pneumonia	<b>A08.31</b>	Calicivirus enteritis
<b>A01.04</b>	Typhoid arthritis	<b>A08.32</b>	Astrovirus enteritis
<b>A01.05</b>	Typhoid osteomyelitis	<b>A08.39</b>	Other viral enteritis
<b>A01.09</b>	Typhoid fever with other complications	<b>A08.8</b>	Other specified intestinal infections
<b>A01.1</b>	Paratyphoid fever A	<b>A09</b>	Infectious gastroenteritis and colitis, unspecified
<b>A01.2</b>	Paratyphoid fever B	<b>A15.0</b>	Tuberculosis of lung
<b>A01.3</b>	Paratyphoid fever C	<b>A15.4</b>	Tuberculosis of intrathoracic lymph nodes
<b>A01.4</b>	Paratyphoid fever, unspecified	<b>A15.5</b>	Tuberculosis of larynx, trachea and bronchus
<b>A02.0</b>	Salmonella enteritis	<b>A15.6</b>	Tuberculous pleurisy
<b>A02.1</b>	Salmonella sepsis	<b>A15.7</b>	Primary respiratory tuberculosis
<b>A02.20</b>	Localized salmonella infection, unspecified	<b>A15.8</b>	Other respiratory tuberculosis
<b>A02.21</b>	Salmonella meningitis	<b>A15.9</b>	Respiratory tuberculosis unspecified
<b>A02.22</b>	Salmonella pneumonia	<b>A17.0</b>	Tuberculous meningitis
<b>A02.23</b>	Salmonella arthritis	<b>A17.1</b>	Meningeal tuberculoma
<b>A02.29</b>	Salmonella with other localized infection	<b>A17.81</b>	Tuberculoma of brain and spinal cord
<b>A02.8</b>	Other specified salmonella infections	<b>A17.82</b>	Tuberculous meningoencephalitis
<b>A02.9</b>	Salmonella infection, unspecified	<b>A17.83</b>	Tuberculous neuritis
<b>A03.0</b>	Shigellosis due to <i>Shigella dysenteriae</i>	<b>A17.89</b>	Other tuberculosis of nervous system
<b>A03.1</b>	Shigellosis due to <i>Shigella flexneri</i>	<b>A17.9</b>	Tuberculosis of nervous system, unspecified
<b>A03.2</b>	Shigellosis due to <i>Shigella boydii</i>	<b>A18.01</b>	Tuberculosis of spine
<b>A03.3</b>	Shigellosis due to <i>Shigella sonnei</i>	<b>A18.02</b>	Tuberculous arthritis of other joints
<b>A03.8</b>	Other shigellosis	<b>A18.03</b>	Tuberculosis of other bones
<b>A03.9</b>	Shigellosis, unspecified	<b>A18.09</b>	Other musculoskeletal tuberculosis
<b>A04.0</b>	Enteropathogenic <i>Escherichia coli</i> infection	<b>A18.10</b>	Tuberculosis of genitourinary system, unspecified
<b>A04.1</b>	Enterotoxigenic <i>Escherichia coli</i> infection	<b>A18.11</b>	Tuberculosis of kidney and ureter
<b>A04.2</b>	Enteroinvasive <i>Escherichia coli</i> infection	<b>A18.12</b>	Tuberculosis of bladder
<b>A04.3</b>	Enterohemorrhagic <i>Escherichia coli</i> infection	<b>A18.13</b>	Tuberculosis of other urinary organs
<b>A04.4</b>	Other intestinal <i>Escherichia coli</i> infections	<b>A18.14</b>	Tuberculosis of prostate
<b>A04.5</b>	Campylobacter enteritis	<b>A18.15</b>	Tuberculosis of other male genital organs
<b>A04.6</b>	Enteritis due to <i>Yersinia enterocolitica</i>	<b>A18.16</b>	Tuberculosis of cervix
<b>A04.71</b>	Enterocolitis due to <i>Clostridium difficile</i> , recurrent	<b>A18.17</b>	Tuberculous female pelvic inflammatory disease
<b>A04.72</b>	Enterocolitis due to <i>Clostridium difficile</i> , not specified as recurrent	<b>A18.18</b>	Tuberculosis of other female genital organs
<b>A04.8</b>	Other specified bacterial intestinal infections	<b>A18.2</b>	Tuberculous peripheral lymphadenopathy
<b>A05.0</b>	Foodborne staphylococcal intoxication	<b>A18.31</b>	Tuberculous peritonitis
<b>A05.1</b>	Botulism food poisoning	<b>A18.32</b>	Tuberculous enteritis
<b>A05.2</b>	Foodborne <i>Clostridium perfringens</i> [ <i>Clostridium welchii</i> ] intoxication	<b>A18.39</b>	Retroperitoneal tuberculosis
<b>A05.3</b>	Foodborne <i>Vibrio parahaemolyticus</i> intoxication	<b>A18.4</b>	Tuberculosis of skin and subcutaneous tissue
<b>A05.4</b>	Foodborne <i>Bacillus cereus</i> intoxication	<b>A18.50</b>	Tuberculosis of eye, unspecified
<b>A05.5</b>	Foodborne <i>Vibrio vulnificus</i> intoxication	<b>A18.51</b>	Tuberculous episcleritis
<b>A05.8</b>	Other specified bacterial foodborne intoxications	<b>A18.52</b>	Tuberculous keratitis
<b>A05.9</b>	Bacterial foodborne intoxication, unspecified	<b>A18.53</b>	Tuberculous chorioretinitis
<b>A06.0</b>	Acute amebic dysentery	<b>A18.54</b>	Tuberculous iridocyclitis
<b>A06.1</b>	Chronic intestinal amebiasis	<b>A18.59</b>	Other tuberculosis of eye
<b>A06.2</b>	Amebic nondysenteric colitis	<b>A18.6</b>	Tuberculosis of (inner) (middle) ear
<b>A06.3</b>	Ameboma of intestine	<b>A18.7</b>	Tuberculosis of adrenal glands
<b>A06.4</b>	Amebic liver abscess	<b>A18.81</b>	Tuberculosis of thyroid gland
<b>A06.5</b>	Amebic lung abscess	<b>A18.82</b>	Tuberculosis of other endocrine glands
<b>A06.6</b>	Amebic brain abscess	<b>A18.83</b>	Tuberculosis of digestive tract organs, not elsewhere classified
<b>A06.7</b>	Cutaneous amebiasis	<b>A18.84</b>	Tuberculosis of heart
<b>A06.81</b>	Amebic cystitis	<b>A18.85</b>	Tuberculosis of spleen
<b>A06.82</b>	Other amebic genitourinary infections	<b>A18.89</b>	Tuberculosis of other sites
<b>A06.89</b>	Other amebic infections	<b>A19.0</b>	Acute miliary tuberculosis of a single specified site
<b>A06.9</b>	Amebiasis, unspecified	<b>A19.1</b>	Acute miliary tuberculosis of multiple sites
<b>A07.0</b>	Balantidiasis	<b>A19.2</b>	Acute miliary tuberculosis, unspecified
<b>A07.1</b>	Giardiasis [lambliasis]	<b>A19.8</b>	Other miliary tuberculosis
<b>A07.2</b>	Cryptosporidiosis	<b>A19.9</b>	Miliary tuberculosis, unspecified
<b>A07.3</b>	Isosporiasis	<b>A20.3</b>	Plague meningitis
<b>A07.4</b>	Cyclosporiasis	<b>A22.7</b>	Anthrax sepsis
		<b>A23.0</b>	Brucellosis due to <i>Brucella melitensis</i>

<b>A23.1</b>	Brucellosis due to <i>Brucella abortus</i>	<b>A43.8</b>	Other forms of nocardiosis
<b>A23.2</b>	Brucellosis due to <i>Brucella suis</i>	<b>A43.9</b>	Nocardiosis, unspecified
<b>A23.3</b>	Brucellosis due to <i>Brucella canis</i>	<b>A44.0</b>	Systemic bartonellosis
<b>A23.8</b>	Other brucellosis	<b>A44.1</b>	Cutaneous and mucocutaneous bartonellosis
<b>A23.9</b>	Brucellosis, unspecified	<b>A44.8</b>	Other forms of bartonellosis
<b>A24.2</b>	Subacute and chronic melioidosis	<b>A44.9</b>	Bartonellosis, unspecified
<b>A26.7</b>	Erysipelothrix sepsis	<b>A48.1</b>	Legionnaires' disease
<b>A27.81</b>	Aseptic meningitis in leptospirosis	<b>A49.01</b>	Methicillin susceptible <i>Staphylococcus aureus</i> infection, unspecified site
<b>A28.1</b>	Cat-scratch disease	<b>A49.02</b>	Methicillin resistant <i>Staphylococcus aureus</i> infection, unspecified site
<b>A30.1</b>	Tuberculous leprosy	<b>A50.01</b>	Early congenital syphilitic ophthalmopathy
<b>A30.2</b>	Borderline tuberculous leprosy	<b>A50.02</b>	Early congenital syphilitic osteochondropathy
<b>A30.3</b>	Borderline leprosy	<b>A50.03</b>	Early congenital syphilitic pharyngitis
<b>A30.4</b>	Borderline lepromatous leprosy	<b>A50.04</b>	Early congenital syphilitic pneumonia
<b>A30.5</b>	Lepromatous leprosy	<b>A50.05</b>	Early congenital syphilitic rhinitis
<b>A30.8</b>	Other forms of leprosy	<b>A50.06</b>	Early cutaneous congenital syphilis
<b>A30.9</b>	Leprosy, unspecified	<b>A50.07</b>	Early mucocutaneous congenital syphilis
<b>A31.0</b>	Pulmonary mycobacterial infection	<b>A50.08</b>	Early visceral congenital syphilis
<b>A31.1</b>	Cutaneous mycobacterial infection	<b>A50.09</b>	Other early congenital syphilis, symptomatic
<b>A31.2</b>	Disseminated mycobacterium avium-intracellulare complex (DMAC)	<b>A50.1</b>	Early congenital syphilis, latent
<b>A31.8</b>	Other mycobacterial infections	<b>A50.2</b>	Early congenital syphilis, unspecified
<b>A31.9</b>	Mycobacterial infection, unspecified	<b>A50.30</b>	Late congenital syphilitic ophthalmopathy, unspecified
<b>A32.0</b>	Cutaneous listeriosis	<b>A50.31</b>	Late congenital syphilitic interstitial keratitis
<b>A32.11</b>	Listerial meningitis	<b>A50.32</b>	Late congenital syphilitic chorioretinitis
<b>A32.12</b>	Listerial meningoencephalitis	<b>A50.39</b>	Other late congenital syphilitic ophthalmopathy
<b>A32.7</b>	Listerial sepsis	<b>A50.40</b>	Late congenital neurosyphilis, unspecified
<b>A32.81</b>	Oculoglandular listeriosis	<b>A50.41</b>	Late congenital syphilitic meningitis
<b>A32.82</b>	Listerial endocarditis	<b>A50.42</b>	Late congenital syphilitic encephalitis
<b>A32.89</b>	Other forms of listeriosis	<b>A50.43</b>	Late congenital syphilitic polyneuropathy
<b>A32.9</b>	Listeriosis, unspecified	<b>A50.44</b>	Late congenital syphilitic optic nerve atrophy
<b>A34</b>	Obstetrical tetanus	<b>A50.45</b>	Juvenile general paresis
<b>A39.0</b>	Meningococcal meningitis	<b>A50.49</b>	Other late congenital neurosyphilis
<b>A39.3</b>	Chronic meningococemia	<b>A50.51</b>	Clutton's joints
<b>A39.50</b>	Meningococcal carditis, unspecified	<b>A50.52</b>	Hutchinson's teeth
<b>A39.51</b>	Meningococcal endocarditis	<b>A50.53</b>	Hutchinson's triad
<b>A39.52</b>	Meningococcal myocarditis	<b>A50.54</b>	Late congenital cardiovascular syphilis
<b>A39.53</b>	Meningococcal pericarditis	<b>A50.55</b>	Late congenital syphilitic arthropathy
<b>A39.81</b>	Meningococcal encephalitis	<b>A50.56</b>	Late congenital syphilitic osteochondropathy
<b>A39.82</b>	Meningococcal retrobulbar neuritis	<b>A50.57</b>	Syphilitic saddle nose
<b>A39.83</b>	Meningococcal arthritis	<b>A50.59</b>	Other late congenital syphilis, symptomatic
<b>A39.84</b>	Postmeningococcal arthritis	<b>A50.6</b>	Late congenital syphilis, latent
<b>A39.89</b>	Other meningococcal infections	<b>A50.7</b>	Late congenital syphilis, unspecified
<b>A39.9</b>	Meningococcal infection, unspecified	<b>A50.9</b>	Congenital syphilis, unspecified
<b>A40.0</b>	Sepsis due to streptococcus, group A	<b>A51.0</b>	Primary genital syphilis
<b>A40.1</b>	Sepsis due to streptococcus, group B	<b>A51.1</b>	Primary anal syphilis
<b>A40.3</b>	Sepsis due to <i>Streptococcus pneumoniae</i>	<b>A51.2</b>	Primary syphilis of other sites
<b>A40.8</b>	Other streptococcal sepsis	<b>A51.31</b>	Condyloma latum
<b>A40.9</b>	Streptococcal sepsis, unspecified	<b>A51.32</b>	Syphilitic alopecia
<b>A41.01</b>	Sepsis due to Methicillin susceptible <i>Staphylococcus aureus</i>	<b>A51.39</b>	Other secondary syphilis of skin
<b>A41.02</b>	Sepsis due to Methicillin resistant <i>Staphylococcus aureus</i>	<b>A51.41</b>	Secondary syphilitic meningitis
<b>A41.1</b>	Sepsis due to other specified staphylococcus	<b>A51.42</b>	Secondary syphilitic female pelvic disease
<b>A41.2</b>	Sepsis due to unspecified staphylococcus	<b>A51.43</b>	Secondary syphilitic ophthalmopathy
<b>A41.3</b>	Sepsis due to <i>Hemophilus influenzae</i>	<b>A51.44</b>	Secondary syphilitic nephritis
<b>A41.4</b>	Sepsis due to anaerobes	<b>A51.45</b>	Secondary syphilitic hepatitis
<b>A41.50</b>	Gram-negative sepsis, unspecified	<b>A51.46</b>	Secondary syphilitic osteopathy
<b>A41.51</b>	Sepsis due to <i>Escherichia coli</i> [E. coli]	<b>A51.49</b>	Other secondary syphilitic conditions
<b>A41.52</b>	Sepsis due to <i>Pseudomonas</i>	<b>A51.5</b>	Early syphilis, latent
<b>A41.53</b>	Sepsis due to <i>Serratia</i>	<b>A51.9</b>	Early syphilis, unspecified
<b>A41.59</b>	Other Gram-negative sepsis	<b>A52.00</b>	Cardiovascular syphilis, unspecified
<b>A41.81</b>	Sepsis due to <i>Enterococcus</i>	<b>A52.01</b>	Syphilitic aneurysm of aorta
<b>A41.89</b>	Other specified sepsis	<b>A52.02</b>	Syphilitic aortitis
<b>A41.9</b>	Sepsis, unspecified organism	<b>A52.03</b>	Syphilitic endocarditis
<b>A42.0</b>	Pulmonary actinomycosis	<b>A52.04</b>	Syphilitic cerebral arteritis
<b>A42.1</b>	Abdominal actinomycosis	<b>A52.05</b>	Other cerebrovascular syphilis
<b>A42.2</b>	Cervicofacial actinomycosis	<b>A52.06</b>	Other syphilitic heart involvement
<b>A42.7</b>	Actinomycotic sepsis	<b>A52.09</b>	Other cardiovascular syphilis
<b>A42.81</b>	Actinomycotic meningitis	<b>A52.10</b>	Symptomatic neurosyphilis, unspecified
<b>A42.82</b>	Actinomycotic encephalitis	<b>A52.11</b>	Tabes dorsalis
<b>A42.89</b>	Other forms of actinomycosis	<b>A52.12</b>	Other cerebrospinal syphilis
<b>A42.9</b>	Actinomycosis, unspecified	<b>A52.13</b>	Late syphilitic meningitis
<b>A43.0</b>	Pulmonary nocardiosis	<b>A52.14</b>	Late syphilitic encephalitis
<b>A43.1</b>	Cutaneous nocardiosis		

# Modifier Descriptors

Modifier	Description
CPT® Modifiers	
22	Increased Procedural Services
23	Unusual Anesthesia
24	Unrelated Evaluation and Management Service by the Same Physician or Other Qualified Health Care Professional During a Postoperative Period
25	Significant, Separately Identifiable Evaluation and Management Service by the Same Physician or Other Qualified Health Care Professional on the Same Day of the Procedure or Other Service
26	Professional Component
27	Multiple Outpatient Hospital E/M Encounters on the Same Date
32	Mandated Services
33	Preventive Services
47	Anesthesia by Surgeon
50	Bilateral Procedure
51	Multiple Procedures
52	Reduced Services
53	Discontinued Procedure
54	Surgical Care Only
55	Postoperative Management Only
56	Preoperative Management Only
57	Decision for Surgery
58	Staged or Related Procedure or Service by the Same Physician or Other Qualified Health Care Professional During the Postoperative Period
59	Distinct Procedural Service
62	Two Surgeons
63	Procedure Performed on Infants less than 4 kg
66	Surgical Team
73	Discontinued Out-Patient Hospital/Ambulatory Surgery Center (ASC) Procedure Prior to the Administration of Anesthesia
74	Discontinued Out-Patient Hospital/Ambulatory Surgery Center (ASC) Procedure After Administration of Anesthesia
76	Repeat Procedure or Service by Same Physician or Other Qualified Health Care Professional
77	Repeat Procedure by Another Physician or Other Qualified Health Care Professional
78	Unplanned Return to the Operating/Procedure Room by the Same Physician or Other Qualified Health Care Professional Following Initial Procedure for a Related Procedure During the Postoperative Period

Modifier	Description
79	Unrelated Procedure or Service by the Same Physician or Other Qualified Health Care Professional During the Postoperative Period
80	Assistant Surgeon
81	Minimum Assistant Surgeon
82	Assistant Surgeon (when qualified resident surgeon not available)
90	Reference (Outside) Laboratory
91	Repeat Clinical Diagnostic Laboratory Test
92	Alternative Laboratory Platform Testing
95	Synchronous Telemedicine Service Rendered Via a Real-Time Interactive Audio and Video Telecommunications System
96	Habilitative Services
97	Rehabilitative Services
99	Multiple Modifiers
Category II Modifiers	
1P	Performance Measure Exclusion Modifier due to Medical Reasons
2P	Performance Measure Exclusion Modifier due to Patient Reasons
3P	Performance Measure Exclusion Modifier due to System Reasons
8P	Performance Measure Reporting Modifier - Action Not Performed, Reason Not Otherwise Specified
HCPCS Level II Modifiers	
A1	Dressing for one wound
A2	Dressing for two wounds
A3	Dressing for three wounds
A4	Dressing for four wounds
A5	Dressing for five wounds
A6	Dressing for six wounds
A7	Dressing for seven wounds
A8	Dressing for eight wounds
A9	Dressing for nine or more wounds
AA	Anesthesia services performed personally by anesthesiologist
AD	Medical supervision by a physician: more than four concurrent anesthesia procedures
AE	Registered dietitian
AF	Specialty physician
AG	Primary physician
AH	Clinical psychologist
AI	Principal physician of record

Modifier	Description
<b>AJ</b>	Clinical social worker
<b>AK</b>	Non participating physician
<b>AM</b>	Physician, team member service
<b>AO</b>	Alternate payment method declined by provider of service
<b>AP</b>	Determination of refractive state was not performed in the course of diagnostic ophthalmological examination
<b>AQ</b>	Physician providing a service in an unlisted health professional shortage area (HPSA)
<b>AR</b>	Physician provider services in a physician scarcity area
<b>AS</b>	Physician assistant, nurse practitioner, or clinical nurse specialist services for assistant at surgery
<b>AT</b>	Acute treatment (this modifier should be used when reporting service 98940, 98941, 98942)
<b>AU</b>	Item furnished in conjunction with a urological, ostomy, or tracheostomy supply
<b>AV</b>	Item furnished in conjunction with a prosthetic device, prosthetic or orthotic
<b>AW</b>	Item furnished in conjunction with a surgical dressing
<b>AX</b>	Item furnished in conjunction with dialysis services
<b>AY</b>	Item or service furnished to an ESRD patient that is not for the treatment of ESRD
<b>AZ</b>	Physician providing a service in a dental health professional shortage area for the purpose of an electronic health record incentive payment
<b>BA</b>	Item furnished in conjunction with parenteral enteral nutrition (PEN) services
<b>BL</b>	Special acquisition of blood and blood products
<b>BO</b>	Orally administered nutrition, not by feeding tube
<b>BP</b>	The beneficiary has been informed of the purchase and rental options and has elected to purchase the item
<b>BR</b>	The beneficiary has been informed of the purchase and rental options and has elected to rent the item
<b>BU</b>	The beneficiary has been informed of the purchase and rental options and after 30 days has not informed the supplier of his/her decision
<b>CA</b>	Procedure payable only in the inpatient setting when performed emergently on an outpatient who expires prior to admission
<b>CB</b>	Service ordered by a renal dialysis facility (RDF) physician as part of the ESRD beneficiary's dialysis benefit, is not part of the composite rate, and is separately reimbursable
<b>CC</b>	Procedure code change (use 'CC' when the procedure code submitted was changed either for administrative reasons or because an incorrect code was filed)

Modifier	Description
<b>CD</b>	AMCC test has been ordered by an ESRD facility or MCP physician that is part of the composite rate and is not separately billable
<b>CE</b>	AMCC test has been ordered by an ESRD facility or MCP physician that is a composite rate test but is beyond the normal frequency covered under the rate and is separately reimbursable based on medical necessity
<b>CF</b>	AMCC test has been ordered by an ESRD facility or MCP physician that is not part of the composite rate and is separately billable
<b>CG</b>	Policy criteria applied
<b>CH</b>	0 percent impaired, limited or restricted
<b>CI</b>	At least 1 percent but less than 20 percent impaired, limited or restricted
<b>CJ</b>	At least 20 percent but less than 40 percent impaired, limited or restricted
<b>CK</b>	At least 40 percent but less than 60 percent impaired, limited or restricted
<b>CL</b>	At least 60 percent but less than 80 percent impaired, limited or restricted
<b>CM</b>	At least 80 percent but less than 100 percent impaired, limited or restricted
<b>CN</b>	100 percent impaired, limited or restricted
<b>CO</b>	Outpatient occupational therapy services furnished in whole or in part by an occupational therapy assistant
<b>CQ</b>	Outpatient physical therapy services furnished in whole or in part by a physical therapist assistant
<b>CR</b>	Catastrophe/disaster related
<b>CS</b>	Cost-sharing waived for specified COVID-19 testing-related services that result in and order for or administration of a COVID-19 test and/or used for cost-sharing waived preventive services furnished via telehealth in rural health clinics and federally qualified health centers during the COVID-19 public health emergency
<b>CT</b>	Computed tomography services furnished using equipment that does not meet each of the attributes of the National Electrical Manufacturers Association (NEMA) XR-29-2013 standard
<b>DA</b>	Oral health assessment by a licensed health professional other than a dentist
<b>E1</b>	Upper left, eyelid
<b>E2</b>	Lower left, eyelid
<b>E3</b>	Upper right, eyelid
<b>E4</b>	Lower right, eyelid
<b>EA</b>	Erythropoietic stimulating agent (ESA) administered to treat anemia due to anti-cancer chemotherapy

# Terminology

Terminology	Explanation
<b>5 fluorouracil</b>	A drug used to treat certain types of cancer.
<b>Ablate</b>	To remove tissue, a body part, or an organ or destroy its function.
<b>Ablation</b>	Removal of tissue, a body part, or an organ or destruction of its function.
<b>ABO incompatibility</b>	An abnormal reaction between blood cells of incompatible blood groups; this results in destruction of blood cells and the formation of clumps.
<b>Absorption</b>	Taking in of substances by tissues.
<b>Acne</b>	Eruptions of small oil secreting glands below the skin surface due to infection or inflammation; also known as pimples.
<b>Acquired immunodeficiency syndrome, or AIDS</b>	An infectious disorder which severely damages the immune system.
<b>Acromegaly</b>	A hormone disorder that develops when a gland in the body produces too much growth hormone causing excess growth of body tissues.
<b>Activities of daily living (ADL)</b>	Basic daily activities of life such as eating, bathing, dressing, toileting and walking.
<b>Acute</b>	A medical condition or injury of sudden onset, sometimes severe in nature, and typically lasts a short period of time; opposite of chronic.
<b>Acute intermittent porphyria</b>	Genetically transmitted disease causing abdominal pain and neurologic symptoms; however, many patients are asymptomatic.
<b>Acute lymphoblastic leukemia</b>	Cancer of the blood cells that mainly affects children and young adults up to 21 years of age.
<b>Acute myeloid leukemia, or AML</b>	Cancer of the white blood cells, in which the blood cells multiply at a very fast rate.
<b>Adenocarcinoma</b>	Malignant tumor in epithelial cells.
<b>Adenoma</b>	A benign tumor of a glandular structure.
<b>Adrenal glands</b>	A pair of glands, located on top of the kidneys, that secrete a variety of hormones and chemicals involved in various body functions such as to regulate heart rate, blood pressure, and other vital functions.
<b>Advance directive</b>	A document which enables a person to make provision for his health care decisions in case if in the future, he becomes unable to make those decisions; include documents such as a living will and a medical power of attorney.
<b>Advanced HIV associated Kaposi's sarcoma, or KS</b>	Rare type of cancer that involves the skin, lungs, liver, and gastric system.
<b>Affinity separation</b>	A biochemical method of dividing substances by binding their specific antigens to specific antibodies.
<b>Afterloading</b>	Placing catheters, which are subsequently loaded with radioactive substance, at the treatment site.
<b>Agglutination</b>	Abnormal clumping of particles of any substances, most commonly in case of abnormal clumping of blood cells due to contact between incompatible blood groups.
<b>Agranulocytes</b>	A type of white blood cell, which has a single nucleus and helps in providing immunity.
<b>Albumin</b>	A liver protein that tells a provider about a patient's liver function and nutritional status by measuring the level of the protein in the blood.
<b>Algorithm</b>	A specific set of step by step calculations using defined inputs at each step to produce a useful output; specifically for MAAAs, the output involves some sort of diagnostic or prognostic information about treatment options or disease outcomes.
<b>Allergy</b>	An adverse reaction that the body has in response to a particular food or substance.
<b>Allogeneic</b>	A tissue graft harvested from one person for another; donors include cadavers and living individuals related or unrelated to the recipient; also called allograft and homograft.
<b>Alpha-2 antiplasmin</b>	A fibrinolysis inhibitor that halts plasmin activity, thereby slowing the process of fibrinolysis.
<b>Amino acids</b>	Organic compounds that combine in chains to form proteins, the body's building blocks, and can provide energy; nonessential amino acids are formed in the body, while essential amino acids must be obtained from food.



Terminology	Explanation
<b>Amplification</b>	Making more copies of desired gene for study by processes such as polymerase chain reaction, called PCR, or transcription of DNA to RNA and reverse transcription from RNA to make an additional copy of the DNA.
<b>Analgesic</b>	Relief or absence of pain.
<b>Androgen</b>	A hormone or compound, usually a steroid, that stimulates or controls male or female hormonal activity or production.
<b>Anemia</b>	Decrease in the amount of red blood cells, which results in a lack of oxygen in the blood.
<b>Aneurysm</b>	Weakness in the wall of a blood vessel or wall of a ventricle of the heart, typically the left ventricle, causing the wall to balloon out; sometimes requiring surgical excision or repair to prevent rupture.
<b>Angiocatheter</b>	A catheter inserted into a blood vessel, typically to instill fluids or medicine, to withdraw blood, or to deliver instruments or devices such as a pressure transducer or balloon.
<b>Antiadrenergic</b>	Achieving the opposite effect of that of adrenaline, a hormone released in response to stress.
<b>Antibiotic</b>	Substance that inhibits infection.
<b>Antibody</b>	An immune system related protein that can detect a harmful substance called an antigen; lab tests may utilize reactions between antibodies and antigens to identify a substance in a patient specimen.
<b>Anticholinergic</b>	A substance that blocks acetylcholine, a neurotransmitter in the brain and nervous system; anticholinergic medications treat a variety of conditions.
<b>Anticoagulant drug</b>	An anticoagulant is a drug that causes a delay in clotting of blood, thus preventing the chances of myocardial infarction, stroke, blood clot in the brain, or deep vein thrombosis.
<b>Antiemetic</b>	A drug used to prevent or relieve nausea and vomiting.
<b>Antigen</b>	Foreign bodies, such as bacteria, that enter the human body, or substances that form within the body, that cause an immune response, such as antibody production, and possibly infection; lab tests may utilize reactions between antibodies and antigens to identify a substance in a patient specimen.
<b>Antihemophilic agent</b>	An agent that works to stop the bleeding tendency in bleeding disorders, such as hemophilia.
<b>Antihistamine</b>	A drug that blocks the action of histamine in the body; histamine is responsible for allergic symptoms.
<b>Antineoplastic</b>	A drug or other substance capable of killing or slowing the growth of tumors or malignant cells.
<b>Antithrombin</b>	A naturally occurring protein in the body produced by the liver that helps regulate the formation blood clot.
<b>Anus</b>	The distal opening of the large intestine.
<b>Apheresis</b>	A procedure in which the blood of a donor or patient is passed through an apparatus that separates out one particular constituent and returns the remainder to the circulation.
<b>Arc therapy</b>	A form of radiation therapy that uses equipment that produces single or multiple radiation beams that sweep, or arc, up to 360 degrees around the patient so a concentrated beam can target all sides of the tumor as it follows the contours of the tumor instead of impacting healthy tissue around it.
<b>Arrhythmia</b>	Irregular rate or rhythm of the heartbeat.
<b>Arterial vessels</b>	Vessels that carry oxygen rich blood away from the heart to the rest of the body.
<b>Arthritis</b>	An inflammatory condition affecting one or more of the body's joints, resulting in pain, swelling, and limitation of movement.
<b>Aseptic</b>	Conditions characterized by freedom from contamination by any microorganism.
<b>Aspergillosis</b>	Any one of a group of fungal infections caused by the mold <i>Aspergillus</i> , a common type of fungus that can be readily found indoors and outdoors.
<b>Aspirate</b>	Small amount of cells or fluid from a cyst or mass.
<b>Aspiration</b>	Removal of fluid, gas, or other material through a tube attached to a suction device, often combined with irrigation, the instillation of fluid to clean a wound or to wash out a cavity such as the abdomen or stomach.
<b>Assay</b>	A laboratory test to find or measure the quantity of some entity, called the analyte, or to find or measure some property of the analyte, such as functional activity.
<b>Atherosclerosis</b>	Formation of plaque in the walls of the arteries that lead to hardening of the artery and reduction in blood flow.
<b>Atrial fibrillation</b>	A heart rhythm disorder where the atrial appendage, a small pouch in the heart, does not squeeze rhythmically with the left atrium, causing blood inside the pouch to become stagnant and prone to produce blood clots.
<b>Autoantibody</b>	An antibody that reacts to tissues or cells of the body that produced it.

# Code Index

Codes	Page No.	Codes	Page No.	Codes	Page No.	Codes	Page No.	Codes	Page No.
0011M	544	0026U	549	32994	18	55880	46	+77002	76
0012M	544	0039U	549	36415	19	55920	47	77011	77
0013M	545	0045U	550	36456	19	59012	48	77012	78
0015M	546	0046U	551	36591	20	71045	50	77013	78
0016M	547	0047U	552	36593	20	71046	50	77014	79
0017M	547	0048U	552	38204	22	71047	51	77021	80
+0174T	525	0049U	553	38205	22	71048	51	77022	81
0175T	525	0050U	554	38206	23	71250	52	77046	81
0232T	525	0053U	555	38207	24	71260	53	77047	82
0263T	526	0058U	555	38208	24	71270	53	77048	83
0264T	527	0059U	556	38209	25	71550	54	77049	83
0265T	527	0067U	557	38210	26	71551	55	77053	84
0278T	528	0069U	557	38211	26	71552	57	77054	85
0351T	528	0079U	558	38212	27	71555	58	77061	85
0352T	529	0163U	559	38213	28	76000	59	77062	86
0353T	529	0172U	560	38214	28	76377	60	+77063	86
0354T	530	0174U	560	38215	29	76390	60	77065	87
0394T	530	0177U	561	38220	29	76391	61	77066	88
0395T	531	0179U	562	38221	30	76496	62	77067	88
0419T	533	0204U	562	38222	32	76497	62	77084	89
0420T	533	0211U	563	38230	33	76498	63	77261	90
0421T	534	0220U	564	38240	34	76499	64	77262	90
0422T	535	+10004	5	44388	35	76604	64	77263	91
+0443T	535	10005	5	44389	35	76641	65	77280	92
0481T	536	+10006	6	44390	36	76642	66	77285	92
0546T	536	10007	7	44391	37	76700	66	77290	93
0564T	537	+10008	8	44392	38	76705	68	+77293	94
0581T	538	10009	9	44394	38	76940	69	77295	94
0582T	539	+10010	10	44401	39	76942	70	77299	95
0655T	539	10011	11	44402	40	76965	71	77300	96
0662T	540	+10012	12	44403	40	76978	71	77301	97
+0663T	540	10021	13	44404	41	+76979	72	77306	98
0673T	541	11981	15	44405	42	76981	73	77307	99
0686T	541	11982	15	44406	42	76982	73	77316	100
0708T	542	11983	16	44407	43	+76983	74	77317	101
+0709T	542	+19294	16	44408	44	76999	75	77318	102

# Thank You for Your Contribution to the Hardship Fund

Book purchases raised over **\$100,000** to assist members over the last year.



Thanks to your book purchase, AAPC will be able to help even more members who face financial difficulty through the Hardship Fund.

The Hardship Fund is a financial aid program created to assist our members with:

- ✓ **Maintaining their membership and certification through membership renewal dues, exam prep tools and more**
- ✓ **Registration for national or regional conferences**
- ✓ **Certain local chapter events**

All awards are based on the availability of funds and the applicant's ability to demonstrate reasonable hardship. A portion of each book sale goes to helping more applicants through their time of need. We appreciate your contribution and your support for your fellow AAPC members.

To learn more about the Hardship Fund and its efforts or apply for financial assistance, **visit [aapc.com](https://www.aapc.com)**.



2233 South Presidents Dr., Suite F  
Salt Lake City, Utah 84120. Fax 801-236-2258  
[www.aapc.com](https://www.aapc.com) | 800-626-2633

CSG: Oncology/Hematology 2023



9 781646 317141

ISBN: 978-1-646317-141

eBook ISBN: 978-1-646317-363