



Coders' Specialty Guide Pulmonology

Your essential illustrated coding guide for pulmonology, including CPT®, HCPCS, tips, CPT® to ICD-10 CrossRef, CCI edits, and RVU information.



Benefiting
**susan G.
komen®** 

See back for details

2021

Contents

Introduction	3
General	5
Musculoskeletal System	15
Respiratory System	17
Hemic and Lymphatic Systems	253
Mediastinum and Diaphragm	254
Operating Microscope	256
Radiology	257
Pathology and Laboratory	291
Medicine	298
Evaluation and Management	383
Category III Codes	486
HCPCS Codes	
• Medical and Surgical Supplies	501
• Outpatient PPS	502
• Procedures/Professional Services	503
• Drugs Administered Other Than Oral Method	516
• Durable Medical Equipment (DME)	517
• Miscellaneous Medical Services	518
• Temporary Codes	519
• Temporary National Codes (Non-Medicare)	520
ICD-10 CrossRef Details	523
Modifier Descriptors	627
Terminology	637
Code Index	655

+10004

Fine needle aspiration biopsy, without imaging guidance; each additional lesion (List separately in addition to code for primary procedure)

Clinical Responsibility

With the patient properly prepared and anesthetized (typically with local anesthesia) and following FNA of an initial lesion, the provider inserts a needle, such as an 18- to 25-gauge needle with an attached syringe, into an additional suspicious lesion or area of tissue and withdraws cells, tissue, or fluid for laboratory analysis. The provider may make several passes to obtain an adequate specimen. The provider then sends the aspirate to the pathology lab for analysis.

Coding Tips

For FNA of an initial lesion using imaging guidance, see 10005 (ultrasound), 10007 (fluoroscopy), 10009 (CT), and 10011 (MRI) and +10006, +10008, +10010 and +10012 for each additional lesion respectively.

Fee Schedule

Medicare Fees National Conversion Factor: 36.0896, Facility: \$45.11, Non Facility: \$53.41, OPFS Facility: \$28.87, OPFS Non Facility: \$28.87

RVU Facility Work RVU: 0.80, PE RVU: 0.34, Malpractice RVU: 0.11, Total RVU: 1.25

RVU Non-Facility Work RVU: 0.80, PE RVU: 0.57, Malpractice RVU: 0.11, Total RVU: 1.48

Indicators Preoperative: 0.00, Intraoperative: 0.00, Postoperative: 0.00, Total RVU: 0, Global Period: ZZZ, Radiology Diagnostic Test: 99, Code Status: A, PC/TC Indicator: 0, Endoscopic Base Code: None, MUE: 3

Modifier Allowances 22, 52, 53, 58, 59, 76, 77, 78, 79, 80, 81, 82, 99, AQ, AR, AS, GA, GC, GZ, LT, PD, Q6, QJ, RT, SA, SC, XE, XP, XS, XU

CCI Alerts (version 25.3)

0213T¹, 0216T¹, 10012¹, 10035¹, 19281¹, 19283¹, 19285¹, 19287¹, 36000¹, 36410¹, 36591⁰, 36592⁰, 61650¹, 62324¹, 62325¹, 62326¹, 62327¹, 64415¹, 64416¹, 64417¹, 64450¹, 64486¹, 64487¹, 64488¹, 64489¹, 64490¹, 64493¹, 76000¹, 76380¹, 76942¹, 76970¹, 76998¹, 77001¹, 77002¹, 77012¹, 77021¹, 96360¹, 96365¹, 96372¹, 96374¹, 96375¹, 96376¹, 96377¹, 96523⁰, J2001¹

ICD-10 CrossRef

C00.3, C01, C02.9, C04.1, C06.9, C07, C08.0, C12, C13.9, C15.9, C22.0-C22.4, C22.7, C22.8, C32.1, C32.8, C34.30-C34.32, C43.20-C43.22, C43.30-C43.39, C43.51-C43.59, C43.60-C43.62, C46.0, C50.011-C50.019, C50.111-C50.119, C50.211-C50.219, C50.411-C50.419, C50.811-C50.819, C50.911-C50.919, C51.9, C76.0, C76.1, C77.0, C77.3, C79.2, C79.81, C79.89, C79.9, C82.50, C82.51, C82.55, C82.59, C83.31-C83.35, C84.90, C84.91, C84.95, C84.99, C84.A0, C84.A1, C84.A5, C84.A9, C84.Z0, C84.Z1, C84.Z5, C84.Z9, C85.10, C85.11, C85.15, C85.19, C85.20, C85.21, C85.25, C85.29, C85.80, C85.81, C85.85, C85.89, C85.90, C85.91, C85.95,

Modifier: 0 = not allowed, 1 = allowed

C85.99, C86.0, C86.4, C88.8, C94.40-C94.42, C94.6, D03.20-D03.22, D03.30, D03.39, D03.51-D03.59, D03.60-D03.62, D05.00-D05.02, D05.10-D05.12, D05.80-D05.82, D05.90-D05.92, D11.0-D11.9, D17.0, D17.1, D17.20-D17.24, D17.30, D17.39, D17.72, D17.79, D17.9, D19.7, D21.0, D22.5, D22.70-D22.72, D23.5, D23.70-D23.72, D36.0, D36.7, D37.030-D37.039, D44.0-D44.2, D44.9, D47.1, D47.2, D47.9, D47.Z9, D48.0-D48.2, D48.60-D48.62, D48.7, D48.9, D49.0-D49.7, D49.9, D64.9, D75.9, D78.01, D78.02, D78.21, D78.22, D89.2, E01.0-E01.2, E03.4, E03.9, E04.0-E04.9, E06.0, E07.89, E07.9, E35, E36.01, E36.02, E65, E78.71, E89.820-E89.823, G97.31, G97.32, G97.51, G97.52, G97.63, G97.64, H66.10-H66.13, H69.80-H69.83, H93.8X1-H93.8X3, H93.8X9, H94.80-H94.83, H95.21, H95.22, H95.41, H95.42, H95.53, H95.54, I42.0-I42.5, I42.8, I42.9, I70.235, I70.245, I70.335, I70.345, I70.435, I70.445, I70.535, I70.545, I70.635, I70.645, I70.735, I70.745, I82.91, I88.1-I88.9, I89.8, I97.410-I97.418, I97.42, I97.610-I97.618, I97.622, I97.640-I97.648, J95.61, J95.62, J95.830, J95.831, J95.862, J95.863, J98.4, K11.20-K11.23, K11.3-K11.6, K11.9, K91.61, K91.62, K91.840, K91.841, K91.870-K91.873, L02.31, L02.415, L02.416, L02.419, L02.91, L03.115, L03.116, L03.119, L03.125, L03.126, L03.129, L03.317, L03.327, L03.90, L03.91, L57.0, L76.01, L76.02, L76.21, L76.22, L76.31-L76.34, L97.501-L97.504, L97.509, L97.511-L97.514, L97.519, L97.521-L97.524, L97.529, L98.3, L98.7, M54.2, M70.20-M70.22, M71.30, M77.10-M77.12, M79.4, M81.0, M96.810, M96.811, M96.830, M96.831, M96.840-M96.843, N18.3, N60.01-N60.09, N60.11-N60.19, N61.0, N62, N63.0, N63.10-N63.15, N63.20-N63.25, N63.31, N63.32, N63.41, N63.42, N64.1, N64.4, N99.61, N99.62, N99.820, N99.821, N99.840-N99.843, Q18.0-Q18.9, Q87.2, Q87.3, Q87.5, Q87.81, Q87.89, Q89.2, Q89.8, R13.0, R13.10, R18.8, R19.02, R20.8, R20.9, R22.0-R22.2, R22.30-R22.33, R22.40-R22.43, R22.9, R29.4, R59.0-R59.9, R68.89, R69, R90.0, R92.1, R92.8, R99, S90.421D, S90.422D, S90.423D, S90.424D, S90.425D, S90.426D, S90.521D, S90.522D, S90.529D, S90.821D, S90.822D, S90.829D, S90.869A, Z00.6, Z12.89, Z85.21, Z85.3, Z85.6, Z86.79

10005

Fine needle aspiration biopsy, including ultrasound guidance; first lesion

Clinical Responsibility

With the patient properly prepared and anesthetized (typically with local anesthesia), the provider inserts a needle, such as an 18- to 25-gauge needle with an attached syringe, under ultrasound imaging guidance into a suspicious lesion or area of tissue and withdraws cells, tissue, or fluid for laboratory analysis. The provider may make several passes to obtain an adequate specimen. The provider then sends the aspirate to the pathology lab for analysis.

Coding Tips

Report +10006 for each additional lesion in addition to the primary code 10005.

For FNA of an initial lesion using other types of imaging guidance, see 10007 (fluoroscopy), 10009 (CT), and 10011 (MRI) and +10008, +10010 and +10012 for each additional lesion respectively.

If different imaging guidance modalities are used for separate lesions, add modifier 59, Distinct procedural service, to the appropriate primary code.

For FNA without imaging guidance, report 10021 for the initial lesion and +10004 for each additional lesion.

Fee Schedule

Medicare Fees National Conversion Factor: 36.0896, Facility: \$74.71, Non Facility: \$132.45, OPPS Facility: \$52.69, OPPS Non Facility: \$52.69

RVU Facility Work RVU: 1.46, PE RVU: 0.48, Malpractice RVU: 0.13, Total RVU: 2.07

RVU Non-Facility Work RVU: 1.46, PE RVU: 2.08, Malpractice RVU: 0.13, Total RVU: 3.67

Indicators Preoperative: 0.00, Intraoperative: 0.00, Postoperative: 0.00, Total RVU: 0, Global Period: XXX, Radiology Diagnostic Test: 99, Code Status: A, PC/TC Indicator: 0, Endoscopic Base Code: None, MUE: 1

Modifier Allowances 22, 52, 53, 58, 59, 76, 77, 78, 79, 80, 81, 82, 99, AQ, AR, AS, GA, GC, GZ, LT, PD, Q6, QJ, RT, SA, SC, XE, XP, XS, XU

CCI Alerts (version 25.3)

0213T¹, 0216T¹, 10004¹, 10008¹, 10010¹, 10011¹, 10012¹, 10021¹, 10035¹, 11102¹, 11103¹, 11104¹, 11105¹, 11106¹, 11107¹, 19281¹, 19283¹, 19285¹, 19287¹, 36000¹, 36410¹, 36591⁰, 36592⁰, 61650¹, 62324¹, 62325¹, 62326¹, 62327¹, 64415¹, 64416¹, 64417¹, 64450¹, 64486¹, 64487¹, 64488¹, 64489¹, 64490¹, 64493¹, 76000¹, 76380¹, 76942¹, 76970¹, 76998¹, 77001¹, 77002¹, 77012¹, 77021¹, 96360¹, 96365¹, 96372¹, 96374¹, 96375¹, 96376¹, 96377¹, 96523⁰, J2001¹

ICD-10 CrossRef

C00.3, C01, C02.9, C04.1, C06.9, C07, C08.0, C12, C13.9, C15.9, C22.0-C22.4, C22.7, C22.8, C32.1, C32.8, C34.30-C34.32, C43.20-C43.22, C43.30-C43.39, C43.51-C43.59, C43.60-C43.62, C46.0, C50.011-C50.019, C50.111-C50.119, C50.211-C50.219, C50.411-C50.419, C50.811-C50.819, C50.911-C50.919, C51.9, C76.0, C76.1, C77.0, C77.3, C79.2, C79.81, C79.89, C79.9, C81.00-C81.09, C81.10-C81.19, C81.20-C81.29, C81.30-C81.39, C81.40-C81.49, C81.70-C81.79, C81.90-C81.99, C82.00-C82.09, C82.10-C82.19, C82.20-C82.29, C82.30-C82.39, C82.40-C82.49, C82.50-C82.59, C82.60-C82.69, C82.80-C82.89, C82.90-C82.99, C83.00-C83.09, C83.10-C83.19, C83.30-C83.39, C83.50-C83.59, C83.70-C83.79, C83.80-C83.89, C83.90-C83.99, C84.40-C84.49, C84.60-C84.69, C84.70-C84.79, C84.90-C84.99, C84.A0-C84.A9, C84.Z0-C84.Z9, C85.10-C85.19, C85.20-C85.29, C85.80-C85.89, C85.90-C85.99, C86.0-C86.5, C88.4, C88.8, C91.50-C91.52, C94.40-C94.42, C94.6, D03.20-D03.22, D03.30, D03.39, D03.51-D03.59, D03.60-D03.62, D05.00-D05.02, D05.10-D05.12, D05.80-D05.82, D05.90-D05.92, D11.0-D11.9, D17.0, D17.1, D17.20-D17.24, D17.30, D17.39, D17.72, D17.79, D17.9, D19.7, D21.0, D22.5, D22.70-D22.72, D23.5, D23.70-D23.72, D36.0, D36.7, D37.030-D37.039, D44.0-D44.2, D44.9, D47.1, D47.2, D47.9, D47.Z9, D48.1, D48.2, D48.60-D48.62, D48.7, D48.9, D49.0-D49.7, D49.9, D64.9, D75.9, D78.01, D78.02, D78.21, D78.22, D89.2, E01.0-E01.2, E03.4, E03.9, E04.0-E04.9, E06.0, E07.89, E07.9, E35, E36.01, E36.02, E65, E78.71, E89.820-E89.823, G97.31, G97.32, G97.51, G97.52, G97.63, G97.64, H66.10-H66.13, H69.80-H69.83, H93.8X1-H93.8X3, H93.8X9, H94.80-H94.83, H95.21, H95.22, H95.41, H95.42, H95.53, H95.54, I42.0-I42.5, I42.8, I42.9, I70.235, I70.245, I70.335, I70.345, I70.435, I70.445, I70.535, I70.545, I70.635, I70.645, I70.735, I70.745, I82.91, I88.1-I88.9, I89.8, I97.410-I97.418, I97.42, I97.610-I97.618, I97.622, I97.640-I97.648, J95.61, J95.62, J95.830, J95.831, J95.862, J95.863, J98.4,

K11.20-K11.23, K11.3-K11.6, K11.9, K91.61, K91.62, K91.840, K91.841, K91.870-K91.873, L02.31, L02.415, L02.416, L02.419, L02.91, L03.115, L03.116, L03.119, L03.125, L03.126, L03.129, L03.317, L03.327, L03.90, L03.91, L57.0, L76.01, L76.02, L76.21, L76.22, L76.31-L76.34, L97.501-L97.504, L97.509, L97.511-L97.514, L97.519, L97.521-L97.524, L97.529, L98.3, L98.7, M71.30, M79.4, M96.810, M96.811, M96.830, M96.831, M96.840-M96.843, N60.01-N60.09, N60.11-N60.19, N61.0, N62, N63.0, N63.10-N63.15, N63.20-N63.25, N63.31, N63.32, N63.41, N63.42, N64.1, N99.61, N99.62, N99.820, N99.821, N99.840-N99.843, R18.8, R19.02, R20.8, R20.9, R22.0-R22.2, R22.30-R22.33, R22.40-R22.43, R22.9, R59.0-R59.9, R90.0, R92.1, R92.8, S14.111A-S14.111S, S14.112A-S14.112S, S14.113A-S14.113S, S14.114A-S14.114S, S14.115A-S14.115S, S14.116A-S14.116S, S14.117A-S14.117S, S14.118A-S14.118S, S14.119A-S14.119S, S14.151A-S14.151S, S14.152A-S14.152S, S14.153A-S14.153S, S14.154A-S14.154S, S14.155A-S14.155S, S14.156A-S14.156S, S14.157A-S14.157S, S14.158A-S14.158S, S14.159A-S14.159S, S24.111A-S24.111S, S24.112A-S24.112S, S24.113A-S24.113S, S24.114A-S24.114S, S24.119A-S24.119S, S24.151A-S24.151S, S24.152A-S24.152S, S24.153A-S24.153S, S24.154A-S24.154S, S24.159A-S24.159S, S34.111A-S34.111S, S34.112A-S34.112S, S34.113A-S34.113S, S34.114A-S34.114S, S34.115A-S34.115S, S34.119A-S34.119S, S34.121A-S34.121S, S34.122A-S34.122S, S34.123A-S34.123S, S34.124A-S34.124S, S34.125A-S34.125S, S34.129A-S34.129S, S90.869A, Z00.6, Z12.89, Z85.21, Z85.3, Z85.6, Z85.71, Z85.72

+10006

Fine needle aspiration biopsy, including ultrasound guidance; each additional lesion (List separately in addition to code for primary procedure)

Clinical Responsibility

With the patient properly prepared and anesthetized (typically with local anesthesia) and following FNA of an initial lesion, the provider inserts a needle, such as an 18- to 25-gauge needle with an attached syringe, under ultrasound imaging guidance into an additional suspicious lesion or area of tissue and withdraws cells, tissue, or fluid for laboratory analysis. The provider may make several passes to obtain an adequate specimen. The provider then sends the aspirate to the pathology lab for analysis.

Coding Tips

For FNA of an initial lesion using other types of imaging guidance, see 10007 (fluoroscopy), 10009 (CT), and 10011 (MRI) and +10008, +10010 and +10012 for each additional lesion respectively.

For FNA without imaging guidance, report 10021 for the initial lesion and +10004 for each additional lesion.

Fee Schedule

Medicare Fees National Conversion Factor: 36.0896, Facility: \$51.25, Non Facility: \$61.35, OPPS Facility: \$36.09, OPPS Non Facility: \$36.09

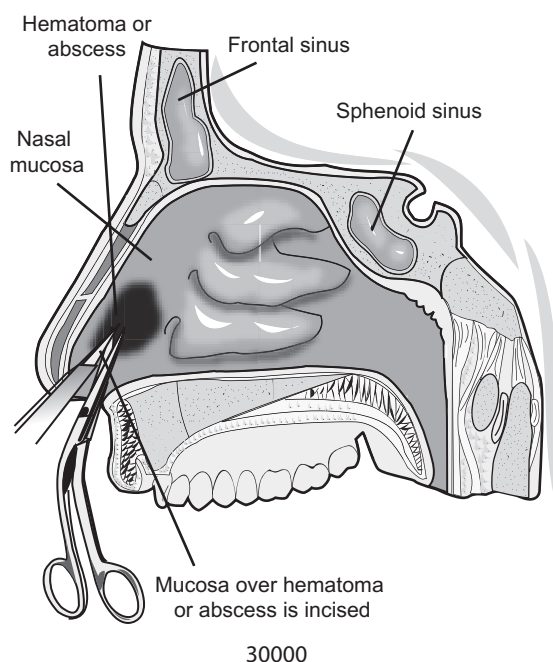
RVU Facility Work RVU: 1.00, PE RVU: 0.33, Malpractice RVU: 0.09, Total RVU: 1.42

30000

Drainage abscess or hematoma, nasal, internal approach

Clinical Responsibility

When the patient is appropriately prepped and anesthetized, the provider makes a small incision within the nasal mucosa over the abscess or hematoma. He then gently suctions and flushes the fluid filled pocket with sterile saline. After he achieves hemostasis, he may secure a drain and then he closes the operative site in layers.

Illustration**Fee Schedule**

Medicare Fees National Conversion Factor: 36.0896, Facility: \$121.98, Non Facility: \$259.12, OPPS Facility: \$53.41, OPPS Non Facility: \$53.41

RVU Facility Work RVU: 1.48, PE RVU: 1.68, Malpractice RVU: 0.22, Total RVU: 3.38

RVU Non-Facility Work RVU: 1.48, PE RVU: 5.48, Malpractice RVU: 0.22, Total RVU: 7.18

Indicators Preoperative: 10.00, Intraoperative: 80.00, Postoperative: 10.00, Total RVU: 100, Global Period: 010, Radiology Diagnostic Test: 99, Code Status: A, PC/TC Indicator: 0, Endoscopic Base Code: None, MUE: 1

Modifier Allowances 22, 47, 51, 52, 53, 54, 55, 56, 58, 59, 63, 76, 77, 78, 79, 80, 81, 82, 99, AQ, AR, AS, CR, ET, GA, GC, GJ, GR, KX, PD, Q5, Q6, QJ, XE, XP, XS, XU

CCI Alerts (version 25.3)

0213T⁰, 0216T⁰, 0228T⁰, 0230T⁰, 10030¹, 10140¹, 12001¹, 12002¹, 12004¹, 12005¹, 12006¹, 12007¹, 12011¹, 12013¹, 12014¹, 12015¹, 12016¹, 12017¹, 12018¹, 12020¹, 12021¹, 12031¹, 12032¹, 12034¹, 12035¹, 12036¹, 12037¹, 12041¹, 12042¹, 12044¹, 12045¹, 12046¹, 12047¹, 12051¹, 12052¹, 12053¹, 12054¹, 12055¹, 12056¹, 12057¹, 13100¹, 13101¹, 13102¹, 13120¹, 13121¹, 13122¹, 13131¹, 13132¹, 13133¹, 13151¹, 13152¹, 13153¹, 30200¹, 30801¹, 36000¹, 36400¹, 36405¹, 36406¹, 36410¹, 36420¹, 36425¹, 36430¹, 36440¹, 36591⁰, 36592⁰, 36600¹, 36640¹, 43752¹, 51701¹, 51702¹, 51703¹, 62320⁰, 62321⁰, 62322⁰, 62323⁰, 62324⁰, 62325⁰, 62326⁰, 62327⁰, 64400⁰, 64402⁰, 64405⁰, 64408⁰, 64410⁰, 64413⁰, 64415⁰, 64416⁰, 64417⁰, 64418⁰, 64420⁰, 64421⁰, 64425⁰, 64430⁰, 64435⁰, 64445⁰, 64446⁰, 64447⁰, 64448⁰, 64449⁰, 64450⁰, 64461⁰, 64462⁰, 64463⁰, 64479⁰, 64480⁰, 64483⁰, 64484⁰, 64486⁰, 64487⁰, 64488⁰, 64489⁰, 64490⁰, 64491⁰, 64492⁰, 64493⁰, 64494⁰, 64495⁰, 64505⁰, 64510⁰, 64517⁰, 64520⁰, 64530⁰, 69990⁰, 92012¹, 92014¹, 92502⁰, 93000¹, 93005¹, 93010¹, 93040¹, 93041¹, 93042¹, 93318¹, 93355¹, 94002¹, 94200¹, 94250¹, 94680¹, 94681¹, 94690¹, 94770¹, 95812¹, 95813¹, 95816¹, 95819¹, 95822¹, 95829¹, 95955¹, 96360¹, 96361¹, 96365¹, 96366¹, 96367¹, 96368¹, 96372¹, 96374¹, 96375¹, 96376¹, 96377¹, 96523⁰, 99155⁰, 99156⁰, 99157⁰, 99211¹, 99212¹, 99213¹, 99214¹, 99215¹, 99217¹, 99218¹, 99219¹, 99220¹, 99221¹, 99222¹, 99223¹, 99231¹, 99232¹, 99233¹, 99234¹, 99235¹, 99236¹, 99238¹, 99239¹, 99241¹, 99242¹, 99243¹, 99244¹, 99245¹, 99251¹, 99252¹, 99253¹, 99254¹, 99255¹, 99291¹, 99292¹, 99304¹, 99305¹, 99306¹, 99307¹, 99308¹, 99309¹, 99310¹, 99315¹, 99316¹, 99334¹, 99335¹, 99336¹, 99337¹, 99347¹, 99348¹, 99349¹, 99350¹, 99374¹, 99375¹, 99377¹, 99378¹, 99446⁰, 99447⁰, 99448⁰, 99449⁰, 99451⁰, 99452⁰, 99495⁰, 99496⁰, G0463¹, G0471¹, J0670¹, J2001¹

ICD-10 CrossRef

G44.1, J34.0, J34.1, J34.89, J34.9, J95.61, J95.62, J95.860, J95.861, L76.01, L76.02, L76.31, L76.32, M70.98, R09.81, R50.82, R51, S01.20XA, S01.21XA, S01.22XA, S01.23XA, S01.24XA, S01.25XA, S02.2XXA, S02.2XXB, S09.93XA, T81.33XA

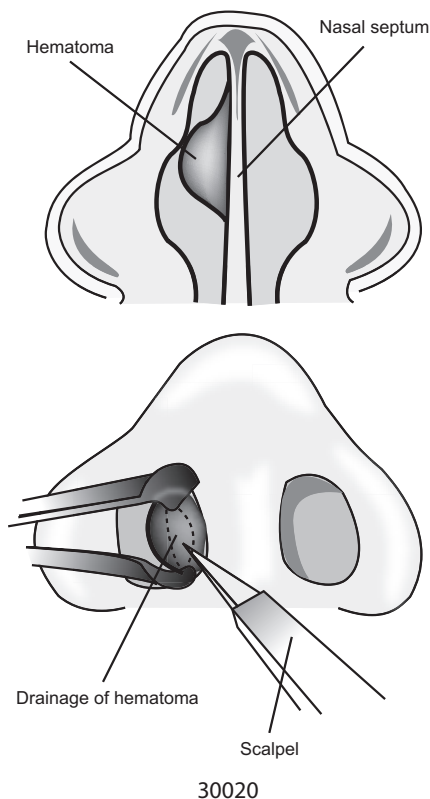
30020

Drainage abscess or hematoma, nasal septum

Clinical Responsibility

When the patient is appropriately prepped and anesthetized, the provider makes a small incision within the nasal septum over the abscess or hematoma. He then gently suctions and flushes the fluid filled pocket with sterile saline. After achieving hemostasis, he may secure a drain, which he will remove usually within 48 hours. He may also pack the nasal cavity with gauze to compress the site and help with drainage. Finally, he may close the operative site in layers or leave it open to heal on its own.

Illustration



30020

Fee Schedule

Medicare Fees National Conversion Factor: 36.0896, Facility: \$122.70, Non Facility: \$261.65, OPPS Facility: \$53.41, OPPS Non Facility: \$53.41

RVU Facility Work RVU: 1.48, PE RVU: 1.70, Malpractice RVU: 0.22, Total RVU: 3.40

RVU Non-Facility Work RVU: 1.48, PE RVU: 5.55, Malpractice RVU: 0.22, Total RVU: 7.25

Indicators Preoperative: 10.00, Intraoperative: 80.00, Postoperative: 10.00, Total RVU: 100, Global Period: 010, Radiology Diagnostic Test: 99, Code Status: A, PC/TC Indicator: 0, Endoscopic Base Code: None, MUE: 1

Modifier Allowances 22, 47, 51, 52, 53, 54, 55, 56, 58, 59, 63, 76, 77, 78, 79, 99, AQ, AR, CR, ET, GA, GC, GJ, GR, KX, PD, Q5, Q6, QJ, XE, XP, XS, XU

CCI Alerts (version 25.3)

0213T⁰, 0216T⁰, 0228T⁰, 0230T⁰, 12001¹, 12002¹, 12004¹, 12005¹, 12006¹, 12007¹, 12011¹, 12013¹, 12014¹, 12015¹, 12016¹, 12017¹, 12018¹, 12020¹, 12021¹, 12031¹, 12032¹, 12034¹, 12035¹, 12036¹, 12037¹, 12041¹, 12042¹, 12044¹, 12045¹, 12046¹, 12047¹, 12051¹, 12052¹, 12053¹, 12054¹, 12055¹, 12056¹, 12057¹, 13100¹, 13101¹, 13102¹, 13120¹, 13121¹, 13122¹, 13131¹, 13132¹, 13133¹, 13151¹, 13152¹, 13153¹, 30000¹, 30200¹, 30801¹, 36000¹, 36400¹, 36405¹, 36406¹, 36410¹, 36420¹, 36425¹, 36430¹, 36440¹, 36591⁰, 36592⁰, 36600¹, 36640¹, 43752¹, 51701¹, 51702¹, 51703¹, 62320⁰, 62321⁰, 62322⁰, 62323⁰, 62324⁰, 62325⁰, 62326⁰, 62327⁰, 64400⁰, 64402⁰, 64405⁰, 64408⁰, 64410⁰, 64413⁰, 64415⁰, 64416⁰, 64417⁰, 64418⁰, 64420⁰, 64421⁰, 64425⁰, 64430⁰, 64435⁰, 64445⁰, 64446⁰, 64447⁰,

64448⁰, 64449⁰, 64450⁰, 64461⁰, 64462⁰, 64463⁰, 64479⁰, 64480⁰, 64483⁰, 64484⁰, 64486⁰, 64487⁰, 64488⁰, 64489⁰, 64490⁰, 64491⁰, 64492⁰, 64493⁰, 64494⁰, 64495⁰, 64505⁰, 64510⁰, 64517⁰, 64520⁰, 64530⁰, 69990⁰, 92012¹, 92014¹, 92502⁰, 93000¹, 93005¹, 93010¹, 93040¹, 93041¹, 93042¹, 93318¹, 93355¹, 94002¹, 94200¹, 94250¹, 94680¹, 94681¹, 94690¹, 94770¹, 95812¹, 95813¹, 95816¹, 95819¹, 95822¹, 95829¹, 95955¹, 96360¹, 96361¹, 96365¹, 96366¹, 96367¹, 96368¹, 96372¹, 96374¹, 96375¹, 96376¹, 96377¹, 96523⁰, 99155⁰, 99156⁰, 99157⁰, 99211¹, 99212¹, 99213¹, 99214¹, 99215¹, 99217¹, 99218¹, 99219¹, 99220¹, 99221¹, 99222¹, 99223¹, 99231¹, 99232¹, 99233¹, 99234¹, 99235¹, 99236¹, 99238¹, 99239¹, 99241¹, 99242¹, 99243¹, 99244¹, 99245¹, 99251¹, 99252¹, 99253¹, 99254¹, 99255¹, 99291¹, 99292¹, 99304¹, 99305¹, 99306¹, 99307¹, 99308¹, 99309¹, 99310¹, 99315¹, 99316¹, 99334¹, 99335¹, 99336¹, 99337¹, 99347¹, 99348¹, 99349¹, 99350¹, 99374¹, 99375¹, 99377¹, 99378¹, 99446⁰, 99447⁰, 99448⁰, 99449⁰, 99451⁰, 99452⁰, 99495⁰, 99496⁰, G0463¹, G0471¹, J0670¹, J2001¹

ICD-10 CrossRef

G44.1, J34.0, J34.1, J34.89, J34.9, J95.61, J95.62, J95.860, J95.861, L76.01, L76.02, L76.31, L76.32, M70.98, R09.81, R50.82, R51, S00.93XA, S01.20XA, S01.21XA, S01.22XA, S01.23XA, S01.24XA, S01.25XA, S02.2XXA, S02.2XXB, S09.8XXA, S09.90XA, S09.93XA, T81.33XA

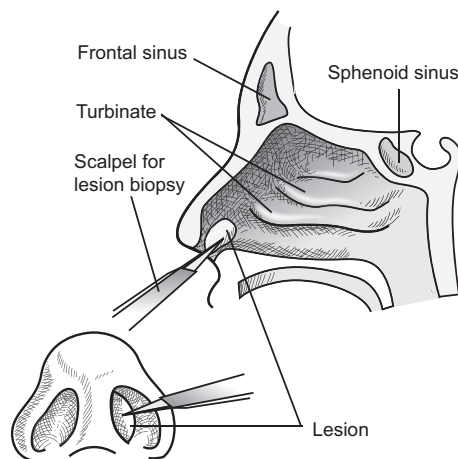
30100

Biopsy, intranasal

Clinical Responsibility

After the patient has been appropriately prepped and anesthetized, the provider inserts nasal forceps and removes a tissue sample from a suspicious or diseased intranasal area. He sends that sample, along with a sample of the patient's healthy intranasal tissue, to the pathologist for further evaluation and comparison study. He may apply a suture if necessary or leave the site open to heal on its own.

Illustration



30100

32160

Thoracotomy; with cardiac massage

Clinical Responsibility

When the patient is appropriately prepped and anesthetized, the provider creates a surgical opening or incision in the thoracic cavity to gain access to the organs, including the heart, lungs, esophagus, thoracic aorta, and anterior spine.

The provider may use one of several approaches to perform the thoracotomy.

The provider may perform a median sternotomy to reach the heart or other areas of the thoracic cavity. The provider makes an incision down through the middle of the chest and splits the sternum, or breastbone, down the middle by using special tools.

Posterolateral thoracotomy and anterolateral thoracotomy are other possible approaches. The provider performs a posterolateral incision at the sternum and goes across to the side until she reaches the back. For an anterolateral incision, the provider makes an incision starting at the sternum and goes across to the side just under the armpit. She then widens the opening with rib spreaders.

A clamshell thoracotomy gives almost complete exposure to the entire thoracic cavity. The provider usually starts as a standard left anterolateral thoracotomy, placed in the fifth intercostal space, just below the nipple. The provider then performs a right sided thoracotomy in the same interspace. She then splits the sternum and widens the opening with rib spreaders.

Once the provider gains access to the heart, she performs internal cardiac massage by using two hands to squeeze the heart using rhythmic compressions. The compressions maintain blood circulation during a cardiac or pulmonary arrest.

After performing the surgical procedure, the provider may place one or more chest drains with one end in the thoracic cavity and the other end exiting the body so the tube may be connected to a collection container. The chest tube re-expands the lungs if necessary and allows for drainage of air, blood, or fluid. If the sternum requires repair, the provider uses wires to bring the halves together. The provider uses stitches and closes the incision in layers.

Fee Schedule

Medicare Fees National Conversion Factor: 36.0896, Facility: \$828.98, Non Facility: \$828.98, OPPS Facility: \$472.77, OPPS Non Facility: \$472.77

RVU Facility Work RVU: 13.10, PE RVU: 6.94, Malpractice RVU: 2.93, Total RVU: 22.97

RVU Non-Facility Work RVU: 13.10, PE RVU: 6.94, Malpractice RVU: 2.93, Total RVU: 22.97

Indicators Preoperative: 10.00, Intraoperative: 76.00, Postoperative: 14.00, Total RVU: 100, Global Period: 090, Radiology Diagnostic Test: 99, Code Status: A, PC/TC Indicator: 0, Endoscopic Base Code: None, MUE: 1

Modifier Allowances 22, 47, 51, 52, 53, 54, 55, 56, 58, 59, 62, 63, 76, 77, 78, 79, 80, 81, 82, 99, AQ, AR, AS, CR, ET, GA, GC, GJ, GR, KX, PD, Q5, Q6, QJ, XE, XP, XS, XU

CCI Alerts (version 25.3)

0213T⁰, 0216T⁰, 0228T⁰, 0230T⁰, 11000¹, 11001¹, 11004¹, 11005¹, 11006¹, 11042¹, 11043¹, 11044¹, 11045¹, 11046¹, 11047¹, 12001¹, 12002¹, 12004¹, 12005¹, 12006¹, 12007¹, 12011¹, 12013¹, 12014¹, 12015¹, 12016¹, 12017¹, 12018¹, 12020¹, 12021¹, 12031¹, 12032¹, 12034¹, 12035¹, 12036¹, 12037¹, 12041¹, 12042¹, 12044¹, 12045¹, 12046¹, 12047¹, 12051¹, 12052¹, 12053¹, 12054¹, 12055¹, 12056¹, 12057¹, 13100¹, 13101¹, 13102¹, 13120¹, 13121¹, 13122¹, 13131¹, 13132¹, 13133¹, 13151¹, 13152¹, 13153¹, 20101¹, 31622¹, 31634¹, 31647¹, 32096¹, 32097¹, 32098¹, 32100¹, 32215⁰, 32220⁰, 32225⁰, 32551¹, 32556¹, 32557¹, 32601¹, 32607¹, 32608¹, 32609¹, 32654¹, 36000¹, 36400¹, 36405¹, 36406¹, 36410¹, 36420¹, 36425¹, 36430¹, 36440¹, 36591⁰, 36592⁰, 36600¹, 36640¹, 43752¹, 51701¹, 51702¹, 51703¹, 62320⁰, 62321⁰, 62322⁰, 62323⁰, 62324⁰, 62325⁰, 62326⁰, 62327⁰, 64400⁰, 64402⁰, 64405⁰, 64408⁰, 64410⁰, 64413⁰, 64415⁰, 64416⁰, 64417⁰, 64418⁰, 64420⁰, 64421⁰, 64425⁰, 64430⁰, 64435⁰, 64445⁰, 64446⁰, 64447⁰, 64448⁰, 64449⁰, 64450⁰, 64461⁰, 64462⁰, 64463⁰, 64479⁰, 64480⁰, 64483⁰, 64484⁰, 64486⁰, 64487⁰, 64488⁰, 64489⁰, 64490⁰, 64491⁰, 64492⁰, 64493⁰, 64494⁰, 64495⁰, 64505⁰, 64510⁰, 64517⁰, 64520⁰, 64530⁰, 69990⁰, 92012¹, 92014¹, 93000¹, 93005¹, 93010¹, 93040¹, 93041¹, 93042¹, 93318¹, 93355¹, 94002¹, 94200¹, 94250¹, 94680¹, 94681¹, 94690¹, 94770¹, 95812¹, 95813¹, 95816¹, 95819¹, 95822¹, 95829¹, 95955¹, 96360¹, 96361¹, 96365¹, 96366¹, 96367¹, 96368¹, 96372¹, 96374¹, 96375¹, 96376¹, 96377¹, 96523⁰, 97597¹, 97598¹, 97602¹, 99155⁰, 99156⁰, 99157⁰, 99211¹, 99212¹, 99213¹, 99214¹, 99215¹, 99217¹, 99218¹, 99219¹, 99220¹, 99221¹, 99222¹, 99223¹, 99231¹, 99232¹, 99233¹, 99234¹, 99235¹, 99236¹, 99238¹, 99239¹, 99241¹, 99242¹, 99243¹, 99244¹, 99245¹, 99251¹, 99252¹, 99253¹, 99254¹, 99255¹, 99291¹, 99292¹, 99304¹, 99305¹, 99306¹, 99307¹, 99308¹, 99309¹, 99310¹, 99315¹, 99316¹, 99334¹, 99335¹, 99336¹, 99337¹, 99347¹, 99348¹, 99349¹, 99350¹, 99374¹, 99375¹, 99377¹, 99378¹, 99446⁰, 99447⁰, 99448⁰, 99449⁰, 99451⁰, 99452⁰, 99495⁰, 99496⁰, G0463¹, G0471¹

ICD-10 CrossRef

I46.2-I46.9, I97.120, I97.121, I97.710, I97.711

32200

Pneumonostomy, with open drainage of abscess or cyst

Clinical Responsibility

When the patient is appropriately prepped and anesthetized, the provider uses a scalpel and incises to create an opening, or pneumostoma, through the chest wall, parietal membrane, and visceral membrane into a lung. The provider then cuts through the lungs until the abscess or cyst is visible. The provider then drains the fluid. She may leave a drainage tube in place to maintain drainage. She then dresses the wound with bulky gauze dressings to absorb the drainage. Use this code for drainage through an open procedure, not a percutaneous procedure.

Fee Schedule

Medicare Fees National Conversion Factor: 36.0896, Facility:

\$1,183.38, Non Facility: \$1,183.38, OPPS Facility: \$674.15, OPPS Non Facility: \$674.15

RVU Facility Work RVU: 18.68, PE RVU: 9.86, Malpractice RVU: 4.25, Total RVU: 32.79

RVU Non-Facility Work RVU: 18.68, PE RVU: 9.86, Malpractice RVU: 4.25, Total RVU: 32.79

Indicators Preoperative: 10.00, Intraoperative: 76.00, Postoperative: 14.00, Total RVU: 100, Global Period: 090, Radiology Diagnostic Test: 99, Code Status: A, PC/TC Indicator: 0, Endoscopic Base Code: None, MUE: 2

Modifier Allowances 22, 47, 51, 52, 53, 54, 55, 56, 58, 59, 62, 63, 76, 77, 78, 79, 80, 81, 82, 99, AQ, AR, AS, CR, ET, GA, GC, GJ, GR, KX, LT, PD, Q5, Q6, QJ, RT, XE, XP, XS, XU

CCI Alerts (version 25.3)

0213T⁰, 0216T⁰, 0228T⁰, 0230T⁰, 12001¹, 12002¹, 12004¹, 12005¹, 12006¹, 12007¹, 12011¹, 12013¹, 12014¹, 12015¹, 12016¹, 12017¹, 12018¹, 12020¹, 12021¹, 12031¹, 12032¹, 12034¹, 12035¹, 12036¹, 12037¹, 12041¹, 12042¹, 12044¹, 12045¹, 12046¹, 12047¹, 12051¹, 12052¹, 12053¹, 12054¹, 12055¹, 12056¹, 12057¹, 13100¹, 13101¹, 13102¹, 13120¹, 13121¹, 13122¹, 13131¹, 13132¹, 13133¹, 13151¹, 13152¹, 13153¹, 20101¹, 32035¹, 32036¹, 32551¹, 32556¹, 32557¹, 32601¹, 32607¹, 32608¹, 32609¹, 36000¹, 36400¹, 36405¹, 36406¹, 36410¹, 36420¹, 36425¹, 36430¹, 36440¹, 36591⁰, 36592⁰, 36600¹, 36640¹, 43752¹, 49405¹, 51701¹, 51702¹, 51703¹, 62320⁰, 62321⁰, 62322⁰, 62323⁰, 62324⁰, 62325⁰, 62326⁰, 62327⁰, 64400⁰, 64402⁰, 64405⁰, 64408⁰, 64410⁰, 64413⁰, 64415⁰, 64416⁰, 64417⁰, 64418⁰, 64420⁰, 64421⁰, 64425⁰, 64430⁰, 64435⁰, 64445⁰, 64446⁰, 64447⁰, 64448⁰, 64449⁰, 64450⁰, 64461⁰, 64462⁰, 64463⁰, 64479⁰, 64480⁰, 64483⁰, 64484⁰, 64486⁰, 64487⁰, 64488⁰, 64489⁰, 64490⁰, 64491⁰, 64492⁰, 64493⁰, 64494⁰, 64495⁰, 64505⁰, 64510⁰, 64517⁰, 64520⁰, 64530⁰, 69990⁰, 92012¹, 92014¹, 93000¹, 93005¹, 93010¹, 93040¹, 93041¹, 93042¹, 93318¹, 93355¹, 94002¹, 94200¹, 94250¹, 94680¹, 94681¹, 94690¹, 94770¹, 95812¹, 95813¹, 95816¹, 95819¹, 95822¹, 95829¹, 95955¹, 96360¹, 96361¹, 96365¹, 96366¹, 96367¹, 96368¹, 96372¹, 96374¹, 96375¹, 96376¹, 96377¹, 96523⁰, 99155⁰, 99156⁰, 99157⁰, 99211¹, 99212¹, 99213¹, 99214¹, 99215¹, 99217¹, 99218¹, 99219¹, 99220¹, 99221¹, 99222¹, 99223¹, 99231¹, 99232¹, 99233¹, 99234¹, 99235¹, 99236¹, 99238¹, 99239¹, 99241¹, 99242¹, 99243¹, 99244¹, 99245¹, 99251¹, 99252¹, 99253¹, 99254¹, 99255¹, 99291¹, 99292¹, 99304¹, 99305¹, 99306¹, 99307¹, 99308¹, 99309¹, 99310¹, 99315¹, 99316¹, 99334¹, 99335¹, 99336¹, 99337¹, 99347¹, 99348¹, 99349¹, 99350¹, 99374¹, 99375¹, 99377¹, 99378¹, 99446⁰, 99447⁰, 99448⁰, 99449⁰, 99451⁰, 99452⁰, 99495⁰, 99496⁰, G0463¹, G0471¹

ICD-10 CrossRef

J43.9, J85.0-J85.2, J86.9, J95.4, J95.5, J95.859, J95.862, J95.863, J95.88, J95.89, Q33.0

32215

Pleural scarific tion for repeat pneumothorax

Clinical Responsibility

When the patient is appropriately prepped and anesthetized, the provider accesses the lungs to perform surgical abrasion of the serous membrane that lines the thorax and walls of the pulmonary cavity and envelops the lungs. The provider grazes the surfaces of the lungs to cause the lung surface to stick to the chest wall. She takes the steps necessary for closure of the surgical wound. The abrasion of the pleura causes an inflammation, which then helps the lung surface to adhere to the chest wall better to relieve or prevent the trapped air.

Fee Schedule

Medicare Fees National Conversion Factor: 36.0896, Facility: \$830.78, Non Facility: \$830.78, OPPS Facility: \$470.97, OPPS Non Facility: \$470.97

RVU Facility Work RVU: 13.05, PE RVU: 7.04, Malpractice RVU: 2.93, Total RVU: 23.02

RVU Non-Facility Work RVU: 13.05, PE RVU: 7.04, Malpractice RVU: 2.93, Total RVU: 23.02

Indicators Preoperative: 10.00, Intraoperative: 76.00, Postoperative: 14.00, Total RVU: 100, Global Period: 090, Radiology Diagnostic Test: 99, Code Status: A, PC/TC Indicator: 0, Endoscopic Base Code: None, MUE: 1

Modifier Allowances 22, 47, 50, 51, 52, 53, 54, 55, 56, 58, 59, 62, 63, 76, 77, 78, 79, 80, 81, 82, 99, AQ, AR, AS, CR, ET, GA, GC, GJ, GR, KX, LT, PD, Q5, Q6, QJ, RT, XE, XP, XS, XU

CCI Alerts (version 25.3)

0213T⁰, 0216T⁰, 0228T⁰, 0230T⁰, 12001¹, 12002¹, 12004¹, 12005¹, 12006¹, 12007¹, 12011¹, 12013¹, 12014¹, 12015¹, 12016¹, 12017¹, 12018¹, 12020¹, 12021¹, 12031¹, 12032¹, 12034¹, 12035¹, 12036¹, 12037¹, 12041¹, 12042¹, 12044¹, 12045¹, 12046¹, 12047¹, 12051¹, 12052¹, 12053¹, 12054¹, 12055¹, 12056¹, 12057¹, 13100¹, 13101¹, 13102¹, 13120¹, 13121¹, 13122¹, 13131¹, 13132¹, 13133¹, 13151¹, 13152¹, 13153¹, 20101¹, 32551¹, 32556¹, 32557¹, 32560⁰, 32561⁰, 32562⁰, 32601¹, 32607¹, 32608¹, 32609¹, 36000¹, 36400¹, 36405¹, 36406¹, 36410¹, 36420¹, 36425¹, 36430¹, 36440¹, 36591⁰, 36592⁰, 36600¹, 36640¹, 43752¹, 49185¹, 51701¹, 51702¹, 51703¹, 62320⁰, 62321⁰, 62322⁰, 62323⁰, 62324⁰, 62325⁰, 62326⁰, 62327⁰, 64400⁰, 64402⁰, 64405⁰, 64408⁰, 64410⁰, 64413⁰, 64415⁰, 64416⁰, 64417⁰, 64418⁰, 64420⁰, 64421⁰, 64425⁰, 64430⁰, 64435⁰, 64445⁰, 64446⁰, 64447⁰, 64448⁰, 64449⁰, 64450⁰, 64461⁰, 64462⁰, 64463⁰, 64479⁰, 64480⁰, 64483⁰, 64484⁰, 64486⁰, 64487⁰, 64488⁰, 64489⁰, 64490⁰, 64491⁰, 64492⁰, 64493⁰, 64494⁰, 64495⁰, 64505⁰, 64510⁰, 64517⁰, 64520⁰, 64530⁰, 69990⁰, 92012¹, 92014¹, 93000¹, 93005¹, 93010¹, 93040¹, 93041¹, 93042¹, 93318¹, 93355¹, 94002¹, 94200¹, 94250¹, 94680¹, 94681¹, 94690¹, 94770¹, 95812¹, 95813¹, 95816¹, 95819¹, 95822¹, 95829¹, 95955¹, 96360¹, 96361¹, 96365¹, 96366¹, 96367¹, 96368¹, 96372¹, 96374¹, 96375¹, 96376¹, 96377¹, 96523⁰, 99155⁰, 99156⁰, 99157⁰, 99211¹, 99212¹, 99213¹, 99214¹, 99215¹, 99217¹, 99218¹, 99219¹, 99220¹, 99221¹, 99222¹, 99223¹, 99231¹, 99232¹, 99233¹, 99234¹, 99235¹, 99236¹, 99238¹, 99239¹, 99241¹, 99242¹, 99243¹, 99244¹, 99245¹, 99251¹, 99252¹, 99253¹, 99254¹, 99255¹, 99291¹, 99292¹, 99304¹, 99305¹, 99306¹, 99307¹, 99308¹, 99309¹, 99310¹, 99315¹, 99316¹, 99334¹, 99335¹, 99336¹, 99337¹, 99347¹, 99348¹, 99349¹, 99350¹, 99374¹, 99375¹, 99377¹, 99378¹, 99446⁰, 99447⁰, 99448⁰, 99449⁰, 99451⁰, 99452⁰, 99495⁰, 99496⁰, G0463¹, G0471¹

ICD-10 CrossRef Details

A01.01	Typhoid meningitis	A37.01	Whooping cough due to Bordetella pertussis with pneumonia
A01.03	Typhoid pneumonia	A37.10	Whooping cough due to Bordetella parapertussis without pneumonia
A01.09	Typhoid fever with other complications	A37.11	Whooping cough due to Bordetella parapertussis with pneumonia
A02.1	Salmonella sepsis	A37.80	Whooping cough due to other Bordetella species without pneumonia
A02.21	Salmonella meningitis	A37.81	Whooping cough due to other Bordetella species with pneumonia
A02.22	Salmonella pneumonia	A37.90	Whooping cough, unspecified species without pneumonia
A06.1	Chronic intestinal amebiasis	A37.91	Whooping cough, unspecified species with pneumonia
A06.5	Amebic lung abscess	A38.0	Scarlet fever with otitis media
A15.0	Tuberculosis of lung	A38.1	Scarlet fever with myocarditis
A15.4	Tuberculosis of intrathoracic lymph nodes	A38.8	Scarlet fever with other complications
A15.5	Tuberculosis of larynx, trachea and bronchus	A38.9	Scarlet fever, uncomplicated
A15.6	Tuberculous pleurisy	A39.0	Meningococcal meningitis
A15.7	Primary respiratory tuberculosis	A39.1	Waterhouse-Friderichsen syndrome
A15.8	Other respiratory tuberculosis	A39.3	Chronic meningococemia
A15.9	Respiratory tuberculosis unspecified	A39.50	Meningococcal carditis, unspecified
A17.0	Tuberculous meningitis	A39.51	Meningococcal endocarditis
A17.1	Meningeal tuberculoma	A39.52	Meningococcal myocarditis
A17.81	Tuberculoma of brain and spinal cord	A39.53	Meningococcal pericarditis
A17.82	Tuberculous meningoencephalitis	A40.0	Sepsis due to streptococcus, group A
A17.83	Tuberculous neuritis	A40.1	Sepsis due to streptococcus, group B
A17.89	Other tuberculosis of nervous system	A40.3	Sepsis due to Streptococcus pneumoniae
A17.9	Tuberculosis of nervous system, unspecified	A40.8	Other streptococcal sepsis
A18.81	Tuberculosis of thyroid gland	A40.9	Streptococcal sepsis, unspecified
A18.84	Tuberculosis of heart	A41.01	Sepsis due to Methicillin susceptible Staphylococcus aureus
A18.89	Tuberculosis of other sites	A41.02	Sepsis due to Methicillin resistant Staphylococcus aureus
A19.2	Acute miliary tuberculosis, unspecified	A41.1	Sepsis due to other specified staphylococcus
A19.8	Other miliary tuberculosis	A41.2	Sepsis due to unspecified staphylococcus
A19.9	Miliary tuberculosis, unspecified	A41.3	Sepsis due to Hemophilus influenza
A20.0	Bubonic plague	A41.4	Sepsis due to anaerobes
A20.2	Pneumonic plague	A41.50	Gram-negative sepsis, unspecified
A20.3	Plague meningitis	A41.51	Sepsis due to Escherichia coli [E. coli]
A20.7	Septicemic plague	A41.52	Sepsis due to Pseudomonas
A21.2	Pulmonary tularemia	A41.53	Sepsis due to Serratia
A22.1	Pulmonary anthrax	A41.59	Other Gram-negative sepsis
A22.7	Anthrax sepsis	A41.81	Sepsis due to Enterococcus
A23.0	Brucellosis due to Brucella melitensis	A41.89	Other specified sepsis
A23.1	Brucellosis due to Brucella abortus	A41.9	Sepsis, unspecified organism
A23.2	Brucellosis due to Brucella suis	A42.0	Pulmonary actinomycosis
A23.3	Brucellosis due to Brucella canis	A42.7	Actinomycotic sepsis
A24.2	Subacute and chronic melioidosis	A42.81	Actinomycotic meningitis
A26.7	Erysipelothrix sepsis	A42.82	Actinomycotic encephalitis
A27.81	Aseptic meningitis in leptospirosis	A42.89	Other forms of actinomycosis
A28.0	Pasteurellosis	A43.0	Pulmonary nocardiosis
A28.8	Other specified zoonotic bacterial diseases, not elsewhere classified	A43.8	Other forms of nocardiosis
A28.9	Zoonotic bacterial disease, unspecified	A48.1	Legionnaires' disease
A30.0	Indeterminate leprosy	A48.2	Nonpneumonic Legionnaires' disease [Pontiac fever]
A31.0	Pulmonary mycobacterial infection	A49.01	Methicillin susceptible Staphylococcus aureus infection, unspecified site
A32.11	Listerial meningitis	A49.02	Methicillin resistant Staphylococcus aureus infection, unspecified site
A32.12	Listerial meningoencephalitis	A49.2	Hemophilus influenzae infection, unspecified site
A32.7	Listerial sepsis	A50.04	Early congenital syphilitic pneumonia
A33	Tetanus neonatorum	A50.41	Late congenital syphilitic meningitis
A36.0	Pharyngeal diphtheria	A51.41	Secondary syphilitic meningitis
A36.1	Nasopharyngeal diphtheria	A52.00	Cardiovascular syphilis, unspecified
A36.2	Laryngeal diphtheria	A52.01	Syphilitic aneurysm of aorta
A36.3	Cutaneous diphtheria	A52.02	Syphilitic aortitis
A36.81	Diphtheritic cardiomyopathy	A52.03	Syphilitic endocarditis
A36.82	Diphtheritic radiculomyelitis	A52.04	Syphilitic cerebral arteritis
A36.83	Diphtheritic polyneuritis	A52.05	Other cerebrovascular syphilis
A36.84	Diphtheritic tubulo-interstitial nephropathy	A52.06	Other syphilitic heart involvement
A36.85	Diphtheritic cystitis		
A36.86	Diphtheritic conjunctivitis		
A36.89	Other diphtheritic complications		
A36.9	Diphtheria, unspecified		
A37.00	Whooping cough due to Bordetella pertussis without pneumonia		

A52.09	Other cardiovascular syphilis	B15.9	Hepatitis A without hepatic coma
A52.13	Late syphilitic meningitis	B16.0	Acute hepatitis B with delta-agent with hepatic coma
A52.72	Syphilis of lung and bronchus	B16.1	Acute hepatitis B with delta-agent without hepatic coma
A52.73	Symptomatic late syphilis of other respiratory organs	B16.2	Acute hepatitis B without delta-agent with hepatic coma
A54.81	Gonococcal meningitis	B16.9	Acute hepatitis B without delta-agent and without hepatic coma
A54.83	Gonococcal heart infection	B17.0	Acute delta-(super) infection of hepatitis B carrier
A54.84	Gonococcal pneumonia	B17.10	Acute hepatitis C without hepatic coma
A54.86	Gonococcal sepsis	B17.11	Acute hepatitis C with hepatic coma
A69.21	Meningitis due to Lyme disease	B17.9	Acute viral hepatitis, unspécifie
A80.0	Acute paralytic poliomyelitis, vaccine-associated	B18.0	Chronic viral hepatitis B with delta-agent
A80.1	Acute paralytic poliomyelitis, wild virus, imported	B18.1	Chronic viral hepatitis B without delta-agent
A80.2	Acute paralytic poliomyelitis, wild virus, indigenous	B18.2	Chronic viral hepatitis C
A80.30	Acute paralytic poliomyelitis, unspécifie	B18.8	Other chronic viral hepatitis
A80.39	Other acute paralytic poliomyelitis	B18.9	Chronic viral hepatitis, unspécifie
A80.4	Acute nonparalytic poliomyelitis	B19.0	Unspecified vi al hepatitis with hepatic coma
A80.9	Acute poliomyelitis, unspécifie	B19.10	Unspecified vi al hepatitis B without hepatic coma
A81.00	Creutzfeldt-Jakob disease, unspécifie	B19.11	Unspecified vi al hepatitis B with hepatic coma
A81.01	Variant Creutzfeldt-Jakob disease	B19.20	Unspecified vi al hepatitis C without hepatic coma
A81.09	Other Creutzfeldt-Jakob disease	B19.21	Unspecified vi al hepatitis C with hepatic coma
A81.1	Subacute sclerosing panencephalitis	B19.9	Unspecified vi al hepatitis without hepatic coma
A81.2	Progressive multifocal leukoencephalopathy	B20	Human immunodeficiency virus [HIV] disease
A81.81	Kuru	B25.0	Cytomegaloviral pneumonitis
A81.82	Gerstmann-Straussler-Scheinker syndrome	B25.2	Cytomegaloviral pancreatitis
A81.83	Fatal familial insomnia	B26.1	Mumps meningitis
A81.89	Other atypical virus infections of central nervous system	B26.89	Other mumps complications
A81.9	Atypical virus infection of central nervous system, unspécifie	B26.9	Mumps without complication
A87.0	Enteroviral meningitis	B27.00	Gammaherpesviral mononucleosis without complication
A87.1	Adenoviral meningitis	B27.02	Gammaherpesviral mononucleosis with meningitis
A87.2	Lymphocytic choriomeningitis	B27.09	Gammaherpesviral mononucleosis with other complications
A87.8	Other viral meningitis	B27.10	Cytomegaloviral mononucleosis without complications
A87.9	Viral meningitis, unspécifie	B27.12	Cytomegaloviral mononucleosis with meningitis
A92.39	West Nile virus infection with other complications	B27.19	Cytomegaloviral mononucleosis with other complication
B00.3	Herpesviral meningitis	B27.80	Other infectious mononucleosis without complication
B00.82	Herpes simplex myelitis	B27.82	Other infectious mononucleosis with meningitis
B01.0	Varicella meningitis	B27.89	Other infectious mononucleosis with other complication
B01.11	Varicella encephalitis and encephalomyelitis	B27.90	Infectious mononucleosis, unspecified without complication
B01.12	Varicella myelitis	B27.92	Infectious mononucleosis, unspecified with meningitis
B01.2	Varicella pneumonia	B27.99	Infectious mononucleosis, unspecified with other complication
B01.81	Varicella keratitis	B33.20	Viral carditis, unspécifie
B01.89	Other varicella complications	B33.21	Viral endocarditis
B01.9	Varicella without complication	B33.22	Viral myocarditis
B02.0	Zoster encephalitis	B33.23	Viral pericarditis
B02.1	Zoster meningitis	B33.4	Hantavirus (cardio)-pulmonary syndrome [HPS] [HCPS]
B02.29	Other postherpetic nervous system involvement	B37.1	Pulmonary candidiasis
B02.8	Zoster with other complications	B37.5	Candidal meningitis
B02.9	Zoster without complications	B37.6	Candidal endocarditis
B05.0	Measles complicated by encephalitis	B37.7	Candidal sepsis
B05.1	Measles complicated by meningitis	B38.0	Acute pulmonary coccidioidomycosis
B05.2	Measles complicated by pneumonia	B38.1	Chronic pulmonary coccidioidomycosis
B05.3	Measles complicated by otitis media	B38.2	Pulmonary coccidioidomycosis, unspécifie
B05.4	Measles with intestinal complications	B38.3	Cutaneous coccidioidomycosis
B05.81	Measles keratitis and keratoconjunctivitis	B38.4	Coccidioidomycosis meningitis
B05.89	Other measles complications	B39.0	Acute pulmonary histoplasmosis capsulati
B05.9	Measles without complication	B39.1	Chronic pulmonary histoplasmosis capsulati
B06.00	Rubella with neurological complication, unspécifie	B39.2	Pulmonary histoplasmosis capsulati, unspécifie
B06.01	Rubella encephalitis	B39.5	Histoplasmosis duboisii
B06.02	Rubella meningitis	B40.0	Acute pulmonary blastomycosis
B06.09	Other neurological complications of rubella	B40.1	Chronic pulmonary blastomycosis
B06.81	Rubella pneumonia	B40.2	Pulmonary blastomycosis, unspécifie
B06.82	Rubella arthritis	B40.3	Cutaneous blastomycosis
B06.89	Other rubella complications	B40.7	Disseminated blastomycosis
B06.9	Rubella without complication	B40.81	Blastomycotic meningoencephalitis
B08.21	Exanthema subitum [sixth disease] due to human herpesvirus 6	B40.89	Other forms of blastomycosis
B08.22	Exanthema subitum [sixth disease] due to human herpesvirus 7	B40.9	Blastomycosis, unspécifie
B10.01	Human herpesvirus 6 encephalitis	B41.0	Pulmonary paracoccidioidomycosis
B10.09	Other human herpesvirus encephalitis	B41.7	Disseminated paracoccidioidomycosis
B10.81	Human herpesvirus 6 infection	B41.8	Other forms of paracoccidioidomycosis
B10.82	Human herpesvirus 7 infection	B41.9	Paracoccidioidomycosis, unspécifie
B10.89	Other human herpesvirus infection	B42.0	Pulmonary sporotrichosis
B15.0	Hepatitis A with hepatic coma	B42.1	Lymphocutaneous sporotrichosis

Modifier Descriptors

Modifier	Description
CPT® Modifiers	
22	Increased Procedural Services
23	Unusual Anesthesia
24	Unrelated Evaluation and Management Service by the Same Physician or Other Qualified Health Care Professional During a Postoperative Period
25	Significant, Separately Identifiable Evaluation and Management Service by the Same Physician or Other Qualified Health Care Professional on the Same Day of the Procedure or Other Service
26	Professional Component
27	Multiple Outpatient Hospital E/M Encounters on the Same Date
32	Mandated Services
33	Preventive Services
47	Anesthesia by Surgeon
50	Bilateral Procedure
51	Multiple Procedures
52	Reduced Services
53	Discontinued Procedure
54	Surgical Care Only
55	Postoperative Management Only
56	Preoperative Management Only
57	Decision for Surgery
58	Staged or Related Procedure or Service by the Same Physician or Other Qualified Health Care Professional During the Postoperative Period
59	Distinct Procedural Service
62	Two Surgeons
63	Procedure Performed on Infants less than 4 kg
66	Surgical Team
73	Discontinued Out-Patient Hospital/Ambulatory Surgery Center (ASC) Procedure Prior to the Administration of Anesthesia
74	Discontinued Out-Patient Hospital/Ambulatory Surgery Center (ASC) Procedure After Administration of Anesthesia
76	Repeat Procedure or Service by Same Physician or Other Qualified Health Care Professional
77	Repeat Procedure by Another Physician or Other Qualified Health Care Professional
78	Unplanned Return to the Operating/Procedure Room by the Same Physician or Other Qualified Health Care Professional Following Initial Procedure for a Related Procedure During the Postoperative Period

Modifier	Description
79	Unrelated Procedure or Service by the Same Physician or Other Qualified Health Care Professional During the Postoperative Period
80	Assistant Surgeon
81	Minimum Assistant Surgeon
82	Assistant Surgeon (when qualified resident surgeon not available)
90	Reference (Outside) Laboratory
91	Repeat Clinical Diagnostic Laboratory Test
92	Alternative Laboratory Platform Testing
95	Synchronous Telemedicine Service Rendered Via a Real-Time Interactive Audio and Video Telecommunications System
96	Habilitative Services
97	Rehabilitative Services
99	Multiple Modifier
Category II Modifiers	
1P	Performance Measure Exclusion Modifier due to Medical Reasons
2P	Performance Measure Exclusion Modifier due to Patient Reasons
3P	Performance Measure Exclusion Modifier due to System Reasons
8P	Performance Measure Reporting Modifier - Action Not Performed, Reason Not Otherwise Specified
HCPCS Modifiers	
A1	Dressing for one wound
A2	Dressing for two wounds
A3	Dressing for three wounds
A4	Dressing for four wounds
A5	Dressing for five wounds
A6	Dressing for six wounds
A7	Dressing for seven wounds
A8	Dressing for eight wounds
A9	Dressing for nine or more wounds
AA	Anesthesia services performed personally by anesthesiologist
AD	Medical supervision by a physician: more than four concurrent anesthesia procedures
AE	Registered dietitian
AF	Specialty physician
AG	Primary physician
AH	Clinical psychologist
AI	Principal physician of record

Modifier	Description
AJ	Clinical social worker
AK	Non participating physician
AM	Physician, team member service
AO	Alternate payment method declined by provider of service
AP	Determination of refractive state was not performed in the course of diagnostic ophthalmological examination
AQ	Physician providing a service in an unlisted health professional shortage area (HPSA)
AR	Physician provider services in a physician scarcity area
AS	Physician assistant, nurse practitioner, or clinical nurse specialist services for assistant at surgery
AT	Acute treatment (this modifier should be used when reporting service 98940, 98941, 98942)
AU	Item furnished in conjunction with a urological, ostomy, or tracheostomy supply
AV	Item furnished in conjunction with a prosthetic device, prosthetic or orthotic
AW	Item furnished in conjunction with a surgical dressing
AX	Item furnished in conjunction with dialysis services
AY	Item or service furnished to an ESRD patient that is not for the treatment of ESRD
AZ	Physician providing a service in a dental health professional shortage area for the purpose of an electronic health record incentive payment
BA	Item furnished in conjunction with parenteral enteral nutrition (PEN) services
BL	Special acquisition of blood and blood products
BO	Orally administered nutrition, not by feeding tube
BP	The beneficiary has been informed of the purchase and rental options and has elected to purchase the item
BR	The beneficiary has been informed of the purchase and rental options and has elected to rent the item
BU	The beneficiary has been informed of the purchase and rental options and after 30 days has not informed the supplier of his/her decision
CA	Procedure payable only in the inpatient setting when performed emergently on an outpatient who expires prior to admission
CB	Service ordered by a renal dialysis facility (RDF) physician as part of the ESRD beneficiary's dialysis benefit, is not part of the composite rate, and is separately reimbursable
CC	Procedure code change (use 'CC' when the procedure code submitted was changed either for administrative reasons or because an incorrect code was filed)
CD	AMCC test has been ordered by an ESRD facility or MCP physician that is part of the composite rate and is not separately billable

Modifier	Description
CE	AMCC test has been ordered by an ESRD facility or MCP physician that is a composite rate test but is beyond the normal frequency covered under the rate and is separately reimbursable based on medical necessity
CF	AMCC test has been ordered by an ESRD facility or MCP physician that is not part of the composite rate and is separately billable
CG	Policy criteria applied
CH	0 percent impaired, limited or restricted
CI	At least 1 percent but less than 20 percent impaired, limited or restricted
CJ	At least 20 percent but less than 40 percent impaired, limited or restricted
CK	At least 40 percent but less than 60 percent impaired, limited or restricted
CL	At least 60 percent but less than 80 percent impaired, limited or restricted
CM	At least 80 percent but less than 100 percent impaired, limited or restricted
CN	100 percent impaired, limited or restricted
CO	Outpatient occupational therapy services furnished in whole or in part by an occupational therapy assistant
CQ	Outpatient physical therapy services furnished in whole or in part by a physical therapist assistant
CR	Catastrophe/disaster related
CS	Item or service related, in whole or in part, to an illness, injury, or condition that was caused by or exacerbated by the effects, direct or indirect, of the 2010 oil spill in the Gulf of Mexico, including but not limited to subsequent clean-up activities
CT	Computed tomography services furnished using equipment that does not meet each of the attributes of the National Electrical Manufacturers Association (NEMA) XR-29-2013 standard
DA	Oral health assessment by a licensed health professional other than a dentist
E1	Upper left, eyelid
E2	Lower left, eyelid
E3	Upper right, eyelid
E4	Lower right, eyelid
EA	Erythropoietic stimulating agent (ESA) administered to treat anemia due to anti-cancer chemotherapy
EB	Erythropoietic stimulating agent (ESA) administered to treat anemia due to anti-cancer radiotherapy
EC	Erythropoietic stimulating agent (ESA) administered to treat anemia not due to anti-cancer radiotherapy or anti-cancer chemotherapy
ED	Hematocrit level has exceeded 39% (or hemoglobin level has exceeded 13.0 G/dl) for 3 or more consecutive billing cycles immediately prior to and including the current cycle

Terminology

Terminology	Explanation
23 valent	A vaccine that contains 23 of the most common types of pneumococcal bacteria to help prevent infection.
Ablation	Surgical destruction of abnormal tissue or organ growth.
Abscess	A localized collection of pus that collects in a cavity, usually in response to infection.
Accessory nasal sinuses	Paranasal sinuses present as a hollow cavity within the skull but open into the nasal cavity; these are lined with a mucosal membrane.
Acute	A medical condition or injury of sudden onset, sometimes severe in nature, and typically last a short period of time; opposite of chronic.
Acute care	A level of service where a patient is actively treated for a brief but severe episode of illness, or injury.
Acute respiratory distress	Sudden onset of difficulty breathing or periods of apnea, or failure to breathe.
Adhesions	Band of fibrous tissue that binds two organs or tissues together.
Advance directive	A document which enables a person to make provision for his health care decisions in case if in the future, he becomes unable to make those decisions; include documents such as a living will and a medical power of attorney.
Aerosol generator	A device that produces aerosol suspensions, as for inhalation therapy.
Airway resistance	Resistance, or opposition, to flow caused by friction forces in the airways of the respiratory tract.
Albuterol	An inhaled bronchodilator.
Algorithm	A specific set of step-by-step calculations using defined inputs to each step to produce a useful output.
Allograft	A tissue graft from a donor.
Alveoli	Air sacs that are a continuation of bronchioles and are responsible for exchange of gases.
Amplification	Making more copies of desired gene for study by processes such as polymerase chain reaction, called PCR, or transcription of DNA to RNA and reverse transcription from RNA to make an additional copy of the DNA.
Anastomosis	Connection between two structures, anatomical or surgically created, such as between two blood vessels or the colon after resection of a part; types of anastomoses include end to side and side to side.
Aneurysm	Weakness in the wall of a blood vessel or wall of a ventricle of the heart, typically the left ventricle, causing the wall to balloon out; sometimes requiring surgical excision or repair to prevent rupture.
Anterior	Closer to the front part of the body or a structure.
Anterior nasal bone	Two small bones that form a bridge of bones in the front.
Anterolateral	Situated in front and to one side.
Anterolateral thoracotomy	Surgical incision through the anterior, or front, chest wall to the side.
Anteroposterior view	The X-ray projection travels from front to back, abbreviated as AP.
Antibody	A protein produced by the immune system in response to an antigen; lab tests may utilize reactions between antibodies and antigens to identify a substance in a patient specimen.
Anticoagulant	A drug that prevents clot formation within the blood vessels and dissolves any blood clot formed previously.
Antigen	A substance that can stimulate the immune system to produce antibodies; lab tests may utilize reactions between antibodies and antigens to identify a substance in a patient specimen.
Antrochoanal polyp	A solitary polyp that arises in the maxillary sinus and enlarges the sinus ostium, which is the natural opening into the sinus.
Antrostomy	A surgical break into the antrum, that refers to a cavity.
Antrum	A natural cavity that may have a specific meaning in reference to organs or sites.
Aorta	Largest artery originating from heart, which supplies oxygenated blood to the body.
Apical tumor	Cancerous growth at the apex of a pyramid or rounded structure or organ, such as the heart or lung.
Arterial access	Situated or occurring within an artery.
Aryepiglottic fold	The entrance of the larynx, or the voice box, which is narrow in the front and wide behind.
Arytenoid	Cartilage present at the back of the voice box, responsible for production of specific voice sounds.
Arytenoidectomy	Surgical procedure in which the provider excises the arytenoids cartilage; it is generally performed to improve air flow through the airway.

Terminology	Explanation
Arytenoidopexy	Fixation or suspension of the arytenoid cartilage.
Arytenoids	A pair of small cartilage structures present at the back of the vocal cords to which the vocal cords are attached; responsible for the production of sound.
Aspirate	Draw fluid out by suction.
Aspiration	Removal of fluid, gas, or other material through a tube attached to a suction device, often combined with irrigation, the instillation of fluid to clean a wound or to wash out a cavity such as the abdomen or stomach.
Asthma	A disease that causes the airways of the lungs to swell and narrow, leading to wheezing, shortness of breath, chest tightness, and coughing.
Atretic plate	A plate at the end of the nasal septum that is continuous with the choanal opening, an opening between the nasal cavity and the nasopharynx.
Atrial fibrillation	A heart rhythm disorder where the atrial appendage, a small pouch in the heart, does not squeeze rhythmically with the left atrium, causing blood inside the pouch to become stagnant and prone to produce blood clots.
Attenuated vaccine	Vaccine made from live micro organisms that are cultured under advanced conditions retaining their ability of immunity.
Autograft	Placement of a tissue or an organ to a new position in the same individual; also called auto transplant.
Autologous	Surgical placement of any tissue from one part of the body to another location in the same patient, also applies to reinfusion of blood or its components to the same patient from which the blood was removed.
Bacteria	Single celled microorganisms visible only with a microscope, some of which cause infection.
Benign neoplasm	An abnormal mass of cells that lacks the ability to penetrate the neighboring tissues.
Bilateral	On two sides; opposite of unilateral.
Bilateral sequential	Occurring on one side and then subsequently on the other side.
Bilobectomy	Surgical removal of two lobes, as of the lung.
Biopsy	A procedure in which the provider excises a sample of the patient's diseased tissues; the sample is sent to a laboratory for detection of any disease condition.
Bipolar cautery	The provider passes high frequency electrical current from active to passive electrodes in tissues to control bleeding.
Bronchi	Main passageway of air into lungs.
Bronchial stent	Tube-shaped structure placed in the main airways to the lungs to treat a variety of airway diseases.
Bronchial Thermoplasty	A technique to ablate airway muscles using radiofrequency to reduce the amount of smooth muscles in the airway; may help reduce a patient's asthma attacks.
Bronchial valve	A synthetic device placed inside the lungs to control airflow; used to treat air leakages due to lung disease such as emphysema, atelectasis, etc.
Bronchiole	Smaller subdivisions of bronchi that supply air to and from the lungs.
Bronchioles	Tiny branches of the airways into which the bronchus divides.
Bronchitis	Inflammation of the main passages of the lungs.
Broncho-cutaneous	The joining of the bronchus, pleural space, and subcutaneous tissue.
Bronchodilator	A drug that relaxes and widens the air passages of the lungs to increase airflow to the lungs.
Broncho-pleural	The joining of a bronchial tube and the pleura.
Bronchopleural fistula (BPF)	A condition involving an abnormal passageway between a bronchus and the pleural cavity (space between the membranes surrounding the lungs); major causes of this condition are surgery on the lung and bronchus, chemotherapy or radiotherapy for cancers, and tuberculosis.
Bronchoscopy	A technique to visualize the inside of the airways, using a viewing instrument called a bronchoscope, for diagnostic and therapeutic purposes.
Bronchus	An anatomic pathway that conveys air to and from the lungs.
Brush Biopsy	A provider uses a small brush to remove cells from airways; a trained provider looks at these cells under a microscope for any disease.
Bullae	A bubble-like pocket of fluid or air.
Bullous emphysema	Pathological accumulation of air or fluid in lung's air sacs.
Burr	A surgical instrument used to drill through the bone.
Caldwell-Luc incision	Incision in the front wall of the maxillary sinus through the upper gums.
Canine fossa	A large and deep depression on the external surface of the maxilla, which is the upper jaw.
Cannula	A thin tube set in the body, typically either to insert an implant or to drain fluid.

Code Index

Codes	Page No.	Codes	Page No.	Codes	Page No.	Codes	Page No.	Codes	Page No.
0424T	486	30120	22	31002	55	31296	90	31554	123
0425T	487	30124	22	31020	56	31297	91	31560	124
0426T	487	30125	23	31030	57	31299	91	31561	125
0427T	488	30130	24	31032	58	31300	92	31570	125
0428T	489	30140	25	31040	59	31360	93	31571	126
0429T	490	30150	26	31050	60	31365	93	31572	127
0430T	490	30160	27	31051	61	31367	94	31573	128
0431T	491	30200	27	31070	62	31368	95	31574	128
0432T	492	30210	28	31075	63	31370	96	31575	129
0433T	492	30220	29	31080	64	31375	97	31576	130
0434T	493	30300	29	31081	65	31380	98	31577	131
0435T	494	30310	30	31084	66	31382	98	31578	132
0436T	494	30320	31	31085	67	31390	99	31579	133
+0466T	495	30400	32	31086	67	31395	100	31580	134
0467T	495	30410	33	31087	68	31400	101	31584	134
0468T	496	30420	33	31090	69	31420	102	31587	135
0489T	497	30430	34	31200	70	31500	102	31590	136
0490T	498	30435	35	31201	71	31502	103	31591	136
0494T	498	30450	35	31205	71	31505	104	31592	137
0495T	499	30460	36	31225	72	31510	105	31599	138
+0496T	499	30462	37	31230	73	31511	106	31600	138
+10004	5	30465	38	31231	74	31512	107	31601	139
10005	5	30520	39	31233	75	31513	107	31603	140
+10006	6	30540	40	31235	75	31515	108	31605	141
10007	7	30545	41	31237	76	31520	109	31610	142
+10008	8	30560	42	31238	77	31525	110	31611	143
10009	9	30580	43	31239	78	31526	111	31612	143
+10010	10	30600	44	31240	78	31527	112	31613	144
10011	11	30620	44	31254	79	31528	113	31614	145
+10012	12	30630	45	31255	80	31529	114	31615	145
10021	13	30801	46	31256	81	31530	114	31622	146
21601	15	30802	47	31267	82	31531	115	31623	147
21602	15	30901	48	31276	82	31535	116	31624	148
21603	16	30903	49	31287	83	31536	116	31625	149
30000	17	30905	49	31288	84	31540	117	31626	149
30020	17	30906	50	31290	85	31541	118	+31627	150
30100	18	30915	51	31291	86	31545	119	31628	151
30110	19	30920	52	31292	87	31546	120	31629	152
30115	20	30930	53	31293	87	31551	120	31630	153
30117	20	30999	54	31294	88	31552	121	31631	153
30118	21	31000	54	31295	89	31553	122	+31632	154



Thank you for making a purchase with a purpose.



AAPC has partnered with Susan G. Komen® in the fight to end breast cancer. With the purchase of this book, you are making a difference in this fight. For every book sold*, AAPC will make a donation to help fund breast cancer research, screenings, treatment and support programs and education.

For more information, visit www.komen.org.

We're coding for a cure. And we're proud to have you join us.

*From April 1, 2020 to March 31, 2021, AAPC will donate to Susan G. Komen® \$1.00 for each AAPC medical coding book sold, with a guaranteed minimum donation of \$100,000



2233 South Presidents Dr., Suites F-C
Salt Lake City, Utah 84120. Fax 801-236-2258
www.aapc.com | 800-626-2633

CSG: Pulmonology 2021



9 781635 277692

ISBN: 978-1-635277-692

eBook ISBN: 978-1-635277-913