



Your essential illustrated coding guide for vascular surgery, including CPT®, HCPCS Level II, tips, CPT® to ICD-10-CM Cross References, NCCI edits, and RVU information

CODERS' SPECIALTY GUIDE

Vascular Surgery



2024

Contents

Introduction	3
General	5
Integumentary System	15
Cardiovascular System	16
Digestive System	439
Operating Microscope	440
Radiology	441
Pathology and Laboratory	511
Medicine	512
Evaluation and Management	616
Category III Codes	704
HCPCS Level II Codes	
• Outpatient PPS	728
• Procedures/Professional Services	733
• Durable Medical Equipment (DME)	746
• Medical Services	747
• Temporary Codes	752
• Temporary National Codes (Non-Medicare)	753
ICD-10 CrossRef Details	755
Modifier Descriptors	911
Terminology	921
Code Index	941

+10004

Fine needle aspiration biopsy, without imaging guidance; each additional lesion (List separately in addition to code for primary procedure)

Clinical Responsibility

With the patient properly prepared and anesthetized (typically with local anesthesia) and following FNA of an initial lesion, the provider inserts a needle, such as an 18- to 25-gauge needle with an attached syringe, into an additional suspicious lesion or area of tissue and withdraws cells, tissue, or fluid for laboratory analysis. The provider may make several passes to obtain an adequate specimen. The provider then sends the aspirate to the pathology lab for analysis.

Coding Tips

For FNA of an initial lesion using imaging guidance, see 10005 (ultrasound), 10007 (fluoroscopy), 10009 (CT), and 10011 (MRI) and +10006, +10008, +10010 and +10012 for each additional lesion respectively.

Fee Schedule

Medicare Fees National Conversion Factor: 34.8931, Facility: \$43.62, Non Facility: \$52.34, OPPI Facility: \$27.91, OPPI Non Facility: \$27.91

RVU Facility Work RVU: 0.80, PE RVU: 0.34, Malpractice RVU: 0.11, Total RVU: 1.25

RVU Non-Facility Work RVU: 0.80, PE RVU: 0.59, Malpractice RVU: 0.11, Total RVU: 1.50

Indicators Preoperative: 0.00, Intraoperative: 0.00, Postoperative: 0.00, Total RVU: 0, Global Period: ZZZ, Radiology Diagnostic Test: 99, Code Status: A, PC/TC Indicator: 0, Endoscopic Base Code: None, MUE: 3

Modifier Allowances 22, 52, 53, 58, 59, 76, 77, 78, 79, 80, 81, 82, 99, AQ, AR, AS, GA, GC, GZ, LT, PD, Q6, QJ, RT, SC, XE, XP, XS, XU

CCI Alerts (version 27.3)

0213T¹, 0216T¹, 10012¹, 10035¹, 19281¹, 19283¹, 19285¹, 19287¹, 36000¹, 36410¹, 36591⁰, 36592⁰, 61650¹, 62324¹, 62325¹, 62326¹, 62327¹, 64415¹, 64416¹, 64417¹, 64450¹, 64454¹, 64486¹, 64487¹, 64488¹, 64489¹, 64490¹, 64493¹, 76000¹, 76380¹, 76942¹, 76998¹, 77001¹, 77002¹, 77012¹, 77021¹, 96360¹, 96365¹, 96372¹, 96374¹, 96375¹, 96376¹, 96377¹, 96523⁰, J2001¹

ICD-10 CrossRef

C00.3, C01, C02.9, C04.1, C06.9, C07, C08.0, C12, C13.9, C15.9, C22.0-C22.4, C22.7, C22.8, C32.1, C32.8, C34.30-C34.32, C43.20-C43.22, C43.30-C43.39, C43.51-C43.59, C43.60-C43.62, C46.0, C50.011-C50.019, C50.111-C50.119, C50.211-C50.219, C50.411-C50.419, C50.811-C50.819, C50.911-C50.919, C51.9, C76.0, C76.1, C77.0, C77.3, C79.2, C79.81, C79.89, C79.9, C82.50, C82.51, C82.55, C82.59, C83.31-C83.35, C84.90, C84.91, C84.95, C84.99, C84.A0, C84.A1, C84.A5, C84.A9, C84.Z0, C84.Z1, C84.Z5, C84.Z9, C85.10, C85.11, C85.15, C85.19, C85.20, C85.21, C85.25, C85.29, C85.80, C85.81, C85.85, C85.89, C85.90, C85.91, C85.95,

Modifier: 0 = not allowed, 1 = allowed

C85.99, C86.0, C86.4, C88.8, C94.40-C94.42, C94.6, D03.20-D03.22, D03.30, D03.39, D03.51-D03.59, D03.60-D03.62, D05.00-D05.02, D05.10-D05.12, D05.80-D05.82, D05.90-D05.92, D11.0-D11.9, D17.0, D17.1, D17.20-D17.24, D17.30, D17.39, D17.72, D17.79, D17.9, D19.7, D21.0, D22.5, D22.70-D22.72, D23.5, D23.70-D23.72, D36.0, D36.7, D37.030-D37.039, D44.0-D44.2, D44.9, D47.1, D47.2, D47.9, D47.Z9, D48.0-D48.2, D48.60-D48.62, D48.7, D48.9, D49.0-D49.7, D49.9, D64.9, D75.9, D78.01, D78.02, D78.21, D78.22, D89.2, E01.0-E01.2, E03.4, E03.9, E04.0-E04.9, E06.0, E07.89, E07.9, E35, E36.01, E36.02, E65, E78.71, E89.820-E89.823, G97.31, G97.32, G97.51, G97.52, G97.63, G97.64, H66.10-H66.13, H69.80-H69.83, H93.8X1-H93.8X9, H94.80-H94.83, H95.21, H95.22, H95.41, H95.42, H95.53, H95.54, I42.0-I42.5, I42.8, I42.9, I70.235, I70.245, I70.335, I70.345, I70.435, I70.445, I70.535, I70.545, I70.635, I70.645, I70.735, I70.745, I82.91, I88.1-I88.9, I89.8, I97.410-I97.418, I97.42, I97.610-I97.618, I97.622, I97.640-I97.648, J95.61, J95.62, J95.830, J95.831, J95.862, J95.863, J98.4, K11.20-K11.23, K11.3-K11.6, K11.9, K91.61, K91.62, K91.840, K91.841, K91.870-K91.873, L02.31, L02.415, L02.416, L02.419, L02.91, L03.115, L03.116, L03.119, L03.125, L03.126, L03.129, L03.317, L03.327, L03.90, L03.91, L57.0, L76.01, L76.02, L76.21, L76.22, L76.31-L76.34, L97.501-L97.504, L97.509, L97.511-L97.514, L97.519, L97.521-L97.524, L97.529, L98.3, L98.7, M54.2, M70.20-M70.22, M71.30, M77.10-M77.12, M79.4, M81.0, M96.810, M96.811, M96.830, M96.831, M96.840-M96.843, N60.01-N60.09, N60.11-N60.19, N61.0, N62, N63.0, N63.10-N63.15, N63.20-N63.25, N63.31, N63.32, N63.41, N63.42, N64.1, N64.4, N99.61, N99.62, N99.820, N99.821, N99.840-N99.843, Q18.0-Q18.9, Q87.2, Q87.3, Q87.5, Q87.81, Q87.89, Q89.2, Q89.8, R13.0, R13.10, R18.8, R19.02, R20.8, R20.9, R22.0-R22.2, R22.30-R22.33, R22.40-R22.43, R22.9, R29.4, R59.0-R59.9, R68.89, R69, R90.0, R92.1, R92.8, R99, S90.421D, S90.422D, S90.423D, S90.424D, S90.425D, S90.426D, S90.521D, S90.522D, S90.529D, S90.821D, S90.822D, S90.829D, S90.869A, Y84.4, Z00.6, Z12.89, Z85.21, Z85.3, Z85.6, Z86.79

10005

Fine needle aspiration biopsy, including ultrasound guidance; first lesion

Clinical Responsibility

With the patient properly prepared and anesthetized (typically with local anesthesia), the provider inserts a needle, such as an 18- to 25-gauge needle with an attached syringe, under ultrasound imaging guidance into a suspicious lesion or area of tissue and withdraws cells, tissue, or fluid for laboratory analysis. The provider may make several passes to obtain an adequate specimen. The provider then sends the aspirate to the pathology lab for analysis.

Coding Tips

Report +10006 for each additional lesion in addition to the primary code 10005.

For FNA of an initial lesion using other types of imaging guidance, see 10007 (fluoroscopy), 10009 (CT), and 10011 (MRI) and +10008, +10010 and +10012 for each additional lesion respectively.

RVU Facility Work RVU: 1.81, PE RVU: 0.67, Malpractice RVU: 0.19, Total RVU: 2.67

RVU Non-Facility Work RVU: 1.81, PE RVU: 7.06, Malpractice RVU: 0.19, Total RVU: 9.06

Indicators Preoperative: 0.00, Intraoperative: 0.00, Postoperative: 0.00, Total RVU: 0, Global Period: XXX, Radiology Diagnostic Test: 99, Code Status: A, PC/TC Indicator: 0, Endoscopic Base Code: None, MUE: 1

Modifier Allowances 22, 51, 52, 53, 58, 59, 76, 77, 78, 79, 80, 81, 82, 99, AQ, AR, AS, GA, GC, GZ, LT, PD, Q6, QJ, RT, SC, XE, XP, XS, XU

CCI Alerts (version 27.3)

0213T¹, 0216T¹, 10004¹, 10005¹, 10006¹, 10010¹, 10011¹, 10012¹, 10021¹, 10035¹, 11102¹, 11103¹, 11104¹, 11105¹, 11106¹, 11107¹, 19281¹, 19283¹, 19285¹, 19287¹, 36000¹, 36410¹, 36591⁰, 36592⁰, 61650¹, 62324¹, 62325¹, 62326¹, 62327¹, 64415¹, 64416¹, 64417¹, 64450¹, 64454¹, 64486¹, 64487¹, 64488¹, 64489¹, 64490¹, 64493¹, 76000¹, 76380¹, 76942¹, 76998¹, 77001¹, 77002¹, 77012¹, 77021¹, 96360¹, 96365¹, 96372¹, 96374¹, 96375¹, 96376¹, 96377¹, 96523⁰, J2001¹

ICD-10 CrossRef

C00.3, C01, C02.9, C04.1, C06.9, C07, C08.0, C12, C13.9, C15.9, C22.0-C22.4, C22.7, C22.8, C32.1, C32.8, C34.30-C34.32, C43.20-C43.22, C43.30-C43.39, C43.51-C43.59, C43.60-C43.62, C46.0, C50.011-C50.019, C50.111-C50.119, C50.211-C50.219, C50.411-C50.419, C50.811-C50.819, C50.911-C50.919, C51.9, C76.0, C76.1, C77.0, C77.3, C79.2, C79.81, C79.89, C79.9, C81.00-C81.09, C81.10-C81.19, C81.20-C81.29, C81.30-C81.39, C81.40-C81.49, C81.70-C81.79, C81.90-C81.99, C82.00-C82.09, C82.10-C82.19, C82.20-C82.29, C82.30-C82.39, C82.40-C82.49, C82.50-C82.59, C82.60-C82.69, C82.80-C82.89, C82.90-C82.99, C83.00-C83.09, C83.10-C83.19, C83.30-C83.39, C83.50-C83.59, C83.70-C83.79, C83.80-C83.89, C83.90-C83.99, C84.40-C84.49, C84.60-C84.69, C84.70-C84.79, C84.76, C84.77, C84.78, C84.79, C84.90-C84.99, C84.A0-C84.A9, C84.Z0-C84.Z9, C85.10-C85.19, C85.20-C85.29, C85.80-C85.89, C85.90-C85.99, C86.0-C86.5, C88.4, C88.8, C91.50-C91.52, C94.40-C94.42, C94.6, D03.20-D03.22, D03.30, D03.39, D03.51-D03.59, D03.60-D03.62, D05.00-D05.02, D05.10-D05.12, D05.80-D05.82, D05.90-D05.92, D11.0-D11.9, D17.0, D17.1, D17.20-D17.24, D17.30, D17.39, D17.72, D17.79, D17.9, D19.7, D21.0, D22.5, D22.70-D22.72, D23.5, D23.70-D23.72, D36.0, D36.7, D37.030-D37.039, D44.0-D44.2, D44.9, D47.1, D47.2, D47.9, D47.Z9, D48.1, D48.2, D48.60-D48.62, D48.7, D48.9, D49.0-D49.7, D49.9, D64.9, D75.9, D78.01, D78.02, D78.21, D78.22, D89.2, E01.0-E01.2, E03.4, E03.9, E04.0-E04.9, E06.0, E07.89, E07.9, E35, E36.01, E36.02, E65, E78.71, E89.820-E89.823, G97.31, G97.32, G97.51, G97.52, G97.63, G97.64, H66.10-H66.13, H69.80-H69.83, H93.8X1-H93.8X9, H94.80-H94.83, H95.21, H95.22, H95.41, H95.42, H95.53, H95.54, I42.0-I42.5, I42.8, I42.9, I70.235, I70.245, I70.335, I70.345, I70.435, I70.445, I70.535, I70.545, I70.635, I70.645, I70.735, I70.745, I82.91, I88.1-I88.9, I89.8, I97.410-I97.418, I97.42, I97.610-I97.618, I97.622, I97.640-I97.648, J95.61, J95.62, J95.830, J95.831, J95.862, J95.863, J98.4, K11.20-K11.23, K11.3-K11.6, K11.9, K91.61, K91.62, K91.840, K91.841, K91.870-K91.873, L02.31, L02.415, L02.416, L02.419, L02.91, L03.115, L03.116, L03.119, L03.125, L03.126, L03.129, L03.317, L03.327, L03.90, L03.91, L57.0, L76.01, L76.02, L76.21, L76.22, L76.31-L76.34, L97.501-L97.504, L97.509, L97.511-L97.514, L97.519, L97.521-L97.524, L97.529, L98.3, L98.7, M71.30, M79.4, M96.810, M96.811, M96.830,

M96.831, M96.840-M96.843, N60.01-N60.09, N60.11-N60.19, N61.0, N62, N63.0, N63.10-N63.15, N63.20-N63.25, N63.31, N63.32, N63.41, N63.42, N64.1, N99.61, N99.62, N99.820, N99.821, N99.840-N99.843, R18.8, R19.02, R20.8, R20.9, R22.0-R22.2, R22.30-R22.33, R22.40-R22.43, R22.9, R59.0-R59.9, R90.0, R92.1, R92.8, S14.111A-S14.111S, S14.112A-S14.112S, S14.113A-S14.113S, S14.114A-S14.114S, S14.115A-S14.115S, S14.116A-S14.116S, S14.117A-S14.117S, S14.118A-S14.118S, S14.119A-S14.119S, S14.151A-S14.151S, S14.152A-S14.152S, S14.153A-S14.153S, S14.154A-S14.154S, S14.155A-S14.155S, S14.156A-S14.156S, S14.157A-S14.157S, S14.158A-S14.158S, S14.159A-S14.159S, S24.111A-S24.111S, S24.112A-S24.112S, S24.113A-S24.113S, S24.114A-S24.114S, S24.119A-S24.119S, S24.151A-S24.151S, S24.152A-S24.152S, S24.153A-S24.153S, S24.154A-S24.154S, S24.159A-S24.159S, S34.111A-S34.111S, S34.112A-S34.112S, S34.113A-S34.113S, S34.114A-S34.114S, S34.115A-S34.115S, S34.119A-S34.119S, S34.121A-S34.121S, S34.122A-S34.122S, S34.123A-S34.123S, S34.124A-S34.124S, S34.125A-S34.125S, S34.129A-S34.129S, S90.869A, Y84.4, Z00.6, Z12.89, Z85.21, Z85.3, Z85.6, Z85.71, Z85.72

+10008

Fine needle aspiration biopsy, including fluoroscopic guidance; each additional lesion (List separately in addition to code for primary procedure)

Clinical Responsibility

With the patient properly prepared and anesthetized (typically with local anesthesia) and following FNA of an initial lesion, the provider inserts a needle, such as an 18- to 25-gauge needle with an attached syringe, under fluoroscopic imaging guidance into an additional suspicious lesion or area of tissue and withdraws cells, tissue, or fluid for laboratory analysis. The provider may make several passes to obtain an adequate specimen. The provider then sends the aspirate to the pathology lab for analysis.

Coding Tips

For FNA of an initial lesion using other types of imaging guidance, see 10005 (ultrasound), 10009 (CT), and 10011 (MRI) and +10006, +10010 and +10012 for each additional lesion respectively.

For FNA without imaging guidance, report 10021 for the initial lesion and +10004 for each additional lesion.

Fee Schedule

Medicare Fees National Conversion Factor: 34.8931, Facility: \$59.32, Non Facility: \$167.84, OPPS Facility: \$41.17, OPPS Non Facility: \$41.17

RVU Facility Work RVU: 1.18, PE RVU: 0.41, Malpractice RVU: 0.11, Total RVU: 1.70

RVU Non-Facility Work RVU: 1.18, PE RVU: 3.52, Malpractice RVU: 0.11, Total RVU: 4.81

Indicators Preoperative: 0.00, Intraoperative: 0.00, Postoperative: 0.00, Total RVU: 0, Global Period: ZZZ, Radiology Diagnostic Test: 99, Code Status: A, PC/TC Indicator: 0, Endoscopic Base Code: None, MUE: 2

CCI Alerts (version 27.3)

0213T⁰, 0216T⁰, 0596T¹, 0597T¹, 12001¹, 12002¹, 12004¹, 12005¹, 12006¹, 12007¹, 12011¹, 12013¹, 12014¹, 12015¹, 12016¹, 12017¹, 12018¹, 12020¹, 12021¹, 12031¹, 12032¹, 12034¹, 12035¹, 12036¹, 12037¹, 12041¹, 12042¹, 12044¹, 12045¹, 12046¹, 12047¹, 12051¹, 12052¹, 12053¹, 12054¹, 12055¹, 12056¹, 12057¹, 13100¹, 13101¹, 13102¹, 13120¹, 13121¹, 13122¹, 13131¹, 13132¹, 13133¹, 13151¹, 13152¹, 13153¹, 36000¹, 36400¹, 36405¹, 36406¹, 36410¹, 36420¹, 36425¹, 36430¹, 36440¹, 36591⁰, 36592⁰, 36600¹, 36640¹, 43752¹, 51701¹, 51702¹, 51703¹, 62320⁰, 62321⁰, 62322⁰, 62323⁰, 62324⁰, 62325⁰, 62326⁰, 62327⁰, 64400⁰, 64405⁰, 64408⁰, 64415⁰, 64416⁰, 64417⁰, 64418⁰, 64420⁰, 64421⁰, 64425⁰, 64430⁰, 64435⁰, 64445⁰, 64446⁰, 64447⁰, 64448⁰, 64449⁰, 64450⁰, 64451⁰, 64454⁰, 64461⁰, 64462⁰, 64463⁰, 64479⁰, 64480⁰, 64483⁰, 64484⁰, 64486⁰, 64487⁰, 64488⁰, 64489⁰, 64490⁰, 64491⁰, 64492⁰, 64493⁰, 64494⁰, 64495⁰, 64505⁰, 64510⁰, 64517⁰, 64520⁰, 64530⁰, 69990⁰, 75600¹, 75605¹, 92012¹, 92014¹, 93000¹, 93005¹, 93010¹, 93040¹, 93041¹, 93042¹, 93050¹, 93318¹, 93355⁰, 94002¹, 94200¹, 94680¹, 94681¹, 94690¹, 95812¹, 95813¹, 95816¹, 95819¹, 95822¹, 95829¹, 95955¹, 96360¹, 96361¹, 96365¹, 96366¹, 96367¹, 96368¹, 96372¹, 96374¹, 96375¹, 96376¹, 96377¹, 96523⁰, 99155⁰, 99156⁰, 99157⁰, 99211¹, 99212¹, 99213¹, 99214¹, 99215¹, 99217¹, 99218¹, 99219¹, 99220¹, 99221¹, 99222¹, 99223¹, 99231¹, 99232¹, 99233¹, 99234¹, 99235¹, 99236¹, 99238¹, 99239¹, 99241¹, 99242¹, 99243¹, 99244¹, 99245¹, 99251¹, 99252¹, 99253¹, 99254¹, 99255¹, 99291¹, 99292¹, 99304¹, 99305¹, 99306¹, 99307¹, 99308¹, 99309¹, 99310¹, 99315¹, 99316¹, 99334¹, 99335¹, 99336¹, 99337¹, 99347¹, 99348¹, 99349¹, 99350¹, 99374¹, 99375¹, 99377¹, 99378¹, 99446⁰, 99447⁰, 99448⁰, 99449⁰, 99451⁰, 99452⁰, 99495¹, 99496¹, G0463¹, G0471¹

ICD-10 CrossRef

I70.8, I71.01, I71.03, I71.1, I71.2, I71.5, I71.6, I74.11, I77.1, I77.71, Q21.3, Q25.21, Q25.29, Q25.3-Q25.9, Q25.40-Q25.49, Q28.2, Q28.3, T81.41XA-T81.41XS, T81.42XA-T81.42XS, T81.43XA-T81.43XS, T81.49XA-T81.49XS

33891

Bypass graft, with other than vein, transcervical retropharyngeal carotid-carotid, performed in conjunction with endovascular repair of descending thoracic aorta, by neck incision

Clinical Responsibility

When the patient is appropriately prepped and anesthetized, the provider incises the left and right sides of the neck to reach the common carotid arteries. He identifies, isolates, and dissects the common carotid artery from surrounding structures. She then creates a tunnel from one side of the neck to the other, cutting into the soft tissue behind the pharynx, or retropharyngeal. She places a tube in the tunnel and opens one of the carotid arteries and attaches one end of the tube to the artery. She makes an opening in the other carotid artery and connects the free end of the tube to this artery opening. Alternatively, she clamps the vessel on either side of the problem area in the carotid artery and incises the artery above the damage or blockage. She then sutures the synthetic vein graft to this open end and then sutures the graft to the side of the artery on the other side of the neck. In either approach, the

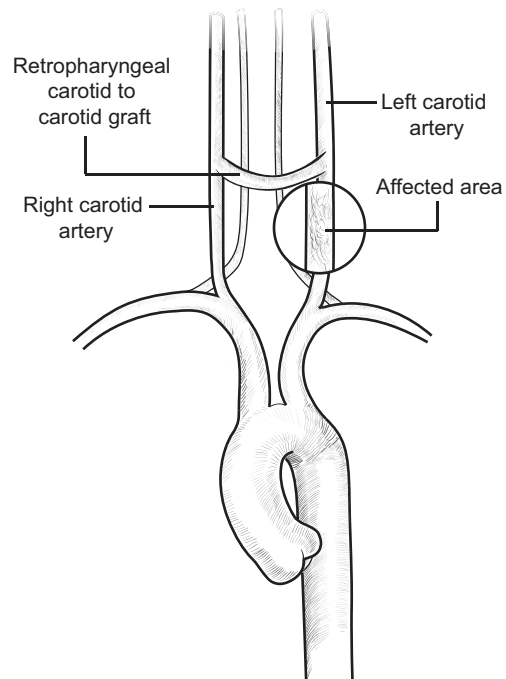
provider leaves the problem area there but effectively bypasses it. When the procedure is complete, she closes the incision with sutures.

Coding Tips

If an anesthesiology provider places a cerebral spinal fluid or CSF drain catheter while providing anesthesia during a vascular procedure, report both services, the administration of anesthesia and catheter placement, as long as the anesthesia provider did not use the CSF drain catheter for something related to the anesthesia administration. The most common vascular procedures using spinal cord CSF drainage are an elective repair of a thoracic aneurysm or dissection of the aorta.

Report endograft replacement with the most appropriate code from the range 33880 to 33891. Choose the best code from the range 33863 to 33877 in the thoracic aortic aneurysm section for the open repair. Procedures in this section range from ascending aortic graft or transverse arch graft to repair of a thoracoabdominal aortic aneurysm with graft.

Illustration



33891

Fee Schedule

Medicare Fees National Conversion Factor: 34.8931, Facility: \$976.31, Non Facility: \$976.31, OPPS Facility: \$697.86, OPPS Non Facility: \$697.86

RVU Facility Work RVU: 20.00, PE RVU: 3.15, Malpractice RVU: 4.83, Total RVU: 27.98

RVU Non-Facility Work RVU: 20.00, PE RVU: 3.15, Malpractice RVU: 4.83, Total RVU: 27.98

Indicators Preoperative: 0.00, Intraoperative: 0.00, Postoperative: 0.00, Total RVU: 0, Global Period: 000, Radiology Diagnostic Test: 99, Code Status: A, PC/TC Indicator: 0, Endoscopic Base Code: None, MUE: 1

Modifier Allowances 22, 47, 50, 51, 52, 53, 58, 59, 62, 63, 76, 77, 78, 79, 80, 81, 82, 99, AQ, AR, AS, CR, ET, GA, GC, GJ, GR, KX, LT, PD, Q5, Q6, QJ, RT, XE, XP, XS, XU

CCI Alerts (version 27.3)

0213T⁰, 0216T⁰, 0596T¹, 0597T¹, 12001¹, 12002¹, 12004¹, 12005¹, 12006¹, 12007¹, 12011¹, 12013¹, 12014¹, 12015¹, 12016¹, 12017¹, 12018¹, 12020¹, 12021¹, 12031¹, 12032¹, 12034¹, 12035¹, 12036¹, 12037¹, 12041¹, 12042¹, 12044¹, 12045¹, 12046¹, 12047¹, 12051¹, 12052¹, 12053¹, 12054¹, 12055¹, 12056¹, 12057¹, 13100¹, 13101¹, 13102¹, 13120¹, 13121¹, 13122¹, 13131¹, 13132¹, 13133¹, 13151¹, 13152¹, 13153¹, 35509¹, 35601¹, 35701¹, 36000¹, 36400¹, 36405¹, 36406¹, 36410¹, 36420¹, 36425¹, 36430¹, 36440¹, 36591⁰, 36592⁰, 36600¹, 36640¹, 43752¹, 51701¹, 51702¹, 51703¹, 62320⁰, 62321⁰, 62322⁰, 62323⁰, 62324⁰, 62325⁰, 62326⁰, 62327⁰, 64400⁰, 64405⁰, 64408⁰, 64415⁰, 64416⁰, 64417⁰, 64418⁰, 64420⁰, 64421⁰, 64425⁰, 64430⁰, 64435⁰, 64445⁰, 64446⁰, 64447⁰, 64448⁰, 64449⁰, 64450⁰, 64451⁰, 64454⁰, 64461⁰, 64462⁰, 64463⁰, 64479⁰, 64480⁰, 64483⁰, 64484⁰, 64486⁰, 64487⁰, 64488⁰, 64489⁰, 64490⁰, 64491⁰, 64492⁰, 64493⁰, 64494⁰, 64495⁰, 64505⁰, 64510⁰, 64517⁰, 64520⁰, 64530⁰, 69990⁰, 75600¹, 75605¹, 92012¹, 92014¹, 93000¹, 93005¹, 93010¹, 93040¹, 93041¹, 93042¹, 93050¹, 93318¹, 93355⁰, 94002¹, 94200¹, 94680¹, 94681¹, 94690¹, 95812¹, 95813¹, 95816¹, 95819¹, 95822¹, 95829¹, 95955¹, 96360¹, 96361¹, 96365¹, 96366¹, 96367¹, 96368¹, 96372¹, 96374¹, 96375¹, 96376¹, 96377¹, 96523⁰, 99155⁰, 99156⁰, 99157⁰, 99211¹, 99212¹, 99213¹, 99214¹, 99215¹, 99217¹, 99218¹, 99219¹, 99220¹, 99221¹, 99222¹, 99223¹, 99231¹, 99232¹, 99233¹, 99234¹, 99235¹, 99236¹, 99238¹, 99239¹, 99241¹, 99242¹, 99243¹, 99244¹, 99245¹, 99251¹, 99252¹, 99253¹, 99254¹, 99255¹, 99291¹, 99292¹, 99304¹, 99305¹, 99306¹, 99307¹, 99308¹, 99309¹, 99310¹, 99315¹, 99316¹, 99334¹, 99335¹, 99336¹, 99337¹, 99347¹, 99348¹, 99349¹, 99350¹, 99374¹, 99375¹, 99377¹, 99378¹, 99446⁰, 99447⁰, 99448⁰, 99449⁰, 99451⁰, 99452⁰, 99495¹, 99496¹, G0463¹, G0471¹

ICD-10 CrossRef

I63.031, I63.032, I63.039, I63.09, I63.131, I63.132, I63.139, I63.19, I63.231, I63.232, I63.239, I63.59, I65.21-I65.29, I65.8, I70.8, I71.01, I71.03, I71.1, I71.2, I71.5, I71.6, I72.0, I74.11, I77.1, I77.71, Q21.3, Q25.21, Q25.29, Q25.3-Q25.9, Q25.40-Q25.47, Q25.49, Q28.2, Q28.3, T81.41XA-T81.41XS, T81.42XA-T81.42XS, T81.43XA-T81.43XS, T81.49XA-T81.49XS, Y83.2

33946

Extracorporeal membrane oxygenation (ECMO)/extracorporeal life support (ECLS) provided by physician; initiation, veno-venous

Clinical Responsibility

When the patient is appropriately prepped and anesthetized, the provider incises the skin over the right jugular vein. He then cleans the area around the vein to insert a cannula into the open end of the vein. The provider then slowly inserts the cannula, through the right jugular vein into the heart's right atrium. This tube acts

as an exit point for the oxygen-depleted blood from the body into an external device that acts as an artificial lung, or oxygenator. Depending upon the type of cannula the provider uses, the blood may return through the same cannula as with a double lumen catheter. If the provider uses a single lumen catheter, he must then create a means for insertion of the returning oxygenated blood.

The provider uses the extracorporeal circulation device to actively pump the blood through the oxygenator in the external device, where the gas exchange occurs. A heat exchanger acts to warm the blood to body temperature before returning the blood to the patient through the cannula. Once all cannula are appropriately in position and secure, and flows are optimal, the provider then closes the incision with sutures.

Coding Tips

If the provider uses a veno-arterial (VA) route, see 33947.

Fee Schedule

Medicare Fees National Conversion Factor: 34.8931, Facility: \$315.08, Non Facility: \$315.08, OPPS Facility: \$209.36, OPPS Non Facility: \$209.36

RVU Facility Work RVU: 6.00, PE RVU: 1.82, Malpractice RVU: 1.21, Total RVU: 9.03

RVU Non-Facility Work RVU: 6.00, PE RVU: 1.82, Malpractice RVU: 1.21, Total RVU: 9.03

Indicators Preoperative: 0.00, Intraoperative: 0.00, Postoperative: 0.00, Total RVU: 0, Global Period: XXX, Radiology Diagnostic Test: 99, Code Status: A, PC/TC Indicator: 0, Endoscopic Base Code: None, MUE: 1

Modifier Allowances 22, 47, 52, 53, 59, 76, 77, 79, 99, AQ, AR, CR, ET, GA, GC, GJ, GR, KX, PD, Q5, Q6, QJ, XE, XP, XS, XU

CCI Alerts (version 27.3)

33948⁰, 33949⁰, 33957⁰, 33958⁰, 33959⁰, 33962⁰, 36591⁰, 36592⁰, 96523⁰

ICD-10 CrossRef

I40.0, I40.1, I46.2-I46.9, I97.0, I97.110, I97.111, I97.120, I97.121, I97.130, I97.131, I97.190, I97.191, I97.710, I97.711, I97.790, I97.791, I97.88, I97.89, J80, J95.1-J95.5, J95.821, J95.822, J95.859, J95.862, J95.863, J95.88, J95.89, J96.00-J96.02, J96.20-J96.22, J96.90-J96.92, P22.0, P24.01, P25.0-P25.8, P28.5, P29.30, P29.38, P84, Q22.2, Q23.8, Q23.9, Q24.8, Q79.0, Q79.1, R09.2, R57.0, R57.9, T71.141A, T71.141D, T71.144A, T71.144D, T71.151A, T71.151D, T71.152A, T71.152D, T71.154A, T71.154D, T71.161A, T71.161D, T71.162A, T71.162D, T71.164A, T71.164D, T71.191A, T71.191D, T71.192A, T71.192D, T71.194A, T71.194D, T71.20XA, T71.20XD, T71.21XA, T71.21XD, T71.221A, T71.221D, T71.222A, T71.222D, T71.224A, T71.224D, T71.231A, T71.231D, T71.232A, T71.232D, T71.234A, T71.234D, T71.29XA, T71.29XD, T71.9XXD, T86.20-T86.23, T86.290, T86.298, T86.30-T86.39, T86.810-T86.819, Z76.82

ICD-10 CrossRef

I67.0, I71.02, I71.03, I71.3-I71.5, I71.8, I72.2, I72.3, I72.8, I74.5-I74.9, I77.70-I77.73, I77.79, Q25.40-Q25.42, Q25.44, Q25.45, Q25.46, Q25.47, Q25.49, Q26.5, Q26.6, Q27.1, Q27.2, Q27.30-Q27.34, Q27.4, Q28.0, Q28.1, Q28.8

34848

Endovascular repair of visceral aorta and infrarenal abdominal aorta (eg, aneurysm, pseudoaneurysm, dissection, penetrating ulcer, intramural hematoma, or traumatic disruption) with a fenestrated visceral aortic endograft and concomitant unibody or modular infrarenal aortic endograft and all associated radiological supervision and interpretation, including target zone angioplasty, when performed; including four or more visceral artery endoprostheses (superior mesenteric, celiac and/or renal artery[s])

Clinical Responsibility

The patient is positioned and prepped, and anesthesia is administered. The provider then makes a small surgical incision near the groin area to access a femoral artery, introduces an endovascular device, and advances a guidewire from the femoral artery into the ascending aorta. Under imaging guidance, the provider identifies the location of the aneurysm (or other vascular problem to be treated) and guides the wire through the site to a point above the renal arteries. The provider cuts into the opposite femoral artery, places a sheath, and moves forward another guidewire toward the ascending aorta. The provider then introduces a special device, moves the fenestrated endoprosthesis into place, and fixates it to achieve the desired repair of the aorta. Under imaging guidance, four or more additional visceral artery prostheses are then moved through the fenestration and fixed in place. Aortography may be performed to view the treatment site. He also places either a unibody (one-piece) or modular (multi-piece) endograft to repair the aorta below the kidneys. This endograft could be bifurcated unibody, modular bifurcated with docking limb(s), aorto-uni-iliac, or aorto-uni-femoral. Angioplasty of the target area may be performed during the encounter. The provider then performs a complete examination of the blood vessels to analyze the accurate fixation of the endografts, presence or absence of any persistent blood flow, or any stricture or blood clot in between the arteries. Once everything is inspected, the provider withdraws the instruments and finally closes the incision in layers.

Coding Tips

There are multiple codes for endovascular repair of the visceral aorta; study the documentation and the descriptors for codes 34841 to 34848 to choose the best code. For example, codes 34841, 34842, 34843, and 34844 are for endovascular repair of the visceral aorta, and the difference is whether one, two, three, or four or more visceral artery endoprostheses were used, respectively. Codes 34845, 34846, 34847, and 34848 are also for endovascular repair of the visceral aorta but differ from the above four in that they include repair of the infrarenal abdominal aorta, with concomitant unibody or modular infrarenal aortic endograft and again, the difference in these four codes is whether one, two, three, or four or more visceral artery endoprostheses were used.

Fee Schedule

Medicare Fees National Conversion Factor: 34.8931, Facility: \$0.00, Non Facility: \$0.00, OPPS Facility: \$0.00, OPPS Non Facility: \$0.00
RVU Facility Work RVU: 0.00, PE RVU: 0.00, Malpractice RVU: 0.00, Total RVU: 0.00

RVU Non-Facility Work RVU: 0.00, PE RVU: 0.00, Malpractice RVU: 0.00, Total RVU: 0.00

Indicators Preoperative: 0.00, Intraoperative: 0.00, Postoperative: 0.00, Total RVU: 0, Global Period: YYY, Radiology Diagnostic Test: 99, Code Status: C, PC/TC Indicator: 0, Endoscopic Base Code: None, MUE: 1

Modifier Allowances 22, 47, 51, 52, 53, 58, 59, 62, 76, 77, 78, 79, 80, 81, 82, 99, AK, AQ, AR, AS, CR, ET, GA, GC, GD, GJ, GR, KX, Q5, Q6, QJ, XE, XP, XS, XU

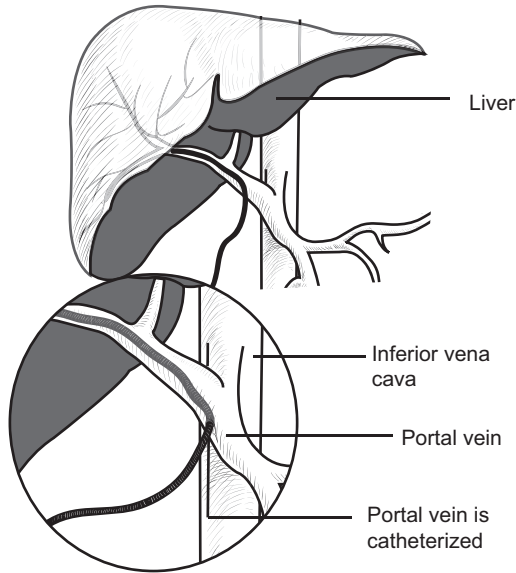
CCI Alerts (version 27.3)

0075T¹, 01926⁰, 0213T⁰, 0216T⁰, 0553T¹, 0596T¹, 0597T¹, 11000¹, 11001¹, 11004¹, 11005¹, 11006¹, 11042¹, 11043¹, 11044¹, 11045¹, 11046¹, 11047¹, 12001¹, 12002¹, 12004¹, 12005¹, 12006¹, 12007¹, 12011¹, 12013¹, 12014¹, 12015¹, 12016¹, 12017¹, 12018¹, 12020¹, 12021¹, 12031¹, 12032¹, 12034¹, 12035¹, 12036¹, 12037¹, 12041¹, 12042¹, 12044¹, 12045¹, 12046¹, 12047¹, 12051¹, 12052¹, 12053¹, 12054¹, 12055¹, 12056¹, 12057¹, 13100¹, 13101¹, 13102¹, 13120¹, 13121¹, 13122¹, 13131¹, 13132¹, 13133¹, 13151¹, 13152¹, 13153¹, 34712¹, 34839⁰, 34841⁰, 34842⁰, 34843⁰, 34844⁰, 34845⁰, 34846⁰, 34847⁰, 35082¹, 35091⁰, 35092¹, 35103¹, 35201¹, 35206¹, 35226¹, 35231¹, 35236¹, 35256¹, 35261¹, 35266¹, 35286¹, 36000¹, 36140¹, 36200¹, 36245¹, 36246¹, 36247¹, 36248¹, 36400¹, 36405¹, 36406¹, 36410¹, 36420¹, 36425¹, 36430¹, 36440¹, 36591⁰, 36592⁰, 36600¹, 36620¹, 36625¹, 36640¹, 37184¹, 37211¹, 37212¹, 37213¹, 37214¹, 37217¹, 37218¹, 37220¹, 37221¹, 37222¹, 37223¹, 37236¹, 37237¹, 37238¹, 37246⁰, 37247¹, 43752¹, 51701¹, 51702¹, 51703¹, 61645¹, 61650¹, 62320⁰, 62321⁰, 62322⁰, 62323⁰, 62324⁰, 62325⁰, 62326⁰, 62327⁰, 64400⁰, 64405⁰, 64408⁰, 64415⁰, 64416⁰, 64417⁰, 64418⁰, 64420⁰, 64421⁰, 64425⁰, 64430⁰, 64435⁰, 64445⁰, 64446⁰, 64447⁰, 64448⁰, 64449⁰, 64450⁰, 64451⁰, 64454⁰, 64461⁰, 64463⁰, 64479⁰, 64483⁰, 64486⁰, 64487⁰, 64488⁰, 64489⁰, 64490⁰, 64493⁰, 64505⁰, 64510⁰, 64517⁰, 64520⁰, 64530⁰, 69990⁰, 75625¹, 75630¹, 75635¹, 76000¹, 76942¹, 76998¹, 77001¹, 77002¹, 92012¹, 92014¹, 93000¹, 93005¹, 93010¹, 93040¹, 93041¹, 93042¹, 93050⁰, 93318¹, 93355¹, 94002¹, 94200¹, 94680¹, 94681¹, 94690¹, 95812¹, 95813¹, 95816¹, 95819¹, 95822¹, 95829¹, 95955¹, 96360¹, 96365¹, 96372¹, 96374¹, 96375¹, 96376¹, 96377¹, 96523⁰, 97597¹, 97598¹, 97602¹, 99155⁰, 99156⁰, 99157⁰, 99211¹, 99212¹, 99213¹, 99214¹, 99215¹, 99217¹, 99218¹, 99219¹, 99220¹, 99221¹, 99222¹, 99223¹, 99231¹, 99232¹, 99233¹, 99234¹, 99235¹, 99236¹, 99238¹, 99239¹, 99241¹, 99242¹, 99243¹, 99244¹, 99245¹, 99251¹, 99252¹, 99253¹, 99254¹, 99255¹, 99291¹, 99292¹, 99304¹, 99305¹, 99306¹, 99307¹, 99308¹, 99309¹, 99310¹, 99315¹, 99316¹, 99334¹, 99335¹, 99336¹, 99337¹, 99347¹, 99348¹, 99349¹, 99350¹, 99374¹, 99375¹, 99377¹, 99378¹, 99446⁰, 99447⁰, 99448⁰, 99449⁰, 99451⁰, 99452⁰, G0278⁰, G0463¹, G0471¹

ICD-10 CrossRef

I67.0, I71.02, I71.03, I71.3-I71.5, I71.8, I72.2, I72.3, I72.8, I74.5-I74.9, I77.70-I77.73, I77.79, Q25.40-Q25.42, Q25.44, Q25.45, Q25.46, Q25.47, Q25.49, Q26.5, Q26.6, Q27.1, Q27.2, Q27.30-Q27.34, Q27.4, Q28.0, Q28.1, Q28.8

Illustration



36481

95955¹, 96360¹, 96361¹, 96365¹, 96366¹, 96367¹, 96368¹, 96372¹, 96374¹, 96375¹, 96376¹, 96377¹, 96523⁰, 99155⁰, 99156⁰, 99157⁰, 99211¹, 99212¹, 99213¹, 99214¹, 99215¹, 99217¹, 99218¹, 99219¹, 99220¹, 99221¹, 99222¹, 99223¹, 99231¹, 99232¹, 99233¹, 99234¹, 99235¹, 99236¹, 99238¹, 99239¹, 99241¹, 99242¹, 99243¹, 99244¹, 99245¹, 99251¹, 99252¹, 99253¹, 99254¹, 99255¹, 99291¹, 99292¹, 99304¹, 99305¹, 99306¹, 99307¹, 99308¹, 99309¹, 99310¹, 99315¹, 99316¹, 99334¹, 99335¹, 99336¹, 99337¹, 99347¹, 99348¹, 99349¹, 99350¹, 99374¹, 99375¹, 99377¹, 99378¹, 99446⁰, 99447⁰, 99448⁰, 99449⁰, 99451⁰, 99452⁰, 99495¹, 99496¹, G0463¹, G0471¹, J0670¹, J1642¹, J1644¹, J2001¹

ICD-10 CrossRef

C78.7, K70.2, K70.30, K70.31, K76.6, R93.2, R93.5

36482

Endovenous ablation therapy of incompetent vein, extremity, by transcatheter delivery of a chemical adhesive (eg, cyanoacrylate) remote from the access site, inclusive of all imaging guidance and monitoring, percutaneous; first vein treated

Fee Schedule

Medicare Fees National Conversion Factor: 34.8931, Facility: \$330.44, Non Facility: \$1,969.37, OPPS Facility: \$234.83, OPPS Non Facility: \$234.83

RVU Facility Work RVU: 6.73, PE RVU: 2.06, Malpractice RVU: 0.68, Total RVU: 9.47

RVU Non-Facility Work RVU: 6.73, PE RVU: 49.03, Malpractice RVU: 0.68, Total RVU: 56.44

Indicators Preoperative: 0.00, Intraoperative: 0.00, Postoperative: 0.00, Total RVU: 0, Global Period: 000, Radiology Diagnostic Test: 99, Code Status: A, PC/TC Indicator: 0, Endoscopic Base Code: None, MUE: 1

Modifier Allowances 22, 47, 51, 52, 53, 58, 59, 63, 76, 77, 78, 79, 99, AQ, AR, CR, ET, GA, GC, GJ, GR, KX, PD, Q5, Q6, QJ, XE, XP, XS, XU

CCI Alerts (version 27.3)

0213T⁰, 0216T⁰, 0596T¹, 0597T¹, 12001¹, 12002¹, 12004¹, 12005¹, 12006¹, 12007¹, 12011¹, 12013¹, 12014¹, 12015¹, 12016¹, 12017¹, 12018¹, 12020¹, 12021¹, 12031¹, 12032¹, 12034¹, 12035¹, 12036¹, 12037¹, 12041¹, 12042¹, 12044¹, 12045¹, 12046¹, 12047¹, 12051¹, 12052¹, 12053¹, 12054¹, 12055¹, 12056¹, 12057¹, 13100¹, 13101¹, 13102¹, 13120¹, 13121¹, 13122¹, 13131¹, 13132¹, 13133¹, 13151¹, 13152¹, 13153¹, 35201¹, 35206¹, 35226¹, 35231¹, 35236¹, 35256¹, 35261¹, 35266¹, 35286¹, 36000¹, 36002¹, 36400¹, 36405¹, 36406¹, 36410¹, 36420¹, 36425¹, 36430¹, 36440¹, 36591⁰, 36592⁰, 36600¹, 36640¹, 43752¹, 51701¹, 51702¹, 51703¹, 62320⁰, 62321⁰, 62322⁰, 62323⁰, 62324⁰, 62325⁰, 62326⁰, 62327⁰, 64400⁰, 64405⁰, 64408⁰, 64415⁰, 64416⁰, 64417⁰, 64418⁰, 64420⁰, 64421⁰, 64425⁰, 64430⁰, 64435⁰, 64445⁰, 64446⁰, 64447⁰, 64448⁰, 64449⁰, 64450⁰, 64451⁰, 64454⁰, 64461⁰, 64462⁰, 64463⁰, 64479⁰, 64480⁰, 64483⁰, 64484⁰, 64486⁰, 64487⁰, 64488⁰, 64489⁰, 64490⁰, 64491⁰, 64492⁰, 64493⁰, 64494⁰, 64495⁰, 64505⁰, 64510⁰, 64517⁰, 64520⁰, 64530⁰, 69990⁰, 76000¹, 77001¹, 77002¹, 92012¹, 92014¹, 93000¹, 93005¹, 93010¹, 93040¹, 93041¹, 93042¹, 93318¹, 93355¹, 94002¹, 94200¹, 94680¹, 94681¹, 94690¹, 95812¹, 95813¹, 95816¹, 95819¹, 95822¹, 95829¹,

Clinical Responsibility

When the patient is appropriately prepped and anesthetized, the provider creates a small opening in the skin over the affected vein. He then inserts a guidewire under imaging guidance and passes it through the vein to the target location. Over the guide wire he then inserts a hollow tube, known as a sheath. He then removes the guidewire. Next, the provider passes the chemical adhesive, such as cyanoacrylate, in measured doses to the target location through the inside of the sheath. After completion of procedure, the provider pulls back the probe and sheath. At last he irrigates the puncture site and applies pressure to control the bleeding. The chemical adhesive ablates the vein by closing off its lumen, the interior, open area of the vessel. This code includes all imaging guidance and monitoring.

Coding Tips

For each additional vein treated through a separate incision on the same extremity, report +36483.

There are many other techniques for treating incompetent veins.

For treatment of incompetent veins by injection of sclerosant (solution), see 36468 (for spider veins) and 36470 and 36471 (veins other than spider veins, single and multiple respectively).

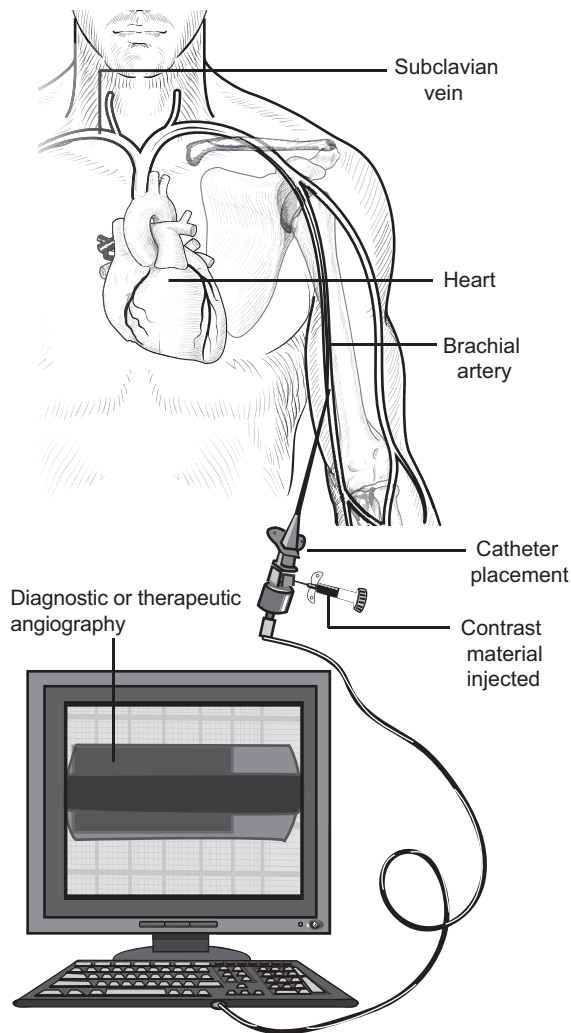
For mechanochemical endovenous ablation, see 36473 and +36474 (initial and subsequent, separate access, same extremity).

For radiofrequency endovenous ablation, see 36475 and +36476 (initial and subsequent, separate access, same extremity).

For laser endovenous ablation, see 36478 and +36479 (initial and subsequent, separate access, same extremity).

For injection of non-compounded foam sclerosant, see 36465 and 36466 (single vs multiple, single extremity).

Illustration



75898

75625¹, 75630¹, 75635¹, 75705¹, 75710¹, 75716¹, 75726¹, 75731¹, 75733¹, 75736¹, 75741¹, 75743¹, 75746¹, 75756¹, 75774¹, 75810¹, 75820¹, 75822¹, 75825¹, 75827¹, 75831¹, 75833¹, 75840¹, 75842¹, 75860¹, 75870¹, 75872¹, 75880¹, 75885¹, 75887¹, 75889¹, 75891¹, 75893¹, 76000¹, 76942¹, 76998¹, 77001¹, 77002¹, 96360¹, 96365¹, 96372¹, 96374¹, 96375¹, 96376¹, 96377¹, 96523⁰, 99446¹, 99447¹, 99448¹, 99449¹, 99451¹, 99452¹

ICD-10 CrossRef

C22.0-C22.2, C22.7, C26.9, C38.1, C38.2, C38.8, C39.9, C45.1, C48.0-C48.8, C57.4, C71.8, C71.9, C72.0, C72.1, C76.1-C76.3, C76.40-C76.42, C76.50-C76.52, C78.1, C78.6, C79.31, C79.49, C79.70-C79.72, C7A.091-C7A.096, C7A.095, C7A.096, C7B.01, C7B.04, D15.0, D15.2, D18.02, D18.03, D18.09, D19.1, D20.0, D20.1, D32.1, D33.4, D35.6, D3A.094-D3A.096, D49.7, I60.00-I60.02, I60.10-I60.12, I60.30-I60.32, I60.4-I60.9, I60.50-I60.52, I60.8, I60.9, I61.0-I61.9, I62.00-I62.03, I62.1, I62.9, I67.1, I72.0-I72.3, I72.8, I72.9, I87.2, Q24.5, Q25.0, Q25.79, Q26.5, Q26.6, Q27.1, Q27.2, Q27.30-Q27.39, Q27.8, Q27.9, Q28.0-Q28.3, Q28.9, S06.5X0A, S15.001A, S15.002A, S15.009A, S15.011A, S15.012A, S15.019A, S15.021A, S15.022A, S15.029A, S15.091A, S15.092A, S15.099A, S45.001A, S45.002A, S45.009A, S45.011A, S45.012A, S45.019A, S45.091A, S45.092A, S45.099A, S55.001A, S55.002A, S55.009A, S55.011A, S55.012A, S55.019A, S55.091A, S55.092A, S55.099A, S65.001A, S65.002A, S65.009A, S65.011A, S65.012A, S65.019A, S65.091A, S65.092A, S65.099A, S85.001A, S85.002A, S85.009A, S85.011A, S85.012A, S85.019A, S85.091A, S85.092A, S85.099A, S85.501A, S85.502A, S85.509A, S85.511A, S85.512A, S85.519A, S85.591A, S85.592A, S85.599A, T79.2XXA, T80.211A, T80.212A, T80.22XA

75901

Mechanical removal of pericatheter obstructive material (eg, fibrin sheath) from central venous device via separate venous access, radiologic supervision and interpretation

Fee Schedule

Medicare Fees National Conversion Factor: 34.8931, Facility: \$0.00, Non Facility: \$0.00, OPSS Facility: \$2,894.03, OPSS Non Facility: \$2,894.03

RVU Facility Work RVU: 0.00, PE RVU: 0.00, Malpractice RVU: 0.00, Total RVU: 0.00

RVU Non-Facility Work RVU: 0.00, PE RVU: 0.00, Malpractice RVU: 0.00, Total RVU: 0.00

Indicators Preoperative: 0.00, Intraoperative: 0.00, Postoperative: 0.00, Total RVU: 0, Global Period: XXX, Radiology Diagnostic Test: 99, Code Status: C, PC/TC Indicator: 1, Endoscopic Base Code: None, MUE: 2

Modifier Allowances 22, 26, 52, 59, 76, 77, 79, 80, 81, 82, 99, AQ, AR, AS, CR, ET, GA, GC, GJ, GR, GY, GZ, KX, PD, Q5, Q6, QJ, TC, XE, XP, XS, XU

CCI Alerts (version 27.3)

01916⁰, 0632T¹, 35201¹, 35206¹, 35226¹, 35261¹, 35266¹, 35286¹, 36000¹, 36005¹, 36410¹, 36500¹, 36591⁰, 36592⁰, 75600¹, 75605¹,

Clinical Responsibility

When the patient is appropriately prepped and anesthetized, the provider makes a small incision into the access site, such as the groin or arm, and inserts a guide wire through a sheath into the vein. The provider then inserts a catheter via the guide wire into the vein and injects contrast into the blood vessels. He uses fluoroscopy to examine the blood vessels and provide imaging of the target site. The provider performing the surgical part of the procedure uses a device to break up and remove the obstruction. He then removes the catheter, checks for bleeding, and closes the site if needed. The provider who performs imaging supervision and interpretation for this procedure reports this code.

Coding Tips

The provider reporting the mechanical obstruction removal should report 36595.

For services paid under OPSS, Medicare does not pay hospitals separately for supervision and interpretation codes deemed to be ancillary and supportive services to primary diagnostic or

93015

Cardiovascular stress test using maximal or submaximal treadmill or bicycle exercise, continuous electrocardiographic monitoring, and/or pharmacological stress; with supervision, interpretation and report

Clinical Responsibility

The provider supervises the patient during exercises on a treadmill or a bicycle or administers a medication that increases the heart rate. He records blood pressure readings and monitors the electrocardiograph at regular intervals to analyze the electrical activity of the heart. The provider then interprets the data and reports any abnormality detected in the results.

Coding Tips

Code 93015 represents the technical and professional components of the service, so you should not append modifier 26, Professional component, or TC, Technical component.

To report the technical component only, the rendering provider should report 93017, Cardiovascular stress test using maximal or submaximal treadmill or bicycle exercise, continuous electrocardiographic monitoring, and or pharmacological stress, tracing only, without interpretation and report.

To report the professional component only, the rendering provider should report 93016, Cardiovascular stress test using maximal or submaximal treadmill or bicycle exercise, continuous electrocardiographic monitoring, and or pharmacological stress, supervision only, without interpretation and report, or 93018, Cardiovascular stress test using maximal or submaximal treadmill or bicycle exercise, continuous electrocardiographic monitoring, and or pharmacological stress, interpretation and report only.

Fee Schedule

Medicare Fees National Conversion Factor: 34.8931, Facility: \$71.88, Non Facility: \$71.88, OPPS Facility: \$26.17, OPPS Non Facility: \$26.17

RVU Facility Work RVU: 0.75, PE RVU: 1.26, Malpractice RVU: 0.05, Total RVU: 2.06

RVU Non-Facility Work RVU: 0.75, PE RVU: 1.26, Malpractice RVU: 0.05, Total RVU: 2.06

Indicators Preoperative: 0.00, Intraoperative: 0.00, Postoperative: 0.00, Total RVU: 0, Global Period: XXX, Radiology Diagnostic Test: 99, Code Status: A, PC/TC Indicator: 4, Endoscopic Base Code: None, MUE: 1

Modifier Allowances 22, 51, 52, 59, 76, 77, 79, 80, 81, 82, 99, AR, AS, CR, ET, GA, GC, GJ, GR, KX, PD, Q5, Q6, QJ, XE, XP, XS, XU

CCI Alerts (version 27.3)

36000¹, 36410¹, 36591⁰, 36592⁰, 93000¹, 93005¹, 93010¹, 93016⁰, 93017⁰, 93018⁰, 93040¹, 93041¹, 93042¹, 94619⁰, 94760⁰, 94761⁰, 96360¹, 96365¹, 96372¹, 96374¹, 96375¹, 96376¹, 96377¹, 96523⁰, 99202¹, 99203¹, 99204¹, 99205¹, 99211¹, 99212¹, 99213¹, 99214¹, 99215¹, 99217¹, 99218¹, 99219¹, 99220¹, 99221¹, 99222¹, 99223¹, 99231¹, 99232¹, 99233¹, 99234¹, 99235¹, 99236¹, 99241¹, 99242¹,

99243¹, 99244¹, 99245¹, 99251¹, 99252¹, 99253¹, 99254¹, 99255¹, 99455¹, 99456¹, 99460¹, 99461¹, 99462¹, 99463¹, 99464¹, 99465¹, 99466¹, 99468¹, 99469¹, 99471¹, 99472¹, 99475¹, 99476¹, 99477¹, 99478¹, 99479¹, 99480¹, 99483¹, 99485¹, 99497¹, G0463¹

ICD-10 CrossRef

I20.0, I21.09, I21.11, I21.19, I21.29, I21.3, I21.4, I21.9, I21.A1, I21.A9, I24.1-I24.9, I25.110, I25.700, I25.710, I25.720, I25.730, I25.750, I25.760, I25.790, I34.0-I34.9, I35.0-I35.9, I36.0-I36.9, I37.0-I37.9, I42.0-I42.9, I43, I44.0, I44.1, I44.30, I44.4, I44.5, I44.60, I44.69, I50.1, I50.20-I50.23, I50.30-I50.33, I50.40-I50.43, I50.810-I50.814, I50.82-I50.84, I50.89, I50.9, I70.0, I70.201-I70.209, I70.211-I70.219, I70.221-I70.229, I70.231-I70.239, I70.241-I70.249, I70.25, I70.261-I70.269, I70.90-I70.92, R00.0-R00.2, R06.02, R07.2, R07.89, R07.9, R10.13, R40.4, R42, R55, R61, R94.30-R94.39, T82.310A-T82.310S, T82.311A-T82.311S, T82.312A-T82.312S, T82.318A-T82.318S, T82.319A-T82.319S, T82.320A-T82.320S, T82.321A-T82.321S, T82.322A-T82.322S, T82.328A-T82.328S, T82.329A-T82.329S, T82.330A-T82.330S, T82.331A-T82.331S, T82.332A-T82.332S, T82.338A-T82.338S, T82.339A-T82.339S, T82.390A-T82.390S, T82.391A-T82.391S, T82.392A-T82.392S, T82.398A-T82.398S, T82.399A-T82.399S, T82.41XA-T82.41XS, T82.42XA-T82.42XS, T82.43XA-T82.43XS, T82.49XA-T82.49XS, T82.510A-T82.510S, T82.511A-T82.511S, T82.513A-T82.513S, T82.514A-T82.514S, T82.515A-T82.515S, T82.518A-T82.518S, T82.520A-T82.520S, T82.521A-T82.521S, T82.523A-T82.523S, T82.524A-T82.524S, T82.525A-T82.525S, T82.528A-T82.528S, T82.529A-T82.529S, T82.530A-T82.530S, T82.531A-T82.531S, T82.533A-T82.533S, T82.534A-T82.534S, T82.535A-T82.535S, T82.538A-T82.538S, T82.590A-T82.590S, T82.591A-T82.591S, T82.593A-T82.593S, T82.594A-T82.594S, T82.595A-T82.595S, T82.598A-T82.598S, T82.6XXA-T82.6XXS, T82.7XXA-T82.7XXS, T82.817A-T82.817S, T82.827A-T82.827S, T82.837A-T82.837S, T82.847A-T82.847S, T82.855A, T82.857A-T82.857S, T82.867A-T82.867S, T82.897A-T82.897S, T82.898A-T82.898S, T82.9XXA-T82.9XXS, T86.20-T86.23, Z05.0, Z13.6, Z82.49, Z86.74, Z86.79, Z95.1, Z95.5, Z95.810-Z95.818, Z98.61

93016

Cardiovascular stress test using maximal or submaximal treadmill or bicycle exercise, continuous electrocardiographic monitoring, and/or pharmacological stress; supervision only, without interpretation and report

Clinical Responsibility

The provider supervises the patient during exercises on a treadmill or a bicycle or administers a medication that increases the heart rate. He records blood pressure readings and monitors the electrocardiograph at regular intervals to analyze the electrical activity of the heart. He does not interpret the data or report his findings.

Coding Tips

Code 93016 represents the professional component of the service only, so you should not append modifier 26, Professional component, or TC, Technical component.

ICD-10 CrossRef Details

A01.00	Typhoid fever, unspecified	A38.9	Scarlet fever, uncomplicated
A01.01	Typhoid meningitis	A39.50	Meningococcal carditis, unspecified
A01.02	Typhoid fever with heart involvement	A39.51	Meningococcal endocarditis
A01.03	Typhoid pneumonia	A39.52	Meningococcal myocarditis
A01.04	Typhoid arthritis	A39.89	Other meningococcal infections
A01.05	Typhoid osteomyelitis	A39.9	Meningococcal infection, unspecified
A01.09	Typhoid fever with other complications	A40.0	Sepsis due to streptococcus, group A
A01.1	Paratyphoid fever A	A40.1	Sepsis due to streptococcus, group B
A01.2	Paratyphoid fever B	A40.3	Sepsis due to Streptococcus pneumoniae
A01.3	Paratyphoid fever C	A40.8	Other streptococcal sepsis
A01.4	Paratyphoid fever, unspecified	A40.9	Streptococcal sepsis, unspecified
A02.1	Salmonella sepsis	A41.01	Sepsis due to Methicillin susceptible Staphylococcus aureus
A02.20	Localized salmonella infection, unspecified	A41.02	Sepsis due to Methicillin resistant Staphylococcus aureus
A02.22	Salmonella pneumonia	A41.1	Sepsis due to other specified staphylococcus
A02.29	Salmonella with other localized infection	A41.2	Sepsis due to unspecified staphylococcus
A02.8	Other specified salmonella infections	A41.3	Sepsis due to Hemophilus influenzae
A02.9	Salmonella infection, unspecified	A41.4	Sepsis due to anaerobes
A04.0	Enteropathogenic Escherichia coli infection	A41.50	Gram-negative sepsis, unspecified
A04.1	Enterotoxigenic Escherichia coli infection	A41.51	Sepsis due to Escherichia coli [E. coli]
A04.2	Enteroinvasive Escherichia coli infection	A41.52	Sepsis due to Pseudomonas
A04.3	Enterohemorrhagic Escherichia coli infection	A41.53	Sepsis due to Serratia
A04.4	Other intestinal Escherichia coli infections	A41.59	Other Gram-negative sepsis
A04.8	Other specified bacterial intestinal infections	A41.81	Sepsis due to Enterococcus
A04.9	Bacterial intestinal infection, unspecified	A41.89	Other specified sepsis
A06.4	Amebic liver abscess	A41.9	Sepsis, unspecified organism
A06.89	Other amebic infections	A42.0	Pulmonary actinomycosis
A08.4	Viral intestinal infection, unspecified	A42.7	Actinomycotic sepsis
A08.8	Other specified intestinal infections	A43.0	Pulmonary nocardiosis
A15.0	Tuberculosis of lung	A43.1	Cutaneous nocardiosis
A15.4	Tuberculosis of intrathoracic lymph nodes	A43.8	Other forms of nocardiosis
A15.5	Tuberculosis of larynx, trachea and bronchus	A43.9	Nocardiosis, unspecified
A15.6	Tuberculous pleurisy	A48.2	Nonpneumonic Legionnaires' disease [Pontiac fever]
A15.8	Other respiratory tuberculosis	A48.3	Toxic shock syndrome
A18.11	Tuberculosis of kidney and ureter	A48.4	Brazilian purpuric fever
A18.84	Tuberculosis of heart	A49.01	Methicillin susceptible Staphylococcus aureus infection, unspecified site
A22.7	Anthrax sepsis	A49.02	Methicillin resistant Staphylococcus aureus infection, unspecified site
A25.9	Rat-bite fever, unspecified	A49.1	Streptococcal infection, unspecified site
A26.7	Erysipelothrix sepsis	A49.2	Hemophilus influenzae infection, unspecified site
A31.0	Pulmonary mycobacterial infection	A49.3	Mycoplasma infection, unspecified site
A31.1	Cutaneous mycobacterial infection	A49.8	Other bacterial infections of unspecified site
A31.8	Other mycobacterial infections	A49.9	Bacterial infection, unspecified
A31.9	Mycobacterial infection, unspecified	A50.04	Early congenital syphilitic pneumonia
A32.7	Listerial sepsis	A50.54	Late congenital cardiovascular syphilis
A36.0	Pharyngeal diphtheria	A52.00	Cardiovascular syphilis, unspecified
A36.1	Nasopharyngeal diphtheria	A52.01	Syphilitic aneurysm of aorta
A36.2	Laryngeal diphtheria	A52.02	Syphilitic aortitis
A36.81	Diphtheritic cardiomyopathy	A52.03	Syphilitic endocarditis
A36.84	Diphtheritic tubulo-interstitial nephropathy	A52.06	Other syphilitic heart involvement
A36.89	Other diphtheritic complications	A52.09	Other cardiovascular syphilis
A37.00	Whooping cough due to Bordetella pertussis without pneumonia	A52.12	Other cerebrospinal syphilis
A37.01	Whooping cough due to Bordetella pertussis with pneumonia	A52.15	Late syphilitic neuropathy
A37.10	Whooping cough due to Bordetella parapertussis without pneumonia	A52.19	Other symptomatic neurosyphilis
A37.11	Whooping cough due to Bordetella parapertussis with pneumonia	A52.75	Syphilis of kidney and ureter
A37.80	Whooping cough due to other Bordetella species without pneumonia	A54.00	Gonococcal infection of lower genitourinary tract, unspecified
A37.81	Whooping cough due to other Bordetella species with pneumonia	A54.21	Gonococcal infection of kidney and ureter
A37.90	Whooping cough, unspecified species without pneumonia	A54.29	Other gonococcal genitourinary infections
A37.91	Whooping cough, unspecified species with pneumonia	A54.40	Gonococcal infection of musculoskeletal system, unspecified
A38.0	Scarlet fever with otitis media	A54.49	Gonococcal infection of other musculoskeletal tissue
A38.1	Scarlet fever with myocarditis	A54.83	Gonococcal heart infection
A38.8	Scarlet fever with other complications	A54.84	Gonococcal pneumonia
		A54.86	Gonococcal sepsis
		A54.89	Other gonococcal infections
		A54.9	Gonococcal infection, unspecified

C13.0	Malignant neoplasm of postcricoid region	C26.1	Malignant neoplasm of spleen
C13.1	Malignant neoplasm of aryepiglottic fold, hypopharyngeal aspect	C26.9	Malignant neoplasm of ill-defined sites within the digestive system
C13.2	Malignant neoplasm of posterior wall of hypopharynx	C30.0	Malignant neoplasm of nasal cavity
C13.8	Malignant neoplasm of overlapping sites of hypopharynx	C30.1	Malignant neoplasm of middle ear
C13.9	Malignant neoplasm of hypopharynx, unspecified	C31.0	Malignant neoplasm of maxillary sinus
C14.0	Malignant neoplasm of pharynx, unspecified	C31.1	Malignant neoplasm of ethmoidal sinus
C14.2	Malignant neoplasm of Waldeyer's ring	C31.2	Malignant neoplasm of frontal sinus
C14.8	Malignant neoplasm of overlapping sites of lip, oral cavity and pharynx	C31.3	Malignant neoplasm of sphenoid sinus
C15.3	Malignant neoplasm of upper third of esophagus	C31.8	Malignant neoplasm of overlapping sites of accessory sinuses
C15.4	Malignant neoplasm of middle third of esophagus	C31.9	Malignant neoplasm of accessory sinus, unspecified
C15.5	Malignant neoplasm of lower third of esophagus	C32.0	Malignant neoplasm of glottis
C15.8	Malignant neoplasm of overlapping sites of esophagus	C32.1	Malignant neoplasm of supraglottis
C15.9	Malignant neoplasm of esophagus, unspecified	C32.2	Malignant neoplasm of subglottis
C16.0	Malignant neoplasm of cardia	C32.3	Malignant neoplasm of laryngeal cartilage
C16.1	Malignant neoplasm of fundus of stomach	C32.8	Malignant neoplasm of overlapping sites of larynx
C16.2	Malignant neoplasm of body of stomach	C32.9	Malignant neoplasm of larynx, unspecified
C16.3	Malignant neoplasm of pyloric antrum	C33	Malignant neoplasm of trachea
C16.4	Malignant neoplasm of pylorus	C34.00	Malignant neoplasm of unspecified main bronchus
C16.5	Malignant neoplasm of lesser curvature of stomach, unspecified	C34.01	Malignant neoplasm of right main bronchus
C16.6	Malignant neoplasm of greater curvature of stomach, unspecified	C34.02	Malignant neoplasm of left main bronchus
C16.8	Malignant neoplasm of overlapping sites of stomach	C34.10	Malignant neoplasm of upper lobe, unspecified bronchus or lung
C16.9	Malignant neoplasm of stomach, unspecified	C34.11	Malignant neoplasm of upper lobe, right bronchus or lung
C17.0	Malignant neoplasm of duodenum	C34.12	Malignant neoplasm of upper lobe, left bronchus or lung
C17.1	Malignant neoplasm of jejunum	C34.2	Malignant neoplasm of middle lobe, bronchus or lung
C17.2	Malignant neoplasm of ileum	C34.30	Malignant neoplasm of lower lobe, unspecified bronchus or lung
C17.3	Meckel's diverticulum, malignant	C34.31	Malignant neoplasm of lower lobe, right bronchus or lung
C17.8	Malignant neoplasm of overlapping sites of small intestine	C34.32	Malignant neoplasm of lower lobe, left bronchus or lung
C17.9	Malignant neoplasm of small intestine, unspecified	C34.80	Malignant neoplasm of overlapping sites of unspecified bronchus and lung
C18.0	Malignant neoplasm of cecum	C34.81	Malignant neoplasm of overlapping sites of right bronchus and lung
C18.1	Malignant neoplasm of appendix	C34.82	Malignant neoplasm of overlapping sites of left bronchus and lung
C18.2	Malignant neoplasm of ascending colon	C34.90	Malignant neoplasm of unspecified part of unspecified bronchus or lung
C18.3	Malignant neoplasm of hepatic flexure	C34.91	Malignant neoplasm of unspecified part of right bronchus or lung
C18.4	Malignant neoplasm of transverse colon	C34.92	Malignant neoplasm of unspecified part of left bronchus or lung
C18.5	Malignant neoplasm of splenic flexure	C37	Malignant neoplasm of thymus
C18.6	Malignant neoplasm of descending colon	C38.0	Malignant neoplasm of heart
C18.7	Malignant neoplasm of sigmoid colon	C38.1	Malignant neoplasm of anterior mediastinum
C18.8	Malignant neoplasm of overlapping sites of colon	C38.2	Malignant neoplasm of posterior mediastinum
C18.9	Malignant neoplasm of colon, unspecified	C38.3	Malignant neoplasm of mediastinum, part unspecified
C19	Malignant neoplasm of rectosigmoid junction	C38.4	Malignant neoplasm of pleura
C20	Malignant neoplasm of rectum	C38.8	Malignant neoplasm of overlapping sites of heart, mediastinum and pleura
C21.0	Malignant neoplasm of anus, unspecified	C39.9	Malignant neoplasm of lower respiratory tract, part unspecified
C21.1	Malignant neoplasm of anal canal	C40.00	Malignant neoplasm of scapula and long bones of unspecified upper limb
C21.2	Malignant neoplasm of cloacogenic zone	C40.01	Malignant neoplasm of scapula and long bones of right upper limb
C21.8	Malignant neoplasm of overlapping sites of rectum, anus and anal canal	C40.02	Malignant neoplasm of scapula and long bones of left upper limb
C22.0	Liver cell carcinoma	C40.10	Malignant neoplasm of short bones of unspecified upper limb
C22.1	Intrahepatic bile duct carcinoma	C40.11	Malignant neoplasm of short bones of right upper limb
C22.2	Hepatoblastoma	C40.12	Malignant neoplasm of short bones of left upper limb
C22.3	Angiosarcoma of liver	C40.20	Malignant neoplasm of long bones of unspecified lower limb
C22.4	Other sarcomas of liver	C40.21	Malignant neoplasm of long bones of right lower limb
C22.7	Other specified carcinomas of liver	C40.22	Malignant neoplasm of long bones of left lower limb
C22.8	Malignant neoplasm of liver, primary, unspecified as to type	C40.30	Malignant neoplasm of short bones of unspecified lower limb
C22.9	Malignant neoplasm of liver, not specified as primary or secondary	C40.31	Malignant neoplasm of short bones of right lower limb
C23	Malignant neoplasm of gallbladder	C40.32	Malignant neoplasm of short bones of left lower limb
C24.0	Malignant neoplasm of extrahepatic bile duct	C41.0	Malignant neoplasm of bones of skull and face
C24.1	Malignant neoplasm of ampulla of Vater	C41.1	Malignant neoplasm of mandible
C24.8	Malignant neoplasm of overlapping sites of biliary tract	C41.2	Malignant neoplasm of vertebral column
C24.9	Malignant neoplasm of biliary tract, unspecified	C41.3	Malignant neoplasm of ribs, sternum and clavicle
C25.0	Malignant neoplasm of head of pancreas		
C25.1	Malignant neoplasm of body of pancreas		
C25.2	Malignant neoplasm of tail of pancreas		
C25.3	Malignant neoplasm of pancreatic duct		
C25.4	Malignant neoplasm of endocrine pancreas		
C25.7	Malignant neoplasm of other parts of pancreas		
C25.8	Malignant neoplasm of overlapping sites of pancreas		
C25.9	Malignant neoplasm of pancreas, unspecified		
C26.0	Malignant neoplasm of intestinal tract, part unspecified		

Modifier Descriptors

Modifier	Description
CPT® Modifiers	
22	Increased Procedural Services
23	Unusual Anesthesia
24	Unrelated Evaluation and Management Service by the Same Physician or Other Qualified Health Care Professional During a Postoperative Period
25	Significant, Separately Identifiable Evaluation and Management Service by the Same Physician or Other Qualified Health Care Professional on the Same Day of the Procedure or Other Service
26	Professional Component
27	Multiple Outpatient Hospital E/M Encounters on the Same Date
32	Mandated Services
33	Preventive Services
47	Anesthesia by Surgeon
50	Bilateral Procedure
51	Multiple Procedures
52	Reduced Services
53	Discontinued Procedure
54	Surgical Care Only
55	Postoperative Management Only
56	Preoperative Management Only
57	Decision for Surgery
58	Staged or Related Procedure or Service by the Same Physician or Other Qualified Health Care Professional During the Postoperative Period
59	Distinct Procedural Service
62	Two Surgeons
63	Procedure Performed on Infants less than 4 kg
66	Surgical Team
73	Discontinued Out-Patient Hospital/Ambulatory Surgery Center (ASC) Procedure Prior to the Administration of Anesthesia
74	Discontinued Out-Patient Hospital/Ambulatory Surgery Center (ASC) Procedure After Administration of Anesthesia
76	Repeat Procedure or Service by Same Physician or Other Qualified Health Care Professional
77	Repeat Procedure by Another Physician or Other Qualified Health Care Professional
78	Unplanned Return to the Operating/Procedure Room by the Same Physician or Other Qualified Health Care Professional Following Initial Procedure for a Related Procedure During the Postoperative Period

Modifier	Description
79	Unrelated Procedure or Service by the Same Physician or Other Qualified Health Care Professional During the Postoperative Period
80	Assistant Surgeon
81	Minimum Assistant Surgeon
82	Assistant Surgeon (when qualified resident surgeon not available)
90	Reference (Outside) Laboratory
91	Repeat Clinical Diagnostic Laboratory Test
92	Alternative Laboratory Platform Testing
95	Synchronous Telemedicine Service Rendered Via a Real-Time Interactive Audio and Video Telecommunications System
96	Habilitative Services
97	Rehabilitative Services
99	Multiple Modifiers
Category II Modifiers	
1P	Performance Measure Exclusion Modifier due to Medical Reasons
2P	Performance Measure Exclusion Modifier due to Patient Reasons
3P	Performance Measure Exclusion Modifier due to System Reasons
8P	Performance Measure Reporting Modifier - Action Not Performed, Reason Not Otherwise Specified
HCPCS Level II Modifiers	
A1	Dressing for one wound
A2	Dressing for two wounds
A3	Dressing for three wounds
A4	Dressing for four wounds
A5	Dressing for five wounds
A6	Dressing for six wounds
A7	Dressing for seven wounds
A8	Dressing for eight wounds
A9	Dressing for nine or more wounds
AA	Anesthesia services performed personally by anesthesiologist
AD	Medical supervision by a physician: more than four concurrent anesthesia procedures
AE	Registered dietician
AF	Specialty physician
AG	Primary physician
AH	Clinical psychologist
AI	Principal physician of record

Modifier	Description
GM	Multiple patients on one ambulance trip
GN	Services delivered under an outpatient speech language pathology plan of care
GO	Services delivered under an outpatient occupational therapy plan of care
GP	Services delivered under an outpatient physical therapy plan of care
GQ	Via asynchronous telecommunications system
GR	This service was performed in whole or in part by a resident in a department of veterans affairs medical center or clinic, supervised in accordance with VA policy
GS	Dosage of erythropoietin stimulating agent has been reduced and maintained in response to hematocrit or hemoglobin level
GT	Via interactive audio and video telecommunication systems
GU	Waiver of liability statement issued as required by payer policy, routine notice
GV	Attending physician not employed or paid under arrangement by the patient's hospice provider
GW	Service not related to the hospice patient's terminal condition
GX	Notice of liability issued, voluntary under payer policy
GY	Item or service statutorily excluded, does not meet the definition of any Medicare benefit or, for Non-Medicare insurers, is not a contract benefit
GZ	Item or service expected to be denied as not reasonable and necessary
H9	Court-ordered
HA	Child/adolescent program
HB	Adult program, non-geriatric
HC	Adult program, geriatric
HD	Pregnant/parenting women's program
HE	Mental health program
HF	Substance abuse program
HG	Opioid addiction treatment program
HH	Integrated mental health/substance abuse program
HI	Integrated mental health and intellectual disability/developmental disabilities program
HJ	Employee assistance program
HK	Specialized mental health programs for high-risk populations
HL	Intern
HM	Less than bachelor degree level
HN	Bachelor's degree level
HO	Master's degree level
HP	Doctoral level

Modifier	Description
HQ	Group setting
HR	Family/couple with client present
HS	Family/couple without client present
HT	Multi-disciplinary team
HU	Funded by child welfare agency
HV	Funded state addictions agency
HW	Funded by state mental health agency
HX	Funded by county/local agency
HY	Funded by juvenile justice agency
HZ	Funded by criminal justice agency
J1	Competitive acquisition program no-pay submission for a prescription number
J2	Competitive acquisition program, restocking of emergency drugs after emergency administration
J3	Competitive acquisition program (CAP), drug not available through cap as written, reimbursed under average sales price methodology
J4	DMEPOS item subject to DMEPOS competitive bidding program that is furnished by a hospital upon discharge
J5	Off-the-shelf orthotic subject to DMEPOS competitive bidding program that is furnished as part of a physical therapist or occupational therapist professional service
JA	Administered intravenously
JB	Administered subcutaneously
JC	Skin substitute used as a graft
JD	Skin substitute not used as a graft
JE	Administered via dialysate
JG	Drug or biological acquired with 340b drug pricing program discount
JW	Drug amount discarded/not administered to any patient
K0	Lower extremity prosthesis functional level 0 - does not have the ability or potential to ambulate or transfer safely with or without assistance and a prosthesis does not enhance their quality of life or mobility
K1	Lower extremity prosthesis functional level 1 - has the ability or potential to use a prosthesis for transfers or ambulation on level surfaces at fixed cadence, typical of the limited and unlimited household ambulator
K2	Lower extremity prosthesis functional level 2 - has the ability or potential for ambulation with the ability to traverse low level environmental barriers such as curbs, stairs or uneven surfaces, typical of the limited community ambulator

Terminology

Terminology	Explanation
Abbe Estlander operation	Transfer of a full thickness section of one lip to the other lip ensuring survival of the graft.
Abdominal aorta	Largest artery that supplies the abdominal cavity, part of the aorta and a continuation of the descending aorta from the thorax; it divides further into iliac arteries, which supply blood to the abdominal wall, pelvis, and lower extremities.
Abdominal aortic aneurysm, or AAA	Widening of the abdominal aorta due to weakening in the wall of the aorta.
Abdominal ultrasound	This is a noninvasive technique which uses sound wave to take images of the intra-abdominal structures (i.e. liver, gallbladder, pancreas, bile ducts, spleen, and abdominal aorta).
Ablation	Removal of tissue, a body part, or an organ or destruction of its function.
Abscess	A collection of pus in a walled off sac or pocket, the result of infection.
Acute	A medical condition or injury of sudden onset, sometimes severe in nature, and typically last a short period of time; opposite of chronic.
Acute respiratory distress syndrome, or ARDS	A buildup of fluid, or an inflammation, in the lungs due to trauma or disease.
Adhesions	Fibrous bands, which typically result from inflammation or injury during surgery that form between tissues and organs; they may be thought of as internal scar tissue.
Adrenal glands	A small endocrine gland found on top of the kidney that secretes hormones into the blood.
Adrenal veins	Veins branching off of the left or right adrenal gland.
Advance directive	A document which enables a person to make provision for his health care decisions in case if in the future, he becomes unable to make those decisions; include documents such as a living will and a medical power of attorney.
Advanced life support	Emergency prehospital services that use invasive medical actions, such as administration of intravenous fluids or drugs, intubation, and cardioversion or defibrillation.
Adventitia	The outermost layer or covering of a vessel or organ.
Air cuff	An inflatable band worn around an extremity to regulate the flow of blood.
Algorithm	A specific set of step-by-step calculations using defined inputs at each step to produce a useful output.
Amniotic cavity	Sac filled with amniotic fluid where the fetus develops.
Amplification	Making more copies of desired gene for study by processes such as polymerase chain reaction, called PCR, or transcription of DNA to RNA and reverse transcription from RNA to make an additional copy of the DNA.
Anastomosis	Connection between two structures, anatomical or surgically created, such as between two blood vessels or the colon after resection of a part; types of anastomoses include end to side and side to side.
Aneurysm	Weakness in the wall of a blood vessel or wall of a ventricle of the heart, typically the left ventricle, causing the wall to balloon out; sometimes requiring surgical excision or repair to prevent rupture.
Angioaccess	A group of procedures in which a vascular provider places a catheter, shunt, or graft in the patient's arm or neck for easy access the blood vessels to perform procedures such as hemodialysis.
Angiogram	A general term for radiographic images of arteries or veins following the administration of a contrast material; more specific terms include aortogram, arteriogram, and venogram.
Angiography	Imaging of internal organs including blood vessels, arteries, veins, and heart chambers.
Angioplasty	A surgical procedure to widen a narrowed or blocked artery.
Angioscope	Fiberoptic catheter for viewing the lumen, or interior, of a blood vessel.
Antegrade	That which occurs in the normal direction or flow.
Anterior	Closer to the front part of the body.
Anterior tibial artery	Smaller anterior artery that passes between the tibia and fibula, descends in the anterior portion of the leg, and continues beyond the ankle joint into the foot as the dorsalis pedis artery.
Antibiotic	Substance that inhibits infection.
Anticoagulant drug	A drug that causes a delay in clotting of blood, thus preventing the chances of myocardial infarction, stroke, blood clot in the brain, or deep vein thrombosis.

Terminology	Explanation
Cardiopulmonary insufficiency	Interrupted blood circulation in the heart and pulmonary vessels that leads to decreased oxygen saturation in blood.
Cardiothoracic surgery	Surgical treatment of conditions of the heart and lungs.
Cardiovascular disease	Group of diseases that involve heart, and blood vessels i.e., the arteries, veins, and capillaries.
Cardioversion	Medical procedure to convert an abnormal heart rate or rhythm to normal using electric shock or drugs.
Carotid arteries	Major blood vessels in the neck that supply blood to the brain, neck, and face.
Carotid vessel	Vein or artery in the neck.
Catheter	A flexible tube that can be inserted into a vessel through which instruments can be passed, blood withdrawn, or fluids instilled; a flexible tube inserted into a tubular structure such as the urethra to instill fluids, allow passage of urine, or examine the urethra and bladder.
Catheterization	The process of inserting a catheter.
Cauterize	To burn tissue with heat or a chemical.
Caval wall	The inner wall of the inferior vena cava.
Celiac artery	An artery that has its origin in the abdominal aorta.
Celiac trunk	A vascular structure that originates from the abdominal aorta and gives three branches, the splenic artery, the left gastric artery, and the common hepatic artery.
Central venous	Situated or occurring within the large vein of the heart or in the right atrium of the heart.
Central venous access device	A catheter a provider inserts into large veins; internal jugular vein in the neck, subclavian vein in the chest, or femoral vein in the groin.
Central venous catheter (CVC)	A device inserted percutaneously, through the skin, with a needle into the jugular, subclavian, or femoral vein, and sometimes into the inferior vena cava, to draw blood or administer medication, nutrients, or both.
Central venous device	Often referred to as a venous access port or catheter; placement is usually in large veins, typically used in patients that need frequent administration of drugs for the chronic conditions; the tip of the device ends in the subclavian vein, innominate vein, iliac vein, the superior vena cava, the inferior vena cava, or the heart's right atrium.
Centrifugation	Process that rotates a mixture around a fixed axis at a high speed to separate it into its constituents.
Cephalic vein	A major vein of the arm and forearm that carries blood from the hand to the shoulder.
Cerebral artery	One of the arteries that supply the cerebral hemispheres, or the two halves of the brain.
Cerebrospinal fluid (CSF)	A clear serumlike fluid that circulates in the ventricles of the brain and around the surface of the brain and spinal cord; it helps maintain uniform pressure within the spinal cord and brain.
Cerebrovascular	Refers to the blood vessels that supply the brain.
Cerebrovascular disease	Group of diseases characterized by improper circulation of blood into the brain.
Cervical carotid artery	Artery of the neck which supplies the neck, scapula, and shoulder blade.
Cervical spine	Neck, containing vertebrae enumerated C1 through C7.
Cervicocerebral arch	the area of the aorta above the heart where the great vessels branch off to feed the head and the upper extremities.
Cervix	Fleshy end of the uterus that juts into the vaginal canal, which consists of an outer opening, called the exocervix or ectocervix, middle section, called the transformation zone, where the squamous and columnar cells meet, and inner portion that opens into the body of the uterus, called the endocervix; menstrual blood passes from the uterine lining into the cervix and out into the vaginal canal.
Chemotherapy	Cancer treatment using chemical agents and drugs.
Chronic	A condition that is long lasting, typically to slow develop, and with symptoms of less severity than an acute condition.
Claudication	A condition characterized by leg pain and cramping, especially in the calf that occurs the muscles of the legs do get enough blood and oxygen when they are working harder, such as during exercise or walking; when severe, claudication may occur even when at rest; also called peripheral artery disease or PAD and peripheral vascular disease or PVD.
Clavicle	A long bone present on either side of neck that links the upper limb to the thorax; it is also called the collarbone and is the only horizontal long bone in the body.

Code Index

Codes	Page No.	Codes	Page No.	Codes	Page No.	Codes	Page No.	Codes	Page No.
0075T	704	10011	11	33952	45	34701	77	35021	112
+0076T	704	+10012	12	33953	46	34702	78	35022	112
0234T	705	10021	13	33954	47	34703	79	35045	113
0235T	705	15860	15	33955	48	34704	80	35081	114
0236T	706	33016	16	33956	49	34705	81	35082	115
0237T	707	33017	16	33957	50	34706	82	35091	116
0238T	707	33018	17	33958	51	34707	82	35092	116
0263T	708	33019	18	33959	52	34708	83	35102	117
0264T	708	33270	19	33962	53	+34709	84	35103	118
0265T	709	33271	20	33963	54	34710	85	35111	119
0338T	710	33272	21	33964	54	+34711	86	35112	120
0339T	710	33273	21	33965	55	34712	86	35121	121
0408T	711	33340	22	33966	56	+34713	87	35122	122
0409T	712	33361	23	33969	57	+34714	88	35131	122
0410T	713	33362	24	33984	58	+34715	88	35132	123
0411T	714	33363	24	33985	58	+34716	89	35141	124
0412T	715	33364	25	33986	59	+34717	90	35142	124
0413T	715	33365	26	+33987	60	34718	91	35151	125
0414T	716	33366	27	33988	60	+34808	92	35152	126
0415T	717	+33367	28	33989	61	+34812	93	35180	127
0416T	718	+33368	28	33990	62	+34813	93	35182	127
0417T	719	+33369	29	33991	63	+34820	94	35184	128
0418T	719	33390	29	33992	63	34830	94	35188	128
+0439T	720	33391	30	33993	64	34831	96	35189	129
0620T	720	33418	31	34001	65	34832	97	35190	130
0643T	721	+33419	32	34051	65	+34833	98	35201	131
0644T	722	33858	32	34101	66	+34834	99	35206	132
0645T	722	33859	33	34111	67	34839	99	35207	133
0646T	723	33871	34	34151	68	34841	100	35211	134
0659T	724	33880	35	34201	68	34842	101	35216	135
0710T	724	33881	36	34203	69	34843	102	35221	136
0711T	725	33883	37	34401	70	34844	103	35226	136
0712T	726	+33884	38	34421	70	34845	104	35231	137
0713T	726	33886	38	34451	71	34846	105	35236	138
+10004	5	33889	40	34471	72	34847	106	35241	139
10005	5	33891	41	34490	73	34848	107	35246	140
+10006	6	33946	42	34501	74	35001	108	35251	140
10007	7	33947	43	34502	75	35002	109	35256	141
+10008	8	33948	43	34510	75	35005	109	35261	142
10009	9	33949	44	34520	76	35011	110	35266	143
+10010	10	33951	44	34530	77	35013	111	35271	144

Thank You for Your Contribution to the Hardship Fund



Thanks to your book purchase, AAPC will be able to help even more members who face financial difficulty through the Hardship Fund.

The Hardship Fund is a financial aid program created to assist our members with:

- ✓ **Maintaining their membership and certification through membership renewal dues, exam prep tools and more**
- ✓ **Registration for national or regional conferences**
- ✓ **Certain local chapter events**

All awards are based on the availability of funds and the applicant's ability to demonstrate reasonable hardship. A portion of each book sale goes to helping more applicants through their time of need. We appreciate your contribution and your support for your fellow AAPC members.

To learn more about the Hardship Fund and its efforts or apply for financial assistance, **visit [aapc.com](https://www.aapc.com)**.



2024 Coders' Specialty Guide
Vascular Surgery



ISBN: 978-1-646319-428

eBook ISBN: 978-1-646319-640