



Helping our members in need

Your purchase of this book supports
the AAPCCA Member Hardship Fund.



Procedural Coding

EXPERT

CPT® Codes & More for Medicare Coders

A collection of various geometric shapes including squares, circles, triangles, and diamonds, some solid and some dashed, arranged in a pattern on the left side of the cover.

2027

Table of Contents

Introduction

- Features, Symbols, and Conventions3

Instructions for Using This Code Book..... 4

Anatomical Illustrations..... 5

Index 39

AMA Official Evaluation and Management (E/M) Services Guidelines..... 315

Code Chapters 329

- Evaluation and Management Services.....329
- Anesthesia.....357
- Surgery
 - Surgery/General Surgical Procedures...373
 - Surgery/Integumentary System.....375
 - Surgery/Musculoskeletal System419
 - Surgery/Respiratory System567
 - Surgery/Cardiovascular System.....591
 - Surgery/Hemic and Lymphatic Systems661
 - Surgery/Mediastinum and Diaphragm...667
 - Surgery/Digestive System669
 - Surgery/Urinary System737
 - Surgery/Male Genital System.....763
 - Surgery/Reproductive System.....775
 - Surgery/Intersex Surgery777
 - Surgery/Female Genital System779
 - Surgery/Maternity Care and Delivery797
 - Surgery/Endocrine System.....803
 - Surgery/Nervous System807
 - Surgery/Eye and Ocular Adnexa851
 - Surgery/Auditory System.....877
 - Surgery/Operating Microscope.....885
- Radiology Procedures887
- Pathology and Laboratory Procedures.....937
- Medicine Services and Procedures.....1087

- Category II Codes 1191
- Category III Codes 1211
- Multianalyte Assays.....1263

Appendices

- AMA Official Appendix A: Modifiers 1265
- AMA Official Appendix B: Summary of Additions, Deletions, and Revisions 1275
- AMA Official Appendix C and D: Clinical Examples and Summary of CPT® Add-on Codes 1285
- AMA Official Appendix E: Summary of CPT® Codes Exempt from Modifier 51 1289
- AMA Official Appendix F: Summary of CPT® Codes Exempt from Modifier 63.... 1291
- AMA Official Appendices G, H, and I..... 1293
- AMA Official Appendix J: Electrodiagnostic Medicine Listing of Sensory, Motor, and Mixed Nerves 1295
- AMA Official Appendix K: Product Pending FDA Approval 1299
- AMA Official Appendix L: Vascular Families 1301
- AMA Official Appendix M: Renumbered CPT® Codes–Citations Crosswalk 1313
- AMA Official Appendix N: Summary of Resequenced CPT® Codes..... 1319
- AMA Official Appendix O: Multianalyte Assays with Algorithmic Analyses and Proprietary Laboratory Analyses..... 1327
- AMA Official Appendix P: CPT® Codes That May Be Used for Synchronous Real-Time Interactive Audio-Video Telemedicine Services..... 1397
- AMA Official Appendix Q: Severe Acute Respiratory Syndrome Coronavirus 2 (SARS-CoV-2) (coronavirus disease [COVID-19]) Vaccines 1399
- AMA Official Appendix R: Digital Medicine–Services Taxonomy 1401

• AMA Official Appendix S: Artificial Intelligence Taxonomy for Medical Services and Procedures.....	1407	Telemedicine Services.....	1701
• AMA Official Appendix T: CPT® Codes That May Be Used for Synchronous Real-Time Interactive Audio-Only Telemedicine Services.....	1409	• AAPC Appendix Q: Anesthesia Modifiers.....	1703
• AAPC Appendix A: New, Revised, and Deleted Codes and Advice for 2027.....	1411	• AAPC Appendix R: Digital Medicine–Services Taxonomy.....	1705
• AAPC Appendix B: Crosswalks for Deleted Codes.....	1479	• AAPC Appendix S: Artificial Intelligence Taxonomy for Medical Services and Procedures.....	1709
• AAPC Appendix C: Inpatient-only Procedure Codes.....	1483	• AAPC Appendix T: CPT® Codes That May Be Used for Synchronous Real-Time Interactive Audio-only Telemedicine Services.....	1711
• AAPC Appendix D: CPT® Category II Modifiers.....	1487	• AAPC Appendix U: CPT® Modifiers, Definitions, and Tips.....	1713
• AAPC Appendix E: HCPCS Level II Modifiers, Definitions, and Tips.....	1489	• AAPC Appendix V: Evaluation and Management (E/M) Audit Worksheet.....	1725
• AAPC Appendix F: Resequenced CPT® Codes.....	1583		
• AAPC Appendix G: Vascular Families for Interventional Radiology Coding.....	1587		
• AAPC Appendix H: Modifier 51 Exempt, Modifier 63 Exempt, and Add-on Codes.....	1593		
• AAPC Appendix I: Trade Name and Generic Vaccinations Associated With CPT® Codes.....	1597		
• AAPC Appendix J: Place of Service/Type of Service.....	1603		
• AAPC Appendix K: Drug Class List.....	1607		
• AAPC Appendix L: APC Status Indicators.....	1637		
• AAPC Appendix M: ASC Payment Indicators.....	1639		
• AAPC Appendix N: Electrodiagnostic Medicine Listing of Sensory, Motor, and Mixed Nerves.....	1641		
• AAPC Appendix O: Multianalyte Assays With Algorithmic Analyses and Proprietary Laboratory Analyses.....	1645		
• AAPC Appendix P: CPT® Codes That May Be Used for Synchronous Real-Time Interactive Audio-Video			

Instructions for Using This Code Book

Index Format

You will find the index at the front of this code book, which contains procedures and services and their corresponding CPT® codes. The index arranges main terms alphabetically by procedure, service, body site, abbreviation, synonym, eponym, and some conditions. Main terms are listed in bold. Subterms, which modify main terms, are indented underneath main terms. You may also find additional modifying subterms indented under other subterms.

Each main term can stand alone or have modifying subterms. There are four types of main terms that you will find in the index:

1. **Procedure or service**
Examples: repair, anesthesia, endoscopy
2. **Organ or anatomic site**
Examples: acetabulum, fibula, tibia
3. **Condition or diagnosis**
Examples: tumor, abscess, tetralogy of Fallot
4. **Abbreviations, synonyms, eponyms**
Examples: CT scan, CPK, EEG, phalanx, Frickman proctopexy

You may find a code in the index many different ways. If you search under the procedure as the main term but don't find a code, then search for the body site instead. If you search for an abbreviation, such as EGD, and don't find a code, then search for the complete term, such as esophagogastroduodenoscopy.

Before searching for a main term in the index, find the procedure or service in the patient's medical documentation. Then search for the main term that best describes the procedure or service, anatomic site, condition, abbreviation, synonym, or eponym. Also review any subterms that modify main terms to find the correct code.

Code Options

When you find codes in the index, you will see the following choices:

- **One code** – cross-reference the code to the code chapter
- **Multiple codes separated by commas** – cross-reference each code to the code chapters
- **Code range(s) separated by a hyphen** – cross-reference each code in the range to the code chapters
- **Multiple codes separated by commas and a code range(s) separated by a hyphen** – cross-reference each code separated by a comma and each code in the code range to the code chapters

“See” Cross-Reference

You may also find the cross-reference “See” followed by one or more main terms. This cross-reference means that you are in the wrong place to find the procedure you are searching for, and you must look elsewhere.

For example, if you search for the main term Bowel you will not find a code. Instead, you find the cross-reference to See Intestines.

“See Also” Cross-Reference

You may also find the cross-reference “See Also” followed by one or more main terms. The “See Also” cross-reference means that you can also check the alternate main terms listed to find the service or procedure code.

Code Chapters/Sections

This code book contains the following chapters, or sections, where you will cross-reference all of the Category I CPT® codes that you find in the index. These five-digit codes are arranged in numeric order, starting with zero, except for the first chapter, which contains Evaluation and Management codes, which start with 9:

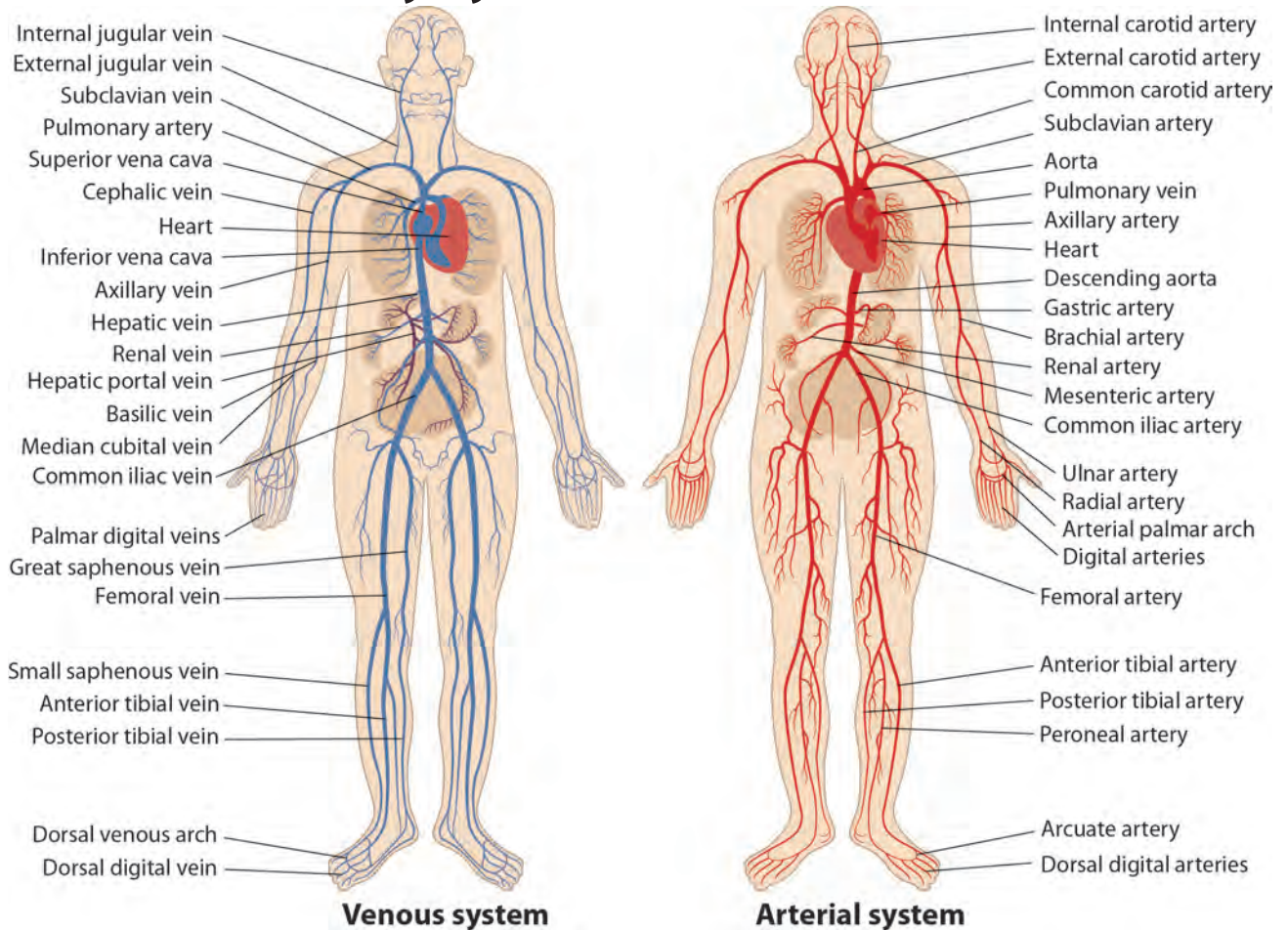
- **Evaluation and Management**
- **Anesthesia**
- **Surgery**
- **Radiology**
- **Pathology and Laboratory**
- **Medicine**

The book also contains these additional codes:

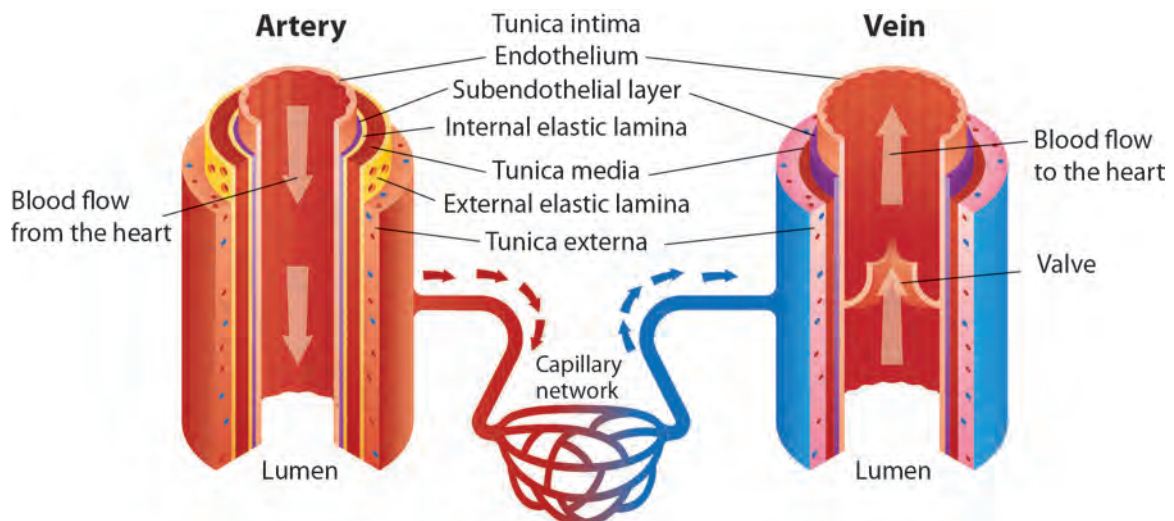
- **Category II Codes** – used for statistics and tracking; four digits ending with F
- **Category III Codes** – used for new and experimental technology; four digits ending with T
- **Multianalyte Assays with Algorithmic Analyses**
- **Administrative Codes** – used as an administrative coding set for accurate reporting of MAAA services; four digits ending with M
- **Proprietary Laboratory Analyses** – used for pathology and laboratory proprietary lab services; four digits ending with U

Anatomical Illustrations

Circulatory System — Arteries and Veins

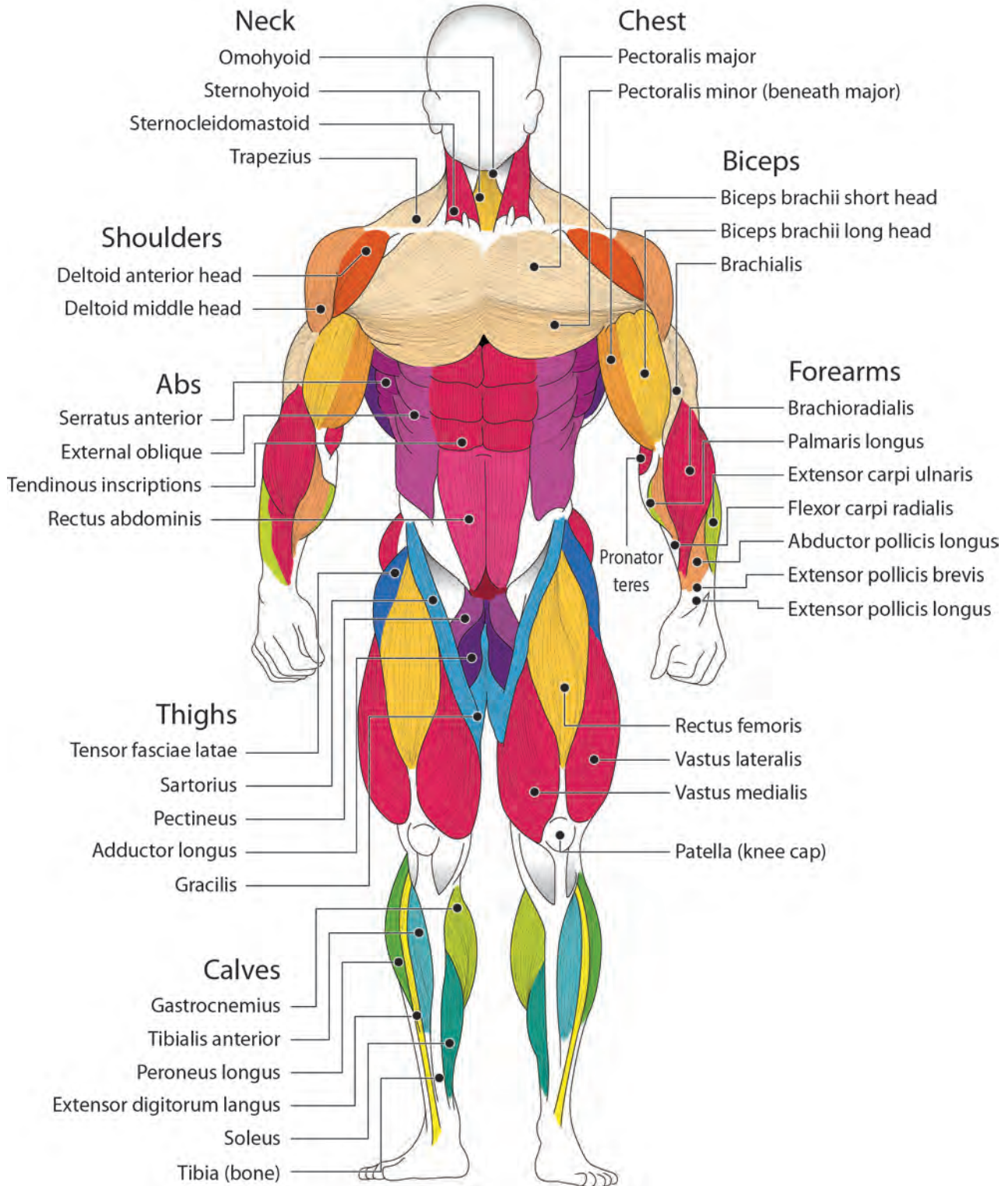


Circulatory System — Artery and Vein Anatomy



Musculoskeletal System — Musculature Anatomy

FRONT VIEW



Index

3D Predict Glioma 0248U

3D Predict™ Ovarian 0525U

A

A (Vitamin A) 84590

A-II (Angiotensin II) 82163

Ab Externo Trabeculectomy (AET) 65850

Ab Interno Trabeculectomy 0621T, 0622T

Abbe-Estlander Reconstruction Procedure

- Lip Excision 40527
- Plastic Repair With Sectioning and Inserting Pedicle 40761

Abbott Alinity™ m HSV 1 & 2 / VZV Assay 0527U

Abbott Alinity™ STI Assay 0402U

Abdomen or Abdominal

- Abscess Incision and Drainage
 - Peritoneal 49020
 - Retroperitoneal 49060
 - Subphrenic 49040
- Anesthesia, **See** Anesthesia, Abdomen
- Angiography
 - CT With Contrast Material 74174, 74175, 75635
 - Magnetic Resonance (MRA) 74185
- Aorta
 - Angiography 75635
 - Aortography 75625, 75630
 - Endovascular Repair 33894, 33895
 - Thromboendarterectomy 35331
- Aortic Aneurysm
 - Endovascular 34701-34708
 - Device Placement 34808
 - Open Repair 34832, 34841-34848, 35081-35103
 - Prosthesis or Graft 34813, 34820, 34709-34711
 - Exposure 34812
 - Infrarenal Repair 34830, 34831, 34832
 - Open Exposure 34833, 34834
 - Screening Ultrasound 76706
- Biopsy During Exploratory Laparotomy 49000
- Blood Vessel Repair
 - Direct 35221
 - With Graft 35281
 - With Vein Graft 35251
- Bypass Graft Removal (Infected) 35907
- Catheter (Tunneled) Removal 49422
- Celiotomy, **See** Laparotomy
- Cesarean Section Delivery
 - Delivery Only 59514, 59620
 - Delivery With Postpartum Care 59515, 59622
 - Routine Obstetric Care 59510, 59618
 - With Hysterectomy 59525
 - With Tubal Ligation 58611

- CT Scan
 - With Contrast 74160, 74174, 74175, 74177, 75635
 - Without Contrast 74150, 74170, 74176, 74178
- Drainage
 - Paracentesis
 - With Imaging Guidance 49083
 - Without Imaging Guidance 49082
 - Peripancreatic 48000
 - Skin and Subcutaneous Tissue 10060, 10061
- Ectopic Pregnancy, Surgical Treatment 59130
- Excision/Destruction
 - Cyst
 - 5 cm or Less 49186
 - 5.1-10 cm 49187
 - 10.1-20 cm 49188
 - 20.1-30 cm 49189
 - Greater Than 30 cm 49190
 - Tumor
 - Intra-abdominal
 - 5 cm or Less 49186
 - 5.1-10 cm 49187
 - 10.1-20 cm 49188
 - 20.1-30 cm 49189
 - Greater Than 30 cm 49190
 - Radical Resection
 - 5 cm and Greater 22905
 - Less Than 5 cm 22904
 - Subcutaneous (Abdominal Wall)
 - 3 cm and Greater 22903
 - Less Than 3 cm 22902
 - Subfascial (Abdominal Wall)
 - 5 cm and Greater 22901
 - Less Than 5 cm 22900
- Exploration
 - Post-operative Hemorrhage 35840
 - Preperitoneal Pelvic Packing 49013, 49014
 - Reopening of Recent Laparotomy 49010
 - Staging/Restaging 58960
 - With or Without Biopsy 49000
- Fascia Reinforcement With Nonbiologic or Synthetic Implant 0437T
- Hernia Repair
 - Epigastric 49591-49596, 49613-49618
 - Inguinal
 - 5 Years or Older 49505, 49507, 49520, 49521, 49525
 - Laparoscopic 49650, 49651
 - 6 Months to Less Than 5 Years 49500, 49501
 - Less Than 6 Months of Age 49491, 49492, 49495, 49496
 - Omphalocele 49600, 49605, 49606, 49610, 49611
 - Removal, Mesh or Prosthesis 49623
 - Spigelian 49591-49596, 49613-49618
 - Umbilical 49591-49596, 49613-49618
 - Ventral or Incisional 49591-49596, 49613-49618

- Hysterectomy (With or Without Salpingo-oophorectomy)
 - Radical 58210
 - Supracervical 58180
 - Total (TAH) 58150
 - Colpourethrocytostomy 58152
 - Omentectomy 58956
 - Partial Vaginectomy 58200
 - With Resection of Ovarian Malignancy 58951, 58953, 58954, 58956
- Implantation, Mesh or Prosthesis 15778, 49591-49596, 49613-49618
- Incision Procedures, **See Also** Laparotomy
 - Drainage 49020, 49040, 49060, 49062
 - Exploration 49000, 49010
 - Paracentesis 49082, 49083
 - Peritoneal Lavage 49084
 - Reopening, Recent 49002
 - With or Without Omentectomy 58960
 - Injection, Air or Contrast Material 49400
- Intraperitoneal
 - Tunneled Catheter
 - Exit Site 49436
 - Insertion 49418, 49419, 49421, 49435
 - Removal 49422
 - Revision 49325
 - Venous Shunt
 - Insertion 49425
 - Ligation 49428
 - Removal 49429
 - Revision 49426
- Laparoscopy
 - Surgical 49321, 49322, 49323, 49324, 49325, 49326, 49327
 - Unlisted Procedure 49329
 - Without Treatment 49320
- Laparotomy, **See Also** Exploratory Laparotomy, Abdomen
 - Reopening, Recent 49002
 - Staging 58960
- Ligation, Artery 37617
- Lymphangiogram/Lymphangiography 75805, 75807
- Injection 38790
- Magnetic Resonance Imaging (MRI)
 - With Contrast Material 74182
 - Without Contrast Material 74181
 - Followed With Contrast Material 74183
- Needle Biopsy (Percutaneous) 49180
- Nonbiologic or Synthetic Implant 0437T
- Panniculectomy, Infraumbilical 15830
- Paracentesis
 - With Imaging Guidance 49083
 - Without Imaging Guidance 49082
- Pelvic Exenteration (Radical Resection) 51597
- Peritoneal Venous Shunt Revision 49426
- Radiation Therapy Guidance Device
 - Placement 49411, 49412
- Radiography/Imaging
 - CT 74150-74178
 - MRI 74181, 74182, 74183, 74185
 - Peritoneogram 74190
 - Ultrasound 76700, 76705

HIV-1, Antibody 86701, 86703, 87389, 87806
 HIV-2 86702
 HIV-2, Antibody 86702, 86703, 87389, 87806
 HIV-1 and HIV-2, Single Result 86703
 HTLV or HIV 86689
 HTLV-I, Antibody 86687, 86689
 HTLV-II, Antibody 86688
 Immunoassay, Infectious Agent Antibody Not Otherwise Specified (NOS) Qualitative or Semiquantitative 86318 Quantitative 86317
 Influenza Virus, Antibody 86710
 JC (John Cunningham) Virus, Antibody 86711
 Legionella, Antibody 86713
 Leishmania, Antibody 86717
 Leptospira, Antibody 86720
 Listeria Monocytogenes 86723
 Lyme Disease, Antibody (Confirmatory Test) 86617
 Lymphocytic Choriomeningitis, Antibody 86727
 Mucormycosis, Antibody 86732
 Mumps, Antibody 86735
 Mycoplasma, Antibody 86738
 Neisseria Meningitidis, Antibody 86741
 Nocardia, Antibody 86744
 Parvovirus, Antibody 86747
 Plasmodium (Malaria), Antibody 86750
 Protozoa Not Otherwise Specified (NOS), Antibody 86753
 Respiratory Syncytial Virus, Antibody 86756
 Rickettsia, Antibody 86757
 Rotavirus, Antibody 86759
 Rubella, Antibody 86762
 Rubeola, Antibody 86765
 Salmonella, Antibody 86768
 SARS-CoV-2 (Severe Acute Respiratory Syndrome Coronavirus-2) Antibody Detection 86328, 86769 Antibody Quantification 86413, 0224U Neutralizing Antibody 86408, 86409, 0226U
 Streptococcus pneumoniae 86581
 Tetanus, Antibody 86774
 Thyroglobulin, Antibody 86800
 Toxoplasma, Antibody 86777 IgM 86778
 Treponema Pallidum, Antibody 86780, 0064U
 Trichinella, Antibody 86784
 Tuberculosis, Antibody 86580
 Varicella-zoster, Antibody 86787
 Virus Not Otherwise Specified (NOS), Antibody 86790
 West Nile Virus, Antibody 86789 IgM 86788
 Yersinia, Antibody 86793
 Zika Virus, Antibody IgM 86794
 Microbiology Procedures, Antigen Detection Immunoassay, Qualitative or Semiquantitative 87301-87451
 Adenovirus Enteric Types 40/41, Antigen 87301
 Aspergillus, Antigen 87305
 Chlamydia Trachomatis, Antigen 87320

Clostridium Difficile Toxin(s), Antigen 87324
 Cryptococcus Neoformans, Antigen 87327
 Cryptosporidium, Antigen 87328
 Cytomegalovirus (CMV), Antigen 87332
 Entamoeba Histolytica, Antigen Dispar Group, 87336 Group 87337
 Escherichia Coli 0157, Antigen 87335
 Giardia, Not Antigen 87329
 Helicobacter Pylori, Antigen 87339 Fecal 87338
 Hepatitis B Surface Antigen (HBsAg) 87340 Neutralization 87341 Quantification 87467
 Hepatitis Be Antigen (HBeAg) 87350
 Hepatitis, Delta Agent, Antigen 87380
 Histoplasma Capsulatum, Antigen 87385
 HIV-1, Antigen(s) 87390 With HIV-1 and HIV-2 Antibodies, Single Result 87389
 HIV-2, Antigen 87391
 Influenza A or B, Antigen 87400
 Multiple Organisms 87451
 Not Otherwise Specified (NOS) 87449, 87451
 Respiratory Syncytial Virus, Antigen 87420
 Rotavirus, Antigen 87425
 SARS-CoV-2 (Severe Acute Respiratory Syndrome Coronavirus-2), Antigen 87426
 Shiga-like Toxin, Antigen 87427
 Streptococcus, Group A, Antigen 87430
 Immunoassay, With Direct Optical (i.e. Visual) Observation 87802-87899
 Chlamydia Trachomatis, Antigen 87810
 Clostridium Difficile Toxin A, Antigen 87803
 HIV-1, Antigen With HIV-1 and HIV-2 Antibodies 87806
 Influenza, Antigen 87804, 87812
 Neisseria Gonorrhoeae, Antigen 87850
 Not Otherwise Specified (NOS), Antigen Detection 87899
 Respiratory Syncytial Virus, Antigen 87807
 Severe Acute Respiratory Syndrome Coronavirus 2 (SARS-CoV-2) 87811, 87812
 Streptococcus, Antigen Group A 87880 Group B 87802
 Trichomonas Vaginalis, Antigen 87808
 Immunofluorescent Technique 87260-87300
 Adenovirus, Antigen 87260
 Bordetella Pertussis/Parapertussis, Antigen 87265
 Chlamydia Trachomatis, Antigen 87270
 Cryptosporidium, Antigen 87272
 Cytomegalovirus (CMV), Antigen (DFA) 87271
 Enterovirus, Antigen (DFA) 87267
 Giardia, Antigen 87269
 Herpes Simplex Virus, Antigen

Type 1 87273
 Type 2 87274
 Influenza A Virus, Antigen 87276
 Influenza B Virus, Antigen 87275
 Legionella Pneumophila, Antigen 87278
 Not Otherwise Specified (NOS), Antigen 87299
 Parainfluenza Virus, Each Type, Antigen 87279
 Pneumocystis Carinii, Antigen 87281
 Polyvalent For Multiple Organisms, Antigen 87300
 Respiratory Syncytial Virus, Antigen 87280
 Rubeola, Antigen 87283
 Treponema Pallidum, Antigen 87285
 Varicella-zoster Virus, Antigen 87290
 Nucleic Acid Probe (DNA or RNA), Infectious Agent Detection 87471-87801
 Anaplasma Phagocytophilum, Amplified Probe 87468
 Babesia Microti, Amplified Probe 87469
 Bartonella Henselae and Bartonella Quintana Amplified Probe 87471
 Droplet Digital PCR 0301U With Liquid Enrichment 0302U Quantification 87472
 Borrelia Burgdorferi Amplified Probe 87476 Direct Probe 87475
 Borrelia Miyamotoi, Amplified Probe 87478
 Candida Species 87480 Amplified Probe 87481, 0068U Direct Probe 87481 Quantification 87482
 Central Nervous System (CNS) Pathogen, 12-25 targets 87483, 0323U
 Chlamydia Pneumoniae Amplified Probe 87486 Direct Probe 87485 Quantification 87487
 Chlamydia Trachomatis Amplified Probe 87491 With Neisseria 87494 Direct Probe 87490 Quantification 87492
 Clostridium Difficile, Toxin Gene(s), Amplified Probe 87493
 Cytomegalovirus (CMV) Amplified Probe 87496 Direct Probe 87495 Quantification 87497
 Ehrlichia Chaffeensis, Amplified Probe 87484
 Enterovirus Amplified Probe 87498
 Vancomycin Resistance, Amplified Probe 87500
 Gardnerella Vaginalis Amplified Probe 87511
 Detection 81513, 81514
 Direct Probe 87510
 Quantification 87512
 Gastrointestinal Pathogen, Amplified Probe

Evaluation and Management Services

Evaluation and Management (99202-99499)

Office or Other Outpatient Services (99202-99215)

New Patient (99202-99205)

99202 Office or other outpatient visit for the evaluation and management of a new patient, which requires a medically appropriate history and/or examination and straightforward medical decision making. When using total time on the date of the encounter for code selection, 15 minutes must be met or exceeded. MIPS

FRVU 1.40 **NFRVU** 2.16 **GLOBAL XXX** **MUE** 1

MOD 25, 27, 32, 33, 57, 80, 81, 82, 93, 95, 99, AF, AG, AK, AQ, AS, CR, CS, EP, ET, FP, FR, FS, FT, GO, GA, GC, GE, GF, GJ, GQ, GR, GT, GV, GW, HA, HB, HC, HD, HU, KX, PD, QO, Q1, Q5, Q6, QJ, SA, SB, TH

CPT® Asst: JAN 2025; Vol 35: Issue 1, MAR 2025; Vol 35: Issue 3, SEP 2025; Vol 35: Issue 9, OCT 2024; Vol 0: Issue 10, FEB 2021; Vol 31: Issue 2, JAN 2024; Vol 34: Issue 1, SEP 2024; Vol 34: Issue 9, DEC 2024; Vol 34: Issue 12, DEC 2024; Vol 34: Issue 12, DEC 2024; Vol 34: Issue 12, DEC 2022; Vol 32: Issue 12, MAR 2023; Vol 33: Issue 3, MAR 2023; Vol 33: Issue 3, AUG 2023; Vol 33: Issue 8, OCT 2023; Vol 33: Issue 10, DEC 2023; Vol 33: Issue 12, JAN 2022; Vol 32: Issue 1, JAN 2022; Vol 32: Issue 1, JUN 2022; Vol 32: Issue 6, JUL 2022; Vol 32: Issue 7, NOV 2022; Vol 32: Issue 11, DEC 2020; Vol 30: Issue 12, JUN 2021; Vol 31: Issue 6, SEP 2021; Vol 31: Issue 9, SEP 2021; Vol 31: Issue 9, NOV 2021; Vol 31: Issue 11, JAN 2020; Vol 30: Issue 1, FEB 2020; Vol 30: Issue 2, MAR 2020; Vol 30: Issue 3, MAR 2020; Vol 30: Issue 3, MAY 2020; Vol 30: Issue 5, JUN 2020; Vol 30: Issue 6, SEP 2020; Vol 30: Issue 9, SEP 2020; Vol 30: Issue 9, OCT 2020; Vol 30: Issue 10, NOV 2020; Vol 30: Issue 11, JAN 2019; Vol 29: Issue 1, FEB 2019; Vol 29: Issue 2, OCT 2019; Vol 29: Issue 10, MAR 2018; Vol 28: Issue 3, APR 2018; Vol 28: Issue 4, APR 2018; Vol 28: Issue 4, SEP 2018; Vol 28: Issue 9, JUN 2017; Vol 27: Issue 6, AUG 2017; Vol 27: Issue 8, JAN 2016; Vol 26: Issue 1, MAR 2016; Vol 26: Issue 3, SEP 2016; Vol 26: Issue 9, NOV 2014; Vol 24: Issue 11, JAN 2015; Vol 25: Issue 1, OCT 2015; Vol 25: Issue 10, DEC 2015; Vol 25: Issue 12, AUG 2014; Vol 24: Issue 8, OCT 2014; Vol 24: Issue 10, OCT 2014; Vol 24: Issue 10, AUG 2013; Vol 23: Issue 8, AUG 2013; Vol 23: Issue 8, JAN 2012; Vol 22: Issue 1, FEB 2011; Vol 21: Issue 2, JUN 2011; Vol 21: Issue 6, MAR 2009; Vol 19: Issue 3, AUG 2009; Vol 19: Issue 8, DEC 2009; Vol 19: Issue 12, NOV 2008; Vol 18: Issue 11, APR 2007; Vol 17: Issue 4, SEP 2007; Vol 17: Issue 9, MAY 2006; Vol 16: Issue 5, JUN 2006; Vol 16: Issue 6, OCT 2006; Vol 16: Issue 10, APR 2005; Vol 15: Issue 4, JUN 2005; Vol 15: Issue 6, AUG 2004; Vol 14: Issue 8, FEB 2000; Vol 10: Issue 2

99203 Office or other outpatient visit for the evaluation and management of a new patient, which requires a medically appropriate history and/or examination and low level of medical decision making. When using total time on the date of the encounter for code selection, 30 minutes must be met or exceeded. MIPS

FRVU 2.45 **NFRVU** 3.37 **GLOBAL XXX** **MUE** 1

MOD 25, 27, 32, 33, 57, 80, 81, 82, 93, 95, 99, AF, AG, AK, AQ, AS, CR, CS, EP, ET, FP, FR, FS, FT, GO, GA, GC, GE, GF, GJ, GQ, GR, GT, GV, GW, HA, HB, HC, HD, HU, KX, PD, QO, Q1, Q5, Q6, QJ, SA, SB, TH

CPT® Asst: JAN 2025; Vol 35: Issue 1, MAR 2025; Vol 35: Issue 3, SEP 2025; Vol 35: Issue 9, OCT 2024; Vol 0: Issue 10, FEB 2021; Vol 31: Issue 2, JAN 2024; Vol 34: Issue 1, SEP 2024; Vol 34: Issue 9, DEC 2024; Vol 34: Issue 12, DEC 2024; Vol 34: Issue 12, DEC 2024; Vol 34: Issue 12, DEC 2022; Vol 32: Issue 12, MAR 2023; Vol 33: Issue 3, MAR 2023; Vol 33: Issue 3, AUG 2023; Vol 33: Issue 8, OCT 2023; Vol 33: Issue 10, DEC 2023; Vol 33: Issue 12, JAN 2022; Vol 32: Issue 1, JAN 2022; Vol 32: Issue 1, NOV 2022; Vol 32: Issue 11, NOV 2022; Vol 32: Issue 11, JUN 2021; Vol 31: Issue 6, SEP 2021; Vol 31: Issue 9, SEP 2021; Vol 31: Issue 9, NOV 2021; Vol 31: Issue 11, FEB 2020; Vol 30: Issue 2, MAR 2020; Vol 30: Issue 3, MAR 2020; Vol 30: Issue 3, MAY 2020; Vol 30: Issue 5, JUN 2020; Vol 30: Issue 6, SEP 2020; Vol 30: Issue 9, SEP 2020; Vol 30: Issue 9, OCT 2020; Vol 30: Issue 10, OCT 2020; Vol 30: Issue 10, NOV 2020; Vol 30: Issue 11, JAN 2019; Vol 29: Issue 1, FEB 2019; Vol 29: Issue 2, OCT 2019; Vol 29: Issue 10, MAR 2018; Vol 28: Issue 3, APR 2018; Vol 28: Issue 4, APR 2018; Vol 28: Issue 9, JUN 2017; Vol 27: Issue 6, AUG 2017; Vol 27: Issue 8, JAN 2016; Vol 26: Issue 1, MAR 2016; Vol 26: Issue 3, SEP 2016; Vol 26: Issue 9, NOV 2014; Vol 24: Issue 11, JAN 2015; Vol 25: Issue 1, OCT 2015; Vol 25: Issue 10, DEC 2015; Vol 25: Issue 12, AUG 2014; Vol 24: Issue 8, OCT 2014; Vol 24: Issue 10, OCT 2014; Vol 24: Issue 10, AUG 2013; Vol 23: Issue 8, AUG 2013; Vol 23: Issue 8, JAN 2012; Vol 22: Issue 1, FEB 2011; Vol 21: Issue 2, JUN 2011; Vol 21: Issue 6, MAR 2009; Vol 19: Issue 3, AUG 2009; Vol 19: Issue 8, DEC 2009; Vol 19: Issue 12, NOV 2008; Vol 18: Issue 11, APR 2007; Vol 17: Issue 4, SEP 2007; Vol 17: Issue 9, MAY 2006; Vol 16: Issue 5, JUN 2006; Vol 16: Issue 6, OCT 2006; Vol 16: Issue 10, FEB 2005; Vol 15: Issue 2, APR 2005; Vol 15: Issue 4, JUN 2005; Vol 15: Issue 6, AUG 2004; Vol 14: Issue 8, FEB 2000; Vol 10: Issue 2

99204 Office or other outpatient visit for the evaluation and management of a new patient, which requires a medically appropriate history and/or examination and moderate level of medical decision making. When using total time on the date of the encounter for code selection, 45 minutes must be met or exceeded. MIPS

FRVU 3.99 **NFRVU** 5.05 **GLOBAL XXX** **MUE** 1

MOD 25, 27, 32, 33, 57, 80, 81, 82, 93, 95, 99, AF, AG, AK, AQ, AS, CR, CS, EP, ET, FP, FR, FS, FT, GO, GA, GC, GE, GF, GJ, GQ, GR, GT, GV, GW, HA, HB, HC, HD, HU, KX, PD, QO, Q1, Q5, Q6, QJ, SA, SB, TH

CPT® Asst: JAN 2025; Vol 35: Issue 1, MAR 2025; Vol 35: Issue 3, SEP 2025; Vol 35: Issue 9, OCT 2024; Vol 0: Issue 10, FEB 2021; Vol 31: Issue 2, JAN 2024; Vol 34: Issue 1, JUN 2024; Vol 34: Issue 6, SEP 2024; Vol 34: Issue 9, DEC 2024; Vol 34: Issue 12, DEC 2024; Vol 34: Issue 12, DEC 2024; Vol 34: Issue 12, DEC 2022; Vol 32: Issue 12, MAR 2023; Vol 33: Issue 3, MAR 2023; Vol 33: Issue 3, AUG 2023; Vol 33: Issue 8, OCT 2023; Vol 33: Issue 10, DEC 2023; Vol 33: Issue 12, JAN 2022; Vol 32: Issue 1, JAN 2022; Vol 32: Issue 1, NOV 2022; Vol 32: Issue 11, JUN 2021; Vol 31: Issue 6, SEP 2021; Vol 31: Issue 9, SEP 2021; Vol 31: Issue 9, NOV 2021; Vol 31: Issue 11, FEB 2020; Vol 30: Issue 2, MAR 2020; Vol 30: Issue 3, MAR 2020; Vol 30: Issue 3, MAY 2020; Vol 30: Issue 5, JUN 2020; Vol 30: Issue 6, SEP 2020; Vol 30: Issue 9, SEP 2020; Vol 30: Issue 9, OCT 2020; Vol 30: Issue 10, OCT 2020; Vol 30: Issue 10, NOV 2020; Vol 30: Issue 11, NOV 2020; Vol 30: Issue 11, NOV 2020; Vol 30: Issue 11, JAN 2019; Vol 29: Issue 1, FEB 2019; Vol 29: Issue 2, OCT 2019; Vol 29: Issue 10, MAR 2018; Vol 28: Issue 3, APR 2018; Vol 28: Issue 4, APR 2018; Vol 28: Issue 4, SEP 2018; Vol 28: Issue 9, JUN 2017; Vol 27: Issue 6, AUG 2017; Vol 27:

GLOBAL Global Days **MUE** Medically Unlikely Edit **MOD** Modifier Crosswalk **APC** APC Value **ASC PI** ASC Payment Indicator

APC SI APC Status Indicator **ASC Sep. Pay** ASC Separate Payment **CPT Asst** CPT® Assistant Article Reference

HCPCS CODE DOSAGE Dosage Amount for Drug **PAYMENT LIMIT** Maximum Reimbursement Amount

MOD 24, 25, 57, 80, 81, 82, 95, 99, AF, AG, AK, AQ, AS, CR, CS, FS, FT, GO, GA, GC, GJ, GQ, GR, GT, GV, GW, HC, Q5, Q6, QJ
CPT® Asst: DEC 2024; Vol 34: Issue 12, DEC 2024; Vol 34: Issue 12, DEC 2022; Vol 32: Issue 12, DEC 2022; Vol 32: Issue 12, MAR 2023; Vol 33: Issue 3, AUG 2023; Vol 33: Issue 8, DEC 2023; Vol 33: Issue 12, NOV 2022; Vol 32: Issue 11, MAR 2020; Vol 30: Issue 3, SEP 2020; Vol 30: Issue 9, NOV 2020; Vol 30: Issue 11, APR 2018; Vol 28: Issue 4, JUN 2017; Vol 27: Issue 6, AUG 2017; Vol 27: Issue 8, JAN 2016; Vol 26: Issue 1, NOV 2014; Vol 24: Issue 11, OCT 2014; Vol 24: Issue 10, OCT 2014; Vol 24: Issue 10, JAN 2012; Vol 22: Issue 1, APR 2012; Vol 22: Issue 4, FEB 2011; Vol 21: Issue 2, JUL 2009; Vol 19: Issue 7, AUG 2009; Vol 19: Issue 8, JUL 2007; Vol 17: Issue 7, JAN 2006; Vol 16: Issue 1, AUG 2004; Vol 14: Issue 8, OCT 2003; Vol 13: Issue 10

Prolonged Services (99358-99360)

Prolonged Service on Date Other Than the Face-to-Face Evaluation and Management Service Without Direct Patient Contact (99358-99359)

99358 Prolonged evaluation and management service before and/or after direct patient care; first hour

FRVU 2.63 **NFRVU** 2.67 **GLOBAL** XXX **MUE** 1

MOD 24, 25, 27, 80, 81, 82, 99, AF, AG, AK, AS, CR, ET, FS, FT, GA, GC, GJ, GR, GV, GW, GY, GZ, HC, KX, Q5, Q6, QJ

CPT® Asst: OCT 2024; Vol 0: Issue 10, DEC 2024; Vol 34: Issue 12, NOV 2023; Vol 0: Issue 11, DEC 2022; Vol 32: Issue 12, MAR 2023; Vol 33: Issue 3, JAN 2022; Vol 32: Issue 1, JAN 2022; Vol 32: Issue 1, JUN 2022; Vol 32: Issue 6, NOV 2022; Vol 32: Issue 11, SEP 2021; Vol 31: Issue 9, FEB 2020; Vol 30: Issue 2, SEP 2020; Vol 30: Issue 9, JAN 2019; Vol 29: Issue 1, OCT 2018; Vol 28: Issue 10, OCT 2014; Vol 24: Issue 10, OCT 2014; Vol 24: Issue 10, APR 2013; Vol 23: Issue 4, NOV 2013; Vol 23: Issue 11, AUG 2012; Vol 22: Issue 8, JUN 2008; Vol 18: Issue 6, SEP 2008; Vol 18: Issue 9, MAY 2005; Vol 15: Issue 5, NOV 2005; Vol 15: Issue 11, SEP 2000; Vol 10: Issue 9

99359 Prolonged evaluation and management service before and/or after direct patient care; each additional 30 minutes (List separately in addition to code for prolonged service)

FRVU 1.08 **NFRVU** 1.13 **GLOBAL** ZZZ **MUE** 2

MOD 24, 25, 27, 80, 81, 82, 99, AF, AG, AK, AS, CR, ET, FS, FT, GA, GC, GJ, GR, GV, GW, GY, GZ, HC, KX, Q5, Q6, QJ

CPT® Asst: OCT 2024; Vol 0: Issue 10, DEC 2024; Vol 34: Issue 12, NOV 2023; Vol 0: Issue 11, MAR 2023; Vol 33: Issue 3, JAN 2022; Vol 32: Issue 1, JAN 2022; Vol 32: Issue 1, NOV 2022; Vol 32: Issue 11, FEB 2020; Vol 30: Issue 2, SEP 2020; Vol 30: Issue 9, JAN 2019; Vol 29: Issue 1, OCT 2018; Vol 28: Issue 10, OCT 2014; Vol 24: Issue 10, OCT 2014; Vol 24: Issue 10, APR 2013; Vol 23: Issue 4, NOV 2013; Vol 23: Issue 11, AUG 2012; Vol 22: Issue 8, JUN 2008; Vol 18: Issue 6, SEP 2008; Vol 18: Issue 9, NOV 2005; Vol 15: Issue 11, SEP 2000; Vol 10: Issue 9

Prolonged Clinical Staff Services With Physician or Other Qualified Health Care Professional Supervision (99415-99416)

99415 Prolonged clinical staff service (the service beyond the highest time in the range of total time of the service) during an evaluation and management service in the office or outpatient setting, direct patient contact with physician supervision; first hour (List separately in addition to code for outpatient Evaluation and Management service)

G Code Crosswalk G0513

FRVU 0.62 **NFRVU** 0.62 **GLOBAL** ZZZ **MUE** 1

MOD 24, 25, 27, 80, 81, 82, 99, AF, AG, AK, AS, CR, ET, FS, FT, GA, GC, GJ, GR, GY, GZ, HC, KX, Q5, Q6, QJ

CPT® Asst: MAR 2024; Vol 34: Issue 3, DEC 2024; Vol 34: Issue 12, NOV 2022; Vol 32: Issue 11, FEB 2020; Vol 30: Issue 2, SEP 2020; Vol 30: Issue 9, OCT 2019; Vol 29: Issue 10, FEB 2016; Vol 26: Issue 2, OCT 2015; Vol 25: Issue 10

99416 # +

Prolonged clinical staff service (the service beyond the highest time in the range of total time of the service) during an evaluation and management service in the office or outpatient setting, direct patient contact with physician supervision; each additional 30 minutes (List separately in addition to code for prolonged service)

G Code Crosswalk G0514

FRVU 0.29 **NFRVU** 0.29 **GLOBAL** ZZZ **MUE** 3

MOD 24, 25, 27, 80, 81, 82, 99, AF, AG, AK, AS, CR, ET, FS, FT, GA, GC, GJ, GR, GY, GZ, HC, KX, Q5, Q6, QJ

CPT® Asst: MAR 2024; Vol 34: Issue 3, DEC 2024; Vol 34: Issue 12, NOV 2022; Vol 32: Issue 11, FEB 2020; Vol 30: Issue 2, SEP 2020; Vol 30: Issue 9, OCT 2019; Vol 29: Issue 10, FEB 2016; Vol 26: Issue 2, OCT 2015; Vol 25: Issue 10, OCT 2015; Vol 25: Issue 10

Prolonged Service With or Without Direct Patient Contact on the Date of an Evaluation and Management Service (99417-99418)

99417 # ★ +

Prolonged outpatient evaluation and management service(s) time with or without direct patient contact beyond the required time of the primary service when the primary service level has been selected using total time, each 15 minutes of total time (List separately in addition to the code of the outpatient Evaluation and Management service)

FRVU 0.89 **NFRVU** 0.92 **GLOBAL** ZZZ **MUE** 6

MOD 24, 25, 27, 57, AF, AG, CR, FR, FS, FT, GA, GC, GJ, GK, GR, GU, GY, GZ, Q5, Q6, QJ, SA, SC

CPT® Asst: OCT 2024; Vol 0: Issue 10, DEC 2024; Vol 34: Issue 12, DEC 2024; Vol 34: Issue 12, DEC 2022; Vol 32: Issue 12, MAR 2023; Vol 33: Issue 3, NOV 2022; Vol 32: Issue 11, NOV 2022; Vol 32: Issue 11, JAN 2021; Vol 31: Issue 1, SEP 2020; Vol 30: Issue 9, NOV 2020; Vol 30: Issue 11

99418 # ★ +

Prolonged inpatient or observation evaluation and management service(s) time with or without direct patient contact beyond the required time of the primary service when the primary service level has been selected using total time, each 15 minutes of total time (List separately in addition to the code of the inpatient and observation Evaluation and Management service)

FRVU 1.17 **NFRVU** 1.17 **GLOBAL** ZZZ **MUE** 4

MOD 24, 25, 57, 93, 95, 99, AF, AG, AI, AK, AM, AQ, ET, FQ, FR, FS, FT, GO, GC, GE, GJ, GQ, GR, GT, GV, GW, QJ, SA

CPT® Asst: JAN 2023; Vol 33: Issue 1, MAR 2023; Vol 33: Issue 3, NOV 2022; Vol 32: Issue 11

Standby Services (99360)

99360 Standby service, requiring prolonged attendance, each 30 minutes (eg, operative standby, standby for frozen section, for cesarean/high risk delivery, for monitoring EEG)

FRVU 1.73 **NFRVU** 1.73 **GLOBAL** XXX **MUE** 1

MOD 25, 27, 32, 99, AF, AG, AK, CR, ET, FS, FT, GA, GC, GJ, GR, GV, GW, GY, GZ, HC, KX, Q5, Q6, QJ

● New Code ▲ Revised Code + Add-On Code # Resequenced Code ⚡ FDA Approval Pending Ⓞ Modifier 51 Exempt Ⓟ Modifier 63 Exempt
 ♀ Female-only Procedure ♂ Male-only Procedure [M] Maternity [MIPS] Merit-based Incentive Payment System Code
 ★ Telemedicine Code **FRVU** Facility Total RVU **NFRVU** Non-facility Total RVU

Anesthesia

00100 - 00176

ANESTHESIA

Anesthesia for Procedures on the Head (00100-00222)

- 00100** Anesthesia for procedures on salivary glands, including biopsy MIPS
MOD 23, 53, 76, 77, 99, AA, AD, CR, ET, G8, G9, GA, GJ, GR, KX, LT, P1, P2, P3, P4, P5, P6, Q5, Q6, QJ, QK, QS, QX, QY, QZ, RT
CPT® Asst: APR 2025; Vol 35: Issue 4, OCT 2023; Vol 33: Issue 10, OCT 2019; Vol 29: Issue 10, DEC 2017; Vol 27: Issue 12, AUG 2014; Vol 24: Issue 8, JUL 2012; Vol 22: Issue 7, JUL 2011; Vol 21: Issue 7, OCT 2011; Vol 21: Issue 10, NOV 2007; Vol 17: Issue 11, FEB 2006; Vol 16: Issue 2, MAR 2006; Vol 16: Issue 3, NOV 2002; Vol 12: Issue 11
- 00102** Anesthesia for procedures involving plastic repair of cleft lip MIPS
MOD 53, 76, 77, 99, AA, AD, CR, ET, G8, G9, GA, GC, GJ, GR, KX, P1, P2, P3, P4, P5, P6, Q6, QK, QS, QX, QY, QZ
CPT® Asst: DEC 2017; Vol 27: Issue 12, AUG 2014; Vol 24: Issue 8
- 00103** Anesthesia for reconstructive procedures of eyelid (eg, blepharoplasty, ptosis surgery) MIPS
MOD 53, 76, 77, 99, AA, AD, CR, E1, E2, E3, E4, ET, G8, G9, GA, GC, GJ, GR, KX, P1, P2, P3, P4, P5, P6, Q6, QK, QS, QX, QY, QZ
CPT® Asst: DEC 2017; Vol 27: Issue 12, AUG 2014; Vol 24: Issue 8
- 00104** Anesthesia for electroconvulsive therapy MIPS
MOD 53, 59, 76, 77, 99, AA, AD, CR, ET, G8, G9, GA, GC, GJ, GR, H9, HK, HW, KX, P1, P2, P3, P4, P5, P6, Q6, QK, QS, QX, QY, QZ, XE, XP, XS, XU
CPT® Asst: DEC 2017; Vol 27: Issue 12, AUG 2014; Vol 24: Issue 8
- 00120** Anesthesia for procedures on external, middle, and inner ear including biopsy; not otherwise specified MIPS
MOD 23, 53, 76, 77, 99, AA, AD, CR, ET, G8, G9, GA, GC, GJ, GR, KX, LT, P1, P2, P3, P4, P5, P6, Q6, QK, QS, QX, QY, QZ, RT
CPT® Asst: DEC 2017; Vol 27: Issue 12, AUG 2014; Vol 24: Issue 8
- 00124** Anesthesia for procedures on external, middle, and inner ear including biopsy; otoscopy MIPS
MOD 23, 53, 76, 77, 99, AA, AD, CR, ET, G8, G9, GA, GC, GJ, GR, KX, LT, P1, P2, P3, P4, P5, P6, Q5, Q6, QJ, QK, QS, QX, QY, QZ, RT
CPT® Asst: DEC 2017; Vol 27: Issue 12, AUG 2014; Vol 24: Issue 8
- 00126** Anesthesia for procedures on external, middle, and inner ear including biopsy; tympanotomy MIPS
MOD 23, 53, 76, 77, 99, AA, AD, CR, ET, G8, G9, GA, GC, GJ, GR, KX, LT, P1, P2, P3, P4, P5, P6, Q5, Q6, QJ, QK, QS, QX, QY, QZ, RT
CPT® Asst: DEC 2017; Vol 27: Issue 12, AUG 2014; Vol 24: Issue 8
- 00140** Anesthesia for procedures on eye; not otherwise specified MIPS
MOD 23, 53, 76, 77, 99, AA, AD, CR, ET, G8, G9, GA, GC, GJ, GR, KX, LT, P1, P2, P3, P4, P5, P6, Q5, Q6, QJ, QK, QS, QX, QY, QZ, RT
CPT® Asst: DEC 2017; Vol 27: Issue 12, AUG 2014; Vol 24: Issue 8
- 00142** Anesthesia for procedures on eye; lens surgery MIPS
MOD 23, 53, 76, 77, AA, AD, CR, ET, G8, G9, GA, GC, GJ, GR, KX, LT, P1, P2, P3, P4, P5, P6, Q6, QK, QS, QX, QY, QZ, RT
CPT® Asst: DEC 2017; Vol 27: Issue 12, AUG 2014; Vol 24: Issue 8
- 00144** Anesthesia for procedures on eye; corneal transplant MIPS
MOD 23, 53, 76, 77, AA, AD, CR, ET, G8, G9, GA, GC, GJ, GR, KX, LT, P1, P2, P3, P4, P5, P6, Q6, QK, QS, QX, QY, QZ, RT
CPT® Asst: DEC 2017; Vol 27: Issue 12, AUG 2014; Vol 24: Issue 8
- 00145** Anesthesia for procedures on eye; vitreoretinal surgery MIPS
MOD 23, 53, 76, 77, AA, AD, CR, ET, G8, G9, GA, GC, GJ, GR, KX, LT, P1, P2, P3, P4, P5, P6, Q6, QK, QS, QX, QY, QZ, RT
CPT® Asst: DEC 2017; Vol 27: Issue 12, AUG 2014; Vol 24: Issue 8
- 00147** Anesthesia for procedures on eye; iridectomy MIPS
MOD 23, 53, 76, 77, AA, AD, CR, ET, G8, G9, GA, GC, GJ, GR, KX, LT, P1, P2, P3, P4, P5, P6, Q6, QK, QS, QX, QY, QZ, RT
CPT® Asst: DEC 2017; Vol 27: Issue 12, AUG 2014; Vol 24: Issue 8
- 00148** Anesthesia for procedures on eye; ophthalmoscopy MIPS
MOD 23, 53, 76, 77, AA, AD, CR, ET, G8, G9, GA, GC, GJ, GR, KX, LT, P1, P2, P3, P4, P5, P6, Q6, QK, QS, QX, QY, QZ, RT
CPT® Asst: DEC 2017; Vol 27: Issue 12, AUG 2014; Vol 24: Issue 8
- 00160** Anesthesia for procedures on nose and accessory sinuses; not otherwise specified MIPS
MOD 23, 53, 76, 77, AA, AD, CR, ET, G8, G9, GA, GC, GJ, GR, KX, P1, P2, P3, P4, P5, P6, Q6, QK, QS, QX, QY, QZ
CPT® Asst: DEC 2017; Vol 27: Issue 12, AUG 2014; Vol 24: Issue 8
- 00162** Anesthesia for procedures on nose and accessory sinuses; radical surgery MIPS
MOD 23, 53, 76, 77, AA, AD, CR, ET, G8, G9, GA, GC, GJ, GR, KX, P1, P2, P3, P4, P5, P6, Q6, QK, QS, QX, QY, QZ
CPT® Asst: DEC 2017; Vol 27: Issue 12, AUG 2014; Vol 24: Issue 8
- 00164** Anesthesia for procedures on nose and accessory sinuses; biopsy, soft tissue MIPS
MOD 23, 53, 76, 77, AA, AD, CR, ET, G8, G9, GA, GC, GJ, GR, KX, P1, P2, P3, P4, P5, P6, Q6, QK, QS, QX, QY, QZ
CPT® Asst: DEC 2017; Vol 27: Issue 12, AUG 2014; Vol 24: Issue 8
- 00170** Anesthesia for intraoral procedures, including biopsy; not otherwise specified MIPS
MOD 23, 53, 76, 77, AA, AD, CR, ET, G8, G9, GA, GC, GJ, GR, KX, P1, P2, P3, P4, P5, P6, Q5, Q6, QK, QS, QX, QY, QZ
CPT® Asst: DEC 2017; Vol 27: Issue 12, AUG 2014; Vol 24: Issue 8
- 00172** Anesthesia for intraoral procedures, including biopsy; repair of cleft palate MIPS
MOD 23, 53, 76, 77, AA, AD, CR, ET, G8, G9, GA, GC, GJ, GR, KX, P1, P2, P3, P4, P5, P6, Q5, Q6, QK, QS, QX, QY, QZ
CPT® Asst: DEC 2017; Vol 27: Issue 12, AUG 2014; Vol 24: Issue 8
- 00174** Anesthesia for intraoral procedures, including biopsy; excision of retropharyngeal tumor MIPS
MOD 23, 53, 76, 77, AA, AD, CR, ET, G8, G9, GA, GC, GJ, GR, KX, P1, P2, P3, P4, P5, P6, Q5, Q6, QK, QS, QX, QY, QZ
CPT® Asst: DEC 2017; Vol 27: Issue 12, AUG 2014; Vol 24: Issue 8
- 00176** Anesthesia for intraoral procedures, including biopsy; radical surgery MIPS
MOD 23, 53, 76, 77, AA, AD, CR, ET, G8, G9, GA, GC, GJ, GR, KX, P1, P2, P3, P4, P5, P6, Q5, Q6, QK, QS, QX, QY, QZ
CPT® Asst: DEC 2017; Vol 27: Issue 12, AUG 2014; Vol 24: Issue 8

GLOBAL Global Days **MUE** Medically Unlikely Edit **MOD** Modifier Crosswalk **APC** APC Value **ASC PI** ASC Payment Indicator
APC SI APC Status Indicator **ASC Sep. Pay** ASC Separate Payment **CPT Asst** CPT® Assistant Article Reference
HCPCS CODE DOSAGE Dosage Amount for Drug **PAYMENT LIMIT** Maximum Reimbursement Amount

MOD 23, 53, 76, 77, AA, AD, CR, ET, G8, G9, GA, GC, GJ, GR, KX, P1, P2, P3, P4, P5, P6, Q5, Q6, QK, QS, QX, QY, QZ

CPT® Asst: DEC 2017; Vol 27: Issue 12, AUG 2014; Vol 24: Issue 8

00797 Anesthesia for intraperitoneal procedures in upper abdomen including laparoscopy; gastric restrictive procedure for morbid obesity **MIPS**

MOD 23, 53, 76, 77, AA, AD, CR, ET, G8, G9, GA, GC, GJ, GR, KX, P1, P2, P3, P4, P5, P6, Q5, Q6, QK, QS, QX, QY, QZ

CPT® Asst: DEC 2017; Vol 27: Issue 12, AUG 2014; Vol 24: Issue 8, NOV 2007; Vol 17: Issue 11

Anesthesia for Procedures on the Lower Abdomen (00800-00882)

00800 Anesthesia for procedures on lower anterior abdominal wall; not otherwise specified **MIPS**

MOD 23, 53, 76, 77, AA, AD, CR, ET, G8, G9, GA, GC, GJ, GR, KX, P1, P2, P3, P4, P5, P6, Q5, Q6, QK, QS, QX, QY, QZ

CPT® Asst: DEC 2017; Vol 27: Issue 12, AUG 2014; Vol 24: Issue 8, NOV 2007; Vol 17: Issue 11, MAR 2006; Vol 16: Issue 3

00802 Anesthesia for procedures on lower anterior abdominal wall; panniculectomy **MIPS**

MOD 23, 53, 76, 77, AA, AD, CR, ET, G8, G9, GA, GC, GJ, GR, KX, P1, P2, P3, P4, P5, P6, Q5, Q6, QK, QS, QX, QY, QZ

CPT® Asst: DEC 2017; Vol 27: Issue 12, AUG 2014; Vol 24: Issue 8

00811 Anesthesia for lower intestinal endoscopic procedures, endoscope introduced distal to duodenum; not otherwise specified **MIPS**

MOD 23, 33, 53, 59, 76, 77, AA, AD, CR, ET, G8, G9, GA, GC, GJ, GR, KX, P1, P2, P3, P4, P5, P6, PT, Q5, Q6, QK, QS, QX, QY, QZ, XE, XP, XS, XU

CPT® Asst: NOV 2024; Vol 34: Issue 11, DEC 2017; Vol 27: Issue 12

00812 Anesthesia for lower intestinal endoscopic procedures, endoscope introduced distal to duodenum; screening colonoscopy **MIPS**

MOD 23, 33, 53, 59, 76, 77, AA, AD, CR, ET, G8, G9, GA, GC, GJ, GR, KX, P1, P2, P3, P4, P5, P6, PT, Q5, Q6, QK, QS, QX, QY, QZ, XE, XP, XS, XU

CPT® Asst: NOV 2024; Vol 34: Issue 11, DEC 2017; Vol 27: Issue 12

00813 Anesthesia for combined upper and lower gastrointestinal endoscopic procedures, endoscope introduced both proximal to and distal to the duodenum **MIPS**

MOD 23, 33, 53, 76, 77, AA, AD, CR, ET, G8, G9, GA, GC, GJ, GR, KX, P1, P2, P3, P4, P5, P6, PT, Q5, Q6, QK, QS, QX, QY, QZ

CPT® Asst: DEC 2017; Vol 27: Issue 12

00820 Anesthesia for procedures on lower posterior abdominal wall **MIPS**

MOD 23, 53, 76, 77, AA, AD, CR, ET, G8, G9, GA, GC, GJ, GR, KX, P1, P2, P3, P4, P5, P6, Q5, Q6, QK, QS, QX, QY, QZ

CPT® Asst: DEC 2017; Vol 27: Issue 12, AUG 2014; Vol 24: Issue 8

00830 Anesthesia for hernia repairs in lower abdomen; not otherwise specified **MIPS**

MOD 23, 53, 76, 77, AA, AD, CR, ET, G8, G9, GA, GC, GJ, GR, KX, P1, P2, P3, P4, P5, P6, Q5, Q6, QK, QS, QX, QY, QZ

CPT® Asst: DEC 2017; Vol 27: Issue 12, AUG 2014; Vol 24: Issue 8

00832 Anesthesia for hernia repairs in lower abdomen; ventral and incisional hernias **MIPS**

MOD 23, 53, 76, 77, AA, AD, CR, ET, G8, G9, GA, GC, GJ, GR, KX, P1, P2, P3, P4, P5, P6, Q5, Q6, QK, QS, QX, QY, QZ

CPT® Asst: JUL 2025; Vol 35: Issue 7, DEC 2017; Vol 27: Issue 12, AUG 2014; Vol 24: Issue 8

00834 Anesthesia for hernia repairs in the lower abdomen not otherwise specified, younger than 1 year of age **MIPS**

MOD 23, 53, 59, 76, 77, AA, AD, CR, ET, G8, G9, GA, GC, GJ, GR, KX, P1, P2, P3, P4, P5, P6, Q5, Q6, QK, QS, QX, QY, QZ, XE, XP, XS, XU

CPT® Asst: DEC 2017; Vol 27: Issue 12, AUG 2014; Vol 24: Issue 8

00836 Anesthesia for hernia repairs in the lower abdomen not otherwise specified, infants younger than 37 weeks gestational age at birth and younger than 50 weeks gestational age at time of surgery **MIPS**

MOD 23, 53, 59, 76, 77, AA, AD, CR, ET, G8, G9, GA, GC, GJ, GR, KX, P1, P2, P3, P4, P5, P6, Q5, Q6, QK, QS, QX, QY, QZ, XE, XP, XS, XU

CPT® Asst: DEC 2017; Vol 27: Issue 12, AUG 2014; Vol 24: Issue 8

00840 Anesthesia for intraperitoneal procedures in lower abdomen including laparoscopy; not otherwise specified **MIPS**

MOD 23, 53, 76, 77, AA, AD, CR, ET, G8, G9, GA, GC, GJ, GR, KX, P1, P2, P3, P4, P5, P6, Q5, Q6, QK, QS, QX, QY, QZ

CPT® Asst: DEC 2017; Vol 27: Issue 12, AUG 2014; Vol 24: Issue 8

00842 Anesthesia for intraperitoneal procedures in lower abdomen including laparoscopy; amniocentesis **MIPS** ♀

MOD 23, 53, 76, 77, AA, AD, CR, ET, G8, G9, GA, GC, GJ, GR, KX, P1, P2, P3, P4, P5, P6, Q5, Q6, QK, QS, QX, QY, QZ

CPT® Asst: DEC 2017; Vol 27: Issue 12, AUG 2014; Vol 24: Issue 8

00844 Anesthesia for intraperitoneal procedures in lower abdomen including laparoscopy; abdominoperineal resection **MIPS**

MOD 23, 53, 76, 77, AA, AD, CR, ET, G8, G9, GA, GC, GJ, GR, KX, P1, P2, P3, P4, P5, P6, Q5, Q6, QK, QS, QX, QY, QZ

CPT® Asst: DEC 2017; Vol 27: Issue 12, AUG 2014; Vol 24: Issue 8

00846 Anesthesia for intraperitoneal procedures in lower abdomen including laparoscopy; radical hysterectomy **MIPS** ♀

MOD 23, 53, 76, 77, AA, AD, CR, ET, G8, G9, GA, GC, GJ, GR, KX, P1, P2, P3, P4, P5, P6, Q5, Q6, QK, QS, QX, QY, QZ

CPT® Asst: DEC 2017; Vol 27: Issue 12, AUG 2014; Vol 24: Issue 8

00848 Anesthesia for intraperitoneal procedures in lower abdomen including laparoscopy; pelvic exenteration **MIPS**

MOD 23, 53, 76, 77, AA, AD, CR, ET, G8, G9, GA, GC, GJ, GR, KX, P1, P2, P3, P4, P5, P6, Q5, Q6, QK, QS, QX, QY, QZ

CPT® Asst: DEC 2017; Vol 27: Issue 12, AUG 2014; Vol 24: Issue 8

00851 Anesthesia for intraperitoneal procedures in lower abdomen including laparoscopy; tubal ligation/ transection **MIPS** ♀

MOD 23, 53, 76, 77, AA, AD, CR, ET, G8, G9, GA, GC, GJ, GR, KX, P1, P2, P3, P4, P5, P6, Q5, Q6, QK, QS, QX, QY, QZ

CPT® Asst: DEC 2017; Vol 27: Issue 12, AUG 2014; Vol 24: Issue 8, OCT 2014; Vol 24: Issue 10

00860 Anesthesia for extraperitoneal procedures in lower abdomen, including urinary tract; not otherwise specified **MIPS**

Surgery/Respiratory System

30000 - 30160

SURGERY/RESPIRATORY SYSTEM

Surgical Procedures on the Respiratory System (30000-32999)

Surgical Procedures on the Nose (30000-30999)

Incision Procedures on the Nose (30000-30020)

30000 Drainage abscess or hematoma, nasal, internal approach
FRVU 3.71 **NFRVU** 7.91 **GLOBAL** 010 **MUE** 1
MOD 22, 47, 51, 52, 53, 54, 55, 56, 58, 59, 63, 73, 74, 76, 77, 78, 79, 80, 81, 82, 99, AQ, AR, AS, CR, ET, GA, GC, GJ, GR, KX, PD, Q5, Q6, QJ, XE, XP, XS, XU

ASC PI: P2 **ASC Sep. Pay:** Yes **APC SI:** T **APC:** 5161

30020 Drainage abscess or hematoma, nasal septum
FRVU 3.72 **NFRVU** 7.92 **GLOBAL** 010 **MUE** 1
MOD 22, 47, 51, 52, 53, 54, 55, 56, 58, 59, 63, 73, 74, 76, 77, 78, 79, 99, AQ, AR, CR, ET, GA, GC, GJ, GR, KX, PD, Q5, Q6, QJ, XE, XP, XS, XU

ASC PI: P3 **ASC Sep. Pay:** Yes **APC SI:** T **APC:** 5162

Excision Procedures on the Nose (30100-30160)

30100 Biopsy, intranasal
FRVU 2.08 **NFRVU** 4.16 **GLOBAL** 000 **MUE** 2
MOD 22, 47, 51, 52, 53, 58, 59, 63, 73, 74, 76, 77, 78, 79, 99, AQ, AR, CR, ET, GA, GC, GJ, GR, KX, LT, PD, Q5, Q6, QJ, RT, XE, XP, XS, XU

ASC PI: P3 **ASC Sep. Pay:** Yes **APC SI:** J1 **APC:** 5163

CPT® Asst: JAN 2019; Vol 29: Issue 1

30110 Excision, nasal polyp(s), simple
FRVU 4.05 **NFRVU** 7.40 **GLOBAL** 010 **MUE** 1
MOD 22, 47, 50, 51, 52, 54, 55, 56, 58, 59, 63, 73, 74, 76, 77, 78, 79, 99, AQ, AR, CR, ET, GA, GC, GJ, GR, KX, LT, PD, Q5, Q6, QJ, RT, XE, XP, XS, XU

ASC PI: P3 **ASC Sep. Pay:** Yes **APC SI:** J1 **APC:** 5163

30115 Excision, nasal polyp(s), extensive
FRVU 14.01 **NFRVU** 14.01 **GLOBAL** 090 **MUE** 1
MOD 22, 47, 50, 51, 52, 53, 54, 55, 56, 58, 59, 63, 73, 74, 76, 77, 78, 79, 99, AQ, AR, CR, ET, GA, GC, GJ, GR, KX, LT, PD, Q5, Q6, QJ, RT, XE, XP, XS, XU

ASC PI: A2 **ASC Sep. Pay:** Yes **APC SI:** J1 **APC:** 5164

30117 Excision or destruction (eg, laser), intranasal lesion; internal approach
FRVU 12.36 **NFRVU** 28.69 **GLOBAL** 090 **MUE** 1
MOD 22, 47, 51, 52, 53, 54, 55, 56, 58, 59, 63, 73, 74, 76, 77, 78, 79, 99, AQ, AR, CR, ET, GA, GC, GJ, GR, KX, LT, PD, Q5, Q6, QJ, RT, XE, XP, XS, XU

ASC PI: A2 **ASC Sep. Pay:** Yes **APC SI:** J1 **APC:** 5164

CPT® Asst: DEC 2023; Vol 33: Issue 12, FEB 2023; Vol 33: Issue 2, JAN 2022; Vol 32: Issue 1, SEP 2020; Vol 30: Issue 9, JUL 2019; Vol 29: Issue 7, NOV 2019; Vol 29: Issue 11

30118 Excision or destruction (eg, laser), intranasal lesion; external approach (lateral rhinotomy)
FRVU 21.21 **NFRVU** 21.21 **GLOBAL** 090 **MUE** 1

MOD 22, 47, 51, 52, 53, 54, 55, 56, 58, 59, 62, 63, 73, 74, 76, 77, 78, 79, 99, AQ, AR, CR, ET, GA, GC, GJ, GR, KX, LT, PD, Q5, Q6, QJ, RT, XE, XP, XS, XU

ASC PI: A2 **ASC Sep. Pay:** Yes **APC SI:** J1 **APC:** 5164

CPT® Asst: DEC 2023; Vol 33: Issue 12

30120 Excision or surgical planing of skin of nose for rhinophyma
FRVU 12.74 **NFRVU** 15.42 **GLOBAL** 090 **MUE** 1

MOD 22, 47, 51, 52, 53, 54, 55, 56, 58, 59, 63, 73, 74, 76, 77, 78, 79, 99, AQ, AR, CR, ET, GA, GC, GJ, GR, KX, PD, Q5, Q6, QJ, XE, XP, XS, XU

ASC PI: A2 **ASC Sep. Pay:** Yes **APC SI:** J1 **APC:** 5164

CPT® Asst: MAY 2007; Vol 17: Issue 5

30124 Excision dermoid cyst, nose; simple, skin, subcutaneous
FRVU 9.21 **NFRVU** 9.21 **GLOBAL** 090 **MUE** 2

MOD 22, 47, 51, 52, 53, 54, 55, 56, 58, 59, 63, 73, 74, 76, 77, 78, 79, 99, AQ, AR, CR, ET, GA, GC, GJ, GR, KX, PD, Q5, Q6, QJ, XE, XP, XS, XU

ASC PI: R2 **ASC Sep. Pay:** Yes **APC SI:** J1 **APC:** 5163

30125 Excision dermoid cyst, nose; complex, under bone or cartilage
FRVU 19.56 **NFRVU** 19.56 **GLOBAL** 090 **MUE** 1

MOD 22, 47, 51, 52, 53, 54, 55, 56, 58, 59, 63, 73, 74, 76, 77, 78, 79, 80, 81, 82, 99, AQ, AR, AS, CR, ET, GA, GC, GJ, GR, KX, PD, Q5, Q6, QJ, XE, XP, XS, XU

ASC PI: A2 **ASC Sep. Pay:** Yes **APC SI:** J1 **APC:** 5165

30130 Excision inferior turbinate, partial or complete, any method
FRVU 12.52 **NFRVU** 12.52 **GLOBAL** 090 **MUE** 1

MOD 22, 47, 50, 51, 52, 53, 54, 55, 56, 58, 59, 63, 73, 74, 76, 77, 78, 79, 99, AQ, AR, CR, ET, GA, GC, GJ, GR, KX, LT, PD, Q5, Q6, QJ, RT, XE, XP, XS, XU

ASC PI: A2 **ASC Sep. Pay:** Yes **APC SI:** J1 **APC:** 5164

CPT® Asst: MAY 2003; Vol 13: Issue 5, SEP 2001; Vol 11: Issue 9

30140 Submucous resection inferior turbinate, partial or complete, any method
FRVU 5.37 **NFRVU** 8.89 **GLOBAL** 000 **MUE** 1

MOD 22, 47, 50, 51, 52, 53, 58, 59, 63, 73, 74, 76, 77, 78, 79, 99, AQ, AR, CR, ET, GA, GC, GJ, GR, KX, LT, PD, Q5, Q6, QJ, RT, XE, XP, XS, XU

ASC PI: A2 **ASC Sep. Pay:** Yes **APC SI:** J1 **APC:** 5164

CPT® Asst: JAN 2020; Vol 30: Issue 1, MAR 2008; Vol 18: Issue 3, DEC 2004; Vol 14: Issue 12, APR 2003; Vol 13: Issue 4, MAY 2003; Vol 13: Issue 5, DEC 2002; Vol 12: Issue 12

30150 Rhinectomy; partial
FRVU 23.93 **NFRVU** 23.93 **GLOBAL** 090 **MUE** 1

MOD 22, 47, 51, 52, 53, 54, 55, 56, 58, 59, 62, 63, 73, 74, 76, 77, 78, 79, 99, AQ, AR, CR, ET, GA, GC, GJ, GR, KX, PD, Q5, Q6, QJ, XE, XP, XS, XU

ASC PI: A2 **ASC Sep. Pay:** Yes **APC SI:** J1 **APC:** 5165

30160 Rhinectomy; total
FRVU 24.43 **NFRVU** 24.43 **GLOBAL** 090 **MUE** 1

MOD 22, 51, 52, 53, 54, 55, 56, 58, 62, 63, 73, 74, 76, 77, 78, 79, 80, 81, 82, 99, AQ, AR, AS, CR, ET, GA, GC, GJ, GR, KX, PD, Q5, Q6, QJ

GLOBAL Global Days **MUE** Medically Unlikely Edit **MOD** Modifier Crosswalk **APC** APC Value **ASC PI** ASC Payment Indicator

APC SI APC Status Indicator **ASC Sep. Pay** ASC Separate Payment **CPT Asst** CPT® Assistant Article Reference

HCPCS CODE DOSAGE Dosage Amount for Drug **PAYMENT LIMIT** Maximum Reimbursement Amount

MOD 22, 50, 51, 52, 53, 58, 59, 63, 73, 74, 76, 77, 78, 79, 80, 81, 82, 99, AQ, AR, AS, CR, ET, GA, GC, GJ, GR, KX, LT, PD, Q5, Q6, QJ, RT, SC, XE, XP, XS, XU

ASC PI: P3 **ASC Sep. Pay:** Yes **APC SI:** J1 **APC:** 5153

CPT® Asst: MAY 2018; Vol 28: Issue 5, DEC 2016; Vol 26: Issue 12, APR 2017; Vol 27: Issue 4, JUL 2017; Vol 27: Issue 7

31579 Laryngoscopy, flexible or rigid telescopic, with stroboscopy

FRVU 3.61 **NFRVU** 5.89 **GLOBAL** 000 **MUE** 1

MOD 22, 51, 52, 53, 58, 59, 63, 73, 74, 76, 77, 78, 79, 99, AQ, AR, CR, ET, GA, GC, GJ, GR, KX, PD, Q5, Q6, QJ, SC, XE, XP, XS, XU

ASC PI: P3 **ASC Sep. Pay:** Yes **APC SI:** T **APC:** 5152

CPT® Asst: DEC 2016; Vol 26: Issue 12, APR 2017; Vol 27: Issue 4, JUL 2017; Vol 27: Issue 7

Repair Procedures on the Larynx (31580-31592)

31580 Laryngoplasty; for laryngeal web, with indwelling keel or stent insertion **MIPS**

FRVU 38.55 **NFRVU** 38.55 **GLOBAL** 090 **MUE** 1

MOD 22, 47, 51, 52, 53, 54, 55, 56, 58, 59, 62, 63, 73, 74, 76, 77, 78, 79, 80, 81, 82, 99, AQ, AR, AS, CR, ET, GA, GC, GJ, GR, KX, PD, Q5, Q6, QJ, SC, XE, XP, XS, XU

ASC PI: A2 **ASC Sep. Pay:** Yes **APC SI:** J1 **APC:** 5165

CPT® Asst: MAR 2017; Vol 27: Issue 3, APR 2017; Vol 27: Issue 4

31551 Laryngoplasty; for laryngeal stenosis, with graft, without indwelling stent placement, younger than 12 years of age

FRVU 46.53 **NFRVU** 46.53 **GLOBAL** 090 **MUE** 1

MOD 22, 51, 52, 53, 54, 55, 56, 58, 59, 62, 63, 73, 74, 76, 77, 78, 79, 80, 81, 82, 99, AQ, AR, AS, CR, ET, GA, GC, GJ, GR, KX, PD, Q5, Q6, QJ, SC, XE, XP, XS, XU

ASC PI: G2 **ASC Sep. Pay:** Yes **APC SI:** J1 **APC:** 5165

CPT® Asst: MAR 2017; Vol 27: Issue 3, APR 2017; Vol 27: Issue 4, JUL 2017; Vol 27: Issue 7

31552 Laryngoplasty; for laryngeal stenosis, with graft, without indwelling stent placement, age 12 years or older

FRVU 44.93 **NFRVU** 44.93 **GLOBAL** 090 **MUE** 1

MOD 22, 51, 52, 53, 54, 55, 56, 58, 59, 62, 63, 73, 74, 76, 77, 78, 79, 80, 81, 82, 99, AQ, AR, AS, CR, ET, GA, GC, GJ, GR, KX, PD, Q5, Q6, QJ, SC, XE, XP, XS, XU

ASC PI: G2 **ASC Sep. Pay:** Yes **APC SI:** J1 **APC:** 5165

CPT® Asst: MAR 2017; Vol 27: Issue 3, APR 2017; Vol 27: Issue 4, JUL 2017; Vol 27: Issue 7

31553 Laryngoplasty; for laryngeal stenosis, with graft, with indwelling stent placement, younger than 12 years of age

FRVU 50.45 **NFRVU** 50.45 **GLOBAL** 090 **MUE** 1

MOD 22, 51, 52, 53, 54, 55, 56, 58, 59, 62, 63, 73, 74, 76, 77, 78, 79, 80, 81, 82, 99, AQ, AR, AS, CR, ET, GA, GC, GJ, GR, KX, PD, Q5, Q6, QJ, SC, XE, XP, XS, XU

ASC PI: G2 **ASC Sep. Pay:** Yes **APC SI:** J1 **APC:** 5165

CPT® Asst: MAR 2017; Vol 27: Issue 3, APR 2017; Vol 27: Issue 4, JUL 2017; Vol 27: Issue 7

31554 Laryngoplasty; for laryngeal stenosis, with graft, with indwelling stent placement, age 12 years or older

FRVU 50.47 **NFRVU** 50.47 **GLOBAL** 090 **MUE** 1

MOD 22, 51, 52, 53, 54, 55, 56, 58, 59, 62, 63, 73, 74, 76, 77, 78, 79, 80, 81, 82, 99, AQ, AR, AS, CR, ET, GA, GC, GJ, GR, KX, PD, Q5, Q6, QJ, SC, XE, XP, XS, XU

ASC PI: G2 **ASC Sep. Pay:** Yes **APC SI:** J1 **APC:** 5165

CPT® Asst: MAR 2017; Vol 27: Issue 3, APR 2017; Vol 27: Issue 4, JUL 2017; Vol 27: Issue 7

31584 Laryngoplasty; with open reduction and fixation of (eg, plating) fracture, includes tracheostomy, if performed

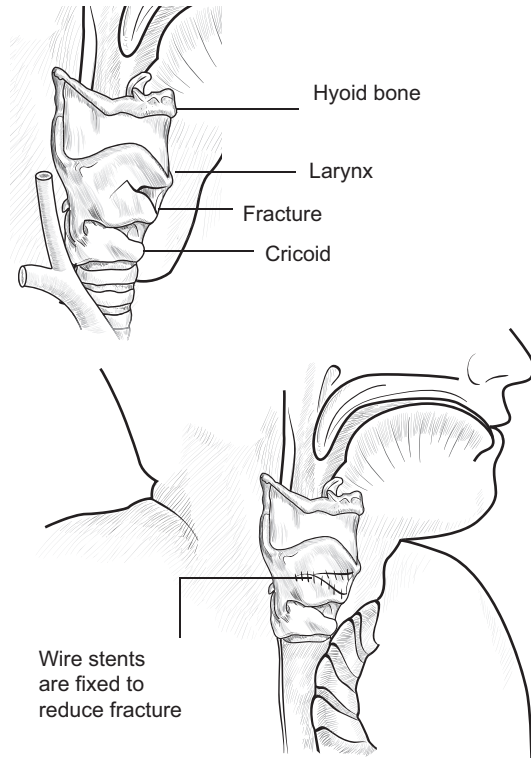
FRVU 42.32 **NFRVU** 42.32 **GLOBAL** 090 **MUE** 1

MOD 22, 47, 51, 52, 53, 54, 55, 56, 58, 59, 62, 63, 76, 77, 78, 79, 80, 81, 82, 99, AQ, AR, AS, CR, ET, GA, GC, GJ, GR, KX, PD, Q5, Q6, QJ, SC, XE, XP, XS, XU

ASC PI: G2 **ASC Sep. Pay:** Yes **APC SI:** J1 **APC:** 5165

CPT® Asst: MAR 2017; Vol 27: Issue 3, APR 2017; Vol 27: Issue 4

Reduction of a Larynx Fracture



31587 Laryngoplasty, cricoid split, without graft placement **MIPS**

FRVU 36.48 **NFRVU** 36.48 **GLOBAL** 090 **MUE** 1

MOD 22, 47, 51, 52, 53, 54, 55, 56, 58, 59, 62, 63, 76, 77, 78, 79, 80, 81, 82, 99, AQ, AR, AS, CR, ET, GA, GC, GJ, GR, KX, PD, Q5, Q6, QJ, SC, XE, XP, XS, XU

ASC PI: G2 **ASC Sep. Pay:** Yes **APC SI:** J1 **APC:** 5165

CPT® Asst: MAR 2017; Vol 27: Issue 3, APR 2017; Vol 27: Issue 4

31590 Laryngeal reinnervation by neuromuscular pedicle **MIPS**

FRVU 28.03 **NFRVU** 28.03 **GLOBAL** 090 **MUE** 1

MOD 22, 47, 51, 52, 53, 54, 55, 56, 58, 59, 62, 63, 73, 74, 76, 77, 78, 79, 80, 81, 82, 99, AQ, AR, AS, CR, ET, GA, GC, GJ, GR, KX, PD, Q5, Q6, QJ, XE, XP, XS, XU

ASC PI: A2 **ASC Sep. Pay:** Yes **APC SI:** J1 **APC:** 5165

CPT® Asst: MAR 2017; Vol 27: Issue 3

31591 Laryngoplasty, medialization, unilateral

FRVU 33.29 **NFRVU** 33.29 **GLOBAL** 090 **MUE** 1

MOD 22, 50, 51, 52, 53, 54, 55, 56, 58, 59, 62, 63, 73, 74, 76, 77, 78, 79, 80, 81, 82, 99, AQ, AR, AS, CR, ET, GA, GC, GJ, GR, KX, LT,

Surgery/Hemic and Lymphatic Systems

Surgical Procedures on the Hemic and Lymphatic Systems (38100-38999)

Surgical Procedures on the Spleen (38100-38200)

Excision Procedures on the Spleen (38100-38102)

- 38100** Splenectomy; total (separate procedure) MIPS
FRVU 34.64 **NFRVU** 34.64 **GLOBAL** 090 **MUE** 1
MOD 22, 47, 51, 52, 53, 54, 55, 56, 58, 59, 62, 63, 76, 77, 78, 79, 80, 81, 82, 99, AQ, AR, AS, CR, ET, GA, GC, GJ, GR, KX, Q5, Q6, QJ, XE, XP, XS, XU
CPT® Asst: DEC 2023; Vol 33: Issue 12, SEP 2012; Vol 22: Issue 9
- 38101** Splenectomy; partial (separate procedure) MIPS
FRVU 35.11 **NFRVU** 35.11 **GLOBAL** 090 **MUE** 1
MOD 22, 47, 51, 52, 53, 54, 55, 56, 58, 59, 62, 63, 76, 77, 78, 79, 80, 81, 82, 99, AQ, AR, AS, CR, ET, GA, GC, GJ, GR, KX, Q5, Q6, QJ, XE, XP, XS, XU
CPT® Asst: OCT 2025; Vol 35: Issue 10, DEC 2023; Vol 33: Issue 12, SEP 2012; Vol 22: Issue 9
- 38102** Splenectomy; total, en bloc for extensive disease, in conjunction with other procedure (List in addition to code for primary procedure) +
FRVU 7.82 **NFRVU** 7.82 **GLOBAL** ZZZ **MUE** 1
MOD 47, 52, 53, 58, 62, 63, 76, 77, 78, 79, 80, 81, 82, 99, AQ, AR, AS, CR, ET, GA, GC, GJ, GR, KX, Q5, Q6, QJ
CPT® Asst: DEC 2023; Vol 33: Issue 12, SEP 2012; Vol 22: Issue 9

Repair Procedures on the Spleen (38115)

- 38115** Repair of ruptured spleen (splenorrhaphy) with or without partial splenectomy MIPS
FRVU 38.90 **NFRVU** 38.90 **GLOBAL** 090 **MUE** 1
MOD 22, 47, 51, 52, 53, 54, 55, 56, 58, 62, 63, 76, 77, 78, 79, 80, 81, 82, 99, AQ, AR, AS, CR, ET, GA, GC, GJ, GR, KX, Q5, Q6, QJ
CPT® Asst: NOV 2024; Vol 34: Issue 11, SEP 2012; Vol 22: Issue 9

Laparoscopic Procedures on the Spleen (38120-38129)

- 38120** Laparoscopy, surgical, splenectomy MIPS
FRVU 32.03 **NFRVU** 32.03 **GLOBAL** 090 **MUE** 1
MOD 22, 47, 51, 52, 53, 54, 55, 56, 58, 59, 62, 63, 76, 77, 78, 79, 80, 81, 82, 99, AQ, AR, AS, CR, ET, GA, GC, GJ, GR, KX, Q5, Q6, QJ, XE, XP, XS, XU
ASC PI: G2 **ASC Sep. Pay:** Yes **APC SI:** J1 **APC:** 5362
CPT® Asst: DEC 2023; Vol 33: Issue 12, SEP 2012; Vol 22: Issue 9, MAR 2000; Vol 10: Issue 3
- 38129** Unlisted laparoscopy procedure, spleen MIPS
FRVU 0.00 **NFRVU** 0.00 **GLOBAL** YYY **MUE** 1
MOD 47, 51, 53, 62, 66, 76, 77, 78, 79, 80, 81, 82, 99, AR, AS, GY, GZ, KX
APC SI: J1 **APC:** 5361
CPT® Asst: SEP 2012; Vol 22: Issue 9, MAR 2000; Vol 10: Issue 3

Injection Procedure on the Spleen (38200)

- 38200** Injection procedure for splenoportography
FRVU 3.84 **NFRVU** 3.84 **GLOBAL** 000 **MUE** 1
MOD 22, 47, 51, 52, 58, 63, 73, 74, 76, 77, 78, 79, 80, 81, 82, 99, AQ, AR, AS, CR, ET, GA, GC, GJ, GR, KX, PD, Q5, Q6, QJ
ASC PI: N1 **ASC Sep. Pay:** No

Cellular and Gene Therapy Procedures (38225-38228)

- 38225** Chimeric antigen receptor T-cell (CAR-T) therapy; harvesting of blood-derived T lymphocytes for development of genetically modified autologous CAR-T cells, per day MIPS
FRVU 2.90 **NFRVU** 2.90 **GLOBAL** XXX **MUE** 1
MOD 52, 58, 59, 76, 77, 79, 99, CR, GA, GC, LU, QJ, XE, XP, XS, XU
CPT® Asst: MAY 2025; Vol 35: Issue 5
- 38226** Chimeric antigen receptor T-cell (CAR-T) therapy; preparation of blood-derived T lymphocytes for transportation (eg, cryopreservation, storage) MIPS
FRVU 1.17 **NFRVU** 1.17 **GLOBAL** XXX **MUE** 1
MOD 52, 58, 76, 77, 79, 99, CR, GA, GC, LU, QJ
CPT® Asst: MAY 2025; Vol 35: Issue 5
- 38227** Chimeric antigen receptor T-cell (CAR-T) therapy; receipt and preparation of CAR-T cells for administration MIPS
FRVU 1.18 **NFRVU** 1.18 **GLOBAL** XXX **MUE** 1
MOD 52, 58, 76, 77, 78, 79, 99, CR, GA, GC, LU, QJ
CPT® Asst: MAY 2025; Vol 35: Issue 5
- 38228** Chimeric antigen receptor T-cell (CAR-T) therapy; CAR-T cell administration, autologous MIPS
FRVU 5.27 **NFRVU** 8.66 **GLOBAL** XXX **MUE** 1
MOD 52, 58, 76, 77, 79, 80, 81, 82, 99, AS, CR, GA, GC, LU, QJ
APC SI: S **APC:** 5694
CPT® Asst: MAY 2025; Vol 35: Issue 5

General Surgical Procedures on the Hemic and Lymphatic Systems (38204-38232)

Bone Marrow or Stem Cell Services/Procedures (38204-38232)

- 38204** Management of recipient hematopoietic progenitor cell donor search and cell acquisition
FRVU 3.00 **NFRVU** 3.00 **GLOBAL** XXX **MUE** 0
MOD 52, 63, 73, 74, 76, 77, 79, 99, AQ, AR, CR, ET, GA, GC, GJ, GR, GY, GZ, KX, Q5, Q6, QJ
ASC PI: N1 **ASC Sep. Pay:** No
CPT® Asst: OCT 2013; Vol 23: Issue 10, JUN 2009; Vol 19: Issue 6
- 38205** Blood-derived hematopoietic progenitor cell harvesting for transplantation, per collection; allogeneic
FRVU 2.48 **NFRVU** 2.48 **GLOBAL** 000 **MUE** 1
MOD 22, 47, 51, 52, 58, 63, 76, 77, 78, 79, 80, 81, 82, 99, AQ, AR, AS, CR, ET, GA, GC, GJ, GR, GY, GZ, KX, Q5, Q6, QJ

GLOBAL Global Days **MUE** Medically Unlikely Edit **MOD** Modifier Crosswalk **APC** APC Value **ASC PI** ASC Payment Indicator
APC SI APC Status Indicator **ASC Sep. Pay** ASC Separate Payment **CPT Asst** CPT® Assistant Article Reference
HCPCS CODE DOSAGE Dosage Amount for Drug **PAYMENT LIMIT** Maximum Reimbursement Amount

42894 Resection of pharyngeal wall requiring closure with myocutaneous or fasciocutaneous flap or free muscle, skin, or fascial flap with microvascular anastomosis MIPS
FRVU 70.65 **NFRVU** 70.65 **GLOBAL** 090 **MUE** 1
MOD 22, 51, 52, 53, 54, 55, 56, 58, 59, 62, 63, 76, 77, 78, 79, 80, 81, 82, 99, AQ, AR, AS, CR, ET, GA, GC, GJ, GR, KX, Q5, Q6, QJ, XE, XP, XS, XU
CPT® Asst: AUG 2010; Vol 20: Issue 8, NOV 2007; Vol 17: Issue 11

Repair Procedures on the Pharynx, Adenoids, and Tonsils (42900-42953)

42900 Suture pharynx for wound or injury
FRVU 10.03 **NFRVU** 10.03 **GLOBAL** 010 **MUE** 1
MOD 22, 47, 51, 52, 53, 54, 55, 56, 58, 59, 63, 73, 74, 76, 77, 78, 79, 80, 81, 82, 99, AQ, AR, AS, CR, ET, FB, FC, GA, GC, GJ, GR, KX, PD, Q5, Q6, QJ, XE, XP, XS, XU
ASC PI: J8 **ASC Sep. Pay:** Yes **APC SI:** J1 **APC:** 5163

42950 Pharyngoplasty (plastic or reconstructive operation on pharynx) MIPS
FRVU 23.92 **NFRVU** 23.92 **GLOBAL** 090 **MUE** 1
MOD 22, 47, 51, 52, 53, 54, 55, 56, 58, 62, 63, 73, 74, 76, 77, 78, 79, 80, 81, 82, 99, AQ, AR, AS, CR, ET, GA, GC, GJ, GR, KX, PD, Q5, Q6, QJ
ASC PI: A2 **ASC Sep. Pay:** Yes **APC SI:** J1 **APC:** 5165
CPT® Asst: FEB 2025; Vol 35: Issue 2, OCT 2019; Vol 29: Issue 10, APR 2016; Vol 26: Issue 4

42953 Pharyngoesophageal repair MIPS
FRVU 28.79 **NFRVU** 28.79 **GLOBAL** 090 **MUE** 1
MOD 22, 51, 52, 53, 54, 55, 56, 58, 63, 76, 77, 78, 79, 80, 81, 82, 99, AQ, AR, AS, CR, ET, GA, GC, GJ, GR, KX, Q5, Q6, QJ

Other Procedures on the Pharynx, Adenoids, and Tonsils (42955-42999)

42955 Pharyngostomy (fistulization of pharynx, external for feeding) MIPS
FRVU 22.75 **NFRVU** 22.75 **GLOBAL** 090 **MUE** 1
MOD 22, 47, 51, 52, 53, 54, 55, 56, 58, 63, 73, 74, 76, 77, 78, 79, 80, 81, 82, 99, AQ, AR, AS, CR, ET, GA, GC, GJ, GR, KX, PD, Q5, Q6, QJ
ASC PI: A2 **ASC Sep. Pay:** Yes **APC SI:** J1 **APC:** 5163

42960 Control oropharyngeal hemorrhage, primary or secondary (eg, post-tonsillectomy); simple MIPS
FRVU 4.90 **NFRVU** 4.90 **GLOBAL** 010 **MUE** 1
MOD 22, 47, 51, 52, 54, 55, 56, 58, 59, 63, 73, 74, 76, 77, 78, 79, 80, 81, 82, 99, AQ, AR, AS, CR, ET, GA, GC, GJ, GR, KX, PD, Q5, Q6, QJ, XE, XP, XS, XU
ASC PI: A2 **ASC Sep. Pay:** Yes **APC SI:** T **APC:** 5162

42961 Control oropharyngeal hemorrhage, primary or secondary (eg, post-tonsillectomy); complicated, requiring hospitalization MIPS
FRVU 12.73 **NFRVU** 12.73 **GLOBAL** 090 **MUE** 1
MOD 22, 47, 51, 52, 53, 54, 55, 56, 58, 59, 63, 76, 77, 78, 79, 80, 81, 82, 99, AQ, AR, AS, CR, ET, GA, GC, GJ, GR, KX, Q5, Q6, QJ, XE, XP, XS, XU

42962 Control oropharyngeal hemorrhage, primary or secondary (eg, post-tonsillectomy); with secondary surgical intervention MIPS

FRVU 15.69 **NFRVU** 15.69 **GLOBAL** 090 **MUE** 1
MOD 22, 47, 51, 52, 53, 54, 55, 56, 58, 59, 63, 73, 74, 76, 77, 78, 79, 99, AQ, AR, CR, ET, GA, GC, GJ, GR, KX, PD, Q5, Q6, QJ, XE, XP, XS, XU
ASC PI: A2 **ASC Sep. Pay:** Yes **APC SI:** J1 **APC:** 5164

42970 Control of nasopharyngeal hemorrhage, primary or secondary (eg, postadenoidectomy); simple, with posterior nasal packs, with or without anterior packs and/or cauterization MIPS
FRVU 12.48 **NFRVU** 12.48 **GLOBAL** 090 **MUE** 1
MOD 22, 47, 51, 52, 54, 55, 56, 58, 59, 63, 73, 74, 76, 77, 78, 79, 99, AQ, AR, CR, ET, GA, GC, GJ, GR, KX, PD, Q5, Q6, QJ, XE, XP, XS, XU
ASC PI: R2 **ASC Sep. Pay:** Yes **APC SI:** T **APC:** 5161

42971 Control of nasopharyngeal hemorrhage, primary or secondary (eg, postadenoidectomy); complicated, requiring hospitalization MIPS
FRVU 13.74 **NFRVU** 13.74 **GLOBAL** 090 **MUE** 1
MOD 22, 47, 51, 52, 53, 54, 55, 56, 58, 59, 63, 76, 77, 78, 79, 80, 81, 82, 99, AQ, AR, AS, CR, ET, GA, GC, GJ, GR, KX, PD, Q5, Q6, QJ, XE, XP, XS, XU

42972 Control of nasopharyngeal hemorrhage, primary or secondary (eg, postadenoidectomy); with secondary surgical intervention MIPS
FRVU 15.36 **NFRVU** 15.36 **GLOBAL** 090 **MUE** 1
MOD 22, 47, 51, 52, 53, 54, 55, 56, 58, 59, 63, 73, 74, 76, 77, 78, 79, 80, 81, 82, 99, AQ, AR, AS, CR, ET, GA, GC, GJ, GR, KX, PD, Q5, Q6, QJ, XE, XP, XS, XU
ASC PI: A2 **ASC Sep. Pay:** Yes **APC SI:** J1 **APC:** 5164

42975 Drug-induced sleep endoscopy, with dynamic evaluation of velum, pharynx, tongue base, and larynx for evaluation of sleep-disordered breathing, flexible, diagnostic MIPS
FRVU 2.92 **NFRVU** 2.92 **GLOBAL** 000 **MUE** 1
MOD 22, 51, 52, 53, 58, 63, 73, 74, 76, 77, 78, 79, 99, AQ, CG, CR, GA, GC, GJ, GR, GY, GZ, PD, Q5, Q6, QJ, SC
ASC PI: R2 **ASC Sep. Pay:** Yes **APC SI:** J1 **APC:** 5153
CPT® Asst: DEC 2021; Vol 31: Issue 12

42999 Unlisted procedure, pharynx, adenoids, or tonsils MIPS
FRVU 0.00 **NFRVU** 0.00 **GLOBAL** YYY **MUE** 1
MOD 51, 53, 62, 66, 76, 77, 78, 79, 80, 81, 82, AR, AS, GY, GZ, KX
APC SI: T **APC:** 5161
CPT® Asst: FEB 2014; Vol 24: Issue 2

Surgical Procedures on the Esophagus (43020-43499)

Incision Procedures on the Esophagus (43020-43045)

43020 Esophagotomy, cervical approach, with removal of foreign body MIPS
FRVU 17.24 **NFRVU** 17.24 **GLOBAL** 090 **MUE** 1
MOD 22, 51, 52, 53, 54, 55, 56, 58, 62, 63, 76, 77, 78, 79, 80, 81, 82, 99, AQ, AR, AS, CR, ET, GA, GC, GJ, GR, KX, Q5, Q6, QJ
ASC PI: G2 **ASC Sep. Pay:** Yes **APC SI:** J1 **APC:** 5163

43030 Cricopharyngeal myotomy MIPS
FRVU 15.91 **NFRVU** 15.91 **GLOBAL** 090 **MUE** 1
MOD 22, 51, 52, 53, 54, 55, 56, 58, 59, 62, 63, 73, 74, 76, 77, 78, 79, 80, 81, 82, 99, AQ, AR, AS, CR, ET, GA, GC, GJ, GR, KX, PD,

● New Code ▲ Revised Code + Add-On Code # Resequenced Code ⚡ FDA Approval Pending Ⓞ Modifier 51 Exempt Ⓟ Modifier 63 Exempt
 ♀ Female-only Procedure ♂ Male-only Procedure [M] Maternity [MIPS] Merit-based Incentive Payment System Code
 ★ Telemedicine Code **FRVU** Facility Total RVU **NFRVU** Non-facility Total RVU

Surgery/Female Genital System

Surgical Procedures on the Female Genital System (56405-58999)

Surgical Procedures on the Vulva, Perineum and Introitus (56405-56821)

Incision Procedures on the Vulva, Perineum and Introitus (56405-56442)

56405 Incision and drainage of vulva or perineal abscess MIPS ♀
FRVU 3.85 **NFRVU** 4.38 **GLOBAL** 010 **MUE** 2
MOD 22, 47, 51, 52, 53, 54, 55, 56, 58, 59, 62, 63, 73, 74, 76, 77, 78, 79, 99, AG, AQ, AR, CR, ET, GA, GC, GJ, GR, KX, PD, Q5, Q6, QJ, XE, XP, XS, XU
ASC PI: P3 **ASC Sep. Pay:** Yes **APC SI:** T **APC:** 5412
CPT® Asst: JUL 2019; Vol 29: Issue 7

56420 Incision and drainage of Bartholin's gland abscess MIPS ♀
FRVU 3.32 **NFRVU** 5.53 **GLOBAL** 010 **MUE** 1
MOD 22, 47, 51, 52, 53, 54, 55, 56, 58, 59, 63, 73, 74, 76, 77, 78, 79, 99, AG, AQ, AR, CR, ET, GA, GC, GJ, GR, KX, PD, Q5, Q6, QJ, XE, XP, XS, XU
ASC PI: P2 **ASC Sep. Pay:** Yes **APC SI:** T **APC:** 5411
CPT® Asst: JUL 2019; Vol 29: Issue 7

56440 Marsupialization of Bartholin's gland cyst MIPS ♀
FRVU 5.50 **NFRVU** 5.50 **GLOBAL** 010 **MUE** 1
MOD 22, 47, 51, 52, 53, 54, 55, 56, 58, 59, 63, 73, 74, 76, 77, 78, 79, 99, AQ, AR, CR, ET, GA, GC, GJ, GR, KX, PD, Q5, Q6, QJ, XE, XP, XS, XU
ASC PI: A2 **ASC Sep. Pay:** Yes **APC SI:** J1 **APC:** 5414
CPT® Asst: JUL 2019; Vol 29: Issue 7

56441 Lysis of labial adhesions ♀
FRVU 4.68 **NFRVU** 5.47 **GLOBAL** 010 **MUE** 1
MOD 22, 47, 51, 52, 53, 54, 55, 56, 58, 59, 63, 73, 74, 76, 77, 78, 79, 80, 81, 82, 99, AQ, AR, AS, CR, ET, GA, GC, GJ, GR, KX, PD, Q5, Q6, QJ, XE, XP, XS, XU
ASC PI: A2 **ASC Sep. Pay:** Yes **APC SI:** J1 **APC:** 5414
CPT® Asst: JUL 2019; Vol 29: Issue 7

56442 Hymenotomy, simple incision ♀
FRVU 1.45 **NFRVU** 1.45 **GLOBAL** 000 **MUE** 1
MOD 22, 47, 51, 52, 53, 58, 59, 63, 73, 74, 76, 77, 78, 79, 80, 81, 82, 99, AQ, AR, AS, GA, GC, GJ, GR, KX, PD, Q5, Q6, QJ, XE, XP, XS, XU
ASC PI: A2 **ASC Sep. Pay:** Yes **APC SI:** J1 **APC:** 5414
CPT® Asst: JUL 2019; Vol 29: Issue 7

Destruction Procedures on the Vulva, Perineum and Introitus (56501-56515)

56501 Destruction of lesion(s), vulva; simple (eg, laser surgery, electrosurgery, cryosurgery, chemosurgery) MIPS ♀
FRVU 4.04 **NFRVU** 5.73 **GLOBAL** 010 **MUE** 1
MOD 22, 47, 51, 52, 54, 55, 56, 58, 59, 63, 73, 74, 76, 77, 78, 79, 99, AQ, AR, CR, ET, GA, GC, GJ, GR, KX, PD, Q5, Q6, QJ, XE, XP, XS, XU
ASC PI: P3 **ASC Sep. Pay:** Yes **APC SI:** T **APC:** 5054

CPT® Asst: JUL 2019; Vol 29: Issue 7, AUG 2019; Vol 29: Issue 8

56515 Destruction of lesion(s), vulva; extensive (eg, laser surgery, electrosurgery, cryosurgery, chemosurgery) MIPS ♀
FRVU 6.42 **NFRVU** 8.30 **GLOBAL** 010 **MUE** 1
MOD 22, 47, 51, 52, 54, 55, 56, 58, 63, 73, 74, 76, 77, 78, 79, 99, AQ, AR, CR, ET, GA, GC, GJ, GR, KX, PD, Q5, Q6, QJ
ASC PI: A2 **ASC Sep. Pay:** Yes **APC SI:** T **APC:** 5054
CPT® Asst: JUL 2019; Vol 29: Issue 7, AUG 2019; Vol 29: Issue 8

Excision Procedures on the Vulva, Perineum and Introitus (56605-56740)

56605 Biopsy of vulva or perineum (separate procedure); 1 lesion ♀
FRVU 1.77 **NFRVU** 2.87 **GLOBAL** 000 **MUE** 1
MOD 22, 47, 51, 52, 53, 58, 59, 62, 63, 73, 74, 76, 77, 78, 79, 99, AQ, AR, CR, ET, GA, GC, GJ, GR, KX, PD, Q5, Q6, QJ, XE, XP, XS, XU
ASC PI: P3 **ASC Sep. Pay:** Yes **APC SI:** T **APC:** 5413
CPT® Asst: JAN 2019; Vol 29: Issue 1, JUL 2019; Vol 29: Issue 7, JUN 2008; Vol 18: Issue 6, SEP 2000; Vol 10: Issue 9

56606 Biopsy of vulva or perineum (separate procedure); each separate additional lesion (List separately in addition to code for primary procedure) ♀
FRVU 0.86 **NFRVU** 1.13 **GLOBAL** ZZZ **MUE** 6
MOD 52, 53, 58, 59, 62, 63, 73, 74, 76, 77, 78, 79, 99, AQ, AR, CR, ET, GA, GC, GJ, GR, KX, PD, Q5, Q6, QJ, XE, XP, XS, XU
ASC PI: N1 **ASC Sep. Pay:** No
CPT® Asst: JAN 2019; Vol 29: Issue 1, JUL 2019; Vol 29: Issue 7

56620 Vulvectomy simple; partial MIPS ♀
FRVU 17.74 **NFRVU** 17.74 **GLOBAL** 090 **MUE** 1
MOD 22, 47, 51, 52, 53, 54, 55, 56, 58, 59, 62, 63, 73, 74, 76, 77, 78, 79, 80, 81, 82, 99, AQ, AR, AS, CR, ET, GA, GC, GJ, GR, KX, PD, Q5, Q6, QJ, XE, XP, XS, XU
ASC PI: A2 **ASC Sep. Pay:** Yes **APC SI:** J1 **APC:** 5414
CPT® Asst: JAN 2019; Vol 29: Issue 1, JUL 2019; Vol 29: Issue 7, DEC 2013; Vol 23: Issue 12

56625 Vulvectomy simple; complete MIPS ♀
FRVU 20.20 **NFRVU** 20.20 **GLOBAL** 090 **MUE** 1
MOD 22, 47, 51, 52, 53, 54, 55, 56, 58, 62, 63, 73, 74, 76, 77, 78, 79, 80, 81, 82, 99, AQ, AR, AS, CR, ET, GA, GC, GJ, GR, KX, PD, Q5, Q6, QJ
ASC PI: A2 **ASC Sep. Pay:** Yes **APC SI:** J1 **APC:** 5414
CPT® Asst: JUL 2019; Vol 29: Issue 7

56630 Vulvectomy, radical, partial MIPS ♀
FRVU 29.00 **NFRVU** 29.00 **GLOBAL** 090 **MUE** 1
MOD 22, 51, 52, 53, 54, 55, 56, 58, 59, 62, 63, 76, 77, 78, 79, 80, 81, 82, 99, AQ, AR, AS, CR, ET, GA, GC, GJ, GR, KX, Q5, Q6, QJ, XE, XP, XS, XU
ASC PI: G2 **ASC Sep. Pay:** Yes **APC SI:** J1 **APC:** 5415
CPT® Asst: FEB 2019; Vol 29: Issue 2, JUL 2019; Vol 29: Issue 7

56631 Vulvectomy, radical, partial; with unilateral inguinofemoral lymphadenectomy MIPS ♀
FRVU 35.90 **NFRVU** 35.90 **GLOBAL** 090 **MUE** 1

GLOBAL Global Days **MUE** Medically Unlikely Edit **MOD** Modifier Crosswalk **APC** APC Value **ASC PI** ASC Payment Indicator
APC SI APC Status Indicator **ASC Sep. Pay** ASC Separate Payment **CPT Asst** CPT® Assistant Article Reference
HCPCS CODE DOSAGE Dosage Amount for Drug **PAYMENT LIMIT** Maximum Reimbursement Amount

Excision Procedures for Maternity Care and Delivery (59100-59160)

- 59100** Hysterotomy, abdominal (eg, for hydatidiform mole, abortion) MIPS M ♀
FRVU 25.88 **NFRVU** 25.88 **GLOBAL** 090 **MUE** 1
MOD 22, 51, 52, 53, 54, 55, 56, 58, 59, 62, 63, 73, 74, 76, 77, 78, 79, 80, 81, 82, 99, AQ, AR, AS, CR, ET, GA, GC, GJ, GR, HD, KX, PD, Q5, Q6, QJ, TH, XE, XP, XS, XU
ASC PI: R2 **ASC Sep. Pay:** Yes **APC SI:** J1 **APC:** 5415
CPT® Asst: JUL 2019; Vol 29: Issue 7
- 59120** Surgical treatment of ectopic pregnancy; tubal or ovarian, requiring salpingectomy and/or oophorectomy, abdominal or vaginal approach MIPS M ♀
FRVU 24.68 **NFRVU** 24.68 **GLOBAL** 090 **MUE** 1
MOD 22, 51, 52, 53, 54, 55, 56, 58, 59, 62, 63, 76, 77, 78, 79, 80, 81, 82, 99, AQ, AR, AS, CR, ET, GA, GC, GJ, GR, HD, KX, LT, Q5, Q6, QJ, RT, TH, XE, XP, XS, XU
CPT® Asst: JUL 2019; Vol 29: Issue 7
- 59121** Surgical treatment of ectopic pregnancy; tubal or ovarian, without salpingectomy and/or oophorectomy MIPS M ♀
FRVU 24.69 **NFRVU** 24.69 **GLOBAL** 090 **MUE** 1
MOD 22, 51, 52, 53, 54, 55, 56, 58, 59, 62, 63, 76, 77, 78, 79, 80, 81, 82, 99, AQ, AR, AS, CR, ET, GA, GC, GJ, GR, HD, KX, Q5, Q6, QJ, TH, XE, XP, XS, XU
CPT® Asst: JUL 2019; Vol 29: Issue 7
- 59130** Surgical treatment of ectopic pregnancy; abdominal pregnancy MIPS M ♀
FRVU 28.64 **NFRVU** 28.64 **GLOBAL** 090 **MUE** 1
MOD 22, 51, 52, 53, 54, 55, 56, 58, 59, 63, 76, 77, 78, 79, 80, 81, 82, 99, AQ, AR, AS, CR, ET, GA, GC, GJ, GR, HD, KX, Q5, Q6, QJ, TH, XE, XP, XS, XU
CPT® Asst: JUL 2019; Vol 29: Issue 7
- 59136** Surgical treatment of ectopic pregnancy; interstitial, uterine pregnancy with partial resection of uterus MIPS M ♀
FRVU 27.19 **NFRVU** 27.19 **GLOBAL** 090 **MUE** 1
MOD 22, 51, 52, 53, 54, 55, 56, 58, 59, 63, 76, 77, 78, 79, 80, 81, 82, 99, AQ, AR, AS, CR, ET, GA, GC, GJ, GR, HD, KX, Q5, Q6, QJ, TH, XE, XP, XS, XU
CPT® Asst: JUL 2019; Vol 29: Issue 7
- 59140** Surgical treatment of ectopic pregnancy; cervical, with evacuation MIPS M ♀
FRVU 12.64 **NFRVU** 12.64 **GLOBAL** 090 **MUE** 1
MOD 22, 47, 51, 52, 53, 54, 55, 56, 58, 59, 63, 76, 77, 78, 79, 80, 81, 82, 99, AQ, AR, AS, CR, ET, GA, GC, GJ, GR, HD, KX, Q5, Q6, QJ, TH, XE, XP, XS, XU
CPT® Asst: JUL 2019; Vol 29: Issue 7
- 59150** Laparoscopic treatment of ectopic pregnancy; without salpingectomy and/or oophorectomy MIPS M ♀
FRVU 23.95 **NFRVU** 23.95 **GLOBAL** 090 **MUE** 1
MOD 22, 51, 52, 53, 54, 55, 56, 58, 59, 63, 73, 74, 76, 77, 78, 79, 80, 81, 82, 99, AQ, AR, AS, CR, ET, GA, GC, GJ, GR, HD, KX, PD, Q5, Q6, QJ, TH, XE, XP, XS, XU
ASC PI: G2 **ASC Sep. Pay:** Yes **APC SI:** J1 **APC:** 5361
CPT® Asst: JUL 2019; Vol 29: Issue 7

- 59151** Laparoscopic treatment of ectopic pregnancy; with salpingectomy and/or oophorectomy MIPS M ♀
FRVU 23.41 **NFRVU** 23.41 **GLOBAL** 090 **MUE** 1
MOD 22, 51, 52, 53, 54, 55, 56, 58, 59, 63, 73, 74, 76, 77, 78, 79, 80, 81, 82, 99, AQ, AR, AS, CR, ET, GA, GC, GJ, GR, HD, KX, PD, Q5, Q6, QJ, TH, XE, XP, XS, XU
ASC PI: G2 **ASC Sep. Pay:** Yes **APC SI:** J1 **APC:** 5361
CPT® Asst: JUL 2019; Vol 29: Issue 7
- 59160** Curettage, postpartum MIPS M ♀
FRVU 5.67 **NFRVU** 8.11 **GLOBAL** 010 **MUE** 1
MOD 22, 47, 51, 52, 53, 54, 55, 56, 58, 63, 73, 74, 76, 77, 78, 79, 80, 81, 82, 99, AG, AQ, AR, AS, CR, ET, GA, GC, GJ, GR, HD, KX, PD, Q5, Q6, QJ, TH
ASC PI: A2 **ASC Sep. Pay:** Yes **APC SI:** J1 **APC:** 5414
CPT® Asst: JUL 2019; Vol 29: Issue 7, SEP 2002; Vol 12: Issue 9

Introduction Procedures for Maternity Care and Delivery (59200)

- 59200** Insertion of cervical dilator (eg, laminaria, prostaglandin) (separate procedure) MIPS M ♀
FRVU 2.02 **NFRVU** 3.98 **GLOBAL** 000 **MUE** 1
MOD 22, 47, 51, 52, 53, 58, 63, 73, 74, 76, 77, 78, 79, 99, AQ, AR, CR, ET, GA, GC, GJ, GR, HD, KX, PD, Q5, Q6, QJ, SB, TH
ASC PI: P3 **ASC Sep. Pay:** Yes **APC SI:** T **APC:** 5412
CPT® Asst: JUL 2019; Vol 29: Issue 7, DEC 2017; Vol 27: Issue 12, JUL 2005; Vol 15: Issue 7

Repair Procedures for Maternity Care and Delivery (59300-59350)

- 59300** Episiotomy or vaginal repair, by other than attending MIPS M ♀
FRVU 4.44 **NFRVU** 6.83 **GLOBAL** 000 **MUE** 1
MOD 22, 47, 51, 52, 53, 58, 59, 63, 73, 74, 76, 77, 78, 79, 80, 81, 82, 99, AQ, AR, AS, CR, ET, GA, GC, GJ, GR, HD, KX, PD, Q5, Q6, QJ, SB, TH, XE, XP, XS, XU
ASC PI: P3 **ASC Sep. Pay:** Yes **APC SI:** J1 **APC:** 5414
CPT® Asst: DEC 2023; Vol 33: Issue 12, JUL 2019; Vol 29: Issue 7
- 59320** Cerclage of cervix, during pregnancy; vaginal MIPS M ♀
FRVU 4.58 **NFRVU** 4.58 **GLOBAL** 000 **MUE** 1
MOD 22, 47, 51, 52, 53, 58, 63, 73, 74, 76, 77, 78, 79, 80, 81, 82, 99, AQ, AR, AS, CR, ET, GA, GC, GJ, GR, HD, KX, PD, Q5, Q6, QJ, TH
ASC PI: A2 **ASC Sep. Pay:** Yes **APC SI:** J1 **APC:** 5414
CPT® Asst: JUL 2019; Vol 29: Issue 7, FEB 2007; Vol 17: Issue 2, NOV 2006; Vol 16: Issue 11
- 59325** Cerclage of cervix, during pregnancy; abdominal MIPS M ♀
FRVU 7.24 **NFRVU** 7.24 **GLOBAL** 000 **MUE** 1
MOD 22, 51, 52, 53, 58, 63, 76, 77, 78, 79, 80, 81, 82, 99, AQ, AR, AS, CR, ET, GA, GC, GJ, GR, HD, KX, Q5, Q6, QJ, TH
CPT® Asst: JUL 2019; Vol 29: Issue 7, FEB 2007; Vol 17: Issue 2, NOV 2006; Vol 16: Issue 11
- 59350** Hysterorrhaphy of ruptured uterus MIPS M ♀
FRVU 8.34 **NFRVU** 8.34 **GLOBAL** 000 **MUE** 1
MOD 22, 51, 52, 53, 58, 63, 76, 77, 78, 79, 80, 81, 82, 99, AQ, AR, AS, CR, ET, GA, GC, GJ, GR, HD, KX, Q5, Q6, QJ, TH
CPT® Asst: JUL 2019; Vol 29: Issue 7

● New Code ▲ Revised Code + Add-On Code # Resequenced Code ⚡ FDA Approval Pending Ⓞ Modifier 51 Exempt Ⓟ Modifier 63 Exempt
 ♀ Female-only Procedure ♂ Male-only Procedure M Maternity MIPS Merit-based Incentive Payment System Code
 ★ Telemedicine Code FRVU Facility Total RVU NFRVU Non-facility Total RVU

AAPC Appendix A

New, Revised, and Deleted Codes and Advice for 2027

New Codes

CPT® Code	Description	Advice
Evaluation and Management Services		
99445	Remote monitoring of physiologic parameter(s) (eg, weight, blood pressure, pulse oximetry, respiratory flow rate); device(s) supply with daily recording(s) or programmed alert(s) transmission, 2-15 days in a 30-day period	CPT® revises 99453 and 99454 and adds new code 99445 to better represent remote physiologic monitoring (RPM) services. All three codes require the use of a medical device as defined by the Food and Drug Administration (FDA), and a physician or other qualified healthcare professional must order the service. Code 99453 represents the initial setup of the monitoring equipment and patient education on its use. The 2026 revision moves a semicolon to before "initial," so the term is included only in 99453 and not in child codes 99445 and 99454. Codes 99445 and 99454 represent the supply of devices used for daily recording or programmed alert transmissions. New code 99445 applies when monitoring is performed for two to 15 days in a 30-day period, and revised code 99454 applies when monitoring is performed for 16 to 30 days in a 30-day period. Previously, 99454 applied to "each 30 days." Do not report these codes if monitoring is below the minimum required number of days for the respective service. Effective date of this code: Jan. 1, 2026.
99470	Remote physiologic monitoring treatment management services, clinical staff/physician/other qualified health care professional time in a calendar month requiring 1 real-time interactive communication with the patient/caregiver during the calendar month; first 10 minutes	CPT® adds new code 99470 and revises 99457 and +99458 for remote physiologic monitoring (RPM) treatment management services. The shared code descriptors now clarify that one real-time interactive communication with the patient or caregiver is required during the month and that "month" means a calendar month. These services require the use of one or more Food and Drug Administration (FDA)-defined medical devices and must be ordered by a physician or other qualified healthcare professional. Report 99470 for the first completed 10 minutes of clinical staff, physician, or qualified healthcare professional time in a calendar month. Do not report 99470 for fewer than 10 minutes of service. Code 99457 applies to the first completed 20 minutes, and add-on code +99458 applies to each additional completed 20 minutes beyond the 99457 service. Effective date of this code: Jan. 1, 2026.
Musculoskeletal System		
27458	Osteotomy(ies), femur, unilateral, with insertion of an externally controlled intramedullary lengthening device, including iliotibial band release when performed, imaging, alignment assessments, computations of adjustment schedules, and management of the intramedullary lengthening device	CPT® adds 27458 and 27713 to describe osteotomy (bone cutting) procedures with insertion of an externally controlled intramedullary lengthening device. The provider inserts the device into the canal inside the bone and gradually lengthens it over time, controlled from outside the body using methods like magnetic or electronic adjustments. Both codes include all related services: imaging, bone alignment assessments, creation of adjustment schedules, and ongoing management of the device. Iliotibial band release, when performed, is included in 27458. Code 27458 applies to femoral (thigh bone) osteotomy, and code 27713 applies to tibial (shin bone) osteotomy, with fibula osteotomy included when performed. These new codes provide specific options for modern bone lengthening procedures. Note that CPT® also deletes 27468, which represented combined femoral lengthening and shortening. Effective date of this code: Jan. 1, 2026.
27713	Osteotomy(ies), tibia, including fibula when performed, unilateral, with insertion of an externally controlled intramedullary lengthening device, including imaging, alignment assessments, computations of adjustment schedules, and management of the intramedullary lengthening device	CPT® adds 27458 and 27713 to describe osteotomy (bone cutting) procedures with insertion of an externally controlled intramedullary lengthening device. The provider inserts the device into the canal inside the bone and gradually lengthens it over time, controlled from outside the body using methods like magnetic or electronic adjustments. Both codes include all related services: imaging, bone alignment assessments, creation of adjustment schedules, and ongoing management of the device. Iliotibial band release, when performed, is included in 27458. Code 27458 applies to femoral (thigh bone) osteotomy, and code 27713 applies to tibial (shin bone) osteotomy, with fibula osteotomy included when performed. These new codes provide specific options for modern bone lengthening procedures. Note that CPT® also deletes 27468, which represented combined femoral lengthening and shortening. Effective date of this code: Jan. 1, 2026.
Cardiovascular System		
33882	Endovascular repair of the thoracic aorta by deployment of a branched endograft multipiece system involving an aorto-aortic tube device with a fenestration for the left subclavian artery stent graft(s) and all aortic tube endograft extension(s) placed from the level of the left common carotid artery to the celiac artery, including pre-procedure sizing and device selection, all target zone angioplasty, all nonselective catheterization(s) and left subclavian artery selective catheterization(s), and all associated radiological supervision and interpretation	CPT® revises 33880, 33881, 33883, and 33886 and adds 33882 to update terminology, clarify what services are included, and align code selection with the anatomic extent of thoracic aortic coverage. The revised descriptors explicitly include preprocedure sizing and device selection, nonselective catheterization(s), and all associated radiological supervision and interpretation. Previously, you used a separate code for the radiology services. The updates also clarify when angioplasty and stenting within the treatment zone are included. Code selection now hinges on whether the endograft covers the left subclavian artery and on the most proximal extent of aortic coverage at the end of the session. Report 33880 or 33881 for deployment of an aorto-aortic tube endograft (with or without coverage of the left subclavian artery, respectively). Report new code 33882 for deployment of a branched, multipiece endograft system with a fenestration (opening) and a stent-graft extension into the left subclavian artery. Report 33883 for delayed proximal extension(s) not involving coverage of the left subclavian artery, and 33886 for delayed distal extension(s) down to the celiac artery. The update also deletes related radiology supervision and interpretation codes 75956 to 75959 and adjunct codes +33884, 33889, and 33891. Effective date of this code: Jan. 1, 2026.

Join the biggest team in healthcare information management.

As an AAPC member, you'll be part of a global network of 250,000+ career learners and working professionals. Our credentials are among the most highly sought after in the industry – in part because AAPC members are trained for more than passing an exam. They are trained to succeed on the job from day one.

"If you want to rise in the ranks of the Healthcare business portion of the medical field, I highly suggest that you become a member of AAPC and obtain your certifications through them. They will help you to advance and open the door of opportunity for you."

- Latisha Booker, CPC

"AAPC has not only provided me with the opportunity to earn multiple credentials but has also opened important doors for me in my career."

- Mary Arnold, CPC, CPMA, CRC, RMA, HR-C

"While taking classes, I was introduced to AAPC. I became a member to help boost my career, and more than 20 years later, I'm still an AAPC member."

- Bradley Miller, CPC, CRC, CDEO

Whether you're just getting started or a seasoned pro, AAPC membership will give you the support, training, tools, and resources to help you launch and advance your career successfully,



Learn more at [aapc.com](https://www.aapc.com)



2027 Procedural Coding Expert



9 798892 581677

E-Book ISBN: 979-8-892581-677