



Your essential illustrated coding guide for orthopedics, including CPT®, HCPCS Level II, tips, CPT® to ICD-10-CM Cross References, NCCI edits, and RVU information

CODERS' SPECIALTY GUIDE

# Orthopedics

## Volumes I & II



# 2026

# Contents

## Volume I

Introduction .....	v
Helpful Information for Using the Coders' Specialty Guide .....	1
Integumentary System .....	5
Musculoskeletal System (20103-27598) .....	16

## Volume II

Musculoskeletal System (27599-29999) .....	881
Radiology .....	1264
Medicine .....	1301
Evaluation and Management .....	1306
Category III Codes .....	1336
HCPCS Level II Codes .....	1351
• Outpatient PPS .....	1351
• Procedures/Professional Services .....	1353
• Temporary National Codes (Non-Medicare) .....	1356
ICD-10-CM Cross Reference Details .....	1357
Modifier Descriptors .....	1743
Terminology .....	1753

# Integumentary System

## 10180

Incision and drainage, complex, postoperative wound infection

### Clinical Responsibility

The provider cleans the operative site with an antiseptic and may inject a local anesthetic such as lidocaine. Then, he incises the area of wound infection and drains it of fluid collection. He performs copious irrigation of the abscess cavity with something like normal saline solution to adequately remove debris from the wound cavity. This also facilitates subsequent breakup of cavities or compartments of fluid. After complete removal of the pus, he irrigates the wound with an antibiotic solution and packs it with gauze to prevent leakage of cellular fluid from the noninfected tissues surrounding the abscess. Loose packing or gauze allows continued drainage and healing by secondary intention. Alternatively, he may close the wound in layers around a drain. A complicated procedure generally takes longer to perform and requires more extensive expertise and technique on the part of the provider.

### Coding Tips

A complicated incision and drainage can involve multiple incisions, drain placements, extensive packing, and a more complicated wound closure. Make sure the documentation supports a complicated incision and drainage.

### Fee Schedule Information

**Medicare Fees (National):** Conversion Factor \$32.3465, Facility Fee: \$175.96, Non Facility Fee: \$255.86

**RVU (Facility):** Work RVU 2.30, Practice Exp. RVU 2.62, Malpractice RVU 0.52, Total RVU 5.44

**RVU (Non-Facility):** Work RVU 2.30, Practice Exp. RVU 5.09, Malpractice RVU 0.52, Total RVU 7.91

**MPFS Payment Policy Indicators:** Global Period 010, Preop 10.00%, Intraop 80.00%, Postop 10.00%, MPFS Status Indicator: A, PC/TC Indicator: 0, Endoscopic Base Code: None

**Practitioner MUE:** 2

### Modifier Allowances

22, 51, 52, 53, 54, 55, 56, 58, 59, 73, 74, 76, 77, 78, 79, 99, AG, AQ, AR, GA, GC, GJ, GR, KX, LT, PD, Q5, Q6, QJ, RT, XE, XP, XS, XU

### NCCI Alerts (version 31.0)

0213T<sup>0</sup>, 0216T<sup>0</sup>, 0596T<sup>1</sup>, 0597T<sup>1</sup>, 11720<sup>1</sup>, 11721<sup>1</sup>, 12001<sup>1</sup>, 12002<sup>1</sup>, 12004<sup>1</sup>, 12005<sup>1</sup>, 12006<sup>1</sup>, 12007<sup>1</sup>, 12011<sup>1</sup>, 12013<sup>1</sup>, 12014<sup>1</sup>, 12015<sup>1</sup>, 12016<sup>1</sup>, 12017<sup>1</sup>, 12018<sup>1</sup>, 12020<sup>1</sup>, 12021<sup>1</sup>, 12031<sup>1</sup>, 12032<sup>1</sup>, 12034<sup>1</sup>, 12035<sup>1</sup>, 12036<sup>1</sup>, 12037<sup>1</sup>, 12041<sup>1</sup>, 12042<sup>1</sup>, 12044<sup>1</sup>, 12045<sup>1</sup>, 12046<sup>1</sup>, 12047<sup>1</sup>, 12051<sup>1</sup>, 12052<sup>1</sup>, 12053<sup>1</sup>, 12054<sup>1</sup>, 12055<sup>1</sup>, 12056<sup>1</sup>, 12057<sup>1</sup>, 13100<sup>1</sup>, 13101<sup>1</sup>, 13102<sup>1</sup>, 13120<sup>1</sup>, 13121<sup>1</sup>, 13122<sup>1</sup>, 13131<sup>1</sup>, 13132<sup>1</sup>, 13133<sup>1</sup>, 13151<sup>1</sup>, 13152<sup>1</sup>, 13153<sup>1</sup>, 20500<sup>1</sup>, 36000<sup>1</sup>, 36400<sup>1</sup>, 36405<sup>1</sup>, 36406<sup>1</sup>, 36410<sup>1</sup>, 36420<sup>1</sup>, 36425<sup>1</sup>, 36430<sup>1</sup>, 36440<sup>1</sup>, 36591<sup>0</sup>, 36592<sup>0</sup>, 36600<sup>1</sup>, 36640<sup>1</sup>, 43752<sup>1</sup>, 51701<sup>1</sup>, 51702<sup>1</sup>, 51703<sup>1</sup>, 62320<sup>0</sup>, 62321<sup>0</sup>, 62322<sup>0</sup>, 62323<sup>0</sup>, 62324<sup>0</sup>, 62325<sup>0</sup>, 62326<sup>0</sup>, 62327<sup>0</sup>, 64400<sup>0</sup>, 64405<sup>0</sup>, 64408<sup>0</sup>, 64415<sup>0</sup>, 64416<sup>0</sup>, 64417<sup>0</sup>, 64418<sup>0</sup>, 64420<sup>0</sup>, 64421<sup>0</sup>, 64425<sup>0</sup>, 64430<sup>0</sup>, 64435<sup>0</sup>, 64445<sup>0</sup>, 64446<sup>0</sup>, 64447<sup>0</sup>, 64448<sup>0</sup>, 64449<sup>0</sup>, 64450<sup>1</sup>, 64451<sup>0</sup>, 64454<sup>1</sup>, 64461<sup>0</sup>, 64462<sup>0</sup>, 64463<sup>0</sup>, 64479<sup>0</sup>, 64480<sup>0</sup>, 64483<sup>0</sup>, 64484<sup>0</sup>, 64486<sup>0</sup>, 64487<sup>0</sup>, 64488<sup>0</sup>, 64489<sup>0</sup>, 64490<sup>0</sup>, 64491<sup>0</sup>, 64492<sup>0</sup>, 64493<sup>0</sup>, 64494<sup>0</sup>, 64495<sup>0</sup>, 64505<sup>0</sup>, 64510<sup>0</sup>, 64517<sup>0</sup>, 64520<sup>0</sup>, 64530<sup>0</sup>, 69990<sup>0</sup>, 92012<sup>1</sup>, 92014<sup>1</sup>, 93000<sup>1</sup>, 93005<sup>1</sup>, 93010<sup>1</sup>, 93040<sup>1</sup>, 93041<sup>1</sup>, 93042<sup>1</sup>, 93318<sup>1</sup>, 93355<sup>1</sup>, 94002<sup>1</sup>, 94200<sup>1</sup>, 94680<sup>1</sup>, 94681<sup>1</sup>, 94690<sup>1</sup>, 95812<sup>1</sup>, 95813<sup>1</sup>, 95816<sup>1</sup>, 95819<sup>1</sup>, 95822<sup>1</sup>, 95829<sup>1</sup>, 95955<sup>1</sup>, 96360<sup>1</sup>, 96361<sup>1</sup>, 96365<sup>1</sup>, 96366<sup>1</sup>, 96367<sup>1</sup>, 96368<sup>1</sup>, 96372<sup>1</sup>, 96374<sup>1</sup>, 96375<sup>1</sup>, 96376<sup>1</sup>, 96377<sup>1</sup>, 96523<sup>0</sup>, 99155<sup>0</sup>, 99156<sup>0</sup>, 99157<sup>0</sup>, 99211<sup>1</sup>, 99212<sup>1</sup>, 99213<sup>1</sup>, 99214<sup>1</sup>, 99215<sup>1</sup>, 99221<sup>1</sup>, 99222<sup>1</sup>, 99223<sup>1</sup>, 99231<sup>1</sup>, 99232<sup>1</sup>, 99233<sup>1</sup>, 99234<sup>1</sup>, 99235<sup>1</sup>, 99236<sup>1</sup>, 99238<sup>1</sup>, 99239<sup>1</sup>, 99242<sup>1</sup>, 99243<sup>1</sup>, 99244<sup>1</sup>, 99245<sup>1</sup>, 99252<sup>1</sup>, 99253<sup>1</sup>, 99254<sup>1</sup>, 99255<sup>1</sup>, 99291<sup>1</sup>, 99292<sup>1</sup>, 99304<sup>1</sup>, 99305<sup>1</sup>, 99306<sup>1</sup>, 99307<sup>1</sup>, 99308<sup>1</sup>, 99309<sup>1</sup>, 99310<sup>1</sup>, 99315<sup>1</sup>, 99316<sup>1</sup>, 99347<sup>1</sup>, 99348<sup>1</sup>, 99349<sup>1</sup>, 99350<sup>1</sup>, 99374<sup>1</sup>, 99375<sup>1</sup>, 99377<sup>1</sup>, 99378<sup>1</sup>, 99446<sup>0</sup>, 99447<sup>0</sup>, 99448<sup>0</sup>, 99449<sup>0</sup>, 99451<sup>0</sup>, 99452<sup>0</sup>, 99495<sup>0</sup>, 99496<sup>0</sup>, G0463<sup>1</sup>, G0471<sup>1</sup>, J0670<sup>1</sup>

### ICD-10-CM Cross References

B95.2, B96.22, E36.8, K68.11, L76.33, L76.34, L76.81, L76.82, O86.00-O86.03, O86.09, O90.2, S80.851D, S80.852D, S80.859D, S80.861D, S80.862D, S80.869D, S91.151D,

S91.152D, S91.153D, S91.154D, S91.155D, S91.156D, S91.159D, S91.211D, S91.212D, S91.213D, S91.214D, S91.215D, S91.216D, S91.219D, T81.40XA-T81.40XS

## 11010

Debridement including removal of foreign material at the site of an open fracture and/or an open dislocation (eg, excisional debridement); skin and subcutaneous tissues

### Clinical Responsibility

When the patient is appropriately prepped and anesthetized, the provider performs prolonged cleansing of the skin and subcutaneous wound associated with an open fracture and/or dislocation. She debrides all foreign material along with other necrotic tissue and excessive amounts of abnormal microbes in these skin and subcutaneous wounds. She uses forceps, a scalpel, or other instruments as needed. The provider removes all these tissues surgically in and around the site of the open fracture and/or dislocation. She examines other soft tissues in the area, for example tendons and ligaments. The provider then performs irrigation of the tissue layers.

### Coding Tips

Use 11011 when the service involves skin, subcutaneous tissue, muscle fascia, and muscle.

Use 11012 when the service involves skin, subcutaneous tissue, muscle fascia, muscle, and bone.

### Fee Schedule Information

**Medicare Fees (National):** Conversion Factor \$32.3465, Facility Fee: \$269.45, Non Facility Fee: \$429.56

**RVU (Facility):** Work RVU 4.19, Practice Exp. RVU 3.40, Malpractice RVU 0.74, Total RVU 8.33

**RVU (Non-Facility):** Work RVU 4.19, Practice Exp. RVU 8.35, Malpractice RVU 0.74, Total RVU 13.28

**MPFS Payment Policy Indicators:** Global Period 010, Preop 10.00%, Intraop 80.00%, Postop 10.00%, MPFS Status Indicator: A,

PC/TC Indicator: 0, Endoscopic Base Code:  
None

Practitioner MUE: 2

## Modifier Allowances

22, 51, 52, 53, 54, 55, 56, 58, 59, 73, 74, 76,  
77, 78, 79, 99, AQ, AR, F1, F2, F3, F4, F5, F6,  
F7, F8, F9, FA, GA, GC, GJ, GR, KX, LT, PD, Q5,  
Q6, QJ, RT, T1, T2, T3, T4, T5, T6, T7, T8, T9,  
TA, XE, XP, XS, XU

## NCCI Alerts (version 31.0)

0213T<sup>0</sup>, 0216T<sup>0</sup>, 0335T<sup>1</sup>, 0490T<sup>1</sup>, 0510T<sup>1</sup>,  
0511T<sup>1</sup>, 0552T<sup>1</sup>, 0565T<sup>1</sup>, 0566T<sup>1</sup>, 0596T<sup>1</sup>,  
0597T<sup>1</sup>, 0656T<sup>1</sup>, 0657T<sup>1</sup>, 0718T<sup>1</sup>, 10030<sup>1</sup>,  
10060<sup>1</sup>, 10120<sup>1</sup>, 10121<sup>1</sup>, 10160<sup>1</sup>, 10180<sup>1</sup>,  
11008<sup>1</sup>, 11055<sup>1</sup>, 11102<sup>1</sup>, 11104<sup>1</sup>, 11106<sup>1</sup>,  
11450<sup>1</sup>, 11451<sup>1</sup>, 11462<sup>1</sup>, 11463<sup>1</sup>, 11470<sup>1</sup>,  
12001<sup>1</sup>, 12002<sup>1</sup>, 12004<sup>1</sup>, 12005<sup>1</sup>, 12006<sup>1</sup>,  
12007<sup>1</sup>, 12011<sup>1</sup>, 12013<sup>1</sup>, 12014<sup>1</sup>, 12015<sup>1</sup>,  
12016<sup>1</sup>, 12020<sup>1</sup>, 12021<sup>1</sup>, 12031<sup>1</sup>, 12032<sup>1</sup>,  
12034<sup>1</sup>, 12035<sup>1</sup>, 12036<sup>1</sup>, 12037<sup>1</sup>, 12041<sup>1</sup>,  
12042<sup>1</sup>, 12044<sup>1</sup>, 12045<sup>1</sup>, 12046<sup>1</sup>, 12047<sup>1</sup>,  
12051<sup>1</sup>, 12052<sup>1</sup>, 12053<sup>1</sup>, 12054<sup>1</sup>, 12055<sup>1</sup>,  
12056<sup>1</sup>, 12057<sup>1</sup>, 13102<sup>1</sup>, 13122<sup>1</sup>, 13133<sup>1</sup>,  
13153<sup>1</sup>, 15002<sup>1</sup>, 15004<sup>1</sup>, 15769<sup>1</sup>, 15851<sup>0</sup>,  
15852<sup>1</sup>, 16000<sup>1</sup>, 16020<sup>1</sup>, 16025<sup>1</sup>, 16030<sup>1</sup>,  
20100<sup>1</sup>, 20101<sup>1</sup>, 20102<sup>1</sup>, 20150<sup>1</sup>, 20200<sup>1</sup>,  
20205<sup>1</sup>, 20206<sup>1</sup>, 20220<sup>1</sup>, 20225<sup>1</sup>, 20240<sup>1</sup>,  
20245<sup>1</sup>, 20250<sup>1</sup>, 20251<sup>1</sup>, 20520<sup>1</sup>, 20525<sup>1</sup>,  
20527<sup>1</sup>, 20551<sup>1</sup>, 20552<sup>1</sup>, 20553<sup>1</sup>, 20560<sup>1</sup>,  
20561<sup>1</sup>, 20604<sup>1</sup>, 20606<sup>1</sup>, 20611<sup>1</sup>, 20661<sup>1</sup>,  
20662<sup>1</sup>, 20663<sup>1</sup>, 20692<sup>1</sup>, 20693<sup>1</sup>, 20802<sup>1</sup>,  
20805<sup>1</sup>, 20808<sup>1</sup>, 20816<sup>1</sup>, 20822<sup>1</sup>, 20824<sup>1</sup>,  
20827<sup>1</sup>, 20838<sup>1</sup>, 20900<sup>1</sup>, 20902<sup>1</sup>, 20910<sup>1</sup>,  
20912<sup>1</sup>, 20920<sup>1</sup>, 20922<sup>1</sup>, 20924<sup>1</sup>, 20955<sup>1</sup>,  
20956<sup>1</sup>, 20957<sup>1</sup>, 20962<sup>1</sup>, 20969<sup>1</sup>, 20970<sup>1</sup>,  
20972<sup>1</sup>, 20973<sup>1</sup>, 21010<sup>1</sup>, 21025<sup>1</sup>, 21026<sup>1</sup>,  
21029<sup>1</sup>, 21030<sup>1</sup>, 21034<sup>1</sup>, 21044<sup>1</sup>, 21045<sup>1</sup>,  
21050<sup>1</sup>, 21060<sup>1</sup>, 21070<sup>1</sup>, 21076<sup>1</sup>, 21077<sup>1</sup>,  
21079<sup>1</sup>, 21080<sup>1</sup>, 21081<sup>1</sup>, 21082<sup>1</sup>, 21083<sup>1</sup>,  
21084<sup>1</sup>, 21085<sup>1</sup>, 21086<sup>1</sup>, 21087<sup>1</sup>, 21088<sup>1</sup>,  
21110<sup>1</sup>, 21120<sup>1</sup>, 21121<sup>1</sup>, 21122<sup>1</sup>, 21123<sup>1</sup>,  
21125<sup>1</sup>, 21127<sup>1</sup>, 21137<sup>1</sup>, 21138<sup>1</sup>, 21139<sup>1</sup>,  
21141<sup>1</sup>, 21142<sup>1</sup>, 21143<sup>1</sup>, 21145<sup>1</sup>, 21146<sup>1</sup>,  
21147<sup>1</sup>, 21150<sup>1</sup>, 21151<sup>1</sup>, 21154<sup>1</sup>, 21155<sup>1</sup>,  
21159<sup>1</sup>, 21160<sup>1</sup>, 21172<sup>1</sup>, 21175<sup>1</sup>, 21179<sup>1</sup>,  
21180<sup>1</sup>, 21181<sup>1</sup>, 21182<sup>1</sup>, 21183<sup>1</sup>, 21184<sup>1</sup>,  
21188<sup>1</sup>, 21193<sup>1</sup>, 21194<sup>1</sup>, 21195<sup>1</sup>, 21196<sup>1</sup>,  
21198<sup>1</sup>, 21199<sup>1</sup>, 21206<sup>1</sup>, 21208<sup>1</sup>, 21209<sup>1</sup>,  
21210<sup>1</sup>, 21215<sup>1</sup>, 21230<sup>1</sup>, 21235<sup>1</sup>, 21240<sup>1</sup>,  
21242<sup>1</sup>, 21243<sup>1</sup>, 21244<sup>1</sup>, 21245<sup>1</sup>, 21246<sup>1</sup>,  
21247<sup>1</sup>, 21248<sup>1</sup>, 21249<sup>1</sup>, 21255<sup>1</sup>, 21256<sup>1</sup>,  
21260<sup>1</sup>, 21261<sup>1</sup>, 21263<sup>1</sup>, 21267<sup>1</sup>, 21268<sup>1</sup>,  
21270<sup>1</sup>, 21275<sup>1</sup>, 21280<sup>1</sup>, 21501<sup>1</sup>, 21550<sup>1</sup>,  
21600<sup>1</sup>, 21610<sup>1</sup>, 21615<sup>1</sup>, 21616<sup>1</sup>, 21620<sup>1</sup>,  
21627<sup>1</sup>, 21630<sup>1</sup>, 21700<sup>1</sup>, 21705<sup>1</sup>, 21720<sup>1</sup>,  
21725<sup>1</sup>, 21740<sup>1</sup>, 21742<sup>1</sup>, 21743<sup>1</sup>, 21750<sup>1</sup>,  
21925<sup>1</sup>, 22100<sup>1</sup>, 22101<sup>1</sup>, 22102<sup>1</sup>, 22110<sup>1</sup>,  
22112<sup>1</sup>, 22114<sup>1</sup>, 22210<sup>1</sup>, 22212<sup>1</sup>, 22214<sup>1</sup>,  
22216<sup>1</sup>, 22220<sup>1</sup>, 22222<sup>1</sup>, 22224<sup>1</sup>, 22226<sup>1</sup>,

22548<sup>1</sup>, 22554<sup>1</sup>, 22556<sup>1</sup>, 22558<sup>1</sup>, 22585<sup>1</sup>,  
22590<sup>1</sup>, 22595<sup>1</sup>, 22600<sup>1</sup>, 22610<sup>1</sup>, 22612<sup>1</sup>,  
22614<sup>1</sup>, 22630<sup>1</sup>, 22632<sup>1</sup>, 22800<sup>1</sup>, 22802<sup>1</sup>,  
22804<sup>1</sup>, 22808<sup>1</sup>, 22810<sup>1</sup>, 22812<sup>1</sup>, 22830<sup>1</sup>,  
22840<sup>1</sup>, 22842<sup>1</sup>, 22843<sup>1</sup>, 22844<sup>1</sup>, 22845<sup>1</sup>,  
22846<sup>1</sup>, 22847<sup>1</sup>, 22848<sup>1</sup>, 22849<sup>1</sup>, 22850<sup>1</sup>,  
22852<sup>1</sup>, 22855<sup>1</sup>, 23020<sup>1</sup>, 23030<sup>1</sup>, 23035<sup>1</sup>,  
23040<sup>1</sup>, 23044<sup>1</sup>, 23100<sup>1</sup>, 23101<sup>1</sup>, 23105<sup>1</sup>,  
23106<sup>1</sup>, 23120<sup>1</sup>, 23125<sup>1</sup>, 23130<sup>1</sup>, 23140<sup>1</sup>,  
23145<sup>1</sup>, 23146<sup>1</sup>, 23150<sup>1</sup>, 23155<sup>1</sup>, 23170<sup>1</sup>,  
23172<sup>1</sup>, 23180<sup>1</sup>, 23182<sup>1</sup>, 23184<sup>1</sup>, 23190<sup>1</sup>,  
23195<sup>1</sup>, 23333<sup>1</sup>, 23334<sup>1</sup>, 23335<sup>1</sup>, 23395<sup>1</sup>,  
23397<sup>1</sup>, 23400<sup>1</sup>, 23405<sup>1</sup>, 23406<sup>1</sup>, 23410<sup>1</sup>,  
23412<sup>1</sup>, 23415<sup>1</sup>, 23420<sup>1</sup>, 23430<sup>1</sup>, 23440<sup>1</sup>,  
23450<sup>1</sup>, 23455<sup>1</sup>, 23460<sup>1</sup>, 23462<sup>1</sup>, 23465<sup>1</sup>,  
23466<sup>1</sup>, 23470<sup>1</sup>, 23472<sup>1</sup>, 23480<sup>1</sup>, 23485<sup>1</sup>,  
23490<sup>1</sup>, 23491<sup>1</sup>, 23800<sup>1</sup>, 23802<sup>1</sup>, 23900<sup>1</sup>,  
23920<sup>1</sup>, 23921<sup>1</sup>, 23930<sup>1</sup>, 23931<sup>1</sup>, 24066<sup>1</sup>,  
24100<sup>1</sup>, 24101<sup>1</sup>, 24102<sup>1</sup>, 24110<sup>1</sup>, 24115<sup>1</sup>,  
24116<sup>1</sup>, 24120<sup>1</sup>, 24125<sup>1</sup>, 24126<sup>1</sup>, 24130<sup>1</sup>,  
24134<sup>1</sup>, 24136<sup>1</sup>, 24138<sup>1</sup>, 24140<sup>1</sup>, 24145<sup>1</sup>,  
24147<sup>1</sup>, 24149<sup>1</sup>, 24155<sup>1</sup>, 24160<sup>1</sup>, 24164<sup>1</sup>,  
24201<sup>1</sup>, 24300<sup>1</sup>, 24301<sup>1</sup>, 24305<sup>1</sup>, 24310<sup>1</sup>,  
24320<sup>1</sup>, 24330<sup>1</sup>, 24331<sup>1</sup>, 24340<sup>1</sup>, 24341<sup>1</sup>,  
24342<sup>1</sup>, 24343<sup>1</sup>, 24344<sup>1</sup>, 24345<sup>1</sup>, 24346<sup>1</sup>,  
24360<sup>1</sup>, 24361<sup>1</sup>, 24362<sup>1</sup>, 24363<sup>1</sup>, 24365<sup>1</sup>,  
24366<sup>1</sup>, 24400<sup>1</sup>, 24410<sup>1</sup>, 24420<sup>1</sup>, 24430<sup>1</sup>,  
24435<sup>1</sup>, 24470<sup>1</sup>, 24495<sup>1</sup>, 24498<sup>1</sup>, 24800<sup>1</sup>,  
24802<sup>1</sup>, 24900<sup>1</sup>, 24920<sup>1</sup>, 24925<sup>1</sup>, 24930<sup>1</sup>,  
24931<sup>1</sup>, 24935<sup>1</sup>, 24940<sup>1</sup>, 25031<sup>1</sup>, 25065<sup>1</sup>,  
25066<sup>1</sup>, 25085<sup>1</sup>, 25105<sup>1</sup>, 25107<sup>1</sup>, 25112<sup>1</sup>,  
25116<sup>1</sup>, 25119<sup>1</sup>, 25120<sup>1</sup>, 25125<sup>1</sup>, 25126<sup>1</sup>,  
25130<sup>1</sup>, 25135<sup>1</sup>, 25136<sup>1</sup>, 25145<sup>1</sup>, 25150<sup>1</sup>,  
25151<sup>1</sup>, 25210<sup>1</sup>, 25215<sup>1</sup>, 25230<sup>1</sup>, 25240<sup>1</sup>,  
25390<sup>1</sup>, 25391<sup>1</sup>, 25392<sup>1</sup>, 25393<sup>1</sup>, 25400<sup>1</sup>,  
25405<sup>1</sup>, 25415<sup>1</sup>, 25420<sup>1</sup>, 25425<sup>1</sup>, 25426<sup>1</sup>,  
25440<sup>1</sup>, 25441<sup>1</sup>, 25442<sup>1</sup>, 25443<sup>1</sup>, 25444<sup>1</sup>,  
25445<sup>1</sup>, 25446<sup>1</sup>, 25447<sup>1</sup>, 25449<sup>1</sup>, 25450<sup>1</sup>,  
25455<sup>1</sup>, 25490<sup>1</sup>, 25491<sup>1</sup>, 25492<sup>1</sup>, 25800<sup>1</sup>,  
25805<sup>1</sup>, 25810<sup>1</sup>, 25820<sup>1</sup>, 25825<sup>1</sup>, 25830<sup>1</sup>,  
25900<sup>1</sup>, 25905<sup>1</sup>, 25907<sup>1</sup>, 25909<sup>1</sup>, 25915<sup>1</sup>,  
25920<sup>1</sup>, 25922<sup>1</sup>, 25924<sup>1</sup>, 25927<sup>1</sup>, 25929<sup>1</sup>,  
25931<sup>1</sup>, 26010<sup>1</sup>, 26011<sup>1</sup>, 26025<sup>1</sup>, 26030<sup>1</sup>,  
26034<sup>1</sup>, 26035<sup>1</sup>, 26037<sup>1</sup>, 26045<sup>1</sup>, 26121<sup>1</sup>,  
26123<sup>1</sup>, 26125<sup>1</sup>, 26130<sup>1</sup>, 26135<sup>1</sup>, 26140<sup>1</sup>,  
26145<sup>1</sup>, 26412<sup>1</sup>, 26415<sup>1</sup>, 26416<sup>1</sup>, 26433<sup>1</sup>,  
26434<sup>1</sup>, 26437<sup>1</sup>, 26440<sup>1</sup>, 26442<sup>1</sup>, 26445<sup>1</sup>,  
26449<sup>1</sup>, 26471<sup>1</sup>, 26474<sup>1</sup>, 26476<sup>1</sup>, 26477<sup>1</sup>,  
26478<sup>1</sup>, 26479<sup>1</sup>, 26480<sup>1</sup>, 26483<sup>1</sup>, 26485<sup>1</sup>,  
26489<sup>1</sup>, 26490<sup>1</sup>, 26492<sup>1</sup>, 26494<sup>1</sup>, 26496<sup>1</sup>,  
26497<sup>1</sup>, 26498<sup>1</sup>, 26500<sup>1</sup>, 26502<sup>1</sup>, 26508<sup>1</sup>,  
26510<sup>1</sup>, 26516<sup>1</sup>, 26517<sup>1</sup>, 26518<sup>1</sup>, 26520<sup>1</sup>,  
26525<sup>1</sup>, 26530<sup>1</sup>, 26531<sup>1</sup>, 26535<sup>1</sup>, 26536<sup>1</sup>,  
26540<sup>1</sup>, 26541<sup>1</sup>, 26542<sup>1</sup>, 26545<sup>1</sup>, 26546<sup>1</sup>,  
26548<sup>1</sup>, 26550<sup>1</sup>, 26551<sup>1</sup>, 26553<sup>1</sup>, 26554<sup>1</sup>,  
26555<sup>1</sup>, 26556<sup>1</sup>, 26560<sup>1</sup>, 26561<sup>1</sup>, 26562<sup>1</sup>,  
26565<sup>1</sup>, 26567<sup>1</sup>, 26568<sup>1</sup>, 26580<sup>1</sup>, 26587<sup>1</sup>,  
26590<sup>1</sup>, 26593<sup>1</sup>, 26596<sup>1</sup>, 26820<sup>1</sup>, 26841<sup>1</sup>,  
26842<sup>1</sup>, 26843<sup>1</sup>, 26844<sup>1</sup>, 26850<sup>1</sup>, 26852<sup>1</sup>,  
26860<sup>1</sup>, 26862<sup>1</sup>, 26910<sup>1</sup>, 26951<sup>1</sup>, 26952<sup>1</sup>,  
27041<sup>1</sup>, 27052<sup>1</sup>, 27054<sup>1</sup>, 27060<sup>1</sup>, 27062<sup>1</sup>,  
27065<sup>1</sup>, 27066<sup>1</sup>, 27138<sup>1</sup>, 27140<sup>1</sup>, 27146<sup>1</sup>,

27147<sup>1</sup>, 27151<sup>1</sup>, 27156<sup>1</sup>, 27158<sup>1</sup>, 27161<sup>1</sup>,  
27165<sup>1</sup>, 27170<sup>1</sup>, 27175<sup>1</sup>, 27176<sup>1</sup>, 27177<sup>1</sup>,  
27178<sup>1</sup>, 27179<sup>1</sup>, 27181<sup>1</sup>, 27185<sup>1</sup>, 27187<sup>1</sup>,  
27280<sup>1</sup>, 27282<sup>1</sup>, 27284<sup>1</sup>, 27286<sup>1</sup>, 27290<sup>1</sup>,  
27295<sup>1</sup>, 27301<sup>1</sup>, 27303<sup>1</sup>, 27305<sup>1</sup>, 27306<sup>1</sup>,  
27307<sup>1</sup>, 27310<sup>1</sup>, 27324<sup>1</sup>, 27330<sup>1</sup>, 27331<sup>1</sup>,  
27332<sup>1</sup>, 27333<sup>1</sup>, 27334<sup>1</sup>, 27335<sup>1</sup>, 27345<sup>1</sup>,  
27347<sup>1</sup>, 27350<sup>1</sup>, 27355<sup>1</sup>, 27356<sup>1</sup>, 27357<sup>1</sup>,  
27358<sup>1</sup>, 27360<sup>1</sup>, 27369<sup>1</sup>, 27372<sup>1</sup>, 27380<sup>1</sup>,  
27381<sup>1</sup>, 27385<sup>1</sup>, 27386<sup>1</sup>, 27390<sup>1</sup>, 27391<sup>1</sup>,  
27392<sup>1</sup>, 27393<sup>1</sup>, 27394<sup>1</sup>, 27395<sup>1</sup>, 27396<sup>1</sup>,  
27397<sup>1</sup>, 27400<sup>1</sup>, 27403<sup>1</sup>, 27405<sup>1</sup>, 27407<sup>1</sup>,  
27409<sup>1</sup>, 27418<sup>1</sup>, 27420<sup>1</sup>, 27422<sup>1</sup>, 27424<sup>1</sup>,  
27425<sup>1</sup>, 27427<sup>1</sup>, 27428<sup>1</sup>, 27429<sup>1</sup>, 27430<sup>1</sup>,  
27435<sup>1</sup>, 27437<sup>1</sup>, 27438<sup>1</sup>, 27440<sup>1</sup>, 27441<sup>1</sup>,  
27442<sup>1</sup>, 27443<sup>1</sup>, 27445<sup>1</sup>, 27446<sup>1</sup>, 27447<sup>1</sup>,  
27448<sup>1</sup>, 27450<sup>1</sup>, 27454<sup>1</sup>, 27455<sup>1</sup>, 27457<sup>1</sup>,  
27465<sup>1</sup>, 27466<sup>1</sup>, 27468<sup>1</sup>, 27470<sup>1</sup>, 27472<sup>1</sup>,  
27475<sup>1</sup>, 27477<sup>1</sup>, 27479<sup>1</sup>, 27485<sup>1</sup>, 27486<sup>1</sup>,  
27487<sup>1</sup>, 27488<sup>1</sup>, 27495<sup>1</sup>, 27496<sup>1</sup>, 27497<sup>1</sup>,  
27498<sup>1</sup>, 27580<sup>1</sup>, 27590<sup>1</sup>, 27591<sup>1</sup>, 27592<sup>1</sup>,  
27594<sup>1</sup>, 27596<sup>1</sup>, 27598<sup>1</sup>, 27600<sup>1</sup>, 27601<sup>1</sup>,  
27602<sup>1</sup>, 27603<sup>1</sup>, 27604<sup>1</sup>, 27607<sup>1</sup>, 27610<sup>1</sup>,  
27612<sup>1</sup>, 27620<sup>1</sup>, 27625<sup>1</sup>, 27626<sup>1</sup>, 27630<sup>1</sup>,  
27635<sup>1</sup>, 27637<sup>1</sup>, 27638<sup>1</sup>, 27650<sup>1</sup>, 27652<sup>1</sup>,  
27654<sup>1</sup>, 27656<sup>1</sup>, 27658<sup>1</sup>, 27659<sup>1</sup>, 27664<sup>1</sup>,  
27665<sup>1</sup>, 27675<sup>1</sup>, 27676<sup>1</sup>, 27680<sup>1</sup>, 27681<sup>1</sup>,  
27685<sup>1</sup>, 27686<sup>1</sup>, 27687<sup>1</sup>, 27690<sup>1</sup>, 27691<sup>1</sup>,  
27695<sup>1</sup>, 27696<sup>1</sup>, 27698<sup>1</sup>, 27700<sup>1</sup>, 27702<sup>1</sup>,  
27703<sup>1</sup>, 27704<sup>1</sup>, 27705<sup>1</sup>, 27709<sup>1</sup>, 27712<sup>1</sup>,  
27715<sup>1</sup>, 27720<sup>1</sup>, 27722<sup>1</sup>, 27724<sup>1</sup>, 27725<sup>1</sup>,  
27727<sup>1</sup>, 27730<sup>1</sup>, 27732<sup>1</sup>, 27734<sup>1</sup>, 27740<sup>1</sup>,  
27742<sup>1</sup>, 27745<sup>1</sup>, 27870<sup>1</sup>, 27871<sup>1</sup>, 27880<sup>1</sup>,  
27881<sup>1</sup>, 27882<sup>1</sup>, 27884<sup>1</sup>, 27886<sup>1</sup>, 27888<sup>1</sup>,  
27889<sup>1</sup>, 27892<sup>1</sup>, 27893<sup>1</sup>, 27894<sup>1</sup>, 28003<sup>1</sup>,  
28005<sup>1</sup>, 28008<sup>1</sup>, 28020<sup>1</sup>, 28022<sup>1</sup>, 28035<sup>1</sup>,  
28055<sup>1</sup>, 28060<sup>1</sup>, 28062<sup>1</sup>, 28070<sup>1</sup>, 28072<sup>1</sup>,  
28086<sup>1</sup>, 28090<sup>1</sup>, 28100<sup>1</sup>, 28102<sup>1</sup>, 28103<sup>1</sup>,  
28104<sup>1</sup>, 28106<sup>1</sup>, 28107<sup>1</sup>, 28111<sup>1</sup>, 28112<sup>1</sup>,  
28113<sup>1</sup>, 28114<sup>1</sup>, 28116<sup>1</sup>, 28118<sup>1</sup>, 28119<sup>1</sup>,  
28120<sup>1</sup>, 28122<sup>1</sup>, 28124<sup>1</sup>, 28130<sup>1</sup>, 28140<sup>1</sup>,  
28192<sup>1</sup>, 28193<sup>1</sup>, 28200<sup>1</sup>, 28202<sup>1</sup>, 28210<sup>1</sup>,  
28220<sup>1</sup>, 28222<sup>1</sup>, 28226<sup>1</sup>, 28238<sup>1</sup>, 28250<sup>1</sup>,  
28260<sup>1</sup>, 28261<sup>1</sup>, 28262<sup>1</sup>, 28264<sup>1</sup>, 28270<sup>1</sup>,  
28280<sup>1</sup>, 28285<sup>1</sup>, 28286<sup>1</sup>, 28288<sup>1</sup>, 28289<sup>1</sup>,  
28292<sup>1</sup>, 28296<sup>1</sup>, 28297<sup>1</sup>, 28298<sup>1</sup>, 28299<sup>1</sup>,  
28300<sup>1</sup>, 28302<sup>1</sup>, 28304<sup>1</sup>, 28305<sup>1</sup>, 28306<sup>1</sup>,  
28307<sup>1</sup>, 28308<sup>1</sup>, 28309<sup>1</sup>, 28310<sup>1</sup>, 28312<sup>1</sup>,  
28313<sup>1</sup>, 28315<sup>1</sup>, 28320<sup>1</sup>, 28322<sup>1</sup>, 28340<sup>1</sup>,  
28341<sup>1</sup>, 28345<sup>1</sup>, 28360<sup>1</sup>, 28705<sup>1</sup>, 28715<sup>1</sup>,  
28725<sup>1</sup>, 28730<sup>1</sup>, 28735<sup>1</sup>, 28737<sup>1</sup>, 28740<sup>1</sup>,  
28750<sup>1</sup>, 28755<sup>1</sup>, 28760<sup>1</sup>, 28800<sup>1</sup>, 28805<sup>1</sup>,  
28810<sup>1</sup>, 29000<sup>1</sup>, 29010<sup>1</sup>, 29015<sup>1</sup>, 29035<sup>1</sup>,  
29040<sup>1</sup>, 29044<sup>1</sup>, 29046<sup>1</sup>, 29049<sup>1</sup>, 29055<sup>1</sup>,  
29058<sup>1</sup>, 29065<sup>1</sup>, 29075<sup>1</sup>, 29085<sup>1</sup>, 29086<sup>1</sup>,  
29105<sup>1</sup>, 29125<sup>1</sup>, 29126<sup>1</sup>, 29130<sup>1</sup>, 29131<sup>1</sup>,  
29200<sup>1</sup>, 29240<sup>1</sup>, 29260<sup>1</sup>, 29280<sup>1</sup>, 29305<sup>1</sup>,  
29325<sup>1</sup>, 29345<sup>1</sup>, 29355<sup>1</sup>, 29358<sup>1</sup>, 29365<sup>1</sup>,  
29405<sup>1</sup>, 29425<sup>1</sup>, 29435<sup>1</sup>, 29440<sup>1</sup>, 29445<sup>1</sup>,  
29450<sup>1</sup>, 29505<sup>1</sup>, 29515<sup>1</sup>, 29520<sup>1</sup>, 29530<sup>1</sup>,  
29540<sup>1</sup>, 29550<sup>1</sup>, 29580<sup>1</sup>, 29581<sup>1</sup>, 29584<sup>1</sup>,  
29800<sup>1</sup>, 29804<sup>1</sup>, 29805<sup>1</sup>, 29806<sup>1</sup>, 29807<sup>1</sup>,



**22214**

Osteotomy of spine, posterior or posterolateral approach, 1 vertebral segment; lumbar

**Clinical Responsibility**

When the patient is appropriately prepped and anesthetized, the provider makes an incision into the skin overlying the affected vertebra. He dissects down through the muscle and fascia to expose the spinous process and lamina of the central vertebra in question and removes them. He then removes facets, pedicles, and lateral bone to protect the nerve roots, and undercuts the laminae above and below to protect the dura and central neural elements, or spinal cord. He then realigns the spine. The provider then irrigates the area, checks for bleeding, removes any instruments, and closes the incision.

**Coding Tips**

Report 22214 when the provider performs an osteotomy on one vertebral segment. If he addresses additional segments, report add-on code 22216, Osteotomy of spine, posterior or posterolateral approach, 1 vertebral segment, each additional vertebral segment, list separately in addition to primary procedure.

Decompression of the spinal cord, cauda equina, and/or single or multiple nerve roots is implied in osteotomies and the codes for osteotomies are inclusive of these. Osteotomy procedures entail removing a piece of the vertebra to correct spinal alignment; these codes replace laminectomy, laminotomy, and discectomy procedures and should not be reported at the same levels.

**Fee Schedule Information**

**Medicare Fees (National):** Conversion Factor \$32.3465, Facility Fee: \$1,496.35, Non Facility Fee: \$1,496.35

**RVU (Facility):** Work RVU 21.02, Practice Exp. RVU 19.07, Malpractice RVU 6.17, Total RVU 46.26

**RVU (Non-Facility):** Work RVU 21.02, Practice Exp. RVU 19.07, Malpractice RVU 6.17, Total RVU 46.26

**MPFS Payment Policy Indicators:** Global Period 090, Preop 10.00%, Intraop 69.00%, Postop 21.00%, MPFS Status Indicator: A, PC/TC Indicator: 0, Endoscopic Base Code: None

Practitioner MUE: 1

**Modifier Allowances**

22, 51, 52, 53, 54, 55, 56, 58, 59, 62, 63, 76, 77, 78, 79, 80, 81, 82, 99, AQ, AR, AS, CR, ET, GA, GC, GJ, GR, KX, Q5, Q6, QJ, XE, XP, XS, XU

**NCCI Alerts (version 31.0)**

0213T<sup>0</sup>, 0216T<sup>0</sup>, 0275T<sup>1</sup>, 0333T<sup>0</sup>, 0464T<sup>0</sup>, 0565T<sup>1</sup>, 0596T<sup>1</sup>, 0597T<sup>1</sup>, 0708T<sup>1</sup>, 0709T<sup>1</sup>, 1100<sup>1</sup>, 1100<sup>1</sup>, 1100<sup>1</sup>, 1100<sup>1</sup>, 1100<sup>1</sup>, 1100<sup>1</sup>, 1104<sup>2</sup>, 1104<sup>3</sup>, 1104<sup>4</sup>, 1104<sup>5</sup>, 1104<sup>6</sup>, 1104<sup>7</sup>, 1200<sup>1</sup>, 1200<sup>2</sup>, 1200<sup>4</sup>, 1200<sup>5</sup>, 1200<sup>6</sup>, 1200<sup>7</sup>, 1201<sup>1</sup>, 1201<sup>3</sup>, 1201<sup>4</sup>, 1201<sup>5</sup>, 1201<sup>6</sup>, 1201<sup>7</sup>, 1201<sup>8</sup>, 1202<sup>1</sup>, 1202<sup>1</sup>, 1203<sup>1</sup>, 1203<sup>2</sup>, 1203<sup>4</sup>, 1203<sup>5</sup>, 1203<sup>6</sup>, 1203<sup>7</sup>, 1204<sup>1</sup>, 1204<sup>2</sup>, 1204<sup>4</sup>, 1204<sup>5</sup>, 1204<sup>6</sup>, 1204<sup>7</sup>, 1205<sup>1</sup>, 1205<sup>2</sup>, 1205<sup>3</sup>, 1205<sup>4</sup>, 1205<sup>5</sup>, 1205<sup>6</sup>, 1205<sup>7</sup>, 1310<sup>1</sup>, 1310<sup>1</sup>, 1310<sup>2</sup>, 1312<sup>1</sup>, 1312<sup>1</sup>, 1312<sup>2</sup>, 1313<sup>1</sup>, 1313<sup>2</sup>, 1313<sup>3</sup>, 1315<sup>1</sup>, 1315<sup>2</sup>, 1315<sup>3</sup>, 1576<sup>9</sup>, 2210<sup>2</sup>, 2211<sup>4</sup>, 2221<sup>2</sup>, 2222<sup>4</sup>, 2232<sup>5</sup>, 2250<sup>5</sup>, 2286<sup>7</sup>, 2286<sup>8</sup>, 2286<sup>9</sup>, 2287<sup>0</sup>, 3600<sup>1</sup>, 3640<sup>1</sup>, 3640<sup>5</sup>, 3640<sup>6</sup>, 3641<sup>0</sup>, 3642<sup>0</sup>, 3642<sup>5</sup>, 3643<sup>0</sup>, 3644<sup>0</sup>, 3659<sup>1</sup>, 3659<sup>2</sup>, 3660<sup>1</sup>, 3664<sup>0</sup>, 3822<sup>0</sup>, 3822<sup>2</sup>, 3823<sup>0</sup>, 3823<sup>2</sup>, 4375<sup>2</sup>, 5170<sup>1</sup>, 5170<sup>2</sup>, 5170<sup>3</sup>, 6232<sup>0</sup>, 6232<sup>1</sup>, 6232<sup>2</sup>, 6232<sup>3</sup>, 6232<sup>4</sup>, 6232<sup>5</sup>, 6232<sup>6</sup>, 6232<sup>7</sup>, 6238<sup>0</sup>, 6300<sup>5</sup>, 6301<sup>7</sup>, 6303<sup>0</sup>, 6304<sup>7</sup>, 6305<sup>2</sup>, 6370<sup>7</sup>, 6370<sup>9</sup>, 6440<sup>0</sup>, 6440<sup>5</sup>, 6440<sup>8</sup>, 6441<sup>5</sup>, 6441<sup>6</sup>, 6441<sup>7</sup>, 6441<sup>8</sup>, 6442<sup>0</sup>, 6442<sup>1</sup>, 6442<sup>5</sup>, 6443<sup>0</sup>, 6443<sup>5</sup>, 6444<sup>5</sup>, 6444<sup>6</sup>, 6444<sup>7</sup>, 6444<sup>8</sup>, 6444<sup>9</sup>, 6445<sup>0</sup>, 6445<sup>1</sup>, 6445<sup>4</sup>, 6446<sup>1</sup>, 6446<sup>2</sup>, 6446<sup>3</sup>, 6447<sup>9</sup>, 6448<sup>0</sup>, 6448<sup>3</sup>, 6448<sup>4</sup>, 6448<sup>6</sup>, 6448<sup>7</sup>, 6448<sup>8</sup>, 6448<sup>9</sup>, 6449<sup>0</sup>, 6449<sup>1</sup>, 6449<sup>2</sup>, 6449<sup>3</sup>, 6449<sup>4</sup>, 6449<sup>5</sup>, 6450<sup>5</sup>, 6451<sup>0</sup>, 6451<sup>7</sup>, 6452<sup>0</sup>, 6453<sup>0</sup>, 6999<sup>0</sup>, 7600<sup>1</sup>, 7700<sup>1</sup>, 7700<sup>2</sup>, 9201<sup>2</sup>, 9201<sup>4</sup>, 9265<sup>2</sup>, 9265<sup>3</sup>, 9300<sup>1</sup>, 9300<sup>5</sup>, 9301<sup>0</sup>, 9304<sup>0</sup>, 9304<sup>1</sup>, 9304<sup>2</sup>, 9331<sup>8</sup>, 9335<sup>5</sup>, 9400<sup>2</sup>, 9420<sup>1</sup>, 9468<sup>0</sup>, 9468<sup>1</sup>, 9469<sup>0</sup>, 9581<sup>2</sup>, 9581<sup>3</sup>, 9581<sup>6</sup>, 9581<sup>9</sup>, 9582<sup>2</sup>, 9582<sup>9</sup>, 9586<sup>0</sup>, 9586<sup>1</sup>, 9586<sup>3</sup>, 9586<sup>4</sup>, 9586<sup>5</sup>, 9586<sup>6</sup>, 9586<sup>7</sup>, 9586<sup>8</sup>, 9586<sup>9</sup>, 9587<sup>0</sup>, 9590<sup>7</sup>, 9590<sup>8</sup>, 9590<sup>9</sup>, 9591<sup>0</sup>, 9591<sup>1</sup>, 9591<sup>2</sup>, 9591<sup>3</sup>, 9592<sup>5</sup>, 9592<sup>6</sup>, 9592<sup>7</sup>, 9592<sup>8</sup>, 9592<sup>9</sup>, 9593<sup>0</sup>, 9593<sup>3</sup>, 9593<sup>7</sup>, 9593<sup>8</sup>, 9593<sup>9</sup>, 9594<sup>0</sup>, 9595<sup>5</sup>, 9636<sup>0</sup>, 9636<sup>1</sup>, 9636<sup>5</sup>, 9636<sup>6</sup>, 9636<sup>7</sup>, 9636<sup>8</sup>, 9637<sup>2</sup>, 9637<sup>4</sup>, 9637<sup>5</sup>, 9637<sup>6</sup>, 9637<sup>7</sup>, 9652<sup>3</sup>, 9759<sup>7</sup>, 9759<sup>8</sup>, 9760<sup>2</sup>, 9915<sup>5</sup>, 9915<sup>6</sup>, 9915<sup>7</sup>, 9921<sup>1</sup>, 9921<sup>2</sup>, 9921<sup>3</sup>, 9921<sup>4</sup>, 9921<sup>5</sup>, 9922<sup>1</sup>, 9922<sup>2</sup>, 9922<sup>3</sup>, 9923<sup>1</sup>, 9923<sup>2</sup>, 9923<sup>3</sup>, 9923<sup>4</sup>, 9923<sup>5</sup>, 9923<sup>6</sup>, 9923<sup>8</sup>, 9923<sup>9</sup>, 9924<sup>2</sup>, 9924<sup>3</sup>, 9924<sup>4</sup>, 9924<sup>5</sup>, 9925<sup>2</sup>, 9925<sup>3</sup>, 9925<sup>4</sup>, 9925<sup>5</sup>, 9929<sup>1</sup>, 9929<sup>2</sup>, 9930<sup>4</sup>, 9930<sup>5</sup>, 9930<sup>6</sup>,

9930<sup>7</sup>, 9930<sup>8</sup>, 9930<sup>9</sup>, 9931<sup>0</sup>, 9931<sup>5</sup>, 9931<sup>6</sup>, 9934<sup>7</sup>, 9934<sup>8</sup>, 9934<sup>9</sup>, 9935<sup>0</sup>, 9937<sup>4</sup>, 9937<sup>5</sup>, 9937<sup>7</sup>, 9937<sup>8</sup>, 9944<sup>6</sup>, 9944<sup>7</sup>, 9944<sup>8</sup>, 9944<sup>9</sup>, 9945<sup>0</sup>, 9945<sup>2</sup>, 9949<sup>5</sup>, 9949<sup>6</sup>, G027<sup>6</sup>, G045<sup>3</sup>, G046<sup>3</sup>, G047<sup>1</sup>

**ICD-10-CM Cross References**

B91, E64.3, G14, M40.00, M40.05, M40.10, M40.15, M40.205, M40.209, M40.295, M40.299, M40.35-M40.37, M40.40-M40.47, M40.50-M40.57, M41.00-M41.08, M41.115-M41.117, M41.125-M41.127, M41.20-M41.27, M41.30, M41.35, M41.40-M41.47, M41.50-M41.57, M41.80-M41.87, M41.9, M42.00-M42.08, M43.8X5-M43.8X9, M45.5-M45.9, M48.30-M48.38, M48.40XA, M48.45XA, M48.46XA, M48.47XA, M48.50XA, M48.8X5-M48.8X8, M49.80-M49.88, M51.06, M51.26, M51.27, M51.35, M51.360-M51.369, M51.370-M51.379, M80.08XA, M84.30XA, M84.38XA, M84.48XA, M84.68XA, M85.00, M85.40, M85.50, M85.60, M88.9, M90.60, M96.2-M96.5, M96.842, M96.843, M99.83, Q76.2, Q76.415, Q76.419, Q76.425-Q76.427, Q76.49, Q85.01, S32.009A, S32.009B, S32.9XXS

**+22216**

Osteotomy of spine, posterior or posterolateral approach, 1 vertebral segment; each additional vertebral segment (List separately in addition to primary procedure)

**Clinical Responsibility**

When the patient is appropriately prepped and anesthetized, and having undergone an initial osteotomy, the provider removes the spinous process and lamina of the vertebra in question. He then removes facets, pedicles, and lateral bone to protect the nerve roots. He undercuts the laminar surfaces above and below to protect the spinal cord. He then continues the original procedure to completion, with assessment of the alignment and closure of the wound.

**Coding Tips**

You should report this add-on code once for each segment that the provider addresses after the first one. For the first segment, select a code from the range of codes 22210 to 22214, Osteotomy procedures on the spine, vertebral column range.

## Fee Schedule Information

**Medicare Fees (National):** Conversion Factor \$32.3465, Facility Fee: \$352.58, Non Facility Fee: \$352.58

**RVU (Facility):** Work RVU 6.03, Practice Exp. RVU 3.09, Malpractice RVU 1.78, Total RVU 10.90

**RVU (Non-Facility):** Work RVU 6.03, Practice Exp. RVU 3.09, Malpractice RVU 1.78, Total RVU 10.90

**MPFS Payment Policy Indicators:** Global Period ZZZ, Preop 0.00%, Intraop 0.00%, Postop 0.00%, MPFS Status Indicator: A, PC/TC Indicator: 0, Endoscopic Base Code: None

**Practitioner MUE:** 6

## Modifier Allowances

52, 53, 58, 59, 62, 63, 76, 77, 78, 79, 80, 81, 82, 99, AQ, AR, AS, CR, ET, GA, GC, GJ, GR, KX, Q5, Q6, QJ, XE, XP, XS, XU

## NCCI Alerts (version 31.0)

0333T<sup>0</sup>, 0464T<sup>0</sup>, 11000<sup>1</sup>, 11001<sup>1</sup>, 11004<sup>1</sup>, 11005<sup>1</sup>, 11006<sup>1</sup>, 11042<sup>1</sup>, 11043<sup>1</sup>, 11044<sup>1</sup>, 11045<sup>1</sup>, 11046<sup>1</sup>, 11047<sup>1</sup>, 36591<sup>0</sup>, 36592<sup>0</sup>, 38220<sup>0</sup>, 38222<sup>0</sup>, 38230<sup>0</sup>, 38232<sup>0</sup>, 63707<sup>1</sup>, 63709<sup>1</sup>, 92652<sup>0</sup>, 92653<sup>0</sup>, 95822<sup>0</sup>, 95860<sup>0</sup>, 95861<sup>0</sup>, 95863<sup>0</sup>, 95864<sup>0</sup>, 95865<sup>0</sup>, 95866<sup>0</sup>, 95867<sup>0</sup>, 95868<sup>0</sup>, 95869<sup>0</sup>, 95907<sup>0</sup>, 95908<sup>0</sup>, 95909<sup>0</sup>, 95910<sup>0</sup>, 95911<sup>0</sup>, 95912<sup>0</sup>, 95913<sup>0</sup>, 95925<sup>0</sup>, 95926<sup>0</sup>, 95927<sup>0</sup>, 95930<sup>0</sup>, 95933<sup>0</sup>, 95937<sup>0</sup>, 95938<sup>0</sup>, 95939<sup>0</sup>, 95940<sup>0</sup>, 96523<sup>0</sup>, 97597<sup>1</sup>, 97598<sup>1</sup>, 97602<sup>1</sup>, G0453<sup>0</sup>

## ICD-10-CM Cross References

A18.01, B91, E64.3, G14, M40.00-M40.05, M40.10-M40.15, M40.202-M40.209, M40.292-M40.299, M40.35-M40.37, M40.40-M40.47, M40.50-M40.57, M41.00-M41.08, M41.112-M41.117, M41.122-M41.127, M41.20-M41.27, M41.30-M41.35, M41.40-M41.47, M41.50-M41.57, M41.80-M41.87, M41.9, M42.00-M42.09, M42.10-M42.19, M43.8X1-M43.8X9, M45.0-M45.9, M48.30-M48.38, M48.40XA, M48.41XA, M48.42XA, M48.43XA, M48.44XA, M48.45XA, M48.46XA, M48.47XA, M48.48XA, M48.50XA, M48.8X1-M48.8X8, M49.80-M49.89, M50.00, M50.01, M50.03, M50.20, M50.21, M50.220-M50.223, M50.23, M50.30, M50.31, M50.320-M50.323, M50.33, M51.04-M51.06, M51.24-M51.27, M51.34, M51.35, M51.360-M51.369,

M51.370-M51.379, M80.08XA, M84.30XA, M84.38XA, M84.48XA, M84.68XA, M85.00, M85.40, M85.50, M85.60, M88.9, M90.60, M96.2-M96.5, M96.5, M96.842, M96.843, M99.83, M99.84, Q76.2, Q76.411-Q76.419, Q76.49, Q85.01, S12.000A, S12.000B, S12.001A, S12.001B, S12.100A, S12.100B, S12.101A, S12.101B, S12.200A, S12.200B, S12.201A, S12.201B, S12.300A, S12.300B, S12.301A, S12.301B, S12.400A, S12.400B, S12.401A, S12.401B, S12.500A, S12.500B, S12.501A, S12.501B, S12.600A, S12.600B, S12.601A, S12.601B, S12.9XXA, S12.9XXS, S22.009A-S22.009B, S22.009S, S22.9XXS, S32.009A, S32.009B, S32.9XXS

## 22220

Osteotomy of spine, including discectomy, anterior approach, single vertebral segment; cervical

## Clinical Responsibility

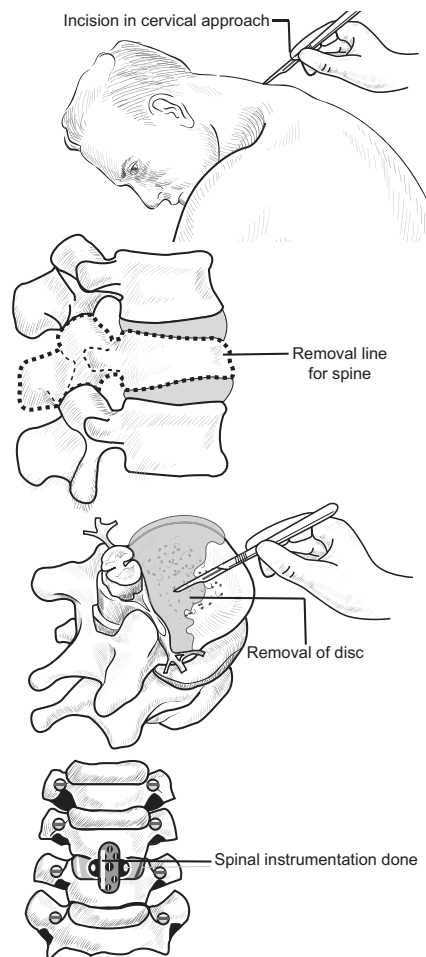
When the patient is appropriately prepped and anesthetized, the provider makes an incision in the skin overlying the affected vertebra and dissects down through the muscle and fascia to expose the lamina and intervertebral disk space. He reflects soft tissues subperiosteally from the adjacent vertebrae and uses bone cutting instruments to remove the adjacent disk material. He excises a wedge-shaped piece of bone from the vertebral body at its midportion. He then realigns the spine. The provider then irrigates the area, checks for bleeding, removes any instruments, and closes the incision.

## Coding Tips

Report this code when the provider performs an osteotomy on one vertebral segment. If he addresses additional segments, report add-on code +22226.

For osteophyte removal, report 22220. Osteophytes are bony growths, or calcific spurs, that grow on normal bone, often causing displacement of surrounding tissues and causing the symptoms like difficulty swallowing. To remove these spurs from the anterior spine, a provider would perform an osteotomy of the anterior spine.

## Illustration



22220

## Fee Schedule Information

**Medicare Fees (National):** Conversion Factor \$32.3465, Facility Fee: \$1,607.30, Non Facility Fee: \$1,607.30

**RVU (Facility):** Work RVU 22.94, Practice Exp. RVU 19.75, Malpractice RVU 7.00, Total RVU 49.69

**RVU (Non-Facility):** Work RVU 22.94, Practice Exp. RVU 19.75, Malpractice RVU 7.00, Total RVU 49.69

**MPFS Payment Policy Indicators:** Global Period 090, Preop 10.00%, Intraop 69.00%, Postop 21.00%, MPFS Status Indicator: A, PC/TC Indicator: 0, Endoscopic Base Code: None

**Practitioner MUE:** 1

## Modifier Allowances

22, 51, 52, 53, 54, 55, 56, 58, 59, 62, 63, 76, 77, 78, 79, 80, 81, 82, 99, AQ, AR, AS, CR, ET,

## 23066

Biopsy, soft tissue of shoulder area; deep

## Clinical Responsibility

When the patient is appropriately prepped and the area anesthetized, the provider makes an incision over the lump in the shoulder area. He extends the incision through the fascia and/or muscle. He uses microdissection to excise a sample of the tissue and submits the specimen for analysis. The provider irrigates the wound area and closes the incision with sutures.

## Coding Tips

If the provider performs a needle biopsy rather than an excisional biopsy, you should instead report 20206, Biopsy, muscle, percutaneous needle.

## Fee Schedule Information

**Medicare Fees (National):** Conversion Factor \$32.3465, Facility Fee: \$370.69, Non Facility Fee: \$562.83

**RVU (Facility):** Work RVU 4.30, Practice Exp. RVU 6.26, Malpractice RVU 0.90, Total RVU 11.46

**RVU (Non-Facility):** Work RVU 4.30, Practice Exp. RVU 12.20, Malpractice RVU 0.90, Total RVU 17.40

**MPFS Payment Policy Indicators:** Global Period 090, Preop 10.00%, Intraop 69.00%, Postop 21.00%, MPFS Status Indicator: A, PC/TC Indicator: 0, Endoscopic Base Code: None

**Practitioner MUE:** 2

## Modifier Allowances

22, 47, 50, 51, 52, 53, 54, 55, 56, 58, 59, 63, 73, 74, 76, 77, 78, 79, 99, AQ, AR, CR, ET, GA, GC, GJ, GR, KX, LT, PD, Q5, Q6, QJ, RT, XE, XP, XS, XU

## NCCI Alerts (version 31.0)

01610<sup>0</sup>, 0213T<sup>0</sup>, 0216T<sup>0</sup>, 0596T<sup>1</sup>, 0597T<sup>1</sup>, 0708T<sup>1</sup>, 0709T<sup>1</sup>, 10005<sup>1</sup>, 10007<sup>1</sup>, 10009<sup>1</sup>, 10011<sup>1</sup>, 10021<sup>1</sup>, 10030<sup>1</sup>, 10060<sup>1</sup>, 10140<sup>1</sup>, 10160<sup>1</sup>, 11010<sup>1</sup>, 11011<sup>1</sup>, 11012<sup>1</sup>, 12001<sup>1</sup>, 12002<sup>1</sup>, 12004<sup>1</sup>, 12005<sup>1</sup>, 12006<sup>1</sup>, 12007<sup>1</sup>, 12011<sup>1</sup>, 12013<sup>1</sup>, 12014<sup>1</sup>, 12015<sup>1</sup>, 12016<sup>1</sup>, 12017<sup>1</sup>, 12018<sup>1</sup>, 12020<sup>1</sup>, 12021<sup>1</sup>, 12031<sup>1</sup>, 12032<sup>1</sup>, 12034<sup>1</sup>, 12035<sup>1</sup>, 12036<sup>1</sup>, 12037<sup>1</sup>, 12041<sup>1</sup>, 12042<sup>1</sup>, 12044<sup>1</sup>, 12045<sup>1</sup>, 12046<sup>1</sup>, 12047<sup>1</sup>, 12051<sup>1</sup>, 12052<sup>1</sup>, 12053<sup>1</sup>, 12054<sup>1</sup>, 12055<sup>1</sup>, 12056<sup>1</sup>, 12057<sup>1</sup>, 13100<sup>1</sup>, 13101<sup>1</sup>, 13102<sup>1</sup>, 13120<sup>1</sup>, 13121<sup>1</sup>, 13122<sup>1</sup>, 13131<sup>1</sup>, 13132<sup>1</sup>, 13133<sup>1</sup>, 13151<sup>1</sup>, 13152<sup>1</sup>, 13153<sup>1</sup>,

Modifier: 0 = not allowed, 1 = allowed

20103<sup>1</sup>, 20200<sup>1</sup>, 23065<sup>1</sup>, 29805<sup>1</sup>, 36000<sup>1</sup>, 36400<sup>1</sup>, 36405<sup>1</sup>, 36406<sup>1</sup>, 36410<sup>1</sup>, 36420<sup>1</sup>, 36425<sup>1</sup>, 36430<sup>1</sup>, 36440<sup>1</sup>, 36591<sup>0</sup>, 36592<sup>0</sup>, 36600<sup>1</sup>, 36640<sup>1</sup>, 43752<sup>1</sup>, 51701<sup>1</sup>, 51702<sup>1</sup>, 51703<sup>1</sup>, 62320<sup>0</sup>, 62321<sup>0</sup>, 62322<sup>0</sup>, 62323<sup>0</sup>, 62324<sup>0</sup>, 62325<sup>0</sup>, 62326<sup>0</sup>, 62327<sup>0</sup>, 64400<sup>0</sup>, 64405<sup>0</sup>, 64408<sup>0</sup>, 64415<sup>0</sup>, 64416<sup>0</sup>, 64417<sup>0</sup>, 64418<sup>0</sup>, 64420<sup>0</sup>, 64421<sup>0</sup>, 64425<sup>0</sup>, 64430<sup>0</sup>, 64435<sup>0</sup>, 64445<sup>0</sup>, 64446<sup>0</sup>, 64447<sup>0</sup>, 64448<sup>0</sup>, 64449<sup>0</sup>, 64450<sup>1</sup>, 64451<sup>0</sup>, 64454<sup>1</sup>, 64461<sup>0</sup>, 64462<sup>0</sup>, 64463<sup>0</sup>, 64479<sup>0</sup>, 64480<sup>0</sup>, 64483<sup>0</sup>, 64484<sup>0</sup>, 64486<sup>0</sup>, 64487<sup>0</sup>, 64488<sup>0</sup>, 64489<sup>0</sup>, 64490<sup>0</sup>, 64491<sup>0</sup>, 64492<sup>0</sup>, 64493<sup>0</sup>, 64494<sup>0</sup>, 64495<sup>0</sup>, 64505<sup>0</sup>, 64510<sup>0</sup>, 64517<sup>0</sup>, 64520<sup>0</sup>, 64530<sup>0</sup>, 69990<sup>0</sup>, 92012<sup>1</sup>, 92014<sup>1</sup>, 93000<sup>1</sup>, 93005<sup>1</sup>, 93010<sup>1</sup>, 93040<sup>1</sup>, 93041<sup>1</sup>, 93042<sup>1</sup>, 93318<sup>1</sup>, 93355<sup>1</sup>, 94002<sup>1</sup>, 94200<sup>1</sup>, 94680<sup>1</sup>, 94681<sup>1</sup>, 94690<sup>1</sup>, 95812<sup>1</sup>, 95813<sup>1</sup>, 95816<sup>1</sup>, 95819<sup>1</sup>, 95822<sup>1</sup>, 95829<sup>1</sup>, 95955<sup>1</sup>, 96360<sup>1</sup>, 96361<sup>1</sup>, 96365<sup>1</sup>, 96366<sup>1</sup>, 96367<sup>1</sup>, 96368<sup>1</sup>, 96372<sup>1</sup>, 96374<sup>1</sup>, 96375<sup>1</sup>, 96376<sup>1</sup>, 96377<sup>1</sup>, 96523<sup>0</sup>, 99155<sup>0</sup>, 99156<sup>0</sup>, 99157<sup>0</sup>, 99211<sup>1</sup>, 99212<sup>1</sup>, 99213<sup>1</sup>, 99214<sup>1</sup>, 99215<sup>1</sup>, 99221<sup>1</sup>, 99222<sup>1</sup>, 99223<sup>1</sup>, 99231<sup>1</sup>, 99232<sup>1</sup>, 99233<sup>1</sup>, 99234<sup>1</sup>, 99235<sup>1</sup>, 99236<sup>1</sup>, 99238<sup>1</sup>, 99239<sup>1</sup>, 99242<sup>1</sup>, 99243<sup>1</sup>, 99244<sup>1</sup>, 99245<sup>1</sup>, 99252<sup>1</sup>, 99253<sup>1</sup>, 99254<sup>1</sup>, 99255<sup>1</sup>, 99291<sup>1</sup>, 99292<sup>1</sup>, 99304<sup>1</sup>, 99305<sup>1</sup>, 99306<sup>1</sup>, 99307<sup>1</sup>, 99308<sup>1</sup>, 99309<sup>1</sup>, 99310<sup>1</sup>, 99315<sup>1</sup>, 99316<sup>1</sup>, 99347<sup>1</sup>, 99348<sup>1</sup>, 99349<sup>1</sup>, 99350<sup>1</sup>, 99374<sup>1</sup>, 99375<sup>1</sup>, 99377<sup>1</sup>, 99378<sup>1</sup>, 99446<sup>0</sup>, 99447<sup>0</sup>, 99448<sup>0</sup>, 99449<sup>0</sup>, 99451<sup>0</sup>, 99452<sup>0</sup>, 99495<sup>0</sup>, 99496<sup>0</sup>, G0463<sup>1</sup>, G0471<sup>1</sup>, J0670<sup>1</sup>

## ICD-10-CM Cross References

C47.10-C47.12, C49.10-C49.12, D04.60-D04.62, D21.10-D21.12, D48.115, M60.211-M60.219, S49.80XD, S49.81XD, S49.82XD, S49.90XD, S49.91XD, S49.92XD

## 23071

Excision, tumor, soft tissue of shoulder area, subcutaneous; 3 cm or greater

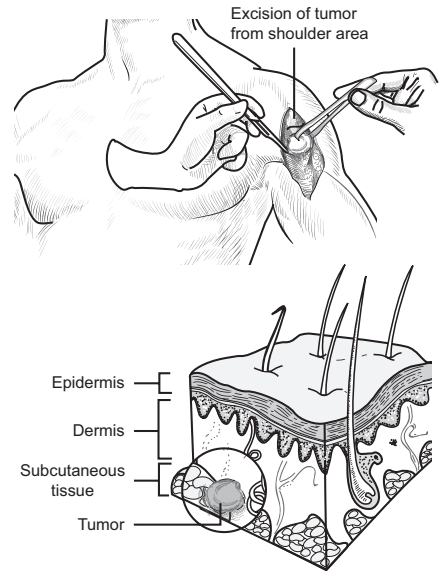
## Clinical Responsibility

When the patient is appropriately prepped and anesthetized, the provider makes an incision over the mass in the shoulder area. He uses microdissection to excise the mass and a margin of tissue surrounding it. He submits the specimen for analysis. The provider irrigates the wound area and closes the incision with sutures.

## Coding Tips

Report 23071 when the excised mass is 3 cm or greater in size.

## Illustration



23071

## Fee Schedule Information

**Medicare Fees (National):** Conversion Factor \$32.3465, Facility Fee: \$416.62, Non Facility Fee: \$416.62

**RVU (Facility):** Work RVU 5.91, Practice Exp. RVU 5.60, Malpractice RVU 1.37, Total RVU 12.88

**RVU (Non-Facility):** Work RVU 5.91, Practice Exp. RVU 5.60, Malpractice RVU 1.37, Total RVU 12.88

**MPFS Payment Policy Indicators:** Global Period 090, Preop 10.00%, Intraop 80.00%, Postop 10.00%, MPFS Status Indicator: A, PC/TC Indicator: 0, Endoscopic Base Code: None

**Practitioner MUE:** 2

## Modifier Allowances

22, 47, 50, 51, 52, 53, 54, 55, 56, 58, 59, 63, 73, 74, 76, 77, 78, 79, 80, 81, 82, 99, AQ, AR, AS, CR, ET, GA, GC, GJ, GR, KX, LT, Q5, Q6, RT, XE, XP, XS, XU

## NCCI Alerts (version 31.0)

01610<sup>0</sup>, 0213T<sup>0</sup>, 0216T<sup>0</sup>, 0596T<sup>1</sup>, 0597T<sup>1</sup>, 0708T<sup>1</sup>, 0709T<sup>1</sup>, 10005<sup>1</sup>, 10007<sup>1</sup>, 10009<sup>1</sup>, 10011<sup>1</sup>, 10021<sup>1</sup>, 10030<sup>1</sup>, 10060<sup>1</sup>, 10140<sup>1</sup>, 10160<sup>1</sup>, 11000<sup>1</sup>, 11001<sup>1</sup>, 11004<sup>1</sup>, 11005<sup>1</sup>, 11006<sup>1</sup>, 11010<sup>1</sup>, 11011<sup>1</sup>, 11012<sup>1</sup>, 11042<sup>1</sup>, 11043<sup>1</sup>, 11044<sup>1</sup>, 11045<sup>1</sup>, 11046<sup>1</sup>, 11047<sup>1</sup>, 12001<sup>1</sup>, 12002<sup>1</sup>, 12004<sup>1</sup>, 12005<sup>1</sup>, 12006<sup>1</sup>, 12007<sup>1</sup>, 12011<sup>1</sup>, 12013<sup>1</sup>, 12014<sup>1</sup>, 12015<sup>1</sup>, 12016<sup>1</sup>, 12017<sup>1</sup>, 12018<sup>1</sup>, 12020<sup>1</sup>, 12021<sup>1</sup>, 12031<sup>1</sup>, 12032<sup>1</sup>, 12034<sup>1</sup>, 12035<sup>1</sup>, 12036<sup>1</sup>,



12037<sup>1</sup>, 12041<sup>1</sup>, 12042<sup>1</sup>, 12044<sup>1</sup>, 12045<sup>1</sup>, 12046<sup>1</sup>, 12047<sup>1</sup>, 12051<sup>1</sup>, 12052<sup>1</sup>, 12053<sup>1</sup>, 12054<sup>1</sup>, 12055<sup>1</sup>, 12056<sup>1</sup>, 12057<sup>1</sup>, 13100<sup>1</sup>, 13101<sup>1</sup>, 13102<sup>1</sup>, 13120<sup>1</sup>, 13121<sup>1</sup>, 13122<sup>1</sup>, 13131<sup>1</sup>, 13132<sup>1</sup>, 13133<sup>1</sup>, 13151<sup>1</sup>, 13152<sup>1</sup>, 13153<sup>1</sup>, 23000<sup>1</sup>, 23030<sup>1</sup>, 23031<sup>1</sup>, 23065<sup>1</sup>, 23066<sup>1</sup>, 23075<sup>1</sup>, 24300<sup>1</sup>, 36000<sup>1</sup>, 36400<sup>1</sup>, 36405<sup>1</sup>, 36406<sup>1</sup>, 36410<sup>1</sup>, 36420<sup>1</sup>, 36425<sup>1</sup>, 36430<sup>1</sup>, 36440<sup>1</sup>, 36591<sup>0</sup>, 36592<sup>0</sup>, 36600<sup>1</sup>, 36640<sup>1</sup>, 38500<sup>1</sup>, 38505<sup>1</sup>, 38525<sup>1</sup>, 38531<sup>1</sup>, 38550<sup>1</sup>, 38555<sup>1</sup>, 38740<sup>1</sup>, 38745<sup>1</sup>, 43752<sup>1</sup>, 51701<sup>1</sup>, 51702<sup>1</sup>, 51703<sup>1</sup>, 62320<sup>0</sup>, 62321<sup>0</sup>, 62322<sup>0</sup>, 62323<sup>0</sup>, 62324<sup>0</sup>, 62325<sup>0</sup>, 62326<sup>0</sup>, 62327<sup>0</sup>, 64400<sup>0</sup>, 64405<sup>0</sup>, 64408<sup>0</sup>, 64415<sup>0</sup>, 64416<sup>0</sup>, 64417<sup>0</sup>, 64418<sup>0</sup>, 64420<sup>0</sup>, 64421<sup>0</sup>, 64425<sup>0</sup>, 64430<sup>0</sup>, 64435<sup>0</sup>, 64445<sup>0</sup>, 64446<sup>0</sup>, 64447<sup>0</sup>, 64448<sup>0</sup>, 64449<sup>0</sup>, 64450<sup>1</sup>, 64451<sup>0</sup>, 64454<sup>1</sup>, 64461<sup>0</sup>, 64462<sup>0</sup>, 64463<sup>0</sup>, 64479<sup>0</sup>, 64480<sup>0</sup>, 64483<sup>0</sup>, 64484<sup>0</sup>, 64486<sup>0</sup>, 64487<sup>0</sup>, 64488<sup>0</sup>, 64489<sup>0</sup>, 64490<sup>0</sup>, 64491<sup>0</sup>, 64492<sup>0</sup>, 64493<sup>0</sup>, 64494<sup>0</sup>, 64495<sup>0</sup>, 64505<sup>0</sup>, 64510<sup>0</sup>, 64517<sup>0</sup>, 64520<sup>0</sup>, 64530<sup>0</sup>, 69990<sup>0</sup>, 92012<sup>1</sup>, 92014<sup>1</sup>, 93000<sup>1</sup>, 93005<sup>1</sup>, 93010<sup>1</sup>, 93040<sup>1</sup>, 93041<sup>1</sup>, 93042<sup>1</sup>, 93318<sup>1</sup>, 93355<sup>1</sup>, 94002<sup>1</sup>, 94200<sup>1</sup>, 94680<sup>1</sup>, 94681<sup>1</sup>, 94690<sup>1</sup>, 95812<sup>1</sup>, 95813<sup>1</sup>, 95816<sup>1</sup>, 95819<sup>1</sup>, 95822<sup>1</sup>, 95829<sup>1</sup>, 95955<sup>1</sup>, 96360<sup>1</sup>, 96361<sup>1</sup>, 96365<sup>1</sup>, 96366<sup>1</sup>, 96367<sup>1</sup>, 96368<sup>1</sup>, 96372<sup>1</sup>, 96374<sup>1</sup>, 96375<sup>1</sup>, 96376<sup>1</sup>, 96377<sup>1</sup>, 96523<sup>0</sup>, 97597<sup>1</sup>, 97598<sup>1</sup>, 97602<sup>1</sup>, 99155<sup>0</sup>, 99156<sup>0</sup>, 99157<sup>0</sup>, 99211<sup>1</sup>, 99212<sup>1</sup>, 99213<sup>1</sup>, 99214<sup>1</sup>, 99215<sup>1</sup>, 99221<sup>1</sup>, 99222<sup>1</sup>, 99223<sup>1</sup>, 99231<sup>1</sup>, 99232<sup>1</sup>, 99233<sup>1</sup>, 99234<sup>1</sup>, 99235<sup>1</sup>, 99236<sup>1</sup>, 99238<sup>1</sup>, 99239<sup>1</sup>, 99242<sup>1</sup>, 99243<sup>1</sup>, 99244<sup>1</sup>, 99245<sup>1</sup>, 99252<sup>1</sup>, 99253<sup>1</sup>, 99254<sup>1</sup>, 99255<sup>1</sup>, 99291<sup>1</sup>, 99292<sup>1</sup>, 99304<sup>1</sup>, 99305<sup>1</sup>, 99306<sup>1</sup>, 99307<sup>1</sup>, 99308<sup>1</sup>, 99309<sup>1</sup>, 99310<sup>1</sup>, 99315<sup>1</sup>, 99316<sup>1</sup>, 99347<sup>1</sup>, 99348<sup>1</sup>, 99349<sup>1</sup>, 99350<sup>1</sup>, 99374<sup>1</sup>, 99375<sup>1</sup>, 99377<sup>1</sup>, 99378<sup>1</sup>, 99446<sup>0</sup>, 99447<sup>0</sup>, 99448<sup>0</sup>, 99449<sup>0</sup>, 99451<sup>0</sup>, 99452<sup>0</sup>, 99495<sup>0</sup>, 99496<sup>0</sup>, G0463<sup>1</sup>, G0471<sup>1</sup>

## ICD-10-CM Cross References

C43.60-C43.62, C47.10-C47.12, C49.10-C49.12, D03.60-D03.62, D21.10-D21.12, D22.60-D22.62, D23.60-D23.62, D48.115, M60.211-M60.219, T81.40XA-T81.40XS

## 23073

Excision, tumor, soft tissue of shoulder area, subfascial (eg, intramuscular); 5 cm or greater

## Clinical Responsibility

When the patient is appropriately prepped and anesthetized, the provider makes an incision over the mass in the

shoulder area. He extends the incision through the subcutaneous tissue and into muscle tissue. He uses microdissection to excise the mass and a margin of tissue surrounding it. He submits the specimen for analysis. The provider irrigates the wound area and closes the incision with sutures.

## Coding Tips

Report 23073 when the excised mass is 5 cm or greater in size.

When your provider excises a lesion, don't forget the musculoskeletal codes or you could seriously undercut your reimbursement for these procedures. If the provider's incision in the shoulder does not go deeper than the fascia, for example, a full thickness excision of 2.5 cm lesion, including margins, with simple closure, you are correct to choose a code from the section 11400 to 11471, Integumentary System. If the incision goes deeper than the fascia, however, the removal is not just superficial, and the musculoskeletal codes are more appropriate. With musculoskeletal codes, you should only look to the depth of the incision, not the size of the tumor.

## Fee Schedule Information

**Medicare Fees (National):** Conversion Factor \$32.3465, Facility Fee: \$688.01, Non Facility Fee: \$688.01

**RVU (Facility):** Work RVU 10.13, Practice Exp. RVU 8.90, Malpractice RVU 2.24, Total RVU 21.27

**RVU (Non-Facility):** Work RVU 10.13, Practice Exp. RVU 8.90, Malpractice RVU 2.24, Total RVU 21.27

**MPFS Payment Policy Indicators:** Global Period 090, Preop 10.00%, Intraop 69.00%, Postop 21.00%, MPFS Status Indicator: A, PC/TC Indicator: 0, Endoscopic Base Code: None

**Practitioner MUE:** 2

## Modifier Allowances

22, 47, 50, 51, 52, 53, 54, 55, 56, 58, 59, 63, 73, 74, 76, 77, 78, 79, 80, 81, 82, 99, AQ, AR, AS, CR, ET, GA, GC, GJ, GR, KX, LT, Q5, Q6, RT, XE, XP, XS, XU

## NCCI Alerts (version 31.0)

01610<sup>0</sup>, 0213T<sup>0</sup>, 0216T<sup>0</sup>, 0596T<sup>1</sup>, 0597T<sup>1</sup>, 0708T<sup>1</sup>, 0709T<sup>1</sup>, 10005<sup>1</sup>, 10007<sup>1</sup>, 10009<sup>1</sup>, 10011<sup>1</sup>, 10021<sup>1</sup>, 10030<sup>1</sup>, 10060<sup>1</sup>, 10140<sup>1</sup>, 10160<sup>1</sup>, 11000<sup>1</sup>, 11001<sup>1</sup>, 11004<sup>1</sup>, 11005<sup>1</sup>,

11006<sup>1</sup>, 11010<sup>1</sup>, 11011<sup>1</sup>, 11012<sup>1</sup>, 11042<sup>1</sup>, 11043<sup>1</sup>, 11044<sup>1</sup>, 11045<sup>1</sup>, 11046<sup>1</sup>, 11047<sup>1</sup>, 12001<sup>1</sup>, 12002<sup>1</sup>, 12004<sup>1</sup>, 12005<sup>1</sup>, 12006<sup>1</sup>, 12007<sup>1</sup>, 12011<sup>1</sup>, 12013<sup>1</sup>, 12014<sup>1</sup>, 12015<sup>1</sup>, 12016<sup>1</sup>, 12017<sup>1</sup>, 12018<sup>1</sup>, 12020<sup>1</sup>, 12021<sup>1</sup>, 12031<sup>1</sup>, 12032<sup>1</sup>, 12034<sup>1</sup>, 12035<sup>1</sup>, 12036<sup>1</sup>, 12037<sup>1</sup>, 12041<sup>1</sup>, 12042<sup>1</sup>, 12044<sup>1</sup>, 12045<sup>1</sup>, 12046<sup>1</sup>, 12047<sup>1</sup>, 12051<sup>1</sup>, 12052<sup>1</sup>, 12053<sup>1</sup>, 12054<sup>1</sup>, 12055<sup>1</sup>, 12056<sup>1</sup>, 12057<sup>1</sup>, 13100<sup>1</sup>, 13101<sup>1</sup>, 13102<sup>1</sup>, 13120<sup>1</sup>, 13121<sup>1</sup>, 13122<sup>1</sup>, 13131<sup>1</sup>, 13132<sup>1</sup>, 13133<sup>1</sup>, 13151<sup>1</sup>, 13152<sup>1</sup>, 13153<sup>1</sup>, 23000<sup>1</sup>, 23030<sup>1</sup>, 23031<sup>1</sup>, 23065<sup>1</sup>, 23066<sup>1</sup>, 23071<sup>1</sup>, 23075<sup>1</sup>, 23076<sup>1</sup>, 24300<sup>1</sup>, 36000<sup>1</sup>, 36400<sup>1</sup>, 36405<sup>1</sup>, 36406<sup>1</sup>, 36410<sup>1</sup>, 36420<sup>1</sup>, 36425<sup>1</sup>, 36430<sup>1</sup>, 36440<sup>1</sup>, 36591<sup>0</sup>, 36592<sup>0</sup>, 36600<sup>1</sup>, 36640<sup>1</sup>, 38505<sup>1</sup>, 38525<sup>1</sup>, 38550<sup>1</sup>, 38555<sup>1</sup>, 38740<sup>1</sup>, 38745<sup>1</sup>, 43752<sup>1</sup>, 51701<sup>1</sup>, 51702<sup>1</sup>, 51703<sup>1</sup>, 62320<sup>0</sup>, 62321<sup>0</sup>, 62322<sup>0</sup>, 62323<sup>0</sup>, 62324<sup>0</sup>, 62325<sup>0</sup>, 62326<sup>0</sup>, 62327<sup>0</sup>, 64400<sup>0</sup>, 64405<sup>0</sup>, 64408<sup>0</sup>, 64415<sup>0</sup>, 64416<sup>0</sup>, 64417<sup>0</sup>, 64418<sup>0</sup>, 64420<sup>0</sup>, 64421<sup>0</sup>, 64425<sup>0</sup>, 64430<sup>0</sup>, 64435<sup>0</sup>, 64445<sup>0</sup>, 64446<sup>0</sup>, 64447<sup>0</sup>, 64448<sup>0</sup>, 64449<sup>0</sup>, 64450<sup>1</sup>, 64451<sup>0</sup>, 64454<sup>1</sup>, 64461<sup>0</sup>, 64462<sup>0</sup>, 64463<sup>0</sup>, 64479<sup>0</sup>, 64480<sup>0</sup>, 64483<sup>0</sup>, 64484<sup>0</sup>, 64486<sup>0</sup>, 64487<sup>0</sup>, 64488<sup>0</sup>, 64489<sup>0</sup>, 64490<sup>0</sup>, 64491<sup>0</sup>, 64492<sup>0</sup>, 64493<sup>0</sup>, 64494<sup>0</sup>, 64495<sup>0</sup>, 64505<sup>0</sup>, 64510<sup>0</sup>, 64517<sup>0</sup>, 64520<sup>0</sup>, 64530<sup>0</sup>, 64718<sup>1</sup>, 69990<sup>0</sup>, 92012<sup>1</sup>, 92014<sup>1</sup>, 93000<sup>1</sup>, 93005<sup>1</sup>, 93010<sup>1</sup>, 93040<sup>1</sup>, 93041<sup>1</sup>, 93042<sup>1</sup>, 93318<sup>1</sup>, 93355<sup>1</sup>, 94002<sup>1</sup>, 94200<sup>1</sup>, 94680<sup>1</sup>, 94681<sup>1</sup>, 94690<sup>1</sup>, 95812<sup>1</sup>, 95813<sup>1</sup>, 95816<sup>1</sup>, 95819<sup>1</sup>, 95822<sup>1</sup>, 95829<sup>1</sup>, 95955<sup>1</sup>, 96360<sup>1</sup>, 96361<sup>1</sup>, 96365<sup>1</sup>, 96366<sup>1</sup>, 96367<sup>1</sup>, 96368<sup>1</sup>, 96372<sup>1</sup>, 96374<sup>1</sup>, 96375<sup>1</sup>, 96376<sup>1</sup>, 96377<sup>1</sup>, 96523<sup>0</sup>, 97597<sup>1</sup>, 97598<sup>1</sup>, 97602<sup>1</sup>, 99155<sup>0</sup>, 99156<sup>0</sup>, 99157<sup>0</sup>, 99211<sup>1</sup>, 99212<sup>1</sup>, 99213<sup>1</sup>, 99214<sup>1</sup>, 99215<sup>1</sup>, 99221<sup>1</sup>, 99222<sup>1</sup>, 99223<sup>1</sup>, 99231<sup>1</sup>, 99232<sup>1</sup>, 99233<sup>1</sup>, 99234<sup>1</sup>, 99235<sup>1</sup>, 99236<sup>1</sup>, 99238<sup>1</sup>, 99239<sup>1</sup>, 99242<sup>1</sup>, 99243<sup>1</sup>, 99244<sup>1</sup>, 99245<sup>1</sup>, 99252<sup>1</sup>, 99253<sup>1</sup>, 99254<sup>1</sup>, 99255<sup>1</sup>, 99291<sup>1</sup>, 99292<sup>1</sup>, 99304<sup>1</sup>, 99305<sup>1</sup>, 99306<sup>1</sup>, 99307<sup>1</sup>, 99308<sup>1</sup>, 99309<sup>1</sup>, 99310<sup>1</sup>, 99315<sup>1</sup>, 99316<sup>1</sup>, 99347<sup>1</sup>, 99348<sup>1</sup>, 99349<sup>1</sup>, 99350<sup>1</sup>, 99374<sup>1</sup>, 99375<sup>1</sup>, 99377<sup>1</sup>, 99378<sup>1</sup>, 99446<sup>0</sup>, 99447<sup>0</sup>, 99448<sup>0</sup>, 99449<sup>0</sup>, 99451<sup>0</sup>, 99452<sup>0</sup>, 99495<sup>0</sup>, 99496<sup>0</sup>, G0463<sup>1</sup>, G0471<sup>1</sup>

## ICD-10-CM Cross References

D03.60-D03.62, D21.10-D21.12, D22.60-D22.62, D23.60-D23.62, D48.115, T81.40XA-T81.40XS

# Musculoskeletal System

## 27599

Unlisted procedure, femur or knee

### Clinical Responsibility

The provider performs a procedure on the femur or knee that is not represented by any of the standard and active CPT® codes available.

### Coding Tips

CPT® guidelines instruct that you should not choose a code that merely approximates the service provided.

You should report the service using only the appropriate unlisted procedure code if no such specific procedure or service code exists.

You must report a Category III code when available in place of an unlisted procedure code.

When reporting a procedure with an unlisted code, submit a cover letter explaining the reason for choosing the unlisted code instead of a defined, active code. Include one or more similar codes and compare your service to those codes to justify the claim amount you are billing. Also include the operative notes or other relevant documentation to strengthen the claim and to avoid a possible denial. Your payers will consider claims with unlisted procedure codes on a case by case basis, and they will determine payment based on the documentation you provide.

### Fee Schedule Information

**Medicare Fees (National):** Conversion Factor \$32.3465, Facility Fee: \$0.00, Non Facility Fee: \$0.00

**RVU (Facility):** Work RVU 0.00, Practice Exp. RVU 0.00, Malpractice RVU 0.00, Total RVU 0.00

**RVU (Non-Facility):** Work RVU 0.00, Practice Exp. RVU 0.00, Malpractice RVU 0.00, Total RVU 0.00

**MPFS Payment Policy Indicators:** Global Period YYY, Preop 0.00%, Intraop 0.00%, Postop 0.00%, MPFS Status Indicator: C, PC/TC Indicator: 0, Endoscopic Base Code: None

**Practitioner MUE:** 1

### Modifier Allowances

50, 51, 53, 62, 66, 76, 77, 78, 79, 80, 81, 82, AR, AS, GC, GY, GZ, KX, LT, RT

### NCCI Alerts (version 31.0)

96523<sup>0</sup>

### ICD-10-CM Cross References

M05.461-M05.469, M05.561-M05.569, M05.761-M05.769, M05.861-M05.869, M06.061-M06.069, M06.261-M06.269, M06.361-M06.369, M06.861-M06.869, M17.9, M22.2X1-M22.2X9, M22.3X1-M22.3X9, M22.40-M22.42, M22.8X1-M22.8X9, M23.601-M23.609, M23.611-M23.619, M23.621-M23.629, M23.631-M23.639, M23.641-M23.649, M23.671-M23.679, M23.8X1-M23.8X9, M79.4, M84.551A, M84.552A, M84.553A, M84.60XD, M84.651A, M84.652A, M84.653A, M84.750A-M84.750G, M84.750K, M84.750P, M84.751A-M84.751G, M84.751K, M84.751P, M84.752A-M84.752G, M84.752K, M84.752P, M84.753A-M84.753G, M84.753K, M84.753P, M84.754A-M84.754G, M84.754K, M84.754P, M84.755A-M84.755G, M84.755K, M84.755P, M84.756A-M84.756G, M84.756K, M84.756P, M84.757A-M84.757G, M84.757K, M84.757P, M84.758A-M84.758G, M84.758K, M84.758P, M84.759A-M84.759G, M84.759K, M84.759P, M87.051, M87.052, M87.059, M87.151, M87.152, M87.159, M87.251, M87.252, M87.256, M87.351-M87.353, M87.851, M87.852, M87.859, M96.661-M96.669, M97.11XA, M97.12XA, P13.2, Q68.2, Q74.1, S80.00XA, S80.01XA, S80.02XA, S80.251A, S80.252A, S80.259A, S80.261A, S80.262A, S80.269A, S80.271A-S80.271S, S80.272A-S80.272S, S80.279A-S80.279S, S80.911D, S80.911S, S80.912D, S80.912S, S80.919D, S81.011D, S81.012D, S81.019D, S81.021D, S81.022D, S81.029D, S81.051D, S81.051S, S81.052D, S81.052S, S81.059D, S81.059S, S83.001D, S83.001S, S83.002D, S83.002S, S83.003D, S83.003S, S83.011D, S83.011S, S83.012D, S83.012S, S83.013D, S83.013S, S83.091D, S83.091S, S83.092D, S83.092S, S83.093D, S83.093S, S83.101D, S83.101S, S83.102D, S83.102S, S83.103D, S83.103S, S83.200D, S83.200S, S83.201D, S83.201S, S83.202D, S83.202S, S83.203D, S83.203S, S83.204D, S83.204S, S83.205D, S83.205S, S83.206D, S83.206S, S83.207D, S83.207S, S83.209D, S83.211D, S83.211S, S83.212D, S83.212S, S83.219D, S83.219S, S83.221D, S83.221S, S83.222D, S83.222S, S83.229D, S83.229S, S83.231D, S83.231S, S83.232D, S83.232S, S83.239D, S83.239S, S83.241D, S83.241S, S83.242D, S83.242S, S83.249D, S83.249S, S83.251D, S83.251S, S83.252D, S83.252S, S83.259D, S83.259S, S83.261D, S83.261S, S83.262D, S83.262S, S83.269D, S83.269S, S83.271D, S83.271S, S83.272D, S83.272S, S83.279D, S83.279S, S83.281D, S83.281S, S83.282D, S83.282S, S83.289D, S83.289S, S83.30XD, S83.30XS, S83.31XD, S83.31XS,

S83.32XD, S83.32XS, S87.00XD, S87.01XD, S87.01XS, S87.02XD, S87.02XS, T24.421D, T24.421S, T24.422D, T24.422S, T24.429D, T24.429S, T24.521D, T24.521S, T24.522D, T24.522S, T24.529D, T24.529S, T24.611S, T24.621S, T24.622S, T24.629S, T24.721D, T24.721S, T24.722D, T24.722S, T24.729D, T24.729S

## 27600

Decompression fasciotomy, leg; anterior and/or lateral compartments only

### Clinical Responsibility

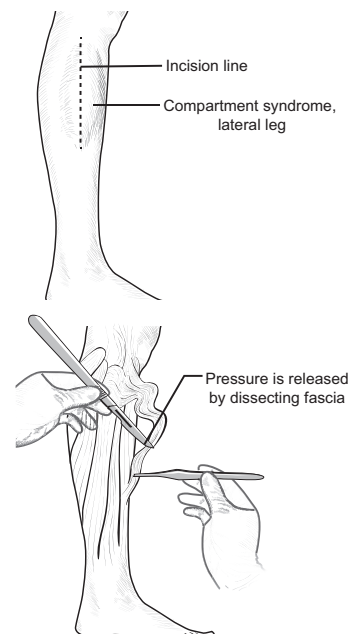
When the patient is appropriately prepped and anesthetized, the provider makes an incision in the skin over the affected area in the anterior or lateral compartment of the leg. He then excises the fascia.

### Coding Tips

If the provider excises fascia from the posterior compartment of the leg, use 27601, Decompression fasciotomy, leg; posterior compartment only.

If the provider excises fascia from the anterior, posterior, and lateral compartments of the legs, use 27602, Decompression fasciotomy, leg; anterior and/or lateral, and posterior compartment.

### Illustration



27600

## Fee Schedule Information

**Medicare Fees (National):** Conversion Factor \$32.3465, Facility Fee: \$394.30, Non Facility Fee: \$394.30

**RVU (Facility):** Work RVU 6.03, Practice Exp. RVU 4.92, Malpractice RVU 1.24, Total RVU 12.19

**RVU (Non-Facility):** Work RVU 6.03, Practice Exp. RVU 4.92, Malpractice RVU 1.24, Total RVU 12.19

**MPFS Payment Policy Indicators:** Global Period 090, Preop 10.00%, Intraop 69.00%, Postop 21.00%, MPFS Status Indicator: A, PC/TC Indicator: 0, Endoscopic Base Code: None

**Practitioner MUE: 1**

## Modifier Allowances

22, 47, 50, 51, 52, 53, 54, 55, 56, 58, 59, 62, 63, 73, 74, 76, 77, 78, 79, 99, AQ, AR, CR, ET, GA, GC, GJ, GR, KX, LT, PD, Q5, Q6, QJ, RT, XE, XP, XS, XU

## NCCI Alerts (version 31.0)

01470<sup>0</sup>, 0213T<sup>0</sup>, 0216T<sup>0</sup>, 0596T<sup>1</sup>, 0597T<sup>1</sup>, 0708T<sup>1</sup>, 0709T<sup>1</sup>, 10030<sup>1</sup>, 10120<sup>1</sup>, 10140<sup>1</sup>, 11000<sup>1</sup>, 11001<sup>1</sup>, 11004<sup>1</sup>, 11005<sup>1</sup>, 11006<sup>1</sup>, 11012<sup>1</sup>, 11042<sup>1</sup>, 11043<sup>1</sup>, 11044<sup>1</sup>, 11045<sup>1</sup>, 11046<sup>1</sup>, 11047<sup>1</sup>, 12001<sup>1</sup>, 12002<sup>1</sup>, 12004<sup>1</sup>, 12005<sup>1</sup>, 12006<sup>1</sup>, 12007<sup>1</sup>, 12011<sup>1</sup>, 12013<sup>1</sup>, 12014<sup>1</sup>, 12015<sup>1</sup>, 12016<sup>1</sup>, 12017<sup>1</sup>, 12018<sup>1</sup>, 12020<sup>1</sup>, 12021<sup>1</sup>, 12031<sup>1</sup>, 12032<sup>1</sup>, 12034<sup>1</sup>, 12035<sup>1</sup>, 12036<sup>1</sup>, 12037<sup>1</sup>, 12041<sup>1</sup>, 12042<sup>1</sup>, 12044<sup>1</sup>, 12045<sup>1</sup>, 12046<sup>1</sup>, 12047<sup>1</sup>, 12051<sup>1</sup>, 12052<sup>1</sup>, 12053<sup>1</sup>, 12054<sup>1</sup>, 12055<sup>1</sup>, 12056<sup>1</sup>, 12057<sup>1</sup>, 13100<sup>1</sup>, 13101<sup>1</sup>, 13102<sup>1</sup>, 13120<sup>1</sup>, 13121<sup>1</sup>, 13122<sup>1</sup>, 13131<sup>1</sup>, 13132<sup>1</sup>, 13133<sup>1</sup>, 13151<sup>1</sup>, 13152<sup>1</sup>, 13153<sup>1</sup>, 20103<sup>1</sup>, 27603<sup>1</sup>, 27630<sup>1</sup>, 27680<sup>1</sup>, 36000<sup>1</sup>, 36400<sup>1</sup>, 36405<sup>1</sup>, 36406<sup>1</sup>, 36410<sup>1</sup>, 36420<sup>1</sup>, 36425<sup>1</sup>, 36430<sup>1</sup>, 36440<sup>1</sup>, 36591<sup>0</sup>, 36592<sup>0</sup>, 36600<sup>1</sup>, 36640<sup>1</sup>, 43752<sup>1</sup>, 51701<sup>1</sup>, 51702<sup>1</sup>, 51703<sup>1</sup>, 62320<sup>0</sup>, 62321<sup>0</sup>, 62322<sup>0</sup>, 62323<sup>0</sup>, 62324<sup>0</sup>, 62325<sup>0</sup>, 62326<sup>0</sup>, 62327<sup>0</sup>, 64400<sup>0</sup>, 64405<sup>0</sup>, 64408<sup>0</sup>, 64415<sup>0</sup>, 64416<sup>0</sup>, 64417<sup>0</sup>, 64418<sup>0</sup>, 64420<sup>0</sup>, 64421<sup>0</sup>, 64425<sup>0</sup>, 64430<sup>0</sup>, 64435<sup>0</sup>, 64445<sup>0</sup>, 64446<sup>0</sup>, 64447<sup>0</sup>, 64448<sup>0</sup>, 64449<sup>0</sup>, 64450<sup>1</sup>, 64451<sup>0</sup>, 64454<sup>1</sup>, 64461<sup>0</sup>, 64462<sup>0</sup>, 64463<sup>0</sup>, 64479<sup>0</sup>, 64480<sup>0</sup>, 64483<sup>0</sup>, 64484<sup>0</sup>, 64486<sup>0</sup>, 64487<sup>0</sup>, 64488<sup>0</sup>, 64489<sup>0</sup>, 64490<sup>0</sup>, 64491<sup>0</sup>, 64492<sup>0</sup>, 64493<sup>0</sup>, 64494<sup>0</sup>, 64495<sup>0</sup>, 64505<sup>0</sup>, 64510<sup>0</sup>, 64517<sup>0</sup>, 64520<sup>0</sup>, 64530<sup>0</sup>, 69990<sup>0</sup>, 92012<sup>1</sup>, 92014<sup>1</sup>, 93000<sup>1</sup>, 93005<sup>1</sup>, 93010<sup>1</sup>, 93040<sup>1</sup>, 93041<sup>1</sup>, 93042<sup>1</sup>, 93318<sup>1</sup>, 93355<sup>1</sup>, 94002<sup>1</sup>, 94200<sup>1</sup>, 94680<sup>1</sup>, 94681<sup>1</sup>, 94690<sup>1</sup>, 95812<sup>1</sup>, 95813<sup>1</sup>, 95816<sup>1</sup>, 95819<sup>1</sup>, 95822<sup>1</sup>, 95829<sup>1</sup>, 95955<sup>1</sup>, 96360<sup>1</sup>, 96361<sup>1</sup>, 96365<sup>1</sup>, 96366<sup>1</sup>, 96367<sup>1</sup>, 96368<sup>1</sup>, 96372<sup>1</sup>, 96374<sup>1</sup>, 96375<sup>1</sup>, 96376<sup>1</sup>, 96377<sup>1</sup>, 96523<sup>0</sup>, 97597<sup>1</sup>,

97598<sup>1</sup>, 97602<sup>1</sup>, 99155<sup>0</sup>, 99156<sup>0</sup>, 99157<sup>0</sup>, 99211<sup>1</sup>, 99212<sup>1</sup>, 99213<sup>1</sup>, 99214<sup>1</sup>, 99215<sup>1</sup>, 99221<sup>1</sup>, 99222<sup>1</sup>, 99223<sup>1</sup>, 99231<sup>1</sup>, 99232<sup>1</sup>, 99233<sup>1</sup>, 99234<sup>1</sup>, 99235<sup>1</sup>, 99236<sup>1</sup>, 99238<sup>1</sup>, 99239<sup>1</sup>, 99242<sup>1</sup>, 99243<sup>1</sup>, 99244<sup>1</sup>, 99245<sup>1</sup>, 99252<sup>1</sup>, 99253<sup>1</sup>, 99254<sup>1</sup>, 99255<sup>1</sup>, 99291<sup>1</sup>, 99292<sup>1</sup>, 99304<sup>1</sup>, 99305<sup>1</sup>, 99306<sup>1</sup>, 99307<sup>1</sup>, 99308<sup>1</sup>, 99309<sup>1</sup>, 99310<sup>1</sup>, 99315<sup>1</sup>, 99316<sup>1</sup>, 99347<sup>1</sup>, 99348<sup>1</sup>, 99349<sup>1</sup>, 99350<sup>1</sup>, 99374<sup>1</sup>, 99375<sup>1</sup>, 99377<sup>1</sup>, 99378<sup>1</sup>, 99446<sup>0</sup>, 99447<sup>0</sup>, 99448<sup>0</sup>, 99449<sup>0</sup>, 99451<sup>0</sup>, 99452<sup>0</sup>, 99495<sup>0</sup>, 99496<sup>0</sup>, G0463<sup>1</sup>, G0471<sup>1</sup>

## ICD-10-CM Cross References

M33.03, M33.13, M33.93, M60.003-M60.005, M60.009, M60.061-M60.069, M60.09, M60.10, M60.161-M60.169, M60.19, M62.82, M79.A21-M79.A29, M96.842, M96.843, S87.00XA, S87.80XA, T24.009S, T24.031A, T24.032A, T24.039A, T24.091A, T24.092A, T24.099A, T24.201A, T24.202A, T24.209A, T24.231A, T24.232A, T24.239A, T24.291A, T24.292A, T24.299A, T24.301A, T24.302A, T24.309A, T24.331A, T24.332A, T24.339A, T24.391A, T24.392A, T24.399A, T24.401A, T24.402A, T24.409A, T24.409S, T24.431A, T24.432A, T24.439A, T24.491A, T24.492A, T24.499A, T24.601A, T24.602A, T24.609A, T24.631A, T24.632A, T24.639A, T24.691A, T24.692A, T24.699A, T24.701A, T24.702A, T24.709A, T24.731A, T24.732A, T24.739A, T24.791A, T24.792A, T24.799A, T25.399A, T25.799A, T79.8XXA, T79.A29A

## 27601

Decompression fasciotomy, leg; posterior compartment(s) only

## Clinical Responsibility

When the patient is appropriately prepped and anesthetized, the provider makes an incision in the skin over the affected area in the posterior compartment of the leg. He then excises the fascia.

## Coding Tips

If the provider excises fascia from the anterior and lateral compartment of the leg, use 27600, Decompression fasciotomy, leg; anterior and/or lateral compartments only.

If the provider excises fascia from the anterior, posterior, and lateral compartments of the legs, use 27602, Decompression fasciotomy, leg; anterior and/or lateral, and posterior compartment.

## Fee Schedule Information

**Medicare Fees (National):** Conversion Factor \$32.3465, Facility Fee: \$432.80, Non Facility Fee: \$432.80

**RVU (Facility):** Work RVU 6.05, Practice Exp. RVU 6.18, Malpractice RVU 1.15, Total RVU 13.38

**RVU (Non-Facility):** Work RVU 6.05, Practice Exp. RVU 6.18, Malpractice RVU 1.15, Total RVU 13.38

**MPFS Payment Policy Indicators:** Global Period 090, Preop 10.00%, Intraop 69.00%, Postop 21.00%, MPFS Status Indicator: A, PC/TC Indicator: 0, Endoscopic Base Code: None

**Practitioner MUE: 1**

## Modifier Allowances

22, 47, 50, 51, 52, 53, 54, 55, 56, 58, 59, 63, 73, 74, 76, 77, 78, 79, 99, AQ, AR, CR, ET, GA, GC, GJ, GR, KX, LT, PD, Q5, Q6, QJ, RT, XE, XP, XS, XU

## NCCI Alerts (version 31.0)

01470<sup>0</sup>, 0213T<sup>0</sup>, 0216T<sup>0</sup>, 0596T<sup>1</sup>, 0597T<sup>1</sup>, 0708T<sup>1</sup>, 0709T<sup>1</sup>, 10120<sup>1</sup>, 11000<sup>1</sup>, 11001<sup>1</sup>, 11004<sup>1</sup>, 11005<sup>1</sup>, 11006<sup>1</sup>, 11012<sup>1</sup>, 11042<sup>1</sup>, 11043<sup>1</sup>, 11044<sup>1</sup>, 11045<sup>1</sup>, 11046<sup>1</sup>, 11047<sup>1</sup>, 12001<sup>1</sup>, 12002<sup>1</sup>, 12004<sup>1</sup>, 12005<sup>1</sup>, 12006<sup>1</sup>, 12007<sup>1</sup>, 12011<sup>1</sup>, 12013<sup>1</sup>, 12014<sup>1</sup>, 12015<sup>1</sup>, 12016<sup>1</sup>, 12017<sup>1</sup>, 12018<sup>1</sup>, 12020<sup>1</sup>, 12021<sup>1</sup>, 12031<sup>1</sup>, 12032<sup>1</sup>, 12034<sup>1</sup>, 12035<sup>1</sup>, 12036<sup>1</sup>, 12037<sup>1</sup>, 12041<sup>1</sup>, 12042<sup>1</sup>, 12044<sup>1</sup>, 12045<sup>1</sup>, 12046<sup>1</sup>, 12047<sup>1</sup>, 12051<sup>1</sup>, 12052<sup>1</sup>, 12053<sup>1</sup>, 12054<sup>1</sup>, 12055<sup>1</sup>, 12056<sup>1</sup>, 12057<sup>1</sup>, 13100<sup>1</sup>, 13101<sup>1</sup>, 13102<sup>1</sup>, 13120<sup>1</sup>, 13121<sup>1</sup>, 13122<sup>1</sup>, 13131<sup>1</sup>, 13132<sup>1</sup>, 13133<sup>1</sup>, 13151<sup>1</sup>, 13152<sup>1</sup>, 13153<sup>1</sup>, 20103<sup>1</sup>, 27630<sup>1</sup>, 27680<sup>1</sup>, 36000<sup>1</sup>, 36400<sup>1</sup>, 36405<sup>1</sup>, 36406<sup>1</sup>, 36410<sup>1</sup>, 36420<sup>1</sup>, 36425<sup>1</sup>, 36430<sup>1</sup>, 36440<sup>1</sup>, 36591<sup>0</sup>, 36592<sup>0</sup>, 36600<sup>1</sup>, 36640<sup>1</sup>, 43752<sup>1</sup>, 51701<sup>1</sup>, 51702<sup>1</sup>, 51703<sup>1</sup>, 62320<sup>0</sup>, 62321<sup>0</sup>, 62322<sup>0</sup>, 62323<sup>0</sup>, 62324<sup>0</sup>, 62325<sup>0</sup>, 62326<sup>0</sup>, 62327<sup>0</sup>, 64400<sup>0</sup>, 64405<sup>0</sup>, 64408<sup>0</sup>, 64415<sup>0</sup>, 64416<sup>0</sup>, 64417<sup>0</sup>, 64418<sup>0</sup>, 64420<sup>0</sup>, 64421<sup>0</sup>, 64425<sup>0</sup>, 64430<sup>0</sup>, 64435<sup>0</sup>, 64445<sup>0</sup>, 64446<sup>0</sup>, 64447<sup>0</sup>, 64448<sup>0</sup>, 64449<sup>0</sup>, 64450<sup>1</sup>, 64451<sup>0</sup>, 64454<sup>1</sup>, 64461<sup>0</sup>, 64462<sup>0</sup>, 64463<sup>0</sup>, 64479<sup>0</sup>, 64480<sup>0</sup>, 64483<sup>0</sup>, 64484<sup>0</sup>, 64486<sup>0</sup>, 64487<sup>0</sup>, 64488<sup>0</sup>, 64489<sup>0</sup>, 64490<sup>0</sup>, 64491<sup>0</sup>, 64492<sup>0</sup>, 64493<sup>0</sup>, 64494<sup>0</sup>, 64495<sup>0</sup>, 64505<sup>0</sup>, 64510<sup>0</sup>, 64517<sup>0</sup>, 64520<sup>0</sup>, 64530<sup>0</sup>, 69990<sup>0</sup>, 92012<sup>1</sup>, 92014<sup>1</sup>, 93000<sup>1</sup>, 93005<sup>1</sup>, 93010<sup>1</sup>, 93040<sup>1</sup>, 93041<sup>1</sup>, 93042<sup>1</sup>, 93318<sup>1</sup>, 93355<sup>1</sup>, 94002<sup>1</sup>, 94200<sup>1</sup>, 94680<sup>1</sup>, 94681<sup>1</sup>, 94690<sup>1</sup>, 95812<sup>1</sup>, 95813<sup>1</sup>, 95816<sup>1</sup>, 95819<sup>1</sup>, 95822<sup>1</sup>, 95829<sup>1</sup>, 95955<sup>1</sup>, 96360<sup>1</sup>, 96361<sup>1</sup>, 96365<sup>1</sup>, 96366<sup>1</sup>, 96367<sup>1</sup>, 96368<sup>1</sup>, 96372<sup>1</sup>, 96374<sup>1</sup>, 96375<sup>1</sup>, 96376<sup>1</sup>, 96377<sup>1</sup>, 96523<sup>0</sup>, 97597<sup>1</sup>, 97598<sup>1</sup>, 97602<sup>1</sup>, 99155<sup>0</sup>,



# Medicine

## 98940

Chiropractic manipulative treatment (CMT); spinal, 1-2 regions

### Clinical Responsibility

The provider, typically a qualified chiropractic professional, takes a detailed medical history from the patient. He may also take X-rays of the target anatomical site. Based on his initial investigation, the provider decides on a course of treatment. Typically, treatment requires that the patient come in for several sittings with the provider for completion of the treatment course. During the treatment, he instructs the patient to lie down on a special treatment table adjusted to his height. The provider may perform therapy ranging from light touching to vigorous manipulation and massaging.

This code represents when the provider performs treatment on one to two spinal regions.

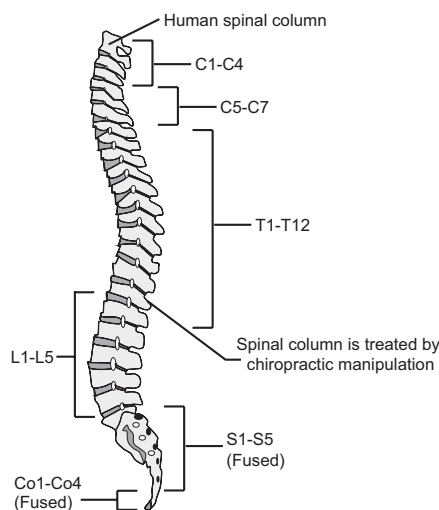
### Coding Tips

For the same service involving three to four regions, use 98941, Chiropractic manipulative treatment CMT; spinal, three to four regions.

For the same service involving five regions, use 98942, Chiropractic manipulative treatment CMT; spinal, five regions.

You may be able to report a significant, separately identifiable evaluation and management (E/M) service performed on the same date with modifier 25 appended to the E/M code. Check payer policy.

### Illustration



98940

### Fee Schedule Information

**Medicare Fees (National):** Conversion Factor \$32.3465, Facility Fee: \$21.35, Non Facility Fee: \$26.52

**RVU (Facility):** Work RVU 0.46, Practice Exp. RVU 0.19, Malpractice RVU 0.01, Total RVU 0.66

**RVU (Non-Facility):** Work RVU 0.46, Practice Exp. RVU 0.35, Malpractice RVU 0.01, Total RVU 0.82

**MPFS Payment Policy Indicators:** Global Period 000, Preop 0.00%, Intraop 0.00%, Postop 0.00%, MPFS Status Indicator: A, PC/TC Indicator: 0, Endoscopic Base Code: None

**Practitioner MUE:** 1

### Modifier Allowances

22, 52, 53, 76, 77, 78, 79, 80, 81, 82, 96, 97, 99, AQ, AR, AS, AT, CR, ET, GA, GC, GJ, GR, KX, PD, Q5, Q6, QJ

### NCCI Alerts (version 31.0)

00640<sup>0</sup>, 36591<sup>0</sup>, 36592<sup>0</sup>, 64461<sup>0</sup>, 64462<sup>0</sup>, 64463<sup>0</sup>, 64486<sup>0</sup>, 64487<sup>0</sup>, 64488<sup>0</sup>, 64489<sup>0</sup>, 92012<sup>1</sup>, 92014<sup>1</sup>, 95851<sup>0</sup>, 95852<sup>0</sup>, 96361<sup>1</sup>, 96366<sup>1</sup>, 96367<sup>1</sup>, 96368<sup>1</sup>, 96523<sup>0</sup>, 97112<sup>1</sup>, 97124<sup>1</sup>, 97140<sup>1</sup>, 97161<sup>0</sup>, 97162<sup>0</sup>, 97163<sup>0</sup>, 97164<sup>0</sup>, 97165<sup>0</sup>, 97166<sup>0</sup>, 97167<sup>0</sup>, 97168<sup>0</sup>, 97169<sup>0</sup>, 97170<sup>0</sup>, 97171<sup>0</sup>, 97172<sup>0</sup>, 98926<sup>0</sup>, 98927<sup>0</sup>, 98928<sup>0</sup>, 98929<sup>0</sup>, 99202<sup>1</sup>, 99203<sup>1</sup>, 99204<sup>1</sup>, 99205<sup>1</sup>, 99211<sup>1</sup>, 99212<sup>1</sup>, 99213<sup>1</sup>, 99214<sup>1</sup>, 99215<sup>1</sup>, 99221<sup>1</sup>, 99222<sup>1</sup>, 99223<sup>1</sup>,

99231<sup>1</sup>, 99232<sup>1</sup>, 99233<sup>1</sup>, 99234<sup>1</sup>, 99235<sup>1</sup>, 99236<sup>1</sup>, 99238<sup>1</sup>, 99239<sup>1</sup>, 99242<sup>1</sup>, 99243<sup>1</sup>, 99244<sup>1</sup>, 99245<sup>1</sup>, 99252<sup>1</sup>, 99253<sup>1</sup>, 99254<sup>1</sup>, 99255<sup>1</sup>, 99281<sup>1</sup>, 99282<sup>1</sup>, 99283<sup>1</sup>, 99284<sup>1</sup>, 99285<sup>1</sup>, 99291<sup>1</sup>, 99292<sup>1</sup>, 99304<sup>1</sup>, 99305<sup>1</sup>, 99306<sup>1</sup>, 99307<sup>1</sup>, 99308<sup>1</sup>, 99309<sup>1</sup>, 99310<sup>1</sup>, 99315<sup>1</sup>, 99316<sup>1</sup>, 99341<sup>1</sup>, 99342<sup>1</sup>, 99344<sup>1</sup>, 99345<sup>1</sup>, 99347<sup>1</sup>, 99348<sup>1</sup>, 99349<sup>1</sup>, 99350<sup>1</sup>, 99374<sup>1</sup>, 99375<sup>1</sup>, 99377<sup>1</sup>, 99378<sup>1</sup>, 99446<sup>0</sup>, 99447<sup>0</sup>, 99448<sup>0</sup>, 99449<sup>0</sup>, 99451<sup>0</sup>, 99452<sup>0</sup>, 99455<sup>1</sup>, 99456<sup>1</sup>, 99460<sup>1</sup>, 99461<sup>1</sup>, 99462<sup>1</sup>, 99463<sup>1</sup>, 99465<sup>1</sup>, 99466<sup>1</sup>, 99468<sup>1</sup>, 99469<sup>1</sup>, 99471<sup>1</sup>, 99472<sup>1</sup>, 99475<sup>1</sup>, 99476<sup>1</sup>, 99477<sup>1</sup>, 99478<sup>1</sup>, 99479<sup>1</sup>, 99480<sup>1</sup>, 99483<sup>1</sup>, 99485<sup>1</sup>, 99495<sup>1</sup>, 99496<sup>1</sup>, 99497<sup>1</sup>, G0380<sup>1</sup>, G0381<sup>1</sup>, G0382<sup>1</sup>, G0383<sup>1</sup>, G0384<sup>1</sup>, G0406<sup>1</sup>, G0407<sup>1</sup>, G0408<sup>1</sup>, G0425<sup>1</sup>, G0426<sup>1</sup>, G0427<sup>1</sup>, G0463<sup>1</sup>, G0508<sup>1</sup>, G0509<sup>1</sup>

### ICD-10-CM Cross References

E75.27, G12.1-G12.9, G32.0, G44.1, G44.89, G54.0-G54.4, G54.8, G55, G57.00-G57.03, G57.21, G57.22, G60.0-G60.3, G60.8, G95.20, G95.29, G95.81, G95.89, G95.9, G99.2, M08.1, M12.50, M12.9, M15.0-M15.4, M15.8, M15.9, M19.90-M19.93, M21.759, M21.769, M25.78, M40.00-M40.05, M40.10-M40.15, M40.202-M40.209, M40.292-M40.299, M40.30-M40.37, M40.40-M40.47, M40.50-M40.57, M41.00-M41.08, M41.112-M41.119, M41.122-M41.129, M41.20-M41.27, M41.30-M41.35, M41.40-M41.47, M41.50-M41.57, M41.80-M41.87, M41.9, M43.00-M43.09, M43.10-M43.19, M43.20-M43.28, M43.6, M43.8X1-M43.8X9, M43.9, M45.0-M45.9, M45.5, M45.6, M45.7, M45.8, M45.9, M45. A0-M45.AB, M46.00-M46.09, M46.1, M46.40-M46.45, M46.47, M46.48, M46.49, M46.90-M46.99, M47.011-M47.019, M47.021-M47.029, M47.10-M47.16, M47.20-M47.28, M47.811-M47.819, M47.891-M47.899, M47.9, M48.00-M48.05, M48.07, M48.08, M48.10-M48.19, M48.20-M48.27, M48.30-M48.38, M48.8X1-M48.8X9, M48.9, M49.80-M49.89, M50.00, M50.01, M50.020-M50.023, M50.03, M50.10, M50.11, M50.120-M50.123, M50.13, M50.20, M50.21, M50.23, M50.30, M50.31, M50.33, M50.80, M50.81, M50.820-M50.823, M50.83, M50.90, M50.91, M50.920-M50.923, M50.93, M51.04-M51.06, M51.14-M51.17, M51.24-M51.27, M51.34, M51.35, M51.360-M51.369, M51.370-M51.379, M51.44-M51.47, M51.84, M51.85, M51.9,

M51.A0-M51.A5, M53.0, M53.1, M53.2X7, M53.2X8, M53.3, M53.80-M53.88, M53.9, M54.02, M54.08, M54.10-M54.18, M54.2-M54.6, M54.30-M54.32, M54.40-M54.42, M54.81, M54.89, M54.9, M60.10, M60.9, M62.5A0-M62.5A9, M62.830, M62.838, M62.85, M67.88, M72.9, M79.10-M79.12, M79.18, M79.2, M79.609, M79.7, M93.004, M93.011-M93.014, M93.021-M93.024, M93.031-M93.034, M93.041-M93.044, M93.051-M93.054, M93.061-M93.064, M93.071-M93.074, M95.3, M95.5, M96.1-M96.5, M96.4, M96.5, M99.00-M99.08, M99.05, M99.06, M99.07, M99.08, M99.10-M99.13, M99.20-M99.25, M99.28, M99.29, M99.30-M99.35, M99.38, M99.39, M99.40-M99.45, M99.48, M99.49, M99.50-M99.55, M99.58, M99.59, M99.60-M99.65, M99.68, M99.69, M99.70-M99.75, M99.78, M99.79, M99.81-M99.85, M99.89, Q67.5, Q76.2, Q76.3, Q76.425-Q76.429, Q76.49, R25.2, R26.0, R26.1, R26.81, R26.89, R26.9, R29.3, R51.0, R51.9, S12.9XXS, S13.20XS, S14.109S, S14.2XXA, S14.2XXS, S14.3XXA, S14.5XXA, S14.9XXS, S22.009S, S22.9XXS, S23.20XS, S23.3XXA, S23.41XA, S23.8XXA, S23.9XXA, S24.109S, S24.2XXA, S24.2XXS, S24.4XXA, S24.9XXA, S24.9XXS, S32.9XXS, S33.30XS, S33.6XXA, S33.8XXA, S33.9XXA, S34.109S, S34.139S, S34.21XA, S34.21XS, S34.22XA, S34.22XS, S34.4XXA, S34.5XXA, S34.9XXA, S34.9XXS, S43.306S, S63.006S, S73.006S, S74.00XA, S74.10XA, S74.20XA, S74.8X9A, S83.006S, S83.106S, S93.06XS, S93.306S

## 98941

Chiropractic manipulative treatment (CMT); spinal, 3-4 regions

### Clinical Responsibility

The provider, typically a qualified chiropractic professional, takes a detailed medical history from the patient. He may also take X-rays of the target anatomical site. Based on his initial investigation, the provider decides on a course of treatment. Typically, treatment requires that the patient come in for several sittings with the provider for completion of the treatment course. During the treatment, he instructs the patient to lie down on a special treatment table adjusted to his height. The provider may perform therapy ranging from light touching to vigorous manipulation and massaging.

This code represents when the provider performs treatment on three to four spinal regions.

### Coding Tips

For the same service involving one to two regions, see 98940, Chiropractic manipulative treatment CMT; spinal, one to two regions.

For the same service involving five regions, see 98942, Chiropractic manipulative treatment CMT; spinal, five regions.

You may be able to report a significant, separately identifiable evaluation and management (E/M) service performed on the same date with modifier 25 appended to the E/M code. Check payer policy.

### Fee Schedule Information

**Medicare Fees (National):** Conversion Factor \$32.3465, Facility Fee: \$32.67, Non Facility Fee: \$38.49

**RVU (Facility):** Work RVU 0.71, Practice Exp. RVU 0.29, Malpractice RVU 0.01, Total RVU 1.01

**RVU (Non-Facility):** Work RVU 0.71, Practice Exp. RVU 0.47, Malpractice RVU 0.01, Total RVU 1.19

**MPFS Payment Policy Indicators:** Global Period 000, Preop 0.00%, Intraop 0.00%, Postop 0.00%, MPFS Status Indicator: A, PC/TC Indicator: 0, Endoscopic Base Code: None

**Practitioner MUE:** 1

### Modifier Allowances

22, 52, 53, 76, 77, 78, 79, 80, 81, 82, 96, 97, 99, AQ, AR, AS, AT, CR, ET, GA, GC, GJ, GR, KX, PD, Q5, Q6, QJ

### NCCI Alerts (version 31.0)

00640<sup>0</sup>, 36591<sup>0</sup>, 36592<sup>0</sup>, 64461<sup>0</sup>, 64462<sup>0</sup>, 64463<sup>0</sup>, 64486<sup>0</sup>, 64487<sup>0</sup>, 64488<sup>0</sup>, 64489<sup>0</sup>, 92012<sup>1</sup>, 92014<sup>1</sup>, 95851<sup>0</sup>, 95852<sup>0</sup>, 96361<sup>1</sup>, 96366<sup>1</sup>, 96367<sup>1</sup>, 96368<sup>1</sup>, 96523<sup>0</sup>, 97112<sup>1</sup>, 97124<sup>1</sup>, 97140<sup>1</sup>, 97161<sup>0</sup>, 97162<sup>0</sup>, 97163<sup>0</sup>, 97164<sup>0</sup>, 97165<sup>0</sup>, 97166<sup>0</sup>, 97167<sup>0</sup>, 97168<sup>0</sup>, 97169<sup>0</sup>, 97170<sup>0</sup>, 97171<sup>0</sup>, 97172<sup>0</sup>, 98927<sup>0</sup>, 98928<sup>0</sup>, 98929<sup>0</sup>, 98940<sup>0</sup>, 99202<sup>1</sup>, 99203<sup>1</sup>, 99204<sup>1</sup>, 99205<sup>1</sup>, 99211<sup>1</sup>, 99212<sup>1</sup>, 99213<sup>1</sup>, 99214<sup>1</sup>, 99215<sup>1</sup>, 99221<sup>1</sup>, 99222<sup>1</sup>, 99223<sup>1</sup>, 99231<sup>1</sup>, 99232<sup>1</sup>, 99233<sup>1</sup>, 99234<sup>1</sup>, 99235<sup>1</sup>, 99236<sup>1</sup>, 99238<sup>1</sup>, 99239<sup>1</sup>, 99242<sup>1</sup>, 99243<sup>1</sup>, 99244<sup>1</sup>, 99245<sup>1</sup>, 99252<sup>1</sup>, 99253<sup>1</sup>, 99254<sup>1</sup>, 99255<sup>1</sup>, 99281<sup>1</sup>, 99282<sup>1</sup>, 99283<sup>1</sup>, 99284<sup>1</sup>, 99285<sup>1</sup>, 99291<sup>1</sup>, 99292<sup>1</sup>, 99304<sup>1</sup>, 99305<sup>1</sup>, 99306<sup>1</sup>, 99307<sup>1</sup>, 99308<sup>1</sup>, 99309<sup>1</sup>, 99310<sup>1</sup>, 99315<sup>1</sup>, 99316<sup>1</sup>, 99341<sup>1</sup>, 99342<sup>1</sup>, 99344<sup>1</sup>, 99345<sup>1</sup>, 99347<sup>1</sup>, 99348<sup>1</sup>, 99349<sup>1</sup>, 99350<sup>1</sup>, 99374<sup>1</sup>, 99375<sup>1</sup>, 99377<sup>1</sup>, 99378<sup>1</sup>, 99446<sup>0</sup>, 99447<sup>0</sup>, 99448<sup>0</sup>, 99449<sup>0</sup>, 99451<sup>0</sup>, 99452<sup>0</sup>,

99455<sup>1</sup>, 99456<sup>1</sup>, 99460<sup>1</sup>, 99461<sup>1</sup>, 99462<sup>1</sup>, 99463<sup>1</sup>, 99465<sup>1</sup>, 99466<sup>1</sup>, 99468<sup>1</sup>, 99469<sup>1</sup>, 99471<sup>1</sup>, 99472<sup>1</sup>, 99475<sup>1</sup>, 99476<sup>1</sup>, 99477<sup>1</sup>, 99478<sup>1</sup>, 99479<sup>1</sup>, 99480<sup>1</sup>, 99483<sup>1</sup>, 99485<sup>1</sup>, 99495<sup>1</sup>, 99496<sup>1</sup>, 99497<sup>1</sup>, G0380<sup>1</sup>, G0381<sup>1</sup>, G0382<sup>1</sup>, G0383<sup>1</sup>, G0384<sup>1</sup>, G0406<sup>1</sup>, G0407<sup>1</sup>, G0408<sup>1</sup>, G0425<sup>1</sup>, G0426<sup>1</sup>, G0427<sup>1</sup>, G0463<sup>1</sup>, G0508<sup>1</sup>, G0509<sup>1</sup>

### ICD-10-CM Cross References

E75.27, G12.1-G12.9, G32.0, G44.1, G44.89, G54.0-G54.4, G54.8, G55, G57.00-G57.03, G57.21, G57.22, G60.0-G60.3, G60.8, G95.20, G95.29, G95.81, G95.89, G95.9, G99.2, M08.1, M12.50, M12.9, M15.0-M15.4, M15.8, M15.9, M19.90-M19.93, M21.759, M21.769, M25.78, M40.00-M40.05, M40.10-M40.15, M40.202-M40.209, M40.292-M40.299, M40.30-M40.37, M40.40-M40.47, M40.50-M40.57, M41.00-M41.08, M41.112-M41.119, M41.122-M41.129, M41.20-M41.27, M41.30-M41.35, M41.40-M41.47, M41.50-M41.57, M41.80-M41.87, M41.9, M43.00-M43.09, M43.10-M43.19, M43.20-M43.28, M43.6, M43.8X1-M43.8X9, M43.9, M45.0-M45.9, M45.5, M45.6, M45.7, M45.8, M45.9, M45. A0-M45.AB, M46.00-M46.09, M46.1, M46.40-M46.45, M46.47, M46.48, M46.49, M46.90-M46.99, M47.011-M47.019, M47.021-M47.029, M47.10-M47.16, M47.20-M47.28, M47.811-M47.819, M47.891-M47.899, M47.9, M48.00-M48.05, M48.07, M48.08, M48.10-M48.19, M48.20-M48.27, M48.30-M48.38, M48.8X1-M48.8X9, M48.9, M49.80-M49.89, M50.00, M50.01, M50.020-M50.023, M50.03, M50.10, M50.11, M50.120-M50.123, M50.13, M50.20, M50.21, M50.23, M50.30, M50.31, M50.33, M50.80, M50.81, M50.820-M50.823, M50.83, M50.90, M50.91, M50.920-M50.923, M50.93, M51.04-M51.06, M51.14-M51.17, M51.24-M51.27, M51.34, M51.35, M51.360-M51.369, M51.370-M51.379, M51.44-M51.47, M51.84, M51.85, M51.9, M51.A0-M51.A5, M53.0, M53.1, M53.2X7, M53.2X8, M53.3, M53.80-M53.88, M53.9, M54.02, M54.08, M54.10-M54.18, M54.2-M54.6, M54.30-M54.32, M54.40-M54.42, M54.81, M54.89, M54.9, M60.10, M60.9, M62.5A0-M62.5A9, M62.830, M62.838, M62.85, M67.88, M72.9, M79.10-M79.12, M79.18, M79.2, M79.609, M79.7, M93.004, M93.011-M93.014, M93.021-M93.024, M93.031-M93.034, M93.041-M93.044, M93.051-M93.054, M93.061-M93.064, M93.071-M93.074, M95.3, M95.5, M96.1-M96.5, M96.4, M96.5, M99.00-M99.08, M99.05, M99.06, M99.07,

# HCPCS Level II Codes

## Outpatient PPS

### C7500

Debridement, bone including epidermis, dermis, subcutaneous tissue, muscle and/or fascia, if performed, first 20 sq cm or less with manual preparation and insertion of deep (eg, subfacial) drug-delivery device(s)

### Clinical Responsibility

When the patient is appropriately prepped and anesthetized, the provider cleanses the wound. The provider uses a scalpel, scissors, or other appropriate instruments to remove damaged, diseased, or unhealthy material from the bone. The provider also may debride the epidermis and dermis skin layers, subcutaneous tissue, muscle, and/or fascia, if needed. Use this code for debridement of up to the first 20 cm<sup>2</sup>. The provider also manually prepares and inserts one or more devices to deliver drugs to the area. Insertion is deep, such as in the subfascial layer.

### BETOS

**P5A:** Ambulatory procedures - skin

### C7504

Percutaneous vertebroplasties (bone biopsies included when performed), first cervicothoracic and any additional cervicothoracic or lumbosacral vertebral bodies, unilateral or bilateral injection, inclusive of all imaging guidance

### Clinical Responsibility

When the patient is appropriately prepped and anesthetized, the provider uses imaging guidance to guide a needle through the skin and to the fractured area of a cervicothoracic vertebra (spine bone in the neck and upper/middle back area). The provider may use a special needle to take a bone biopsy for analysis. The provider injects bone cement into the fractured vertebra. The provider may inject one or both sides of the vertebra. The bone cement fills the crack to stabilize the bone. The provider may repeat the procedure on additional cervicothoracic or lumbosacral (lower back and base of the

spine) vertebrae. The provider removes the needle.

### BETOS

**P3D:** Major procedure, orthopedic - other

### C7505

Percutaneous vertebroplasties (bone biopsies included when performed), first lumbosacral and any additional cervicothoracic or lumbosacral vertebral bodies, unilateral or bilateral injection, inclusive of all imaging guidance

### Clinical Responsibility

When the patient is appropriately prepped and anesthetized, the provider uses imaging guidance to guide a needle through the skin and to the fractured area of a lumbosacral vertebra (spine bone in the area of the lower back and base of the spine). The provider may use a special needle to take a bone biopsy for analysis. The provider injects bone cement into the fractured vertebra. The provider may inject one or both sides of the vertebra. The bone cement fills the crack to stabilize the bone. The provider may repeat the procedure on additional cervicothoracic (neck and upper/middle back) or lumbosacral vertebrae. The provider removes the needle.

### BETOS

**P3D:** Major procedure, orthopedic - other

### C7506

Arthrodesis, interphalangeal joints, with or without internal fixation

### Clinical Responsibility

When the patient is appropriately prepped and anesthetized, the provider makes an incision in the skin over the affected joint in the finger. The provider dissects down through the subcutaneous tissue, preserving the nerves and veins. The provider then retracts the muscle to gain access to the joint for fusion, incises the

joint capsule, and enters the joint. The provider brings the bones of the joint close to each other and fuses the joint with or without using implants like wire, screws, or plates. Finally, the provider stops all bleeding at the surgical site and closes the wound.

### BETOS

**P5B:** Ambulatory procedures - musculoskeletal

### C7507

Percutaneous vertebral augmentations, first thoracic and any additional thoracic or lumbar vertebral bodies, including cavity creations (fracture reductions and bone biopsies included when performed) using mechanical device (eg, kyphoplasty), unilateral or bilateral cannulations, inclusive of all imaging guidance

### Clinical Responsibility

When the patient is appropriately prepped and anesthetized, the provider uses imaging guidance to insert instruments such as a needle and cannula (tube) through the skin into a thoracic vertebral body (upper/middle back spine bone). The provider inserts a balloon through the cannula into the vertebra and then inflates the balloon. This restores the height of the vertebra. The provider then injects bone cement into this cavity to make sure the bone does not collapse again. The provider may cannulate and perform the procedure on one or both sides of the vertebra. The provider also may reduce the fracture (bringing bone into proper alignment) and perform a bone biopsy by removing bone for analysis. This code represents the service on the first thoracic vertebral body and any additional thoracic or lumbar (lower back) vertebral bodies. The provider removes the instruments and completes the procedure.

### BETOS

**P3D:** Major procedure, orthopedic - other

## C7508

Percutaneous vertebral augmentations, first lumbar and any additional thoracic or lumbar vertebral bodies, including cavity creations (fracture reductions and bone biopsies included when performed) using mechanical device (eg, kyphoplasty), unilateral or bilateral cannulations, inclusive of all imaging guidance

### Clinical Responsibility

When the patient is appropriately prepped and anesthetized, the provider uses imaging guidance to insert instruments such as a needle and cannula (tube) through the skin into a lumbar vertebral body (lower back spine bone). The provider inserts a balloon through the cannula into the vertebra and then inflates the balloon. This restores the height of the vertebra. The provider then injects bone cement into this cavity to make sure the bone does not collapse again. The provider may cannulate and perform the procedure on one or both sides of the vertebra. The provider also may reduce the fracture (bringing bone into proper alignment) and perform a bone biopsy by removing bone for analysis. This code represents the service on the first lumbar vertebral body and any additional thoracic or lumbar (lower back) vertebral bodies. The provider removes the instruments and completes the procedure.

### BETOS

**P3D:** Major procedure, orthopedic - other

## C7551

Excision of major peripheral nerve neuroma, except sciatic, with implantation of nerve end into bone or muscle

### Clinical Responsibility

When the patient is appropriately prepped and anesthetized, the provider incises the skin over the location of a neuroma (a growth in nerve tissue) located on one of the major peripheral nerves of the body other than the sciatic nerve. Peripheral nerves connect the brain and spinal cord to the body. The provider exposes the neuroma, dissects it free of surrounding tissue, and excises the neuroma. The provider then implants the nerve end into bone or muscle. The provider closes the surgical site.

## BETOS

**P5E:** Ambulatory procedures - other

## C8003

Implantation of medial knee extraarticular implantable shock absorber spanning the knee joint from distal femur to proximal tibia, open, includes measurements, positioning and adjustments, with imaging guidance (eg, fluoroscopy)

### Clinical Responsibility

When the patient is appropriately prepped and anesthetized, the provider accesses the knee joint through an open approach (wide incision) and places an extraarticular (outside the joint) shock absorber device from the distal femur (lower end of the thigh bone) to the proximal tibia (upper end of the shinbone). The shock absorber is designed to reduce stress and impact on the knee during movement, aiding in conditions like arthritis. This code includes the implant as well as necessary measurements, positioning, and adjustments. The provider uses fluoroscopic imaging to guide the procedure.

### BETOS

**P3D:** Major procedure, orthopedic - other

## C9781

Arthroscopy, shoulder, surgical; with implantation of subacromial spacer (e.g., balloon), includes debridement (e.g., limited or extensive), subacromial decompression, acromioplasty, and biceps tenodesis when performed

### Clinical Responsibility

When the patient is appropriately prepped and anesthetized, the provider makes one or more small incisions in the shoulder area. The provider inserts one or more arthroscopic tools to assess the shoulder. The provider may perform limited or extensive debridement, but this service is not required to use the code. The provider typically uses a tool to measure the space where the spacer will go to select the appropriate size. The provider inserts and expands the spacer under the acromion using an arthroscopic tool. As an example, providers may use a spacer when a patient has a massive irreparable rotator cuff

tear. Inserting the spacer between the acromion (which forms the point of the shoulder) and the head of the upper arm bone may help reduce pain and improve shoulder function. The provider also may perform subacromial decompression, acromioplasty, and biceps tenodesis at the same session, but these services are not required. For subacromial decompression and acromioplasty, the provider makes more space under the acromion, which may involve removing bone and tissue. For biceps tenodesis, the provider anchors the biceps tendon in place by excising the damaged portion and reattaching healthy tendon to the humerus (upper arm bone). When the procedure is complete, the provider irrigates the area, checks for bleeding, removes any instruments, and closes the incisions.

### BETOS

**P8A:** Endoscopy - arthroscopy



# ICD-10-CM Cross Reference Details

<b>A01.04</b>	Typhoid arthritis	<b>C41.0</b>	Malignant neoplasm of bones of skull and face
<b>A01.05</b>	Typhoid osteomyelitis	<b>C41.1</b>	Malignant neoplasm of mandible
<b>A18.01</b>	Tuberculosis of spine	<b>C41.2</b>	Malignant neoplasm of vertebral column
<b>A18.02</b>	Tuberculous arthritis of other joints	<b>C41.3</b>	Malignant neoplasm of ribs, sternum and clavicle
<b>A18.03</b>	Tuberculosis of other bones	<b>C41.4</b>	Malignant neoplasm of pelvic bones, sacrum and coccyx
<b>A18.09</b>	Other musculoskeletal tuberculosis	<b>C41.9</b>	Malignant neoplasm of bone and articular cartilage, unspecified
<b>A39.83</b>	Meningococcal arthritis	<b>C43.0</b>	Malignant melanoma of lip
<b>A39.84</b>	Postmeningococcal arthritis	<b>C43.20</b>	Malignant melanoma of unspecified ear and external auricular canal
<b>A41.2</b>	Sepsis due to unspecified staphylococcus	<b>C43.21</b>	Malignant melanoma of right ear and external auricular canal
<b>A52.16</b>	Charcot's arthropathy (tabetic)	<b>C43.22</b>	Malignant melanoma of left ear and external auricular canal
<b>A54.41</b>	Gonococcal spondylopathy	<b>C43.30</b>	Malignant melanoma of unspecified part of face
<b>A54.42</b>	Gonococcal arthritis	<b>C43.31</b>	Malignant melanoma of nose
<b>A54.49</b>	Gonococcal infection of other musculoskeletal tissue	<b>C43.39</b>	Malignant melanoma of other parts of face
<b>A79.82</b>	Anaplasmosis [A. phagocytophilum]	<b>C43.4</b>	Malignant melanoma of scalp and neck
<b>A80.30</b>	Acute paralytic poliomyelitis, unspecified	<b>C43.51</b>	Malignant melanoma of anal skin
<b>A80.39</b>	Other acute paralytic poliomyelitis	<b>C43.59</b>	Malignant melanoma of other part of trunk
<b>A80.9</b>	Acute poliomyelitis, unspecified	<b>C43.60</b>	Malignant melanoma of unspecified upper limb, including shoulder
<b>B90.2</b>	Sequelae of tuberculosis of bones and joints	<b>C43.61</b>	Malignant melanoma of right upper limb, including shoulder
<b>B91</b>	Sequelae of poliomyelitis	<b>C43.62</b>	Malignant melanoma of left upper limb, including shoulder
<b>B95.2</b>	Enterococcus as the cause of diseases classified elsewhere	<b>C43.70</b>	Malignant melanoma of unspecified lower limb, including hip
<b>B96.22</b>	Other specified Shiga toxin-producing Escherichia coli [E. coli] [STEC] as the cause of diseases classified elsewhere	<b>C43.71</b>	Malignant melanoma of right lower limb, including hip
<b>B96.89</b>	Other specified bacterial agents as the cause of diseases classified elsewhere	<b>C43.72</b>	Malignant melanoma of left lower limb, including hip
<b>C05.0</b>	Malignant neoplasm of hard palate	<b>C45.0</b>	Mesothelioma of pleura
<b>C05.8</b>	Malignant neoplasm of overlapping sites of palate	<b>C45.1</b>	Mesothelioma of peritoneum
<b>C05.9</b>	Malignant neoplasm of palate, unspecified	<b>C45.2</b>	Mesothelioma of pericardium
<b>C15.3</b>	Malignant neoplasm of upper third of esophagus	<b>C45.7</b>	Mesothelioma of other sites
<b>C15.4</b>	Malignant neoplasm of middle third of esophagus	<b>C45.9</b>	Mesothelioma, unspecified
<b>C15.5</b>	Malignant neoplasm of lower third of esophagus	<b>C47.0</b>	Malignant neoplasm of peripheral nerves of head, face and neck
<b>C15.8</b>	Malignant neoplasm of overlapping sites of esophagus	<b>C47.10</b>	Malignant neoplasm of peripheral nerves of unspecified upper limb, including shoulder
<b>C15.9</b>	Malignant neoplasm of esophagus, unspecified	<b>C47.11</b>	Malignant neoplasm of peripheral nerves of right upper limb, including shoulder
<b>C16.9</b>	Malignant neoplasm of stomach, unspecified	<b>C47.12</b>	Malignant neoplasm of peripheral nerves of left upper limb, including shoulder
<b>C17.9</b>	Malignant neoplasm of small intestine, unspecified	<b>C47.20</b>	Malignant neoplasm of peripheral nerves of unspecified lower limb, including hip
<b>C18.8</b>	Malignant neoplasm of overlapping sites of colon	<b>C47.21</b>	Malignant neoplasm of peripheral nerves of right lower limb, including hip
<b>C18.9</b>	Malignant neoplasm of colon, unspecified	<b>C47.22</b>	Malignant neoplasm of peripheral nerves of left lower limb, including hip
<b>C19</b>	Malignant neoplasm of rectosigmoid junction	<b>C47.3</b>	Malignant neoplasm of peripheral nerves of thorax
<b>C20</b>	Malignant neoplasm of rectum	<b>C47.4</b>	Malignant neoplasm of peripheral nerves of abdomen
<b>C21.0</b>	Malignant neoplasm of anus, unspecified	<b>C47.5</b>	Malignant neoplasm of peripheral nerves of pelvis
<b>C23</b>	Malignant neoplasm of gallbladder	<b>C47.6</b>	Malignant neoplasm of peripheral nerves of trunk, unspecified
<b>C24.9</b>	Malignant neoplasm of biliary tract, unspecified	<b>C47.8</b>	Malignant neoplasm of overlapping sites of peripheral nerves and autonomic nervous system
<b>C25.9</b>	Malignant neoplasm of pancreas, unspecified	<b>C47.9</b>	Malignant neoplasm of peripheral nerves and autonomic nervous system, unspecified
<b>C26.0</b>	Malignant neoplasm of intestinal tract, part unspecified	<b>C48.0</b>	Malignant neoplasm of retroperitoneum
<b>C26.9</b>	Malignant neoplasm of ill-defined sites within the digestive system	<b>C48.1</b>	Malignant neoplasm of specified parts of peritoneum
<b>C40.00</b>	Malignant neoplasm of scapula and long bones of unspecified upper limb	<b>C48.2</b>	Malignant neoplasm of peritoneum, unspecified
<b>C40.01</b>	Malignant neoplasm of scapula and long bones of right upper limb	<b>C48.8</b>	Malignant neoplasm of overlapping sites of retroperitoneum and peritoneum
<b>C40.02</b>	Malignant neoplasm of scapula and long bones of left upper limb	<b>C49.0</b>	Malignant neoplasm of connective and soft tissue of head, face and neck
<b>C40.10</b>	Malignant neoplasm of short bones of unspecified upper limb	<b>C49.10</b>	Malignant neoplasm of connective and soft tissue of unspecified upper limb, including shoulder
<b>C40.11</b>	Malignant neoplasm of short bones of right upper limb	<b>C49.11</b>	Malignant neoplasm of connective and soft tissue of right upper limb, including shoulder
<b>C40.12</b>	Malignant neoplasm of short bones of left upper limb	<b>C49.12</b>	Malignant neoplasm of connective and soft tissue of left upper limb, including shoulder
<b>C40.20</b>	Malignant neoplasm of long bones of unspecified lower limb	<b>C49.20</b>	Malignant neoplasm of connective and soft tissue of unspecified lower limb, including hip
<b>C40.21</b>	Malignant neoplasm of long bones of right lower limb	<b>C49.21</b>	Malignant neoplasm of connective and soft tissue of right lower limb, including hip
<b>C40.22</b>	Malignant neoplasm of long bones of left lower limb	<b>C49.22</b>	Malignant neoplasm of connective and soft tissue of left lower limb, including hip
<b>C40.30</b>	Malignant neoplasm of short bones of unspecified lower limb	<b>C49.3</b>	Malignant neoplasm of connective and soft tissue of thorax
<b>C40.31</b>	Malignant neoplasm of short bones of right lower limb		
<b>C40.32</b>	Malignant neoplasm of short bones of left lower limb		
<b>C40.80</b>	Malignant neoplasm of overlapping sites of bone and articular cartilage of unspecified limb		
<b>C40.81</b>	Malignant neoplasm of overlapping sites of bone and articular cartilage of right limb		
<b>C40.82</b>	Malignant neoplasm of overlapping sites of bone and articular cartilage of left limb		
<b>C40.90</b>	Malignant neoplasm of unspecified bones and articular cartilage of unspecified limb		
<b>C40.91</b>	Malignant neoplasm of unspecified bones and articular cartilage of right limb		
<b>C40.92</b>	Malignant neoplasm of unspecified bones and articular cartilage of left limb		

<b>C49.4</b>	Malignant neoplasm of connective and soft tissue of abdomen	<b>C75.5</b>	Malignant neoplasm of aortic body and other paraganglia
<b>C49.5</b>	Malignant neoplasm of connective and soft tissue of pelvis	<b>C75.8</b>	Malignant neoplasm with pluriglandular involvement, unspecified
<b>C49.6</b>	Malignant neoplasm of connective and soft tissue of trunk, unspecified	<b>C75.9</b>	Malignant neoplasm of endocrine gland, unspecified
<b>C49.8</b>	Malignant neoplasm of overlapping sites of connective and soft tissue	<b>C76.1</b>	Malignant neoplasm of thorax
<b>C49.9</b>	Malignant neoplasm of connective and soft tissue, unspecified	<b>C76.2</b>	Malignant neoplasm of abdomen
<b>C4A.70</b>	Merkel cell carcinoma of unspecified lower limb, including hip	<b>C76.3</b>	Malignant neoplasm of pelvis
<b>C4A.71</b>	Merkel cell carcinoma of right lower limb, including hip	<b>C76.40</b>	Malignant neoplasm of unspecified upper limb
<b>C4A.72</b>	Merkel cell carcinoma of left lower limb, including hip	<b>C76.41</b>	Malignant neoplasm of right upper limb
<b>C50.011</b>	Malignant neoplasm of nipple and areola, right female breast	<b>C76.42</b>	Malignant neoplasm of left upper limb
<b>C50.012</b>	Malignant neoplasm of nipple and areola, left female breast	<b>C76.50</b>	Malignant neoplasm of unspecified lower limb
<b>C50.019</b>	Malignant neoplasm of nipple and areola, unspecified female breast	<b>C76.51</b>	Malignant neoplasm of right lower limb
<b>C50.111</b>	Malignant neoplasm of central portion of right female breast	<b>C76.52</b>	Malignant neoplasm of left lower limb
<b>C50.112</b>	Malignant neoplasm of central portion of left female breast	<b>C77.3</b>	Secondary and unspecified malignant neoplasm of axilla and upper limb lymph nodes
<b>C50.119</b>	Malignant neoplasm of central portion of unspecified female breast	<b>C79.2</b>	Secondary malignant neoplasm of skin
<b>C50.211</b>	Malignant neoplasm of upper-inner quadrant of right female breast	<b>C79.49</b>	Secondary malignant neoplasm of other parts of nervous system
<b>C50.212</b>	Malignant neoplasm of upper-inner quadrant of left female breast	<b>C79.51</b>	Secondary malignant neoplasm of bone
<b>C50.219</b>	Malignant neoplasm of upper-inner quadrant of unspecified female breast	<b>C79.52</b>	Secondary malignant neoplasm of bone marrow
<b>C50.311</b>	Malignant neoplasm of lower-inner quadrant of right female breast	<b>C79.81</b>	Secondary malignant neoplasm of breast
<b>C50.312</b>	Malignant neoplasm of lower-inner quadrant of left female breast	<b>C79.89</b>	Secondary malignant neoplasm of other specified sites
<b>C50.319</b>	Malignant neoplasm of lower-inner quadrant of unspecified female breast	<b>C79.9</b>	Secondary malignant neoplasm of unspecified site
<b>C50.411</b>	Malignant neoplasm of upper-outer quadrant of right female breast	<b>C7B.03</b>	Secondary carcinoid tumors of bone
<b>C50.412</b>	Malignant neoplasm of upper-outer quadrant of left female breast	<b>C7B.1</b>	Secondary Merkel cell carcinoma
<b>C50.419</b>	Malignant neoplasm of upper-outer quadrant of unspecified female breast	<b>C82.55</b>	Diffuse follicle center lymphoma, lymph nodes of inguinal region and lower limb
<b>C50.511</b>	Malignant neoplasm of lower-outer quadrant of right female breast	<b>C83.36</b>	Diffuse large B-cell lymphoma, intrapelvic lymph nodes
<b>C50.512</b>	Malignant neoplasm of lower-outer quadrant of left female breast	<b>C83.390</b>	Primary central nervous system lymphoma
<b>C50.519</b>	Malignant neoplasm of lower-outer quadrant of unspecified female breast	<b>C83.56</b>	Lymphoblastic (diffuse) lymphoma, intrapelvic lymph nodes
<b>C50.611</b>	Malignant neoplasm of axillary tail of right female breast	<b>C84.95</b>	Mature T/NK-cell lymphomas, unspecified, lymph nodes of inguinal region and lower limb
<b>C50.612</b>	Malignant neoplasm of axillary tail of left female breast	<b>C84.A5</b>	Cutaneous T-cell lymphoma, unspecified, lymph nodes of inguinal region and lower limb
<b>C50.619</b>	Malignant neoplasm of axillary tail of unspecified female breast	<b>C84.Z5</b>	Other mature T/NK-cell lymphomas, lymph nodes of inguinal region and lower limb
<b>C50.621</b>	Malignant neoplasm of axillary tail of right male breast	<b>C85.15</b>	Unspecified B-cell lymphoma, lymph nodes of inguinal region and lower limb
<b>C50.622</b>	Malignant neoplasm of axillary tail of left male breast	<b>C85.25</b>	Mediastinal (thymic) large B-cell lymphoma, lymph nodes of inguinal region and lower limb
<b>C50.629</b>	Malignant neoplasm of axillary tail of unspecified male breast	<b>C85.85</b>	Other specified types of non-Hodgkin lymphoma, lymph nodes of inguinal region and lower limb
<b>C50.811</b>	Malignant neoplasm of overlapping sites of right female breast	<b>C85.95</b>	Non-Hodgkin lymphoma, unspecified, lymph nodes of inguinal region and lower limb
<b>C50.812</b>	Malignant neoplasm of overlapping sites of left female breast	<b>C90.00</b>	Multiple myeloma not having achieved remission
<b>C50.819</b>	Malignant neoplasm of overlapping sites of unspecified female breast	<b>C90.01</b>	Multiple myeloma in remission
<b>C50.911</b>	Malignant neoplasm of unspecified site of right female breast	<b>C90.02</b>	Multiple myeloma in relapse
<b>C50.912</b>	Malignant neoplasm of unspecified site of left female breast	<b>D03.60</b>	Melanoma in situ of unspecified upper limb, including shoulder
<b>C50.919</b>	Malignant neoplasm of unspecified site of unspecified female breast	<b>D03.61</b>	Melanoma in situ of right upper limb, including shoulder
<b>C70.1</b>	Malignant neoplasm of spinal meninges	<b>D03.62</b>	Melanoma in situ of left upper limb, including shoulder
<b>C72.0</b>	Malignant neoplasm of spinal cord	<b>D03.70</b>	Melanoma in situ of unspecified lower limb, including hip
<b>C72.1</b>	Malignant neoplasm of cauda equina	<b>D03.71</b>	Melanoma in situ of right lower limb, including hip
<b>C73</b>	Malignant neoplasm of thyroid gland	<b>D03.72</b>	Melanoma in situ of left lower limb, including hip
<b>C74.00</b>	Malignant neoplasm of cortex of unspecified adrenal gland	<b>D04.60</b>	Carcinoma in situ of skin of unspecified upper limb, including shoulder
<b>C74.01</b>	Malignant neoplasm of cortex of right adrenal gland	<b>D04.61</b>	Carcinoma in situ of skin of right upper limb, including shoulder
<b>C74.02</b>	Malignant neoplasm of cortex of left adrenal gland	<b>D04.62</b>	Carcinoma in situ of skin of left upper limb, including shoulder
<b>C74.10</b>	Malignant neoplasm of medulla of unspecified adrenal gland	<b>D04.70</b>	Carcinoma in situ of skin of unspecified lower limb, including hip
<b>C74.11</b>	Malignant neoplasm of medulla of right adrenal gland	<b>D04.71</b>	Carcinoma in situ of skin of right lower limb, including hip
<b>C74.12</b>	Malignant neoplasm of medulla of left adrenal gland	<b>D04.72</b>	Carcinoma in situ of skin of left lower limb, including hip
<b>C74.90</b>	Malignant neoplasm of unspecified part of unspecified adrenal gland	<b>D04.8</b>	Carcinoma in situ of skin of other sites
<b>C74.91</b>	Malignant neoplasm of unspecified part of right adrenal gland	<b>D13.91</b>	Familial adenomatous polyposis
<b>C74.92</b>	Malignant neoplasm of unspecified part of left adrenal gland	<b>D13.99</b>	Benign neoplasm of ill-defined sites within the digestive system
<b>C75.0</b>	Malignant neoplasm of parathyroid gland	<b>D16.00</b>	Benign neoplasm of scapula and long bones of unspecified upper limb
<b>C75.1</b>	Malignant neoplasm of pituitary gland	<b>D16.01</b>	Benign neoplasm of scapula and long bones of right upper limb
<b>C75.2</b>	Malignant neoplasm of craniopharyngeal duct	<b>D16.02</b>	Benign neoplasm of scapula and long bones of left upper limb
<b>C75.3</b>	Malignant neoplasm of pineal gland	<b>D16.10</b>	Benign neoplasm of short bones of unspecified upper limb
<b>C75.4</b>	Malignant neoplasm of carotid body	<b>D16.11</b>	Benign neoplasm of short bones of right upper limb
		<b>D16.12</b>	Benign neoplasm of short bones of left upper limb
		<b>D16.20</b>	Benign neoplasm of long bones of unspecified lower limb



# Modifier Descriptors

Modifier	Description
CPT® Modifiers	
<b>22</b>	Increased Procedural Services
<b>23</b>	Unusual Anesthesia
<b>24</b>	Unrelated Evaluation and Management Service by the Same Physician or Other Qualified Health Care Professional During a Postoperative Period
<b>25</b>	Significant, Separately Identifiable Evaluation and Management Service by the Same Physician or Other Qualified Health Care Professional on the Same Day of the Procedure or Other Service
<b>26</b>	Professional Component
<b>27</b>	Multiple Outpatient Hospital E/M Encounters on the Same Date
<b>32</b>	Mandated Services
<b>33</b>	Preventive Services
<b>47</b>	Anesthesia by Surgeon
<b>50</b>	Bilateral Procedure
<b>51</b>	Multiple Procedures
<b>52</b>	Reduced Services
<b>53</b>	Discontinued Procedure
<b>54</b>	Surgical Care Only
<b>55</b>	Postoperative Management Only
<b>56</b>	Preoperative Management Only
<b>57</b>	Decision for Surgery
<b>58</b>	Staged or Related Procedure or Service by the Same Physician or Other Qualified Health Care Professional During the Postoperative Period
<b>59</b>	Distinct Procedural Service
<b>62</b>	Two Surgeons
<b>63</b>	Procedure Performed on Infants less than 4 kg
<b>66</b>	Surgical Team
<b>73</b>	Discontinued Out-Patient Hospital/Ambulatory Surgery Center (ASC) Procedure Prior to the Administration of Anesthesia
<b>74</b>	Discontinued Out-Patient Hospital/Ambulatory Surgery Center (ASC) Procedure After Administration of Anesthesia
<b>76</b>	Repeat Procedure or Service by Same Physician or Other Qualified Health Care Professional
<b>77</b>	Repeat Procedure by Another Physician or Other Qualified Health Care Professional

Modifier	Description
<b>78</b>	Unplanned Return to the Operating/Procedure Room by the Same Physician or Other Qualified Health Care Professional Following Initial Procedure for a Related Procedure During the Postoperative Period
<b>79</b>	Unrelated Procedure or Service by the Same Physician or Other Qualified Health Care Professional During the Postoperative Period
<b>80</b>	Assistant Surgeon
<b>81</b>	Minimum Assistant Surgeon
<b>82</b>	Assistant Surgeon (when qualified resident surgeon not available)
<b>90</b>	Reference (Outside) Laboratory
<b>91</b>	Repeat Clinical Diagnostic Laboratory Test
<b>92</b>	Alternative Laboratory Platform Testing
<b>93</b>	Synchronous Telemedicine Service Rendered Via Telephone or Other Real-Time Interactive Audio-Only Telecommunications System
<b>95</b>	Synchronous Telemedicine Service Rendered Via a Real-Time Interactive Audio and Video Telecommunications System
<b>96</b>	Habilitative Services
<b>97</b>	Rehabilitative Services
<b>99</b>	Multiple Modifiers
CPT® Category II Modifiers	
<b>1P</b>	Performance Measure Exclusion Modifier due to Medical Reasons
<b>2P</b>	Performance Measure Exclusion Modifier due to Patient Reasons
<b>3P</b>	Performance Measure Exclusion Modifier due to System Reasons
<b>8P</b>	Performance Measure Reporting Modifier - Action Not Performed, Reason Not Otherwise Specified
HCPCS Level II Modifiers	
<b>A1</b>	Dressing for one wound
<b>A2</b>	Dressing for two wounds
<b>A3</b>	Dressing for three wounds
<b>A4</b>	Dressing for four wounds
<b>A5</b>	Dressing for five wounds
<b>A6</b>	Dressing for six wounds
<b>A7</b>	Dressing for seven wounds
<b>A8</b>	Dressing for eight wounds
<b>A9</b>	Dressing for nine or more wounds
<b>AA</b>	Anesthesia services performed personally by anesthesiologist

Modifier	Description
<b>AB</b>	Audiology service furnished personally by an audiologist without a physician/npp order for non-acute hearing assessment unrelated to disequilibrium, or hearing aids, or examinations for the purpose of prescribing, fitting, or changing hearing aids; service may be performed once every 12 months, per beneficiary
<b>AD</b>	Medical supervision by a physician: more than four concurrent anesthesia procedures
<b>AE</b>	Registered dietician
<b>AF</b>	Specialty physician
<b>AG</b>	Primary physician
<b>AH</b>	Clinical psychologist
<b>AI</b>	Principal physician of record
<b>AJ</b>	Clinical social worker
<b>AK</b>	Non participating physician
<b>AM</b>	Physician, team member service
<b>AO</b>	Alternate payment method declined by provider of service
<b>AP</b>	Determination of refractive state was not performed in the course of diagnostic ophthalmological examination
<b>AQ</b>	Physician providing a service in an unlisted health professional shortage area (HPSA)
<b>AR</b>	Physician provider services in a physician scarcity area
<b>AS</b>	Physician assistant, nurse practitioner, or clinical nurse specialist services for assistant at surgery
<b>AT</b>	Acute treatment (this modifier should be used when reporting service 98940, 98941, 98942)
<b>AU</b>	Item furnished in conjunction with a urological, ostomy, or tracheostomy supply
<b>AV</b>	Item furnished in conjunction with a prosthetic device, prosthetic or orthotic
<b>AW</b>	Item furnished in conjunction with a surgical dressing
<b>AX</b>	Item furnished in conjunction with dialysis services
<b>AY</b>	Item or service furnished to an ESRD patient that is not for the treatment of ESRD
<b>AZ</b>	Physician providing a service in a dental health professional shortage area for the purpose of an electronic health record incentive payment
<b>BA</b>	Item furnished in conjunction with parenteral enteral nutrition (PEN) services
<b>BL</b>	Special acquisition of blood and blood products
<b>BO</b>	Orally administered nutrition, not by feeding tube
<b>BP</b>	The beneficiary has been informed of the purchase and rental options and has elected to purchase the item
<b>BR</b>	The beneficiary has been informed of the purchase and rental options and has elected to rent the item

Modifier	Description
<b>BU</b>	The beneficiary has been informed of the purchase and rental options and after 30 days has not informed the supplier of his/her decision
<b>CA</b>	Procedure payable only in the inpatient setting when performed emergently on an outpatient who expires prior to admission
<b>CB</b>	Service ordered by a renal dialysis facility (RDF) physician as part of the ESRD beneficiary's dialysis benefit, is not part of the composite rate, and is separately reimbursable
<b>CC</b>	Procedure code change (use 'CC' when the procedure code submitted was changed either for administrative reasons or because an incorrect code was filed)
<b>CD</b>	AMCC test has been ordered by an ESRD facility or MCP physician that is part of the composite rate and is not separately billable
<b>CE</b>	AMCC test has been ordered by an ESRD facility or MCP physician that is a composite rate test but is beyond the normal frequency covered under the rate and is separately reimbursable based on medical necessity
<b>CF</b>	AMCC test has been ordered by an ESRD facility or MCP physician that is not part of the composite rate and is separately billable
<b>CG</b>	Policy criteria applied
<b>CH</b>	0 percent impaired, limited or restricted
<b>CI</b>	At least 1 percent but less than 20 percent impaired, limited or restricted
<b>CJ</b>	At least 20 percent but less than 40 percent impaired, limited or restricted
<b>CK</b>	At least 40 percent but less than 60 percent impaired, limited or restricted
<b>CL</b>	At least 60 percent but less than 80 percent impaired, limited or restricted
<b>CM</b>	At least 80 percent but less than 100 percent impaired, limited or restricted
<b>CN</b>	100 percent impaired, limited or restricted
<b>CO</b>	Outpatient occupational therapy services furnished in whole or in part by an occupational therapy assistant
<b>CQ</b>	Outpatient physical therapy services furnished in whole or in part by a physical therapist assistant
<b>CR</b>	Catastrophe/disaster related
<b>CS</b>	Cost-sharing waived for specified COVID-19 testing-related services that result in and order for or administration of a COVID-19 test and/or used for cost-sharing waived preventive services furnished via telehealth in rural health clinics and federally qualified health centers during the COVID-19 public health emergency

# Terminology

Terminology	Explanation
<b>Abduction</b>	Movement of the body part away from the medial line of the body.
<b>Abduction pillow or splint</b>	A medical device used to immobilize an extremity after a surgical procedure to help decrease the risk of a dislocation.
<b>Abductor</b>	Muscle that draws a body part away from the midline of the body.
<b>Abductor hallucis muscle</b>	Muscle of the great toe which draws it away from the body.
<b>Abductor muscle of hip</b>	A group of muscles in the buttock that lifts the thigh out to the side.
<b>Ablation</b>	Removal of tissue, a body part, or an organ or destruction of its function.
<b>Abrasion arthroplasty</b>	Refinishing the surfaces of a joint through a grinding process.
<b>Abscess</b>	A collection of pus in a walled off sac or pocket, caused by infection.
<b>Abscess cavity</b>	Pocket formed due to the accumulation of purulent material, pus.
<b>Accessory navicular bone</b>	An extra bone on the inner side of the foot that can cause irritation and require removal.
<b>Acetabular rim</b>	Margin of the acetabulum.
<b>Acetabulum</b>	A hollow cavity or socket within the hip bone that receives the ball at the top end of the femur, or thighbone.
<b>Achilles</b>	Tendon at the heel, or calcaneal tendon.
<b>Achilles tendon</b>	Large tendon at the back the heel that connects the muscles of the calf to the calcaneal bone, or heel; also called tendo calcaneus.
<b>Acromioclavicular joint</b>	A joint between the acromion process of the scapula, or shoulder blade, and the clavicle, or collar bone.
<b>Acromioclavicular, or AC, joint</b>	Union of the acromion, a bony projection on the shoulder blade, and the clavicle, or collar bone.
<b>Acromion</b>	A bony process, or projection, on the scapula, or shoulder blade, that extends over the joint.
<b>Acromionectomy</b>	Surgical excision of the acromion, a bony projection on scapula, or shoulder blade, that extends over the joint.
<b>Acromioplasty</b>	Surgical revision of the acromion, a bony projection on the end of the shoulder blade, to relieve compression on the rotator cuff.
<b>Acute</b>	A medical condition or injury of sudden onset, sometimes severe in nature, and typically lasts a short period of time; opposite of chronic.
<b>Adductor</b>	A muscle that helps a body part to move toward the centerline of the body or limb.
<b>Adductor aponeurosis</b>	A thin band of tissue that separates the two ends of ulnar collateral ligaments.
<b>Adductor muscle</b>	Group of muscles that pulls the body part towards the midline of the body.
<b>Adductors</b>	A group of muscles of the thigh that moves the thigh toward the midline of the body.
<b>Adductors of hip</b>	Group of muscles that moves the thigh toward the midline of the body.
<b>Adhesiolysis</b>	Freeing up adhesions by cutting and dividing, typically with a combination of sharp and blunt dissection.
<b>Adhesions</b>	Fibrous bands, which typically result from inflammation or injury during surgery, that form between tissues and organs; they may be thought of as internal scar tissue.
<b>Advance directive</b>	A document which enables a person to make provision for his health care decisions in case if in the future, he becomes unable to make those decisions; include documents such as a living will and a medical power of attorney.
<b>Algorithm</b>	A specific set of step-by-step calculations using defined inputs at each step to produce a useful output.
<b>Allograft</b>	A tissue graft harvested from one person for another; donors include cadavers and living individuals related or unrelated to the recipient; also called allogeneic graft and homograft.
<b>Alveolar bone</b>	The alveolar bone contains the tooth sockets; also called the alveolar ridge or alveolar process.
<b>Alveolar cleft</b>	Congenital defect in which a cleft, or gap, occurs in the alveolar arch, the tooth bearing portion of the jaw bone.

Terminology	Explanation
<b>Ambulatory</b>	The ability to walk or suitability for walking.
<b>Ambulatory care</b>	Medical care rendered in an outpatient setting, i.e., not requiring an overnight stay in a hospital.
<b>Amputate</b>	Removal of a limb or digit.
<b>Amputation</b>	Surgical removal of a body extremity, commonly to control pain or progression of a disease in the affected limb.
<b>Analgesic</b>	Medicines that give relief from pain.
<b>Anastomosis</b>	Connection between two structures, anatomical or surgically created, such as between two blood vessels or the colon after resection of a part; types of anastomoses include end to side and side to side.
<b>Anatomic alignment</b>	Normal position; refers primarily to skeletal structures; malalignment refers to skeletal structures that are out of their normal position.
<b>Anatomical neck humerus</b>	The portion of the humerus that separates the greater and lesser tubercles from the humeral head, or the forearm muscles.
<b>Anatomical position</b>	The position of human body taken as a reference while explaining the orientation of body parts amongst themselves, the position includes the person standing with neck and spine erect, looking in front, square shoulders, arms by the side, and palms rotated to face forwards.
<b>Anconeus</b>	A small muscle near the elbow.
<b>Anesthesia</b>	A medication induced state that reduces or eliminates sensitivity to pain, depending upon the type of anesthesia administered; general anesthesia renders the patient completely unconscious, while local or regional anesthesia reduces sensation to pain in specific areas of the body.
<b>Anesthetic</b>	Substance that reduces sensitivity to pain.
<b>Aneurysm</b>	Weakness in the wall of a blood vessel or wall of a ventricle of the heart, typically the left ventricle, causing the wall to balloon out; sometimes requiring surgical excision or repair to prevent rupture.
<b>Ankle joint</b>	Joint composed by the tibia, the fibula, and the talus.
<b>Ankylosis</b>	A condition following an injury, surgery, or infection, which leads to stiffness or fusion, or permanent fixation, of a joint.
<b>Annulus fibrosus</b>	Fibrous outer ring of the intervertebral disk, the cartilage cushion between the interlocking bones in the spine; also known as the annular ring.
<b>Anterior</b>	Closer to the front part of the body or a structure.
<b>Anterior approach</b>	Surgical approach from the front, in this case from the front of the spine.
<b>Anterior capsule</b>	The front part of the joint capsule that envelopes the elbow joint.
<b>Anterior cruciate ligament, or ACL</b>	Strong fibrous tissue that connects the upper tibia, one of the lower leg bones, to the base of the femur, or thigh bone, holding the patella, or knee cap, in place and ensuring stability of the knee joint; the ACL passes diagonally in front of the posterior cruciate ligament, or PCL.
<b>Anterior inferior iliac spine</b>	Bony projection in the front border of the hip bone.
<b>Anterior instrumentation</b>	Spinal fixation device that attaches to the front of the spine.
<b>Anterior interbody technique</b>	Spinal fusion through an anterior, or front, approach, through the neck for cervical vertebrae, the chest for thoracic vertebrae, the abdomen for lumbar vertebrae.
<b>Anterior intrusion</b>	Abnormal projection of a structure in a forward direction.
<b>Anterior superior iliac spine</b>	Front projection of the iliac crest in the hip.
<b>Anterior technique</b>	Spinal fusion from the anterior, or front, portion of the vertebrae.
<b>Anterior tibial extensors</b>	Muscle of anterior part of leg.
<b>Anteroposterior view</b>	The X-ray projection travels from front to back, abbreviated as AP.
<b>Anterosuperior iliac spine</b>	Front projection of the iliac crest in the hip.
<b>Antibiotic</b>	A substance that inhibits infection.
<b>Anticoagulant</b>	A drug that prevents clot formation within the blood vessels and dissolves any blood clot formed previously.
<b>Antiinflammatory</b>	Substance that reduces pain, swelling, and inflammation.
<b>Antimicrobial agent</b>	Substance that repels or destroys microorganisms.



# Join the biggest team in healthcare information management.

As an AAPC member, you'll be part of a global network of 250,000+ career learners and working professionals. Our credentials are among the most highly sought after in the industry – in part because AAPC members are trained for more than passing an exam. They are trained to succeed on the job from day one.

*"If you want to rise in the ranks of the Healthcare business portion of the medical field, I highly suggest that you become a member of AAPC and obtain your certifications through them. They will help you to advance and open the door of opportunity for you."*

**- Latisha Booker, CPC**

*"AAPC has not only provided me with the opportunity to earn multiple credentials but has also opened important doors for me in my career."*

**- Mary Arnold, CPC, CPMA, CRC, RMA, HR-C**

*"While taking classes, I was introduced to AAPC. I became a member to help boost my career, and more than 20 years later, I'm still an AAPC member."*

**- Bradley Miller, CPC, CRC, CDEO**

Whether you're just getting started or a seasoned pro, AAPC membership will give you the support, training, tools, and resources to help you launch and advance your career successfully,



Learn more at [aapc.com](https://aapc.com)



2026 Coders' Specialty Guide  
Orthopedics (Volumes I & II)



9 798892 581189

Print ISBN: 979-8-892581-189