



Procedural Coding

EXPERT

CPT® Codes & More for Medicare Coders



Helping our members in need

Your purchase of this book supports the AAPC Member Hardship Fund.

2025

Table of Contents

Introduction

- Features, Symbols, and Conventions3

Instructions for Using This Code Book..... 4

Anatomical Illustrations..... 5

Index 41

AMA Official Evaluation and Management (E/M) Services Guidelines..... 311

Code Chapters 325

- Evaluation and Management Services.....325
- Anesthesia.....351
- Surgery
 - Surgery/General367
 - Surgery/Integumentary System.....369
 - Surgery/Musculoskeletal System411
 - Surgery/Respiratory System553
 - Surgery/Cardiovascular System.....577
 - Surgery/Hemic and Lymphatic Systems.....643
 - Surgery/Mediastinum and Diaphragm...649
 - Surgery/Digestive System651
 - Surgery/Urinary System717
 - Surgery/Male Genital System.....743
 - Surgery/Reproductive System.....755
 - Surgery/Intersex Surgery757
 - Surgery/Female Genital System759
 - Surgery/Maternity Care and Delivery777
 - Surgery/Endocrine System.....783
 - Surgery/Nervous System787
 - Surgery/Eye and Ocular Adnexa829
 - Surgery/Auditory System.....855
 - Surgery/Operating Microscope.....863
- Radiology Procedures865
- Pathology and Laboratory Procedures.....915

- Medicine Services and Procedures.....1047
- Category II Codes1145
- Category III Codes1167
- Multianalyte Assays.....1207

Appendices

- AMA Official Appendix A: Modifiers1209
- AMA Official Appendix B: Summary of Additions, Deletions, and Revisions1217
- AMA Official Appendix C and D: Clinical Examples and Summary of CPT® Add-on Codes1227
- AMA Official Appendix E: Summary of CPT® Codes Exempt from Modifier 51....1231
- AMA Official Appendix F: Summary of CPT® Codes Exempt from Modifier 63....1233
- AMA Official Appendices G, H, and I:.....1235
- AMA Official Appendix J: Electrodiagnostic Medicine Listing of Sensory, Motor, and Mixed Nerves1237
- AMA Official Appendix K: Product Pending FDA Approval1241
- AMA Official Appendix L: Vascular Families1243
- AMA Official Appendix M: Renumbered CPT® Codes–Citations Crosswalk1255
- AMA Official Appendix N: Summary of Resequenced CPT® Codes.....1263
- AMA Official Appendix O: Multianalyte Assays with Algorithmic Analyses and Proprietary Laboratory Analyses.....1269
- AMA Official Appendix P: CPT® Codes That May Be Used for Synchronous Real-Time Interactive Audio-Video Telemedicine Services.....1325
- AMA Official Appendix Q: Severe Acute Respiratory Syndrome Coronavirus 2 (SARS-CoV-2) (coronavirus disease [COVID-19]) Vaccines1327

• AMA Official Appendix R: Digital Medicine—Services Taxonomy.....	1333	• AAPC Appendix P: Telemedicine Codes.....	1611
• AMA Official Appendix S: Artificial Intelligence Taxonomy for Medical Services and Procedures.....	1339	• AAPC Appendix Q: Anesthesia Modifiers.....	1613
• AMA Official Appendix T: CPT® Codes That May Be Used for Synchronous Real-Time Interactive Audio-Only Telemedicine Services.....	1341	• AAPC Appendix R: Digital Medicine Services.....	1615
• AAPC Appendix A: New, Revised, and Deleted Codes and Advice for 2025.....	1343	• AAPC Appendix S: Artificial Intelligence Taxonomy.....	1617
• AAPC Appendix B: Crosswalks for Deleted Codes.....	1413	• AAPC Appendix T: Synchronous Real-Time Interactive Audio Only Telemedicine Services.....	1619
• AAPC Appendix C: Inpatient-Only Procedure Codes.....	1417	• AAPC Appendix U: CPT® Modifiers, Definitions, and Tips.....	1621
• AAPC Appendix D: CPT® Category II Modifiers.....	1423	• AAPC Appendix V: Evaluation and Management (E/M) Audit Worksheet.....	1633
• AAPC Appendix E: HCPCS Level II Modifiers, Definitions, and Tips.....	1425		
• AAPC Appendix F: Resequenced CPT® Codes.....	1521		
• AAPC Appendix G: Vascular Families for Interventional Radiology Coding.....	1525		
• AAPC Appendix H: Modifier 51 Exempt, Modifier 63 Exempt, and Add-On Codes.....	1531		
• AAPC Appendix I: Trade Name and Generic Vaccinations Associated With CPT® Codes....	1535		
• AAPC Appendix J: Place of Service/Type of Service.....	1541		
• AAPC Appendix K: Drug Class List.....	1545		
• AAPC Appendix L: APC Status Indicators.....	1571		
• AAPC Appendix M: ASC Payment Indicators.....	1573		
• AAPC Appendix N: Electrodiagnostic Medicine Listing of Sensory, Motor, and Mixed Nerves.....	1575		
• AAPC Appendix O: Multianalyte Assays With Algorithmic Analyses and Proprietary Laboratory Analyses.....	1579		

Instructions for Using This Code Book

Index Format

You will find the index at the front of this code book, which contains procedures and services and their corresponding CPT® codes. The index arranges main terms alphabetically by procedure, service, body site, abbreviation, synonym, eponym, and some conditions. Main terms are listed in bold. Subterms, which modify main terms, are indented underneath main terms. You may also find additional modifying subterms indented under other subterms.

Each main term can stand alone or have modifying subterms. There are four types of main terms that you will find in the index:

1. **Procedure or service**
Examples: repair, anesthesia, endoscopy
2. **Organ or anatomic site**
Examples: acetabulum, fibula, tibia
3. **Condition or diagnosis**
Examples: tumor, abscess, tetralogy of Fallot
4. **Abbreviations, synonyms, eponyms**
Examples: CT scan, CPK, EEG, phalanx, Frickman proctopexy

You may find a code in the index many different ways. If you search under the procedure as the main term but don't find a code, then search for the body site instead. If you search for an abbreviation, such as EGD, and don't find a code, then search for the complete term, such as esophagogastroduodenoscopy.

Before searching for a main term in the index, find the procedure or service in the patient's medical documentation. Then search for the main term that best describes the procedure or service, anatomic site, condition, abbreviation, synonym, or eponym. Also review any subterms that modify main terms to find the correct code.

Code Options

When you find codes in the index, you will see the following choices:

- **One code** – cross-reference the code to the code chapter
- **Multiple codes separated by commas** – cross-reference each code to the code chapters
- **Code range(s) separated by a hyphen** – cross-reference each code in the range to the code chapters
- **Multiple codes separated by commas and a code range(s) separated by a hyphen** – cross-reference each code separated by a comma and each code in the code range to the code chapters

“See” Cross-Reference

You may also find the cross-reference “See” followed by one or more main terms. This cross-reference means that you are in the wrong place to find the procedure you are searching for, and you must look elsewhere.

For example, if you search for the main term and subterm Abortion, Spontaneous, Complete, you will not find a code. Instead, you find the cross-reference to See Hospital Services.

“See Also” Cross-Reference

You may also find the cross-reference “See Also” followed by one or more main terms. The “See Also” cross-reference means that you can also check the alternate main terms listed to find the service or procedure code.

Code Chapters/Sections

This code book contains the following chapters, or sections, where you will cross-reference all of the Category I CPT® codes that you find in the index. These five-digit codes are arranged in numeric order, starting with zero, except for the first chapter, which contains Evaluation and Management codes, which start with 9:

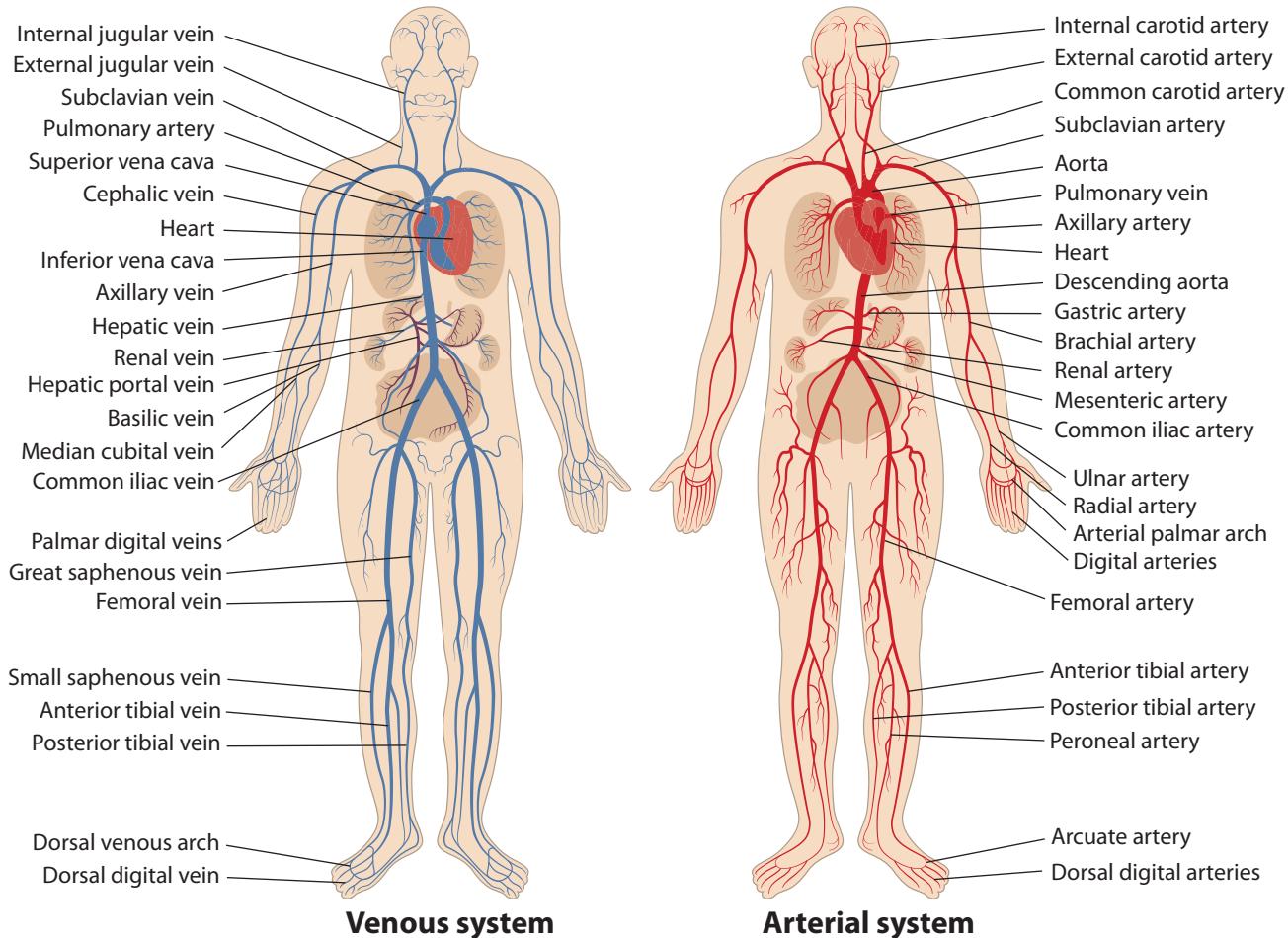
- **Evaluation and Management**
- **Anesthesia**
- **Surgery**
- **Radiology**
- **Pathology and Laboratory**
- **Medicine**

The book also contains these additional codes:

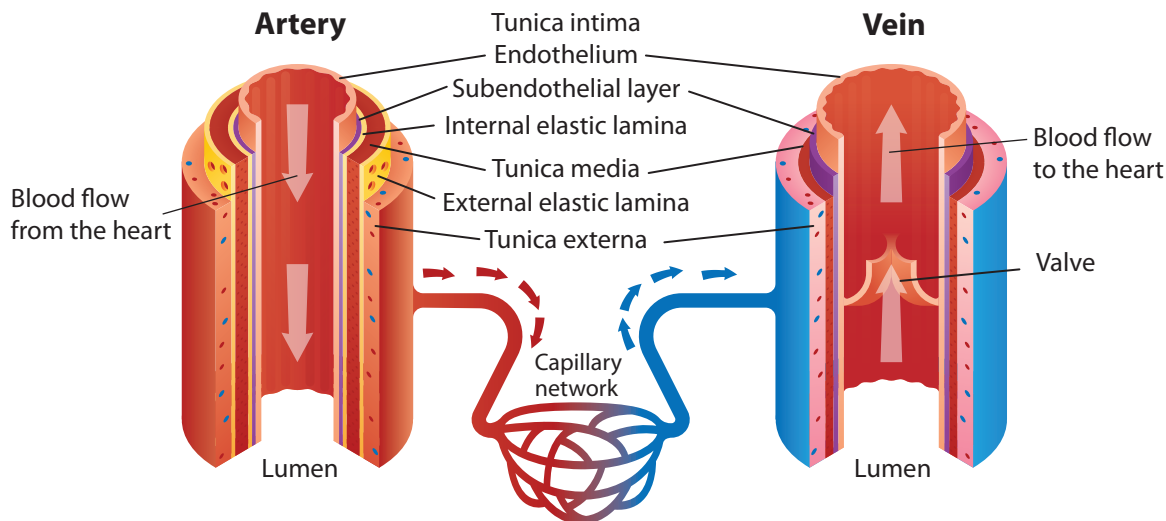
- **Category II** – used for statistics and tracking; four digits ending with F
- **Category III** – used for new and experimental technology; four digits ending with T
- **Multianalyte Assays** – used for multianalyte tests; four digits ending with M
- **Proprietary Laboratory Analyses** – used for pathology and laboratory proprietary lab services; four digits ending with U

Anatomical Illustrations

Circulatory System — Arteries and Veins

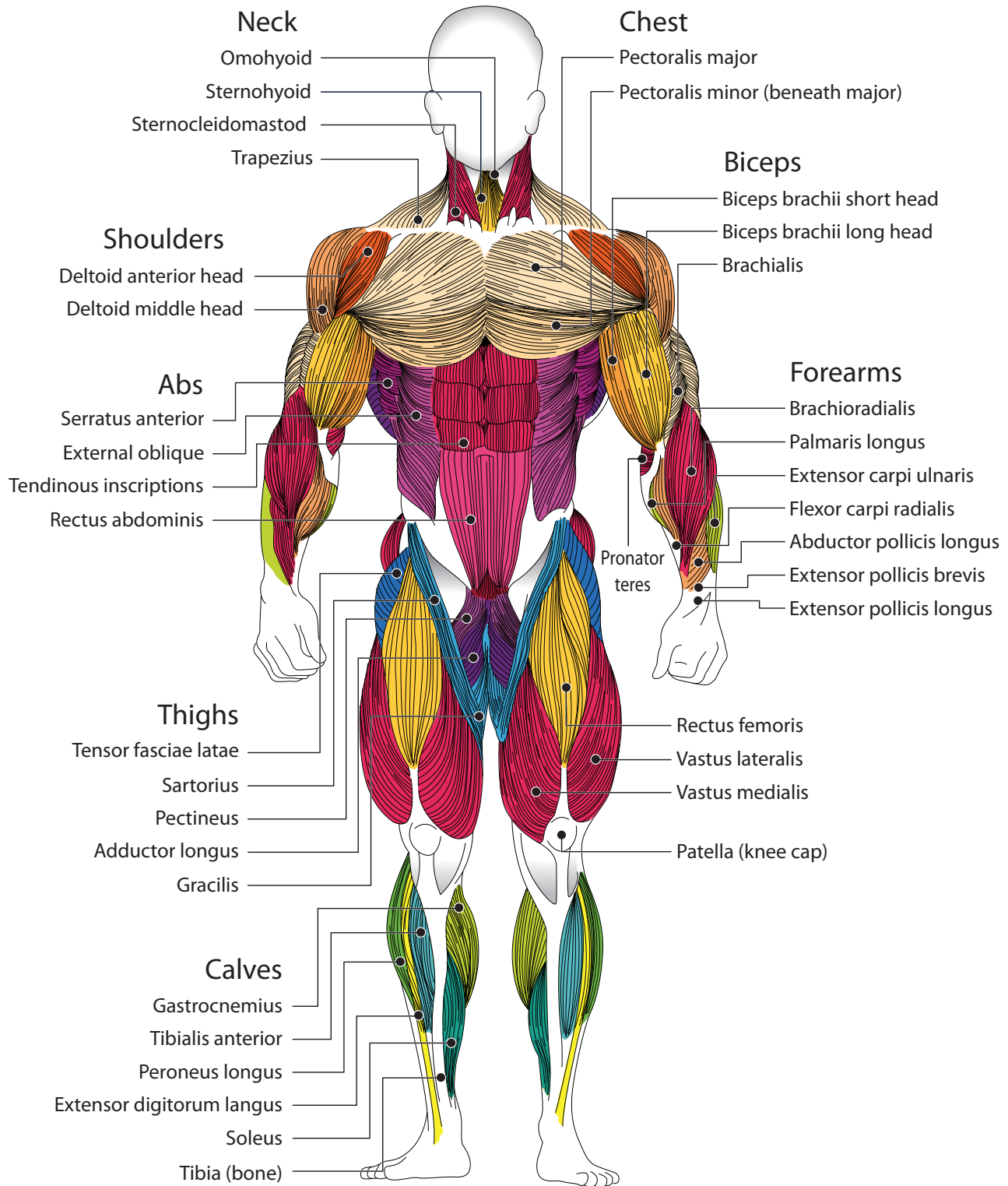


Circulatory System — Artery and Vein Anatomy



Musculoskeletal System — Musculature Anatomy

FRONT VIEW



Index

A

A (Vitamin A) 84590

A-II (Angiotensin II) 82163

Ab Externo Trabeculectomy (AET) 65850

Ab Interno Trabeculectomy 0621T, 0622T

Abbe-Estlander Reconstruction Procedure

- Lip Excision 40527
- Plastic Repair With Sectioning and Inserting Pedicle 40761

Abbott Alinity™ STI Assay 0402U

Abdomen or Abdominal

- Abscess Incision and Drainage
 - Peritoneal 49020
 - Retroperitoneal 49060
 - Subphrenic 49040
- Anesthesia, **See** Anesthesia, Abdomen
- Angiography
 - CT With Contrast Material 74174, 74175, 75635
 - Magnetic Resonance (MRA) 74185
- Aorta
 - Angiography 75635
 - Aortography 75625, 75630
 - Endovascular Repair 33894, 33895
 - Thromboendarterectomy 35331
- Aortic Aneurysm
 - Endovascular 34701-34708
 - Device Placement 34808
 - Open Repair 34832, 34841-34848, 35081-35103
 - Prosthesis or Graft 34813, 34820, 34709-34711
 - Exposure 34812
 - Infrarenal Repair 34830, 34831, 34832
 - Open Exposure 34833, 34834
 - Screening Ultrasound 76706
- Biopsy During Exploratory Laparotomy 49000
- Blood Vessel Repair
 - Direct 35221
 - With Graft 35281
 - With Vein Graft 35251
- Bypass Graft Removal (Infected) 35907
- Catheter (Tunneled) Removal 49422
- Celiotomy, **See** Laparotomy
- Cesarean Section Delivery
 - Delivery Only 59514, 59620
 - Delivery With Postpartum Care 59515, 59622
 - Routine Obstetric Care 59510, 59618
 - With Hysterectomy 59525
 - With Tubal Ligation 58611
- CT Scan
 - With Contrast 74160, 74174, 74175, 74177, 75635
 - Without Contrast 74150, 74170, 74176, 74178

Drainage

- Paracentesis
 - With Imaging Guidance 49083
 - Without Imaging Guidance 49082
- Peripancreatic 48000
- Skin and Subcutaneous Tissue 10060, 10061
- Ectopic Pregnancy, Surgical Treatment 59130
- Excision/Destruction
 - Cyst
 - 5 cm Diameter or Less 49203
 - 5.1-10.0 cm Diameter 49204
 - Greater Than 10.0 cm Diameter 49205
 - Endometrioma 49203, 49204, 49205
- Tumor
 - Intraabdominal
 - 5 cm or Less 49203
 - 5.1-10.0 cm Diameter 49204
 - Greater Than 10.0 cm 49205
 - Radical Resection
 - 5 cm and Greater 22905
 - Less Than 5 cm 22904
 - Subcutaneous (Abdominal Wall)
 - 3 cm and Greater 22903
 - Less Than 3 cm 22902
 - Subfascial (Abdominal Wall)
 - 5 cm and Greater 22901
 - Less Than 5 cm 22900
- Exploration
 - Post-operative Hemorrhage 35840
 - Preperitoneal Pelvic Packing 49013, 49014
 - Reopening of Recent Laparotomy 49010
 - Staging/Restaging 58960
 - With or Without Biopsy 49000
- Fascia Reinforcement With Nonbiologic or Synthetic Implant 0437T
- Hernia Repair
 - Epigastric 49591-49596, 49613-49618
 - Inguinal
 - 5 Years or Older 49505, 49507, 49520, 49521, 49525
 - Laparoscopic 49650, 49651
 - 6 Months to Less Than 5 Years 49500, 49501
 - Less Than 6 Months of Age 49491, 49492, 49495, 49496
 - Omphalocele 49600, 49605, 49606, 49610, 49611
 - Removal, Mesh or Prosthesis 49623
 - Spigelian 49591-49596, 49613-49618
 - Umbilical 49591-49596, 49613-49618
 - Ventral or Incisional 49591-49596, 49613-49618
- Hysterectomy (With or Without Salpingo-oophorectomy)
 - Radical 58210
 - Supracervical 58180
 - Total (TAH) 58150
 - Colpourethrocystopexy 58152
 - Omentectomy 58956
 - Partial Vaginectomy 58200

- With Resection of Ovarian Malignancy 58951, 58953, 58954, 58956
- Implantation, Mesh or Prosthesis 15778, 49591-49596, 49613-49618
- Incision Procedures, **See Also** Laparotomy
- Drainage 49020, 49040, 49060, 49062
- Exploration 49000, 49010
- Paracentesis 49082, 49083
- Peritoneal Lavage 49084
- Reopening, Recent 49002
- With or Without Omentectomy 58960
- Injection, Air or Contrast Material 49400
- Intraperitoneal
 - Tunneled Catheter
 - Exit Site 49436
 - Insertion 49418, 49419, 49421, 49435
 - Removal 49422
 - Revision 49325
 - Venous Shunt
 - Insertion 49425
 - Ligation 49428
 - Removal 49429
 - Revision 49426
- Laparoscopy
 - Surgical 49321, 49322, 49323, 49324, 49325, 49326, 49327
 - Unlisted Procedure 49329
 - Without Treatment 49320
- Laparotomy, **See Also** Exploratory Laparotomy, Abdomen
 - Reopening, Recent 49002
 - Staging 58960
- Ligation, Artery 37617
- Lymphangiogram/Lymphangiography 75805, 75807
- Injection 38790
- Magnetic Resonance Imaging (MRI)
 - With Contrast Material 74182
 - Without Contrast Material 74181
 - Followed With Contrast Material 74183
- Needle Biopsy (Percutaneous) 49180
- Nonbiologic or Synthetic Implant 0437T
- Panniculectomy, Infraumbilical 15830
- Paracentesis
 - With Imaging Guidance 49083
 - Without Imaging Guidance 49082
- Pelvic Exenteration (Radical Resection) 51597
- Peritoneal Venous Shunt Revision 49426
- Radiation Therapy Guidance Device
 - Placement 49411, 49412
- Radiography/Imaging
 - CT 74150-74178
 - MRI 74181, 74182, 74183, 74185
 - Peritoneogram 74190
 - Ultrasound 76700, 76705
 - X-ray 74018-74022
- Removal, Mesh/Prosthetic Material +11008, 49623
- Suture, Secondary 49900
- Ultrasound
 - Complete 76700
 - Limited 76705
 - Unlisted Procedure 49999

Removal
 Percutaneous Array 63661
 Plate or Paddle(s) 63662
 Revision 63663, 63664

Stoma
 Evaluation 49465
 Foreign Body Removal (FBR) 49460

Thrombectomy, Percutaneous
 Arterial
 Primary 37184, 37185
 Secondary 37186
 Venous 37187
 Repeat 37188

Transnephric Ureteral Stent Removal,
 Externally Accessible 50387

Vena Cava Filter, Endovascular
 Insertion 37191
 Repositioning 37192
 Retrieval 37193

Venous Access Device
 Evaluation 36598
 Replacement 77001
 Unlisted Service or Procedure 76496

FNA (Fine Needle Aspiration) Biopsy
 With CT Guidance 10009-10010
 With Fluoroscopic Guidance 10007+10008
 With MR Guidance 10011-10012
 With US Guidance 10005-10006
 Without Imaging Guidance 10004, 10021

Foam Test (Fetal Lung Maturity) 83662

Focused Pharmacogenomics Panel 0029U

Fold, Vocal
 Endoscopic Injection 31513
 Therapeutic 31570, 31571

Foley Y-pyeloplasty
 Complicated 50405
 Simple 50400

Folic Acid (B Vitamin)
 Blood 82746
 Red Blood Cells (RBC) 82747

Follicle Stimulating Hormone (FSH) (Follitropin) 83001
 Combined Panel 80418, 80426

Folliculin (Estrone) 82679

Follow-up
 Inpatient or Observation Consultations
 99252, 99253, 99254, 99255
 Post-operative 99024
 Services, **See** Hospital Services; Office
 and/or Other Outpatient Services

Fontan Procedure (Cardiac Anomalies)
 Modified 33617
 Simple 33615

Food Allergy
 Allergen-specific Immunoglobulin E (IgE)
 Qualitative 86005
 Quantitative 86003, 86008
 Challenge Test 95076
 Each Additional 60 Minutes 95079
 Peanut Epitope Immunoassay 0165U,
 0178U

Foot, See Also Metatarsal; Tarsal; Talotarsal Joint; Tarsal Bone/Joint; Tarsometatarsal Joint

Abscess (Incision), Bone 28005

Amputation
 Midtarsal 28800
 Transmetatarsal 28805

Bursa (Infected), Incision and Drainage
 28001

Capsulotomy
 Extensive 28262
 Heyman Type, Midtarsal 28264
 Medial Release Only 28260
 With Tendon Lengthening 28261

Casting/Strapping
 Clubfoot Cast, Long or Short 29450
 Compression System
 Below Knee 29581
 Strapping (Adhesive) 29540
 Unna Boot (Cotton/Paste) 29580

Cleft Foot Reconstruction 28360

Clubfoot
 Cast Wedging 29750
 Casting 29450
 Repair 28262

Fasciectomy, Plantar
 Partial 28060
 Radical 28062

Fasciotomy 28008
 Endoscopic 29893

Incision
 Bone Cortex 28005
 Bursal Space 28002
 Multiple 28003

Joint
 Capsulotomy
 Midfoot
 Extensive 28262
 Medial Release Only 28260
 With Tendon Lengthening 28261
 Midtarsal 28264
 Drainage, Exploration, Foreign Body
 Removal
 Interphalangeal 28024
 Intertarsal or Tarsometatarsal 28020
 Metatarsophalangeal 28022
 MRI 73721, 73722, 73723
 Synovectomy
 Intertarsal or Tarsometatarsal 28070
 Metatarsophalangeal 28072

Lesion Excision
 Cyst or Ganglion 28090
 Morton's Neuroma 28080

Nerve
 Destruction (Neurolytic) 64632
 Excision (Neurectomy) 28055
 Grafting
 More Than 4 cm Length 64891, 64896
 Up to 4 cm Length 64890, 64895
 Incision (Tarsal Tunnel Release) 28035
 Neuroma
 Excision 64782, 64783
 Injection, Steroid or Anesthetic 64455
 Interdigital, Morton's
 Destruction 64632
 Excision 28080
 Injection 64455
 Neuroplasty, One or Both 64702
 Suture Repair

Common Sensory 64834
 Digital 64831
 Each Additional 64832
 Each Additional Nerve 64837
 Median, Motor Thenar 64835
 Ulnar, Motor 64836

Removal/Excision
 Foreign Body
 Complicated 28193
 Deep 28192
 Subcutaneous 28190
 Muscle 28250
 Tendon 28200-28230, 28234, 28238

Replantation (Reattachment), Complete
 Amputation 20838

Sesamoid Bone Excision 28315

Skin Grafting
 Autograft
 Dermal 15135
 Additional 100 sq cm +15136
 Epidermal 15115
 Additional 100 sq cm 15116
 Preparation of Recipient Site 15004
 Additional 100 sq cm +15005
 Skin Substitute Application 15275,
 +15276, 15277, 15278
 Split-thickness 15120
 Additional 100 sq cm +15121
 Tissue-cultured Autograft 15155
 Additional 1 sq cm to 75 sq cm 15156
 Additional 100 sq cm 15157

Tendon
 Extensor
 Repair
 Primary or Secondary 28208
 Secondary With Free Graft 28210
 Tenolysis
 Multiple 28226
 Single 28225
 Tenotomy, Each Tendon 28234

Flexor
 Repair
 Primary or Secondary 28200
 Secondary With Free Graft 28202
 Tenolysis
 Multiple 28222
 Single 28220
 Tenotomy
 Single 28232
 Single or Multiple 28230
 Lengthening With Capsulotomy 28261,
 28262
 Lesion Excision (Cyst or Ganglion) 28090
 Synovectomy
 Extensor 28086
 Flexor 28080
 Tendon Sheath 28090

Tenotomy
 Extensor 28234
 Flexor 28230
 Toe 28010
 Multiple 28011

Transfer
 Deep 27691
 Each Additional 27692
 Superficial 27690

Tissue Transfer
 Adjacent
 Defect 10 sq cm or Less 14040

Evaluation and Management Services

Evaluation and Management (99202-99499)

Office or Other Outpatient Services (99202-99215)

New Patient (99202-99205)

99202



Office or other outpatient visit for the evaluation and management of a new patient, which requires a medically appropriate history and/or examination and straightforward medical decision making. When using total time on the date of the encounter for code selection, 15 minutes must be met or exceeded.

MIPS

FRVU 1.42 NFRVU 2.15 GLOBAL XXX MUE 1

MOD 25, 27, 32, 33, 57, 80, 81, 82, 93, 95, 99, AF, AG, AK, AQ, AS, CR, CS, EP, ET, FP, FR, FS, FT, GO, GA, GC, GE, GF, GJ, GQ, GR, GT, GV, GW, HA, HB, HC, HD, HU, KX, PD, QO, Q1, Q5, Q6, QJ, SA, TH, XE, XP, XS, XU

CPT® Asst: JAN 2022; Vol 32: Issue 1, JAN 2022; Vol 32: Issue 1, JUN 2022; Vol 32: Issue 6, JUL 2022; Vol 32: Issue 7, DEC 2020; Vol 30: Issue 12, JUN 2021; Vol 31: Issue 6, SEP 2021; Vol 31: Issue 9, SEP 2021; Vol 31: Issue 11, JAN 2020; Vol 30: Issue 1, FEB 2020; Vol 30: Issue 2, MAR 2020; Vol 30: Issue 3, MAR 2020; Vol 30: Issue 3, MAY 2020; Vol 30: Issue 5, JUN 2020; Vol 30: Issue 6, SEP 2020; Vol 30: Issue 9, SEP 2020; Vol 30: Issue 9, OCT 2020; Vol 30: Issue 10, OCT 2020; Vol 30: Issue 10, NOV 2020; Vol 30: Issue 11, JAN 2019; Vol 29: Issue 1, FEB 2019; Vol 29: Issue 2, OCT 2019; Vol 29: Issue 10, MAR 2018; Vol 28: Issue 3, APR 2018; Vol 28: Issue 4, APR 2018; Vol 28: Issue 4, SEP 2018; Vol 28: Issue 9, JUN 2017; Vol 27: Issue 6, AUG 2017; Vol 27: Issue 8, JAN 2016; Vol 26: Issue 1, MAR 2016; Vol 26: Issue 3, SEP 2016; Vol 26: Issue 9, NOV 2014; Vol 24: Issue 11, JAN 2015; Vol 25: Issue 1, OCT 2015; Vol 25: Issue 10, DEC 2015; Vol 25: Issue 12, AUG 2014; Vol 24: Issue 8, OCT 2014; Vol 24: Issue 10, OCT 2014; Vol 24: Issue 10, AUG 2013; Vol 23: Issue 8, AUG 2013; Vol 23: Issue 8, JAN 2012; Vol 22: Issue 1, FEB 2011; Vol 21: Issue 2, JUN 2011; Vol 21: Issue 6, MAR 2009; Vol 19: Issue 3, AUG 2009; Vol 19: Issue 8, DEC 2009; Vol 19: Issue 12, NOV 2008; Vol 18: Issue 11, APR 2007; Vol 17: Issue 4, SEP 2007; Vol 17: Issue 9, MAY 2006; Vol 16: Issue 5, JUN 2006; Vol 16: Issue 6, OCT 2006; Vol 16: Issue 10, APR 2005; Vol 15: Issue 4, JUN 2005; Vol 15: Issue 6, AUG 2004; Vol 14: Issue 8, FEB 2000; Vol 10: Issue 2

99203



Office or other outpatient visit for the evaluation and management of a new patient, which requires a medically appropriate history and/or examination and low level of medical decision making. When using total time on the date of the encounter for code selection, 30 minutes must be met or exceeded.

MIPS

FRVU 2.45 NFRVU 3.33 GLOBAL XXX MUE 1

MOD 25, 27, 32, 33, 57, 80, 81, 82, 93, 95, 99, AF, AG, AK, AQ, AS, CR, CS, EP, ET, FP, FR, FS, FT, GO, GA, GC, GE, GF, GJ, GQ, GR, GT, GV, GW, HA, HB, HC, HD, HU, KX, PD, QO, Q1, Q5, Q6, QJ, SA, TH, XE, XP, XS, XU

CPT® Asst: JAN 2022; Vol 32: Issue 1, JAN 2022; Vol 32: Issue 1, JUN 2021; Vol 31: Issue 6, SEP 2021; Vol 31: Issue 9, SEP 2021; Vol 31: Issue 9, NOV 2021; Vol 31: Issue 11, FEB 2020; Vol 30: Issue 2, MAR 2020; Vol 30: Issue 3, MAR 2020; Vol 30: Issue 3, MAY 2020; Vol 30: Issue 5, JUN 2020; Vol 30: Issue 6, SEP 2020; Vol 30: Issue 9, SEP 2020; Vol 30: Issue 9, OCT 2020; Vol 30: Issue 10, OCT 2020; Vol 30:

Issue 10, NOV 2020; Vol 30: Issue 11, JAN 2019; Vol 29: Issue 1, FEB 2019; Vol 29: Issue 2, OCT 2019; Vol 29: Issue 10, MAR 2018; Vol 28: Issue 3, APR 2018; Vol 28: Issue 4, APR 2018; Vol 28: Issue 4, SEP 2018; Vol 28: Issue 9, JUN 2017; Vol 27: Issue 6, AUG 2017; Vol 27: Issue 8, JAN 2016; Vol 26: Issue 1, MAR 2016; Vol 26: Issue 3, SEP 2016; Vol 26: Issue 9, NOV 2014; Vol 24: Issue 11, JAN 2015; Vol 25: Issue 1, OCT 2015; Vol 25: Issue 10, DEC 2015; Vol 25: Issue 12, AUG 2014; Vol 24: Issue 8, OCT 2014; Vol 24: Issue 10, OCT 2014; Vol 24: Issue 10, AUG 2013; Vol 23: Issue 8, AUG 2013; Vol 23: Issue 8, JAN 2012; Vol 22: Issue 1, FEB 2011; Vol 21: Issue 2, JUN 2011; Vol 21: Issue 6, MAR 2009; Vol 19: Issue 3, AUG 2009; Vol 19: Issue 8, DEC 2009; Vol 19: Issue 12, NOV 2008; Vol 18: Issue 11, APR 2007; Vol 17: Issue 4, SEP 2007; Vol 17: Issue 9, MAY 2006; Vol 16: Issue 5, JUN 2006; Vol 16: Issue 6, OCT 2006; Vol 16: Issue 10, FEB 2005; Vol 15: Issue 2, APR 2005; Vol 15: Issue 4, JUN 2005; Vol 15: Issue 6, AUG 2004; Vol 14: Issue 8, FEB 2000; Vol 10: Issue 2

99204



Office or other outpatient visit for the evaluation and management of a new patient, which requires a medically appropriate history and/or examination and moderate level of medical decision making. When using total time on the date of the encounter for code selection, 45 minutes must be met or exceeded.

MIPS

FRVU 3.94 NFRVU 4.94 GLOBAL XXX MUE 1

MOD 25, 27, 32, 33, 57, 80, 81, 82, 93, 95, 99, AF, AG, AK, AQ, AS, CR, CS, EP, ET, FP, FR, FS, FT, GO, GA, GC, GE, GF, GJ, GQ, GR, GT, GV, GW, HA, HB, HC, HD, HU, KX, PD, QO, Q1, Q5, Q6, QJ, SA, TH, XE, XP, XS, XU

CPT® Asst: JAN 2022; Vol 32: Issue 1, JAN 2022; Vol 32: Issue 1, JUN 2021; Vol 31: Issue 6, SEP 2021; Vol 31: Issue 9, SEP 2021; Vol 31: Issue 9, NOV 2021; Vol 31: Issue 11, FEB 2020; Vol 30: Issue 2, MAR 2020; Vol 30: Issue 3, MAR 2020; Vol 30: Issue 3, MAY 2020; Vol 30: Issue 5, JUN 2020; Vol 30: Issue 6, SEP 2020; Vol 30: Issue 9, SEP 2020; Vol 30: Issue 9, OCT 2020; Vol 30: Issue 10, OCT 2020; Vol 30: Issue 10, NOV 2020; Vol 30: Issue 11, NOV 2020; Vol 30: Issue 11, NOV 2020; Vol 30: Issue 11, JAN 2019; Vol 29: Issue 1, FEB 2019; Vol 29: Issue 2, OCT 2019; Vol 29: Issue 10, MAR 2018; Vol 28: Issue 3, APR 2018; Vol 28: Issue 4, APR 2018; Vol 28: Issue 4, SEP 2018; Vol 28: Issue 9, JUN 2017; Vol 27: Issue 6, AUG 2017; Vol 27: Issue 8, JAN 2016; Vol 26: Issue 1, MAR 2016; Vol 26: Issue 3, SEP 2016; Vol 26: Issue 9, NOV 2014; Vol 24: Issue 11, JAN 2015; Vol 25: Issue 1, OCT 2015; Vol 25: Issue 10, DEC 2015; Vol 25: Issue 12, AUG 2014; Vol 24: Issue 8, OCT 2014; Vol 24: Issue 10, OCT 2014; Vol 24: Issue 10, AUG 2013; Vol 23: Issue 8, AUG 2013; Vol 23: Issue 8, JAN 2012; Vol 22: Issue 1, FEB 2011; Vol 21: Issue 2, JUN 2011; Vol 21: Issue 6, MAR 2009; Vol 19: Issue 3, AUG 2009; Vol 19: Issue 8, DEC 2009; Vol 19: Issue 12, APR 2007; Vol 17: Issue 4, SEP 2007; Vol 17: Issue 9, MAY 2006; Vol 16: Issue 5, JUN 2006; Vol 16: Issue 6, OCT 2006; Vol 16: Issue 10, APR 2005; Vol 15: Issue 4, JUN 2005; Vol 15: Issue 6, AUG 2004; Vol 14: Issue 8, FEB 2000; Vol 10: Issue 2

99205



Office or other outpatient visit for the evaluation and management of a new patient, which requires a medically appropriate history and/or examination and high level of medical decision making. When using total time on the date of the encounter for code selection, 60 minutes must be met or exceeded.

MIPS

FRVU 5.35 NFRVU 6.52 GLOBAL XXX MUE 1

MOD 25, 27, 32, 33, 57, 80, 81, 82, 93, 95, 99, AF, AG, AK, AQ, AS, CR, CS, EP, ET, FP, FR, FS, FT, GO, GA, GC, GE, GF, GJ, GQ, GR, GT, GV, GW, HA, HB, HC, HD, HU, KX, PD, QO, Q1, Q5, Q6, QJ, SA, TH,

GLOBAL Global Days MUE Medically Unlikely Edit MOD Modifier Crosswalk APC APC Value ASC PI ASC Payment Indicator

APC SI APC Status Indicator ASC Sep. Pay ASC Separate Payment CPT Asst CPT® Assistant Article Reference

HCPCS CODE DOSAGE Dosage Amount for Drug PAYMENT LIMIT Maximum Reimbursement Amount

Vol 19: Issue 7, AUG 2009; Vol 19: Issue 8, OCT 2006; Vol 16: Issue 10, AUG 2005; Vol 15: Issue 8, MAY 2002; Vol 12: Issue 5

99386 Initial comprehensive preventive medicine evaluation and management of an individual including an age and gender appropriate history, examination, counseling/anticipatory guidance/risk factor reduction interventions, and the ordering of laboratory/diagnostic procedures, new patient; 40-64 years MIPS

G Code Crosswalk G0101, G0102, G0402, G0438, G0439

FRVU 3.37 **NFRVU** 4.41 **GLOBAL XXX** **MUE** 0

MOD 25, 33, 99, AF, AG, AK, CR, ET, FP, FS, FT, GA, GC, GE, GJ, GR, GY, GZ, HB, HC, KX, Q5, Q6, QJ, SA, XE, XP, XS, XU

CPT® Asst: NOV 2021; Vol 31: Issue 11, MAR 2016; Vol 26: Issue 3, JAN 2015; Vol 25: Issue 1, OCT 2014; Vol 24: Issue 10, JUL 2009; Vol 19: Issue 7, AUG 2009; Vol 19: Issue 8, OCT 2006; Vol 16: Issue 10, AUG 2005; Vol 15: Issue 8, MAY 2002; Vol 12: Issue 5

99387 Initial comprehensive preventive medicine evaluation and management of an individual including an age and gender appropriate history, examination, counseling/anticipatory guidance/risk factor reduction interventions, and the ordering of laboratory/diagnostic procedures, new patient; 65 years and older MIPS

G Code Crosswalk G0101, G0102, G0402, G0438, G0439

FRVU 3.63 **NFRVU** 4.80 **GLOBAL XXX** **MUE** 0

MOD 25, 33, 99, AF, AG, AK, CR, ET, FS, FT, GA, GC, GE, GJ, GR, GY, GZ, HB, HC, KX, Q5, Q6, QJ, SA, XE, XP, XS, XU

CPT® Asst: NOV 2021; Vol 31: Issue 11, MAR 2016; Vol 26: Issue 3, OCT 2014; Vol 24: Issue 10, FEB 2012; Vol 22: Issue 2, JUL 2009; Vol 19: Issue 7, AUG 2009; Vol 19: Issue 8, OCT 2006; Vol 16: Issue 10, AUG 2005; Vol 15: Issue 8, MAY 2002; Vol 12: Issue 5

Established Patient (99391-99397)

99391 Periodic comprehensive preventive medicine reevaluation and management of an individual including an age and gender appropriate history, examination, counseling/anticipatory guidance/risk factor reduction interventions, and the ordering of laboratory/diagnostic procedures, established patient; infant (age younger than 1 year) MIPS

FRVU 1.98 **NFRVU** 2.90 **GLOBAL XXX** **MUE** 0

MOD 24, 25, 33, 99, AF, AG, AK, CR, EP, ET, FS, FT, GA, GC, GE, GJ, GR, GY, GZ, HA, HC, HU, KX, Q5, Q6, QJ, XE, XP, XS, XU

CPT® Asst: NOV 2021; Vol 31: Issue 11, MAR 2016; Vol 26: Issue 3, OCT 2014; Vol 24: Issue 10, MAR 2009; Vol 19: Issue 3, JUL 2009; Vol 19: Issue 7, AUG 2009; Vol 19: Issue 8, OCT 2006; Vol 16: Issue 10, MAY 2005; Vol 15: Issue 5, AUG 2005; Vol 15: Issue 8, MAY 2002; Vol 12: Issue 5

99392 Periodic comprehensive preventive medicine reevaluation and management of an individual including an age and gender appropriate history, examination, counseling/anticipatory guidance/risk factor reduction interventions, and the ordering of laboratory/diagnostic procedures, established patient; early childhood (age 1 through 4 years) MIPS

FRVU 2.18 **NFRVU** 3.10 **GLOBAL XXX** **MUE** 0

MOD 24, 25, 33, 99, AF, AG, AK, CR, EP, ET, FS, FT, GA, GC, GE, GJ, GR, GY, GZ, HA, HC, HU, KX, Q5, Q6, QJ, XE, XP, XS, XU

CPT® Asst: NOV 2021; Vol 31: Issue 11, MAR 2016; Vol 26: Issue 3, OCT 2014; Vol 24: Issue 10, JUL 2009; Vol 19: Issue 7, AUG 2009; Vol 19: Issue 8, OCT 2006; Vol 16: Issue 10, AUG 2005; Vol 15:

Issue 8, MAY 2002; Vol 12: Issue 5

99393 Periodic comprehensive preventive medicine reevaluation and management of an individual including an age and gender appropriate history, examination, counseling/anticipatory guidance/risk factor reduction interventions, and the ordering of laboratory/diagnostic procedures, established patient; late childhood (age 5 through 11 years) MIPS

FRVU 2.18 **NFRVU** 3.09 **GLOBAL XXX** **MUE** 0

MOD 24, 25, 33, 99, AF, AG, AK, CR, EP, ET, FS, FT, GA, GC, GE, GJ, GR, GY, GZ, HA, HC, HU, KX, Q5, Q6, QJ, XE, XP, XS, XU

CPT® Asst: NOV 2021; Vol 31: Issue 11, MAR 2016; Vol 26: Issue 3, OCT 2014; Vol 24: Issue 10, JUL 2009; Vol 19: Issue 7, AUG 2009; Vol 19: Issue 8, OCT 2006; Vol 16: Issue 10, AUG 2005; Vol 15: Issue 8, MAY 2002; Vol 12: Issue 5

99394 Periodic comprehensive preventive medicine reevaluation and management of an individual including an age and gender appropriate history, examination, counseling/anticipatory guidance/risk factor reduction interventions, and the ordering of laboratory/diagnostic procedures, established patient; adolescent (age 12 through 17 years) MIPS

G Code Crosswalk G0101, G0102

FRVU 2.46 **NFRVU** 3.37 **GLOBAL XXX** **MUE** 0

MOD 24, 25, 33, 99, AF, AG, AK, CR, EP, ET, FP, FS, FT, GA, GC, GE, GJ, GR, GY, GZ, HA, HC, HU, KX, Q5, Q6, QJ, SA, XE, XP, XS, XU

CPT® Asst: NOV 2021; Vol 31: Issue 11, MAR 2016; Vol 26: Issue 3, JAN 2015; Vol 25: Issue 1, OCT 2014; Vol 24: Issue 10, JUL 2009; Vol 19: Issue 7, AUG 2009; Vol 19: Issue 8, OCT 2006; Vol 16: Issue 10, AUG 2005; Vol 15: Issue 8, MAY 2002; Vol 12: Issue 5

99395 Periodic comprehensive preventive medicine reevaluation and management of an individual including an age and gender appropriate history, examination, counseling/anticipatory guidance/risk factor reduction interventions, and the ordering of laboratory/diagnostic procedures, established patient; 18-39 years MIPS

G Code Crosswalk G0101, G0102, G0402, G0438, G0439

FRVU 2.54 **NFRVU** 3.45 **GLOBAL XXX** **MUE** 0

MOD 24, 25, 33, 99, AF, AG, AK, CR, ET, FP, FS, FT, GA, GC, GE, GJ, GR, GY, GZ, HB, HC, KX, Q5, Q6, QJ, SA, XE, XP, XS, XU

CPT® Asst: NOV 2021; Vol 31: Issue 11, MAR 2016; Vol 26: Issue 3, JAN 2015; Vol 25: Issue 1, OCT 2014; Vol 24: Issue 10, FEB 2012; Vol 22: Issue 2, JUL 2009; Vol 19: Issue 7, AUG 2009; Vol 19: Issue 8, MAR 2008; Vol 18: Issue 3, OCT 2006; Vol 16: Issue 10, AUG 2005; Vol 15: Issue 8, MAY 2002; Vol 12: Issue 5

99396 Periodic comprehensive preventive medicine reevaluation and management of an individual including an age and gender appropriate history, examination, counseling/anticipatory guidance/risk factor reduction interventions, and the ordering of laboratory/diagnostic procedures, established patient; 40-64 years MIPS

G Code Crosswalk G0101, G0102, G0402, G0438, G0439

FRVU 2.75 **NFRVU** 3.66 **GLOBAL XXX** **MUE** 0

MOD 24, 25, 33, 99, AF, AG, AK, CR, ET, FP, FS, FT, GA, GC, GE, GJ, GR, GY, GZ, HB, HC, KX, Q5, Q6, QJ, SA, XE, XP, XS, XU

CPT® Asst: NOV 2021; Vol 31: Issue 11, SEP 2017; Vol 27: Issue 9, MAR 2016; Vol 26: Issue 3, JAN 2015; Vol 25: Issue 1, OCT 2014; Vol 24: Issue 10, JUL 2009; Vol 19: Issue 7, AUG 2009; Vol 19: Issue 8, OCT 2006; Vol 16: Issue 10, AUG 2005; Vol 15: Issue 8, MAY

● New Code ▲ Revised Code + Add-On Code # Resequenced Code ⚡ FDA Approval Pending Ⓞ Modifier 51 Exempt Ⓟ Modifier 63 Exempt
 ♀ Female-only Procedure ♂ Male-only Procedure 🏠 Maternity MIPS Merit-based Incentive Payment System Code
 ★ Telemedicine Code **FRVU** Facility Total RVU **NFRVU** Non-facility Total RVU

Anesthesia

00100 - 00176

ANESTHESIA

Anesthesia for Procedures on the Head (00100-00222)

- 00100** Anesthesia for procedures on salivary glands, including biopsy MIPS
MOD 23, 53, 76, 77, 99, AA, AD, CR, ET, G8, G9, GA, GJ, GR, KX, LT, P1, P2, P3, P4, P5, P6, Q5, Q6, QJ, QK, QS, QX, QY, QZ, RT
CPT® Asst: OCT 2019; Vol 29: Issue 10, DEC 2017; Vol 27: Issue 12, AUG 2014; Vol 24: Issue 8, JUL 2012; Vol 22: Issue 7, JUL 2011; Vol 21: Issue 7, OCT 2011; Vol 21: Issue 10, NOV 2007; Vol 17: Issue 11, FEB 2006; Vol 16: Issue 2, MAR 2006; Vol 16: Issue 3, NOV 2002; Vol 12: Issue 11
- 00102** Anesthesia for procedures involving plastic repair of cleft lip MIPS
MOD 53, 76, 77, 99, AA, AD, CR, ET, G8, G9, GA, GC, GJ, GR, KX, P1, P2, P3, P4, P5, P6, Q6, QK, QS, QX, QY, QZ
CPT® Asst: DEC 2017; Vol 27: Issue 12, AUG 2014; Vol 24: Issue 8
- 00103** Anesthesia for reconstructive procedures of eyelid (eg, blepharoplasty, ptosis surgery) MIPS
MOD 53, 76, 77, 99, AA, AD, CR, E1, E2, E3, E4, ET, G8, G9, GA, GC, GJ, GR, KX, P1, P2, P3, P4, P5, P6, Q6, QK, QS, QX, QY, QZ
CPT® Asst: DEC 2017; Vol 27: Issue 12, AUG 2014; Vol 24: Issue 8
- 00104** Anesthesia for electroconvulsive therapy MIPS
MOD 53, 59, 76, 77, 99, AA, AD, CR, ET, G8, G9, GA, GC, GJ, GR, H9, HK, HW, KX, P1, P2, P3, P4, P5, P6, Q6, QK, QS, QX, QY, QZ, XE, XP, XS, XU
CPT® Asst: DEC 2017; Vol 27: Issue 12, AUG 2014; Vol 24: Issue 8
- 00120** Anesthesia for procedures on external, middle, and inner ear including biopsy; not otherwise specified MIPS
MOD 23, 53, 76, 77, 99, AA, AD, CR, ET, G8, G9, GA, GC, GJ, GR, KX, LT, P1, P2, P3, P4, P5, P6, Q6, QK, QS, QX, QY, QZ, RT
CPT® Asst: DEC 2017; Vol 27: Issue 12, AUG 2014; Vol 24: Issue 8
- 00124** Anesthesia for procedures on external, middle, and inner ear including biopsy; otoscopy MIPS
MOD 23, 53, 76, 77, 99, AA, AD, CR, ET, G8, G9, GA, GC, GJ, GR, KX, LT, P1, P2, P3, P4, P5, P6, Q5, Q6, QJ, QK, QS, QX, QY, QZ, RT
CPT® Asst: DEC 2017; Vol 27: Issue 12, AUG 2014; Vol 24: Issue 8
- 00126** Anesthesia for procedures on external, middle, and inner ear including biopsy; tympanotomy MIPS
MOD 23, 53, 76, 77, 99, AA, AD, CR, ET, G8, G9, GA, GC, GJ, GR, KX, LT, P1, P2, P3, P4, P5, P6, Q5, Q6, QJ, QK, QS, QX, QY, QZ, RT
CPT® Asst: DEC 2017; Vol 27: Issue 12, AUG 2014; Vol 24: Issue 8
- 00140** Anesthesia for procedures on eye; not otherwise specified MIPS
MOD 23, 53, 76, 77, 99, AA, AD, CR, ET, G8, G9, GA, GC, GJ, GR, KX, LT, P1, P2, P3, P4, P5, P6, Q5, Q6, QJ, QK, QS, QX, QY, QZ, RT
CPT® Asst: DEC 2017; Vol 27: Issue 12, AUG 2014; Vol 24: Issue 8
- 00142** Anesthesia for procedures on eye; lens surgery MIPS
MOD 23, 53, 76, 77, 99, AA, AD, CR, ET, G8, G9, GA, GC, GJ, GR, KX, LT, P1, P2, P3, P4, P5, P6, Q6, QK, QS, QX, QY, QZ, RT
CPT® Asst: DEC 2017; Vol 27: Issue 12, AUG 2014; Vol 24: Issue 8
- 00144** Anesthesia for procedures on eye; corneal transplant MIPS
MOD 23, 53, 76, 77, 99, AA, AD, CR, ET, G8, G9, GA, GC, GJ, GR, KX, LT, P1, P2, P3, P4, P5, P6, Q6, QK, QS, QX, QY, QZ, RT
CPT® Asst: DEC 2017; Vol 27: Issue 12, AUG 2014; Vol 24: Issue 8
- 00145** Anesthesia for procedures on eye; vitreoretinal surgery MIPS
MOD 23, 53, 76, 77, 99, AA, AD, CR, ET, G8, G9, GA, GC, GJ, GR, KX, LT, P1, P2, P3, P4, P5, P6, Q6, QK, QS, QX, QY, QZ, RT
CPT® Asst: DEC 2017; Vol 27: Issue 12, AUG 2014; Vol 24: Issue 8
- 00147** Anesthesia for procedures on eye; iridectomy MIPS
MOD 23, 53, 76, 77, 99, AA, AD, CR, ET, G8, G9, GA, GC, GJ, GR, KX, LT, P1, P2, P3, P4, P5, P6, Q6, QK, QS, QX, QY, QZ, RT
CPT® Asst: DEC 2017; Vol 27: Issue 12, AUG 2014; Vol 24: Issue 8
- 00148** Anesthesia for procedures on eye; ophthalmoscopy MIPS
MOD 23, 53, 76, 77, 99, AA, AD, CR, ET, G8, G9, GA, GC, GJ, GR, KX, LT, P1, P2, P3, P4, P5, P6, Q6, QK, QS, QX, QY, QZ, RT
CPT® Asst: DEC 2017; Vol 27: Issue 12, AUG 2014; Vol 24: Issue 8
- 00160** Anesthesia for procedures on nose and accessory sinuses; not otherwise specified MIPS
MOD 23, 53, 76, 77, 99, AA, AD, CR, ET, G8, G9, GA, GC, GJ, GR, KX, P1, P2, P3, P4, P5, P6, Q6, QK, QS, QX, QY, QZ
CPT® Asst: DEC 2017; Vol 27: Issue 12, AUG 2014; Vol 24: Issue 8
- 00162** Anesthesia for procedures on nose and accessory sinuses; radical surgery MIPS
MOD 23, 53, 76, 77, 99, AA, AD, CR, ET, G8, G9, GA, GC, GJ, GR, KX, P1, P2, P3, P4, P5, P6, Q6, QK, QS, QX, QY, QZ
CPT® Asst: DEC 2017; Vol 27: Issue 12, AUG 2014; Vol 24: Issue 8
- 00164** Anesthesia for procedures on nose and accessory sinuses; biopsy, soft tissue MIPS
MOD 23, 53, 76, 77, 99, AA, AD, CR, ET, G8, G9, GA, GC, GJ, GR, KX, P1, P2, P3, P4, P5, P6, Q6, QK, QS, QX, QY, QZ
CPT® Asst: DEC 2017; Vol 27: Issue 12, AUG 2014; Vol 24: Issue 8
- 00170** Anesthesia for intraoral procedures, including biopsy; not otherwise specified MIPS
MOD 23, 53, 76, 77, 99, AA, AD, CR, ET, G8, G9, GA, GC, GJ, GR, KX, P1, P2, P3, P4, P5, P6, Q5, Q6, QK, QS, QX, QY, QZ
CPT® Asst: DEC 2017; Vol 27: Issue 12, AUG 2014; Vol 24: Issue 8
- 00172** Anesthesia for intraoral procedures, including biopsy; repair of cleft palate MIPS
MOD 23, 53, 76, 77, 99, AA, AD, CR, ET, G8, G9, GA, GC, GJ, GR, KX, P1, P2, P3, P4, P5, P6, Q5, Q6, QK, QS, QX, QY, QZ
CPT® Asst: DEC 2017; Vol 27: Issue 12, AUG 2014; Vol 24: Issue 8
- 00174** Anesthesia for intraoral procedures, including biopsy; excision of retropharyngeal tumor MIPS
MOD 23, 53, 76, 77, 99, AA, AD, CR, ET, G8, G9, GA, GC, GJ, GR, KX, P1, P2, P3, P4, P5, P6, Q5, Q6, QK, QS, QX, QY, QZ
CPT® Asst: DEC 2017; Vol 27: Issue 12, AUG 2014; Vol 24: Issue 8
- 00176** Anesthesia for intraoral procedures, including biopsy; radical surgery MIPS
MOD 23, 53, 76, 77, 99, AA, AD, CR, ET, G8, G9, GA, GC, GJ, GR, KX, P1, P2, P3, P4, P5, P6, Q5, Q6, QK, QS, QX, QY, QZ
CPT® Asst: DEC 2017; Vol 27: Issue 12, AUG 2014; Vol 24: Issue 8

GLOBAL Global Days **MUE** Medically Unlikely Edit **MOD** Modifier Crosswalk **APC** APC Value **ASC PI** ASC Payment Indicator
APC SI APC Status Indicator **ASC Sep. Pay** ASC Separate Payment **CPT Asst** CPT® Assistant Article Reference
HCPCS CODE DOSAGE Dosage Amount for Drug **PAYMENT LIMIT** Maximum Reimbursement Amount

- 00541** Anesthesia for thoracotomy procedures involving lungs, pleura, diaphragm, and mediastinum (including surgical thoracoscopy); utilizing 1 lung ventilation MIPS
MOD 23, 53, 76, 77, AA, AD, CR, ET, G8, G9, GA, GC, GJ, GR, KX, P1, P2, P3, P4, P5, P6, Q5, Q6, QK, QS, QX, QY, QZ
CPT® Asst: DEC 2017; Vol 27: Issue 12, AUG 2014; Vol 24: Issue 8
- 00542** Anesthesia for thoracotomy procedures involving lungs, pleura, diaphragm, and mediastinum (including surgical thoracoscopy); decortication MIPS
MOD 23, 53, 76, 77, AA, AD, CR, ET, G8, G9, GA, GC, GJ, GR, KX, P1, P2, P3, P4, P5, P6, Q5, Q6, QK, QS, QX, QY, QZ
CPT® Asst: DEC 2017; Vol 27: Issue 12, AUG 2014; Vol 24: Issue 8
- 00546** Anesthesia for thoracotomy procedures involving lungs, pleura, diaphragm, and mediastinum (including surgical thoracoscopy); pulmonary resection with thoracoplasty MIPS
MOD 23, 53, 76, 77, AA, AD, CR, ET, G8, G9, GA, GC, GJ, GR, KX, P1, P2, P3, P4, P5, P6, Q5, Q6, QK, QS, QX, QY, QZ
CPT® Asst: DEC 2017; Vol 27: Issue 12, AUG 2014; Vol 24: Issue 8
- 00548** Anesthesia for thoracotomy procedures involving lungs, pleura, diaphragm, and mediastinum (including surgical thoracoscopy); intrathoracic procedures on the trachea and bronchi MIPS
MOD 23, 53, 76, 77, AA, AD, CR, ET, G8, G9, GA, GC, GJ, GR, KX, P1, P2, P3, P4, P5, P6, Q5, Q6, QK, QS, QX, QY, QZ
CPT® Asst: DEC 2017; Vol 27: Issue 12, AUG 2014; Vol 24: Issue 8
- 00550** Anesthesia for sternal debridement MIPS
MOD 23, 53, 76, 77, AA, AD, CR, ET, G8, G9, GA, GC, GJ, GR, KX, P1, P2, P3, P4, P5, P6, Q5, Q6, QK, QS, QX, QY, QZ
CPT® Asst: DEC 2017; Vol 27: Issue 12, AUG 2014; Vol 24: Issue 8
- 00560** Anesthesia for procedures on heart, pericardial sac, and great vessels of chest; without pump oxygenator MIPS
MOD 23, 53, 59, 76, 77, AA, AD, CR, ET, G8, G9, GA, GC, GJ, GR, KX, P1, P2, P3, P4, P5, P6, Q5, Q6, QK, QS, QX, QY, QZ, XE, XP, XS, XU
CPT® Asst: DEC 2017; Vol 27: Issue 12, AUG 2014; Vol 24: Issue 8
- 00561** Anesthesia for procedures on heart, pericardial sac, and great vessels of chest; with pump oxygenator, younger than 1 year of age
MOD 23, 53, 59, 76, 77, AA, AD, CR, ET, G8, G9, GA, GC, GJ, GR, KX, P1, P2, P3, P4, P5, P6, Q5, Q6, QK, QS, QX, QY, QZ, XE, XP, XS, XU
CPT® Asst: DEC 2017; Vol 27: Issue 12, AUG 2014; Vol 24: Issue 8
- 00562** Anesthesia for procedures on heart, pericardial sac, and great vessels of chest; with pump oxygenator, age 1 year or older, for all noncoronary bypass procedures (eg, valve procedures) or for re-operation for coronary bypass more than 1 month after original operation MIPS
MOD 23, 53, 59, 76, 77, AA, AD, CR, ET, G8, G9, GA, GC, GJ, GR, KX, P1, P2, P3, P4, P5, P6, Q5, Q6, QK, QS, QX, QY, QZ, XE, XP, XS, XU
CPT® Asst: DEC 2017; Vol 27: Issue 12, AUG 2014; Vol 24: Issue 8
- 00563** Anesthesia for procedures on heart, pericardial sac, and great vessels of chest; with pump oxygenator with hypothermic circulatory arrest MIPS

MOD 23, 53, 59, 76, 77, AA, AD, CR, ET, G8, G9, GA, GC, GJ, GR, KX, P1, P2, P3, P4, P5, P6, Q5, Q6, QK, QS, QX, QY, QZ, XE, XP, XS, XU
CPT® Asst: DEC 2017; Vol 27: Issue 12, AUG 2014; Vol 24: Issue 8

- 00566** Anesthesia for direct coronary artery bypass grafting; without pump oxygenator MIPS
MOD 23, 53, 59, 76, 77, AA, AD, CR, ET, G8, G9, GA, GC, GJ, GR, KX, P1, P2, P3, P4, P5, P6, Q5, Q6, QK, QS, QX, QY, QZ, XE, XP, XS, XU
CPT® Asst: DEC 2017; Vol 27: Issue 12, AUG 2014; Vol 24: Issue 8
- 00567** Anesthesia for direct coronary artery bypass grafting; with pump oxygenator MIPS
MOD 23, 53, 59, 76, 77, AA, AD, CR, ET, G8, G9, GA, GC, GJ, GR, KX, P1, P2, P3, P4, P5, P6, Q5, Q6, QK, QS, QX, QY, QZ, XE, XP, XS, XU
CPT® Asst: DEC 2017; Vol 27: Issue 12, AUG 2014; Vol 24: Issue 8
- 00580** Anesthesia for heart transplant or heart/lung transplant MIPS
MOD 23, 53, 76, 77, AA, AD, CR, ET, G8, G9, GA, GC, GJ, GR, KX, P1, P2, P3, P4, P5, P6, Q5, Q6, QK, QS, QX, QY, QZ
CPT® Asst: DEC 2017; Vol 27: Issue 12, AUG 2014; Vol 24: Issue 8, NOV 2007; Vol 17: Issue 11

Anesthesia for Procedures on the Spine and Spinal Cord (00600-00670)

- 00600** Anesthesia for procedures on cervical spine and cord; not otherwise specified MIPS
MOD 23, 53, 76, 77, AA, AD, CR, ET, G8, G9, GA, GC, GJ, GR, KX, P1, P2, P3, P4, P5, P6, Q5, Q6, QK, QS, QX, QY, QZ
CPT® Asst: DEC 2017; Vol 27: Issue 12, AUG 2014; Vol 24: Issue 8, MAY 2007; Vol 17: Issue 5, NOV 2007; Vol 17: Issue 11, MAR 2006; Vol 16: Issue 3
- 00604** Anesthesia for procedures on cervical spine and cord; procedures with patient in the sitting position MIPS
MOD 23, 53, 76, 77, AA, AD, CR, ET, G8, G9, GA, GC, GJ, GR, KX, P1, P2, P3, P4, P5, P6, Q5, Q6, QK, QS, QX, QY, QZ
CPT® Asst: DEC 2017; Vol 27: Issue 12, AUG 2014; Vol 24: Issue 8
- 00620** Anesthesia for procedures on thoracic spine and cord, not otherwise specified MIPS
MOD 23, 53, 76, 77, AA, AD, CR, ET, G8, G9, GA, GC, GJ, GR, KX, P1, P2, P3, P4, P5, P6, Q5, Q6, QK, QS, QX, QY, QZ
CPT® Asst: DEC 2017; Vol 27: Issue 12, AUG 2014; Vol 24: Issue 8, MAR 2007; Vol 17: Issue 3
- 00625** Anesthesia for procedures on the thoracic spine and cord, via an anterior transthoracic approach; not utilizing 1 lung ventilation MIPS
MOD 23, 53, 76, 77, AA, AD, CR, ET, G8, G9, GA, GC, GJ, GR, KX, P1, P2, P3, P4, P5, P6, Q5, Q6, QK, QS, QX, QY, QZ
CPT® Asst: DEC 2017; Vol 27: Issue 12, AUG 2014; Vol 24: Issue 8, MAR 2007; Vol 17: Issue 3
- 00626** Anesthesia for procedures on the thoracic spine and cord, via an anterior transthoracic approach; utilizing 1 lung ventilation MIPS
MOD 23, 53, 76, 77, AA, AD, CR, ET, G8, G9, GA, GC, GJ, GR, KX, P1, P2, P3, P4, P5, P6, Q5, Q6, QK, QS, QX, QY, QZ
CPT® Asst: DEC 2017; Vol 27: Issue 12, AUG 2014; Vol 24: Issue 8, MAR 2007; Vol 17: Issue 3

Surgery/Respiratory System

Surgical Procedures on the Respiratory System (30000-32999)

Surgical Procedures on the Nose (30000-30999)

Incision Procedures on the Nose (30000-30020)

30000 Drainage abscess or hematoma, nasal, internal approach
FRVU 3.65 **NFRVU** 8.12 **GLOBAL** 010 **MUE** 1
MOD 22, 47, 51, 52, 53, 54, 55, 56, 58, 59, 63, 73, 74, 76, 77, 78, 79, 80, 81, 82, 99, AQ, AR, AS, CR, ET, GA, GC, GJ, GR, KX, PD, Q5, Q6, QJ, XE, XP, XS, XU

ASC PI: P2 **ASC Sep. Pay:** Yes **APC SI:** T **APC:** 5164

30020 Drainage abscess or hematoma, nasal septum
FRVU 3.68 **NFRVU** 8.21 **GLOBAL** 010 **MUE** 1
MOD 22, 47, 51, 52, 53, 54, 55, 56, 58, 59, 63, 73, 74, 76, 77, 78, 79, 99, AQ, AR, CR, ET, GA, GC, GJ, GR, KX, PD, Q5, Q6, QJ, XE, XP, XS, XU

ASC PI: P3 **ASC Sep. Pay:** Yes **APC SI:** T **APC:** 5162

Excision Procedures on the Nose (30100-30160)

30100 Biopsy, intranasal
FRVU 2.02 **NFRVU** 4.27 **GLOBAL** 000 **MUE** 2
MOD 22, 47, 51, 52, 53, 58, 59, 63, 73, 74, 76, 77, 78, 79, 99, AQ, AR, CR, ET, GA, GC, GJ, GR, KX, LT, PD, Q5, Q6, QJ, RT, XE, XP, XS, XU

ASC PI: P3 **ASC Sep. Pay:** Yes **APC SI:** J1 **APC:** 5163

CPT® Asst: JAN 2019; Vol 29: Issue 1

30110 Excision, nasal polyp(s), simple
FRVU 3.98 **NFRVU** 7.53 **GLOBAL** 010 **MUE** 1
MOD 22, 47, 50, 51, 52, 54, 55, 56, 58, 59, 63, 73, 74, 76, 77, 78, 79, 99, AQ, AR, CR, ET, GA, GC, GJ, GR, KX, LT, PD, Q5, Q6, QJ, RT, XE, XP, XS, XU

ASC PI: P3 **ASC Sep. Pay:** Yes **APC SI:** J1 **APC:** 5163

30115 Excision, nasal polyp(s), extensive
FRVU 14.20 **NFRVU** 14.20 **GLOBAL** 090 **MUE** 1
MOD 22, 47, 50, 51, 52, 53, 54, 55, 56, 58, 59, 63, 73, 74, 76, 77, 78, 79, 99, AQ, AR, CR, ET, GA, GC, GJ, GR, KX, LT, PD, Q5, Q6, QJ, RT, XE, XP, XS, XU

ASC PI: A2 **ASC Sep. Pay:** Yes **APC SI:** J1 **APC:** 5164

30117 Excision or destruction (eg, laser), intranasal lesion; internal approach
FRVU 10.05 **NFRVU** 29.39 **GLOBAL** 090 **MUE** 2
MOD 22, 47, 51, 52, 53, 54, 55, 56, 58, 59, 63, 73, 74, 76, 77, 78, 79, 99, AQ, AR, CR, ET, GA, GC, GJ, GR, KX, LT, PD, Q5, Q6, QJ, RT, XE, XP, XS, XU

ASC PI: A2 **ASC Sep. Pay:** Yes **APC SI:** J1 **APC:** 5164

CPT® Asst: JAN 2022; Vol 32: Issue 1, SEP 2020; Vol 30: Issue 9, JUL 2019; Vol 29: Issue 7, NOV 2019; Vol 29: Issue 11

30118 Excision or destruction (eg, laser), intranasal lesion; external approach (lateral rhinotomy)
FRVU 24.03 **NFRVU** 24.03 **GLOBAL** 090 **MUE** 1
MOD 22, 47, 51, 52, 53, 54, 55, 56, 58, 59, 62, 63, 73, 74, 76, 77,

78, 79, 99, AQ, AR, CR, ET, GA, GC, GJ, GR, KX, LT, PD, Q5, Q6, QJ, RT, XE, XP, XS, XU

ASC PI: A2 **ASC Sep. Pay:** Yes **APC SI:** J1 **APC:** 5164

30120 Excision or surgical planing of skin of nose for rhinophyma
FRVU 12.59 **NFRVU** 15.31 **GLOBAL** 090 **MUE** 1
MOD 22, 47, 51, 52, 53, 54, 55, 56, 58, 59, 63, 73, 74, 76, 77, 78, 79, 99, AQ, AR, CR, ET, GA, GC, GJ, GR, KX, PD, Q5, Q6, QJ, XE, XP, XS, XU

ASC PI: A2 **ASC Sep. Pay:** Yes **APC SI:** J1 **APC:** 5164

CPT® Asst: MAY 2007; Vol 17: Issue 5

30124 Excision dermoid cyst, nose; simple, skin, subcutaneous
FRVU 9.21 **NFRVU** 9.21 **GLOBAL** 090 **MUE** 2
MOD 22, 47, 51, 52, 53, 54, 55, 56, 58, 59, 63, 73, 74, 76, 77, 78, 79, 99, AQ, AR, CR, ET, GA, GC, GJ, GR, KX, PD, Q5, Q6, QJ, XE, XP, XS, XU

ASC PI: R2 **ASC Sep. Pay:** Yes **APC SI:** J1 **APC:** 5163

30125 Excision dermoid cyst, nose; complex, under bone or cartilage
FRVU 19.88 **NFRVU** 19.88 **GLOBAL** 090 **MUE** 1
MOD 22, 47, 51, 52, 53, 54, 55, 56, 58, 59, 63, 73, 74, 76, 77, 78, 79, 80, 81, 82, 99, AQ, AR, AS, CR, ET, GA, GC, GJ, GR, KX, PD, Q5, Q6, QJ, XE, XP, XS, XU

ASC PI: A2 **ASC Sep. Pay:** Yes **APC SI:** J1 **APC:** 5165

30130 Excision inferior turbinate, partial or complete, any method
FRVU 12.67 **NFRVU** 12.67 **GLOBAL** 090 **MUE** 1
MOD 22, 47, 50, 51, 52, 53, 54, 55, 56, 58, 59, 63, 73, 74, 76, 77, 78, 79, 99, AQ, AR, CR, ET, GA, GC, GJ, GR, KX, LT, PD, Q5, Q6, QJ, RT, XE, XP, XS, XU

ASC PI: A2 **ASC Sep. Pay:** Yes **APC SI:** J1 **APC:** 5164

CPT® Asst: MAY 2003; Vol 13: Issue 5, SEP 2001; Vol 11: Issue 9

30140 Submucous resection inferior turbinate, partial or complete, any method
FRVU 5.32 **NFRVU** 8.95 **GLOBAL** 000 **MUE** 1
MOD 22, 47, 50, 51, 52, 53, 58, 59, 63, 73, 74, 76, 77, 78, 79, 99, AQ, AR, CR, ET, GA, GC, GJ, GR, KX, LT, PD, Q5, Q6, QJ, RT, XE, XP, XS, XU

ASC PI: A2 **ASC Sep. Pay:** Yes **APC SI:** J1 **APC:** 5164

CPT® Asst: JAN 2020; Vol 30: Issue 1, MAR 2008; Vol 18: Issue 3, DEC 2004; Vol 14: Issue 12, APR 2003; Vol 13: Issue 4, MAY 2003; Vol 13: Issue 5, DEC 2002; Vol 12: Issue 12

30150 Rhinectomy; partial
FRVU 24.35 **NFRVU** 24.35 **GLOBAL** 090 **MUE** 1
MOD 22, 47, 51, 52, 53, 54, 55, 56, 58, 59, 62, 63, 73, 74, 76, 77, 78, 79, 99, AQ, AR, CR, ET, GA, GC, GJ, GR, KX, PD, Q5, Q6, QJ, XE, XP, XS, XU

ASC PI: A2 **ASC Sep. Pay:** Yes **APC SI:** J1 **APC:** 5165

30160 Rhinectomy; total
FRVU 24.68 **NFRVU** 24.68 **GLOBAL** 090 **MUE** 1
MOD 22, 51, 52, 53, 54, 55, 56, 58, 62, 63, 73, 74, 76, 77, 78, 79, 80, 81, 82, 99, AQ, AR, AS, CR, ET, GA, GC, GJ, GR, KX, PD, Q5, Q6, QJ

ASC PI: A2 **ASC Sep. Pay:** Yes **APC SI:** J1 **APC:** 5165

GLOBAL Global Days **MUE** Medically Unlikely Edit **MOD** Modifier Crosswalk **APC** APC Value **ASC PI** ASC Payment Indicator

APC SI APC Status Indicator **ASC Sep. Pay** ASC Separate Payment **CPT Asst** CPT® Assistant Article Reference

HCPCS CODE DOSAGE Dosage Amount for Drug **PAYMENT LIMIT** Maximum Reimbursement Amount

31225 Maxillectomy; without orbital exenteration
FRVU 54.10 **NFRVU** 54.10 **GLOBAL** 090 **MUE** 1
MOD 22, 47, 50, 51, 52, 53, 54, 55, 56, 58, 59, 62, 63, 76, 77, 78, 79, 80, 81, 82, 99, AQ, AR, AS, CR, ET, GA, GC, GJ, GR, GY, GZ, KX, LT, PD, Q5, Q6, QJ, RT, XE, XP, XS, XU

31230 Maxillectomy; with orbital exenteration (en bloc)
FRVU 60.32 **NFRVU** 60.32 **GLOBAL** 090 **MUE** 1
MOD 22, 47, 50, 51, 52, 53, 54, 55, 56, 58, 59, 62, 63, 76, 77, 78, 79, 80, 81, 82, 99, AQ, AR, AS, CR, ET, GA, GC, GJ, GR, GY, GZ, KX, LT, PD, Q5, Q6, QJ, RT, XE, XP, XS, XU

Endoscopy Procedures on the Accessory Sinuses (31231-31298)

31231 Nasal endoscopy, diagnostic, unilateral or bilateral (separate procedure)
FRVU 1.93 **NFRVU** 5.70 **GLOBAL** 000 **MUE** 1
MOD 22, 47, 51, 52, 53, 58, 59, 63, 73, 74, 76, 77, 78, 79, 99, AQ, AR, CR, ET, GA, GC, GJ, GR, GY, GZ, KX, PD, Q5, Q6, QJ, XE, XP, XS, XU

ASC PI: P2 **ASC Sep. Pay:** Yes **APC SI:** T **APC:** 5151
CPT® Asst: APR 2021; Vol 31: Issue 4, APR 2018; Vol 28: Issue 4, JAN 2017; Vol 27: Issue 1, JUL 2017; Vol 27: Issue 7, FEB 2016; Vol 26: Issue 2, JUN 2011; Vol 21: Issue 6

31233 Nasal/sinus endoscopy, diagnostic; with maxillary sinusoscopy (via inferior meatus or canine fossa puncture)
FRVU 4.02 **NFRVU** 8.28 **GLOBAL** 000 **MUE** 1
MOD 22, 47, 50, 51, 52, 53, 58, 59, 63, 73, 74, 76, 77, 78, 79, 80, 81, 82, 99, AQ, AR, AS, CR, ET, GA, GC, GJ, GR, GY, GZ, KX, LT, PD, Q5, Q6, QJ, RT, XE, XP, XS, XU

ASC PI: A2 **ASC Sep. Pay:** Yes **APC SI:** T **APC:** 5152
CPT® Asst: APR 2018; Vol 28: Issue 4, JUN 2011; Vol 21: Issue 6

31235 Nasal/sinus endoscopy, diagnostic; with sphenoid sinusoscopy (via puncture of sphenoidal face or cannulation of ostium)
FRVU 4.73 **NFRVU** 9.37 **GLOBAL** 000 **MUE** 1
MOD 22, 47, 50, 51, 52, 53, 58, 59, 63, 73, 74, 76, 77, 78, 79, 80, 81, 82, 99, AQ, AR, AS, CR, ET, GA, GC, GJ, GR, GY, GZ, KX, LT, PD, Q5, Q6, QJ, RT, XE, XP, XS, XU

ASC PI: A2 **ASC Sep. Pay:** Yes **APC SI:** J1 **APC:** 5153
CPT® Asst: APR 2018; Vol 28: Issue 4, JUN 2011; Vol 21: Issue 6

31237 Nasal/sinus endoscopy, surgical; with biopsy, polypectomy or debridement (separate procedure)
FRVU 4.76 **NFRVU** 7.72 **GLOBAL** 000 **MUE** 1
MOD 22, 47, 50, 51, 52, 53, 58, 59, 63, 73, 74, 76, 77, 78, 79, 99, AQ, AR, CR, ET, GA, GC, GJ, GR, GY, GZ, KX, LT, PD, Q5, Q6, QJ, RT, XE, XP, XS, XU

ASC PI: A2 **ASC Sep. Pay:** Yes **APC SI:** J1 **APC:** 5153
CPT® Asst: JUL 2023; Vol 33: Issue 7, JUL 2021; Vol 31: Issue 7, NOV 2021; Vol 31: Issue 11, JAN 2020; Vol 30: Issue 1, APR 2019; Vol 29: Issue 4, JUL 2019; Vol 29: Issue 7, APR 2018; Vol 28: Issue 4, FEB 2016; Vol 26: Issue 2, JAN 2015; Vol 25: Issue 1, JUN 2011; Vol 21: Issue 6, DEC 2011; Vol 21: Issue 12, MAY 2003; Vol 13: Issue 5, DEC 2001; Vol 11: Issue 12

31242 Nasal/sinus endoscopy, surgical; with destruction by radiofrequency ablation, posterior nasal nerve
MOD 22, 47, 52, 53, 58, 63, 76, 77, 78, 79, 99, AQ, CR, ET, GA, GC, GJ, GR, GU, GY, GZ, PD, Q5, Q6, QJ, SC

31243 Nasal/sinus endoscopy, surgical; with destruction by cryoablation, posterior nasal nerve
MOD 22, 47, 52, 53, 58, 63, 76, 77, 78, 79, 99, AQ, CR, ET, GA, GC, GJ, GR, GU, GY, GZ, PD, Q5, Q6, QJ, SC

31238 Nasal/sinus endoscopy, surgical; with control of nasal hemorrhage
FRVU 4.97 **NFRVU** 7.53 **GLOBAL** 000 **MUE** 1
MOD 22, 47, 50, 51, 52, 53, 58, 59, 63, 73, 74, 76, 77, 78, 79, 80, 81, 82, 99, AQ, AR, AS, CR, ET, GA, GC, GJ, GR, GY, GZ, KX, LT, PD, Q5, Q6, QJ, RT, XE, XP, XS, XU

ASC PI: A2 **ASC Sep. Pay:** Yes **APC SI:** J1 **APC:** 5153
CPT® Asst: APR 2018; Vol 28: Issue 4, JUN 2011; Vol 21: Issue 6

31239 Nasal/sinus endoscopy, surgical; with dacryocystorhinostomy
FRVU 18.08 **NFRVU** 18.08 **GLOBAL** 010 **MUE** 1
MOD 22, 47, 50, 51, 52, 53, 54, 55, 56, 58, 59, 63, 73, 74, 76, 77, 78, 79, 80, 81, 82, 99, AQ, AR, AS, CR, ET, GA, GC, GJ, GR, GY, GZ, KX, LT, PD, Q5, Q6, QJ, RT, XE, XP, XS, XU

ASC PI: A2 **ASC Sep. Pay:** Yes **APC SI:** J1 **APC:** 5154
CPT® Asst: APR 2018; Vol 28: Issue 4, JUN 2011; Vol 21: Issue 6

31240 Nasal/sinus endoscopy, surgical; with concha bullosa resection
FRVU 4.73 **NFRVU** 4.73 **GLOBAL** 000 **MUE** 1
MOD 22, 47, 50, 51, 52, 53, 58, 59, 63, 73, 74, 76, 77, 78, 79, 80, 81, 82, 99, AQ, AR, AS, CR, ET, GA, GC, GJ, GR, GY, GZ, KX, LT, PD, Q5, Q6, QJ, RT, XE, XP, XS, XU

ASC PI: A2 **ASC Sep. Pay:** Yes **APC SI:** J1 **APC:** 5153
CPT® Asst: APR 2018; Vol 28: Issue 4, FEB 2016; Vol 26: Issue 2, JUN 2011; Vol 21: Issue 6, MAY 2003; Vol 13: Issue 5

31241 Nasal/sinus endoscopy, surgical; with ligation of sphenopalatine artery
FRVU 13.21 **NFRVU** 13.21 **GLOBAL** 000 **MUE** 1
MOD 22, 47, 50, 51, 52, 53, 58, 63, 76, 77, 78, 79, 80, 81, 82, 99, AQ, AR, AS, CR, ET, GA, GC, GJ, GR, GY, GZ, KX, LT, PD, Q5, Q6, QJ, RT, SC

APC SI: J1 **APC:** 5153
CPT® Asst: APR 2018; Vol 28: Issue 4

31242 Code is out of numerical sequence. See 31237-31238.

31243 Code is out of numerical sequence. See 31237-31238.

31253 Code is out of numerical sequence. See 31255-31256.

31254 Nasal/sinus endoscopy, surgical with ethmoidectomy; partial (anterior)
FRVU 7.23 **NFRVU** 13.22 **GLOBAL** 000 **MUE** 1
MOD 22, 47, 50, 51, 52, 53, 58, 59, 63, 73, 74, 76, 77, 78, 79, 99, AQ, AR, CR, ET, GA, GC, GJ, GR, GY, GZ, KX, LT, PD, Q5, Q6, QJ, RT, XE, XP, XS, XU

ASC PI: A2 **ASC Sep. Pay:** Yes **APC SI:** J1 **APC:** 5155
CPT® Asst: APR 2019; Vol 29: Issue 4, APR 2018; Vol 28: Issue 4, FEB 2016; Vol 26: Issue 2, JUN 2011; Vol 21: Issue 6, JUL 2011; Vol 21: Issue 7, MAY 2003; Vol 13: Issue 5, DEC 2001; Vol 11: Issue 12

31255 Nasal/sinus endoscopy, surgical with ethmoidectomy; total (anterior and posterior)

FRVU 9.62 **NFRVU** 9.62 **GLOBAL** 000 **MUE** 1
MOD 22, 47, 50, 51, 52, 53, 58, 59, 63, 73, 74, 76, 77, 78, 79, 99, AQ, AR, CR, ET, GA, GC, GJ, GR, GY, GZ, KX, LT, PD, Q5, Q6, QJ, RT, XE, XP, XS, XU

Surgery/Hemic and Lymphatic Systems

Surgical Procedures on the Hemic and Lymphatic Systems (38100-38999)

Surgical Procedures on the Spleen (38100-38200)

Excision Procedures on the Spleen (38100-38102)

38100 Splenectomy; total (separate procedure) **MIPS**
FRVU 34.32 **NFRVU** 34.32 **GLOBAL** 090 **MUE** 1
MOD 22, 47, 51, 52, 53, 54, 55, 56, 58, 59, 62, 63, 76, 77, 78, 79, 80, 81, 82, 99, AQ, AR, AS, CR, ET, GA, GC, GJ, GR, KX, Q5, Q6, QJ, XE, XP, XS, XU
CPT® Asst: SEP 2012; Vol 22: Issue 9

38101 Splenectomy; partial (separate procedure) **MIPS**
FRVU 34.74 **NFRVU** 34.74 **GLOBAL** 090 **MUE** 1
MOD 22, 47, 51, 52, 53, 54, 55, 56, 58, 59, 62, 63, 76, 77, 78, 79, 80, 81, 82, 99, AQ, AR, AS, CR, ET, GA, GC, GJ, GR, KX, Q5, Q6, QJ, XE, XP, XS, XU
CPT® Asst: SEP 2012; Vol 22: Issue 9

38102 Splenectomy; total, en bloc for extensive disease, in conjunction with other procedure (List in addition to code for primary procedure)
FRVU 7.77 **NFRVU** 7.77 **GLOBAL** ZZZ **MUE** 1
MOD 47, 52, 53, 58, 62, 63, 76, 77, 78, 79, 80, 81, 82, 99, AQ, AR, AS, CR, ET, GA, GC, GJ, GR, KX, Q5, Q6, QJ
CPT® Asst: SEP 2012; Vol 22: Issue 9

Repair Procedures on the Spleen (38115)

38115 Repair of ruptured spleen (splenorhaphy) with or without partial splenectomy **MIPS**
FRVU 38.52 **NFRVU** 38.52 **GLOBAL** 090 **MUE** 1
MOD 22, 47, 51, 52, 53, 54, 55, 56, 58, 62, 63, 76, 77, 78, 79, 80, 81, 82, 99, AQ, AR, AS, CR, ET, GA, GC, GJ, GR, KX, Q5, Q6, QJ
CPT® Asst: SEP 2012; Vol 22: Issue 9

Laparoscopic Procedures on the Spleen (38120-38129)

38120 Laparoscopy, surgical, splenectomy **MIPS**
FRVU 31.62 **NFRVU** 31.62 **GLOBAL** 090 **MUE** 1
MOD 22, 47, 51, 52, 53, 54, 55, 56, 58, 59, 62, 63, 76, 77, 78, 79, 80, 81, 82, 99, AQ, AR, AS, CR, ET, GA, GC, GJ, GR, KX, Q5, Q6, QJ, XE, XP, XS, XU
APC SI: J1 **APC:** 5362
CPT® Asst: SEP 2012; Vol 22: Issue 9, MAR 2000; Vol 10: Issue 3

38129 Unlisted laparoscopy procedure, spleen **MIPS**
FRVU 0.00 **NFRVU** 0.00 **GLOBAL** YYY **MUE** 1
MOD 47, 51, 53, 62, 66, 78, 79, 80, 81, 82, 99, AR, AS, GY, GZ, KX
APC SI: J1 **APC:** 5361
CPT® Asst: SEP 2012; Vol 22: Issue 9, MAR 2000; Vol 10: Issue 3

Injection Procedure on the Spleen (38200)

38200 Injection procedure for splenoportography
FRVU 3.83 **NFRVU** 3.83 **GLOBAL** 000 **MUE** 1

MOD 22, 47, 51, 52, 58, 63, 73, 74, 76, 77, 78, 79, 80, 81, 82, 99, AQ, AR, AS, CR, ET, GA, GC, GJ, GR, KX, PD, Q5, Q6, QJ
ASC PI: N1 **ASC Sep. Pay:** No

General Surgical Procedures on the Hemic and Lymphatic Systems (38204-38232)

Bone Marrow or Stem Cell Services/Procedures (38204-38232)

38204 Management of recipient hematopoietic progenitor cell donor search and cell acquisition
FRVU 2.97 **NFRVU** 2.97 **GLOBAL** XXX **MUE** 0
MOD 52, 63, 73, 74, 76, 77, 79, 99, AQ, AR, CR, ET, GA, GC, GJ, GR, GY, GZ, KX, Q5, Q6, QJ
ASC PI: N1 **ASC Sep. Pay:** No
CPT® Asst: OCT 2013; Vol 23: Issue 10, JUN 2009; Vol 19: Issue 6

38205 Blood-derived hematopoietic progenitor cell harvesting for transplantation, per collection; allogeneic
FRVU 2.48 **NFRVU** 2.48 **GLOBAL** 000 **MUE** 1
MOD 22, 47, 51, 52, 58, 63, 76, 77, 78, 79, 80, 81, 82, 99, AQ, AR, AS, CR, ET, GA, GC, GJ, GR, GY, GZ, KX, Q5, Q6, QJ
CPT® Asst: MAY 2018; Vol 28: Issue 5, OCT 2013; Vol 23: Issue 10, JUN 2009; Vol 19: Issue 6

38206 Blood-derived hematopoietic progenitor cell harvesting for transplantation, per collection; autologous
FRVU 2.46 **NFRVU** 2.46 **GLOBAL** 000 **MUE** 1
MOD 22, 47, 51, 52, 58, 63, 73, 74, 76, 77, 78, 79, 80, 81, 82, 99, AQ, AR, AS, CR, ET, GA, GC, GJ, GR, GY, GZ, KX, PD, Q5, Q6, QJ
ASC PI: G2 **ASC Sep. Pay:** No **APC SI:** S **APC:** 5242
CPT® Asst: MAY 2018; Vol 28: Issue 5, OCT 2013; Vol 23: Issue 10, JUN 2009; Vol 19: Issue 6

38207 Transplant preparation of hematopoietic progenitor cells; cryopreservation and storage
FRVU 1.33 **NFRVU** 1.33 **GLOBAL** XXX **MUE** 0
MOD 52, 53, 63, 76, 77, 79, 99, AR, CR, ET, GA, GC, GJ, GR, KX, Q5, Q6, QJ
APC SI: S **APC:** 5241
CPT® Asst: OCT 2013; Vol 23: Issue 10, JUN 2009; Vol 19: Issue 6

38208 Transplant preparation of hematopoietic progenitor cells; thawing of previously frozen harvest, without washing, per donor
FRVU 0.84 **NFRVU** 0.84 **GLOBAL** XXX **MUE** 0
MOD 52, 53, 63, 76, 77, 79, 99, AR, CR, ET, GA, GC, GJ, GR, KX, Q5, Q6, QJ
APC SI: S **APC:** 5241
CPT® Asst: OCT 2013; Vol 23: Issue 10, JUN 2009; Vol 19: Issue 6

38209 Transplant preparation of hematopoietic progenitor cells; thawing of previously frozen harvest, with washing, per donor
FRVU 0.35 **NFRVU** 0.35 **GLOBAL** XXX **MUE** 0
MOD 52, 53, 63, 76, 77, 79, 99, AR, CR, ET, GA, GC, GJ, GR, KX, Q5, Q6, QJ
APC SI: S **APC:** 5241

GLOBAL Global Days **MUE** Medically Unlikely Edit **MOD** Modifier Crosswalk **APC** APC Value **ASC PI** ASC Payment Indicator
APC SI APC Status Indicator **ASC Sep. Pay** ASC Separate Payment **CPT Asst** CPT® Assistant Article Reference
HCPCS CODE DOSAGE Dosage Amount for Drug **PAYMENT LIMIT** Maximum Reimbursement Amount

MOD 22, 50, 51, 52, 53, 54, 55, 56, 58, 59, 63, 73, 74, 76, 77, 78, 79, 80, 81, 82, 99, AQ, AR, AS, CR, ET, GA, GC, GJ, GR, KX, LT, PD, Q5, Q6, QJ, RT, XE, XP, XS, XU

ASC PI: A2 ASC Sep. Pay: Yes APC SI: J1 APC: 5164

CPT® Asst: DEC 2014; Vol 24: Issue 12

40761 Plastic repair of cleft lip/nasal deformity; with cross lip pedicle flap (Abbe-Estlander type), including sectioning and inserting of pedicle

FRVU 32.25 NFRVU 32.25 GLOBAL 090 MUE 1

MOD 22, 51, 52, 53, 54, 55, 56, 58, 59, 63, 73, 74, 76, 77, 78, 79, 99, AQ, AR, CR, ET, GA, GC, GJ, GR, KX, PD, Q5, Q6, QJ, XE, XP, XS, XU

ASC PI: A2 ASC Sep. Pay: Yes APC SI: J1 APC: 5165

Other Procedures on the Lips (40799)

40799 Unlisted procedure, lips

FRVU 0.00 NFRVU 0.00 GLOBAL YYY MUE 1

MOD 51, 53, 62, 66, 78, 79, 80, 81, 82, AR, AS, GY, GZ, KX

APC SI: T APC: 5161

Surgical Procedures on the Vestibule of Mouth (40800-40899)

Incision Procedures on the Vestibule of Mouth (40800-40806)

40800 Drainage of abscess, cyst, hematoma, vestibule of mouth; simple

FRVU 3.54 NFRVU 6.08 GLOBAL 010 MUE 2

MOD 22, 47, 51, 52, 54, 55, 56, 58, 59, 63, 73, 74, 76, 77, 78, 79, 99, AQ, AR, CR, ET, GA, GC, GJ, GR, KX, PD, Q5, Q6, QJ, XE, XP, XS, XU

ASC PI: P3 ASC Sep. Pay: Yes APC SI: T APC: 5071

40801 Drainage of abscess, cyst, hematoma, vestibule of mouth; complicated

FRVU 5.89 NFRVU 8.70 GLOBAL 010 MUE 2

MOD 22, 47, 51, 52, 53, 54, 55, 56, 58, 63, 73, 74, 76, 77, 78, 79, 99, AQ, AR, CR, ET, GA, GC, GJ, GR, KX, PD, Q5, Q6, QJ

ASC PI: A2 ASC Sep. Pay: Yes APC SI: T APC: 5162

40804 Removal of embedded foreign body, vestibule of mouth; simple

FRVU 3.38 NFRVU 5.63 GLOBAL 010 MUE 1

MOD 22, 47, 51, 52, 53, 54, 55, 56, 58, 59, 63, 73, 74, 76, 77, 78, 79, 80, 81, 82, 99, AQ, AR, AS, CR, ET, GA, GC, GJ, GR, KX, PD, Q5, Q6, QJ, XE, XP, XS, XU

ASC PI: N1 ASC Sep. Pay: No APC SI: T APC: 5301

40805 Removal of embedded foreign body, vestibule of mouth; complicated

FRVU 5.88 NFRVU 8.52 GLOBAL 010 MUE 2

MOD 22, 47, 51, 52, 53, 54, 55, 56, 58, 63, 73, 74, 76, 77, 78, 79, 80, 81, 82, 99, AQ, AR, AS, CR, ET, GA, GC, GJ, GR, KX, PD, Q5, Q6, QJ

ASC PI: P3 ASC Sep. Pay: Yes APC SI: T APC: 5162

40806 Incision of labial frenum (frenotomy)

FRVU 0.86 NFRVU 2.99 GLOBAL 000 MUE 2

MOD 22, 47, 51, 52, 53, 58, 59, 63, 73, 74, 76, 77, 78, 79, 80, 81, 82, 99, AQ, AR, AS, CR, ET, GA, GC, GJ, GR, KX, PD, Q5, Q6, QJ, XE, XP, XS, XU

ASC PI: P3 ASC Sep. Pay: Yes APC SI: T APC: 5162

Excision and Destruction Procedures on the Vestibule of Mouth (40808-40820)

40808 Biopsy, vestibule of mouth

FRVU 2.65 NFRVU 5.10 GLOBAL 010 MUE 2

MOD 22, 47, 51, 52, 53, 54, 55, 56, 58, 59, 63, 73, 74, 76, 77, 78, 79, 99, AQ, AR, CR, ET, GA, GC, GJ, GR, KX, PD, Q5, Q6, QJ, XE, XP, XS, XU

ASC PI: P3 ASC Sep. Pay: Yes APC SI: T APC: 5162

CPT® Asst: JAN 2019; Vol 29: Issue 1

40810 Excision of lesion of mucosa and submucosa, vestibule of mouth; without repair

FRVU 3.69 NFRVU 6.55 GLOBAL 010 MUE 2

MOD 22, 47, 51, 52, 53, 54, 55, 56, 58, 59, 63, 73, 74, 76, 77, 78, 79, 99, AQ, AR, CR, ET, GA, GC, GJ, GR, KX, PD, Q5, Q6, QJ, XE, XP, XS, XU

ASC PI: P3 ASC Sep. Pay: Yes APC SI: J1 APC: 5164

40812 Excision of lesion of mucosa and submucosa, vestibule of mouth; with simple repair

FRVU 5.50 NFRVU 8.47 GLOBAL 010 MUE 2

MOD 22, 47, 51, 52, 53, 54, 55, 56, 58, 59, 63, 73, 74, 76, 77, 78, 79, 99, AQ, AR, CR, ET, GA, GC, GJ, GR, KX, PD, Q5, Q6, QJ, XE, XP, XS, XU

ASC PI: P3 ASC Sep. Pay: Yes APC SI: J1 APC: 5163

40814 Excision of lesion of mucosa and submucosa, vestibule of mouth; with complex repair

FRVU 8.50 NFRVU 11.23 GLOBAL 090 MUE 4

MOD 22, 47, 51, 52, 53, 54, 55, 56, 58, 59, 63, 73, 74, 76, 77, 78, 79, 99, AQ, AR, CR, ET, GA, GC, GJ, GR, KX, PD, Q5, Q6, QJ, XE, XP, XS, XU

ASC PI: A2 ASC Sep. Pay: Yes APC SI: J1 APC: 5164

40816 Excision of lesion of mucosa and submucosa, vestibule of mouth; complex, with excision of underlying muscle

FRVU 9.07 NFRVU 12.09 GLOBAL 090 MUE 2

MOD 22, 47, 51, 52, 53, 54, 55, 56, 58, 59, 63, 73, 74, 76, 77, 78, 79, 99, AQ, AR, CR, ET, GA, GC, GJ, GR, KX, PD, Q5, Q6, QJ, XE, XP, XS, XU

ASC PI: A2 ASC Sep. Pay: Yes APC SI: J1 APC: 5164

40818 Excision of mucosa of vestibule of mouth as donor graft

FRVU 7.99 NFRVU 11.05 GLOBAL 090 MUE 2

MOD 22, 47, 51, 52, 53, 54, 55, 56, 58, 59, 63, 73, 74, 76, 77, 78, 79, 80, 81, 82, 99, AQ, AR, AS, CR, ET, GA, GC, GJ, GR, KX, PD, Q5, Q6, QJ, XE, XP, XS, XU

ASC PI: A2 ASC Sep. Pay: Yes APC SI: T APC: 5162

40819 Excision of frenum, labial or buccal (frenumectomy, frenulectomy, frenectomy)

FRVU 5.93 NFRVU 8.07 GLOBAL 090 MUE 2

MOD 22, 47, 51, 52, 53, 54, 55, 56, 58, 63, 73, 74, 76, 77, 78, 79, 80, 81, 82, 99, AQ, AR, AS, CR, ET, GA, GC, GJ, GR, KX, PD, Q5, Q6, QJ

ASC PI: A2 ASC Sep. Pay: Yes APC SI: J1 APC: 5163

CPT® Asst: AUG 2020; Vol 30: Issue 8

40820 Destruction of lesion or scar of vestibule of mouth by physical methods (eg, laser, thermal, cryo, chemical)

FRVU 4.98 NFRVU 7.79 GLOBAL 010 MUE 2

MOD 22, 47, 51, 52, 54, 55, 56, 58, 63, 73, 74, 76, 77, 78, 79, 99, AQ, AR, CR, ET, GA, GC, GJ, GR, KX, PD, Q5, Q6, QJ

ASC PI: P3 ASC Sep. Pay: Yes APC SI: J1 APC: 5164

● New Code ▲ Revised Code + Add-On Code # Resequenced Code ⚡ FDA Approval Pending Ⓞ Modifier 51 Exempt Ⓟ Modifier 63 Exempt
 ♀ Female-only Procedure ♂ Male-only Procedure 🏠 Maternity 🏠 MIPS Merit-based Incentive Payment System Code
 ★ Telemedicine Code FRVU Facility Total RVU NFRVU Non-facility Total RVU

Surgery/Female Genital System

Surgical Procedures on the Female Genital System (56405-58999)

Surgical Procedures on the Vulva, Perineum, and Introitus (56405-56821)

Incision Procedures on the Vulva, Perineum, and Introitus (56405-56442)

56405 Incision and drainage of vulva or perineal abscess MIPS ♀
FRVU 3.83 **NFRVU** 4.46 **GLOBAL** 010 **MUE** 2
MOD 22, 47, 51, 52, 53, 54, 55, 56, 58, 59, 62, 63, 73, 74, 76, 77, 78, 79, 99, AQ, AR, CR, ET, GA, GC, GJ, GR, KX, PD, Q5, Q6, QJ, XE, XP, XS, XU
ASC PI: P3 **ASC Sep. Pay:** Yes **APC SI:** T **APC:** 5412
CPT® Asst: JUL 2019; Vol 29: Issue 7

56420 Incision and drainage of Bartholin's gland abscess MIPS ♀
FRVU 3.35 **NFRVU** 5.63 **GLOBAL** 010 **MUE** 1
MOD 22, 47, 51, 52, 53, 54, 55, 56, 58, 59, 63, 73, 74, 76, 77, 78, 79, 99, AQ, AR, CR, ET, GA, GC, GJ, GR, KX, PD, Q5, Q6, QJ, XE, XP, XS, XU
ASC PI: P2 **ASC Sep. Pay:** Yes **APC SI:** T **APC:** 5411
CPT® Asst: JUL 2019; Vol 29: Issue 7

56440 Marsupialization of Bartholin's gland cyst MIPS ♀
FRVU 5.43 **NFRVU** 5.43 **GLOBAL** 010 **MUE** 1
MOD 22, 47, 51, 52, 53, 54, 55, 56, 58, 59, 63, 73, 74, 76, 77, 78, 79, 99, AQ, AR, CR, ET, GA, GC, GJ, GR, KX, PD, Q5, Q6, QJ, XE, XP, XS, XU
ASC PI: A2 **ASC Sep. Pay:** Yes **APC SI:** J1 **APC:** 5414
CPT® Asst: JUL 2019; Vol 29: Issue 7

56441 Lysis of labial adhesions ♀
FRVU 4.65 **NFRVU** 5.53 **GLOBAL** 010 **MUE** 1
MOD 22, 47, 51, 52, 53, 54, 55, 56, 58, 59, 63, 73, 74, 76, 77, 78, 79, 80, 81, 82, 99, AQ, AR, AS, CR, ET, GA, GC, GJ, GR, KX, PD, Q5, Q6, QJ, XE, XP, XS, XU
ASC PI: A2 **ASC Sep. Pay:** Yes **APC SI:** J1 **APC:** 5414
CPT® Asst: JUL 2019; Vol 29: Issue 7

56442 Hymenotomy, simple incision ♀
FRVU 1.42 **NFRVU** 1.42 **GLOBAL** 000 **MUE** 1
MOD 22, 47, 51, 52, 53, 58, 59, 73, 74, 76, 77, 78, 79, 80, 81, 82, 99, AQ, AR, AS, GA, GC, GJ, GR, KX, PD, Q5, Q6, QJ, XE, XP, XS, XU
ASC PI: A2 **ASC Sep. Pay:** Yes **APC SI:** J1 **APC:** 5414
CPT® Asst: JUL 2019; Vol 29: Issue 7

Destruction Procedures on the Vulva, Perineum and Introitus (56501-56515)

56501 Destruction of lesion(s), vulva; simple (eg, laser surgery, electrosurgery, cryosurgery, chemosurgery) MIPS ♀
FRVU 4.03 **NFRVU** 5.84 **GLOBAL** 010 **MUE** 1
MOD 22, 47, 51, 52, 54, 55, 56, 58, 59, 63, 73, 74, 76, 77, 78, 79, 99, AQ, AR, CR, ET, GA, GC, GJ, GR, KX, PD, Q5, Q6, QJ, XE, XP, XS, XU
ASC PI: P3 **ASC Sep. Pay:** Yes **APC SI:** T **APC:** 5054

CPT® Asst: JUL 2019; Vol 29: Issue 7, AUG 2019; Vol 29: Issue 8

56515 Destruction of lesion(s), vulva; extensive (eg, laser surgery, electrosurgery, cryosurgery, chemosurgery) MIPS ♀
FRVU 6.40 **NFRVU** 8.38 **GLOBAL** 010 **MUE** 1
MOD 22, 47, 51, 52, 54, 55, 56, 58, 63, 73, 74, 76, 77, 78, 79, 99, AQ, AR, CR, ET, GA, GC, GJ, GR, KX, PD, Q5, Q6, QJ
ASC PI: A2 **ASC Sep. Pay:** Yes **APC SI:** T **APC:** 5054
CPT® Asst: JUL 2019; Vol 29: Issue 7, AUG 2019; Vol 29: Issue 8

Excision Procedures on the Vulva, Perineum, and Introitus (56605-56740)

56605 Biopsy of vulva or perineum (separate procedure); 1 lesion ♀
FRVU 1.77 **NFRVU** 2.91 **GLOBAL** 000 **MUE** 1
MOD 22, 47, 51, 52, 53, 58, 59, 62, 63, 73, 74, 76, 77, 78, 79, 99, AQ, AR, CR, ET, GA, GC, GJ, GR, KX, PD, Q5, Q6, QJ, XE, XP, XS, XU
ASC PI: P3 **ASC Sep. Pay:** Yes **APC SI:** T **APC:** 5413
CPT® Asst: JAN 2019; Vol 29: Issue 1, JUL 2019; Vol 29: Issue 7, JUN 2008; Vol 18: Issue 6, SEP 2000; Vol 10: Issue 9

56606 Biopsy of vulva or perineum (separate procedure); each separate additional lesion (List separately in addition to code for primary procedure) ♀
FRVU 0.88 **NFRVU** 1.16 **GLOBAL** ZZZ **MUE** 6
MOD 52, 53, 58, 59, 62, 63, 73, 74, 76, 77, 78, 79, 99, AQ, AR, CR, ET, GA, GC, GJ, GR, KX, PD, Q5, Q6, QJ, XE, XP, XS, XU
ASC PI: N1 **ASC Sep. Pay:** No
CPT® Asst: JAN 2019; Vol 29: Issue 1, JUL 2019; Vol 29: Issue 7

56620 Vulvectomy simple; partial MIPS ♀
FRVU 17.65 **NFRVU** 17.65 **GLOBAL** 090 **MUE** 1
MOD 22, 47, 51, 52, 53, 54, 55, 56, 58, 59, 62, 63, 73, 74, 76, 77, 78, 79, 80, 81, 82, 99, AQ, AR, AS, CR, ET, GA, GC, GJ, GR, KX, PD, Q5, Q6, QJ, XE, XP, XS, XU
ASC PI: A2 **ASC Sep. Pay:** Yes **APC SI:** J1 **APC:** 5414
CPT® Asst: JAN 2019; Vol 29: Issue 1, JUL 2019; Vol 29: Issue 7, DEC 2013; Vol 23: Issue 12

56625 Vulvectomy simple; complete MIPS ♀
FRVU 20.05 **NFRVU** 20.05 **GLOBAL** 090 **MUE** 1
MOD 22, 47, 51, 52, 53, 54, 55, 56, 58, 62, 63, 73, 74, 76, 77, 78, 79, 80, 81, 82, 99, AQ, AR, AS, CR, ET, GA, GC, GJ, GR, KX, PD, Q5, Q6, QJ
ASC PI: A2 **ASC Sep. Pay:** Yes **APC SI:** J1 **APC:** 5414
CPT® Asst: JUL 2019; Vol 29: Issue 7

56630 Vulvectomy, radical, partial MIPS ♀
FRVU 28.82 **NFRVU** 28.82 **GLOBAL** 090 **MUE** 1
MOD 22, 51, 52, 53, 54, 55, 56, 58, 59, 62, 63, 76, 77, 78, 79, 80, 81, 82, 99, AQ, AR, AS, CR, ET, GA, GC, GJ, GR, KX, Q5, Q6, QJ, XE, XP, XS, XU
CPT® Asst: FEB 2019; Vol 29: Issue 2, JUL 2019; Vol 29: Issue 7

56631 Vulvectomy, radical, partial; with unilateral inguinofemoral lymphadenectomy MIPS ♀
FRVU 35.50 **NFRVU** 35.50 **GLOBAL** 090 **MUE** 1
MOD 22, 51, 52, 53, 54, 55, 56, 58, 62, 63, 76, 77, 78, 79, 80, 81,

GLOBAL Global Days **MUE** Medically Unlikely Edit **MOD** Modifier Crosswalk **APC** APC Value **ASC PI** ASC Payment Indicator
APC SI APC Status Indicator **ASC Sep. Pay** ASC Separate Payment **CPT Asst** CPT® Assistant Article Reference
HCPCS CODE DOSAGE Dosage Amount for Drug **PAYMENT LIMIT** Maximum Reimbursement Amount

Introduction Procedures on the Vagina (57150-57180)

57150 Irrigation of vagina and/or application of medicament for treatment of bacterial, parasitic, or fungoid disease ♀

FRVU 0.77 NFRVU 1.75 GLOBAL 000 MUE 1

MOD 22, 47, 51, 52, 53, 58, 59, 63, 73, 74, 76, 77, 78, 79, 99, AQ, AR, CR, ET, GA, GC, GJ, GR, KX, PD, Q0, Q5, Q6, QJ, XE, XP, XS, XU

ASC PI: N1 ASC Sep. Pay: No APC SI: S APC: 5733

CPT® Asst: JUL 2019; Vol 29: Issue 7

57155 Insertion of uterine tandem and/or vaginal ovoids for clinical brachytherapy ♀

FRVU 8.44 NFRVU 11.87 GLOBAL 000 MUE 1

MOD 22, 47, 51, 52, 53, 58, 59, 62, 63, 73, 74, 76, 77, 78, 79, 99, AQ, AR, CR, ET, GA, GC, GJ, GR, KX, PD, Q5, Q6, QJ, XE, XP, XS, XU

ASC PI: A2 ASC Sep. Pay: Yes APC SI: J1 APC: 5415

CPT® Asst: JUL 2019; Vol 29: Issue 7, APR 2009; Vol 19: Issue 4, FEB 2002; Vol 12: Issue 2

57156 Insertion of a vaginal radiation afterloading apparatus for clinical brachytherapy ♀

FRVU 4.51 NFRVU 6.86 GLOBAL 000 MUE 1

MOD 22, 47, 51, 52, 53, 58, 73, 74, 76, 77, 78, 79, 80, 81, 82, 99, AQ, AR, AS, CR, ET, GA, GC, GJ, GR, KX, PD, Q5, Q6, QJ

ASC PI: G2 ASC Sep. Pay: Yes APC SI: T APC: 5412

CPT® Asst: JUL 2019; Vol 29: Issue 7

57160 Fitting and insertion of pessary or other intravaginal support device ♀

FRVU 1.37 NFRVU 2.24 GLOBAL 000 MUE 1

MOD 22, 47, 51, 52, 53, 58, 63, 73, 74, 76, 77, 78, 79, 99, AQ, AR, CR, ET, GA, GC, GJ, GR, KX, PD, Q5, Q6, QJ

ASC PI: P3 ASC Sep. Pay: Yes APC SI: T APC: 5411

CPT® Asst: JUL 2019; Vol 29: Issue 7, MAY 2010; Vol 20: Issue 5, JUN 2000; Vol 10: Issue 6

57170 Diaphragm or cervical cap fitting with instructions ♀

FRVU 1.43 NFRVU 2.36 GLOBAL 000 MUE 1

MOD 22, 51, 52, 53, 58, 63, 73, 74, 76, 77, 78, 79, 80, 81, 82, 99, AQ, AR, AS, CR, ET, FP, GA, GC, GJ, GR, KX, PD, Q5, Q6, QJ

ASC PI: P3 ASC Sep. Pay: Yes APC SI: T APC: 5411

CPT® Asst: JUL 2019; Vol 29: Issue 7

57180 Introduction of any hemostatic agent or pack for spontaneous or traumatic nonobstetrical vaginal hemorrhage (separate procedure) ♀

FRVU 3.66 NFRVU 6.04 GLOBAL 010 MUE 1

MOD 22, 47, 51, 52, 53, 54, 55, 56, 58, 59, 63, 73, 74, 76, 77, 78, 79, 99, AQ, AR, CR, ET, GA, GC, GJ, GR, KX, PD, Q5, Q6, QJ, XE, XP, XS, XU

ASC PI: A2 ASC Sep. Pay: Yes APC SI: T APC: 5411

CPT® Asst: JUL 2019; Vol 29: Issue 7, NOV 2007; Vol 17: Issue 11

Repair Procedures on the Vagina (57200-57335)

57200 Colporrhaphy, suture of injury of vagina (nonobstetrical) MIPS ♀

FRVU 9.98 NFRVU 9.98 GLOBAL 090 MUE 1

MOD 22, 47, 51, 52, 53, 54, 55, 56, 58, 59, 62, 63, 73, 74, 76, 77, 78, 79, 80, 81, 82, 99, AQ, AR, AS, CR, ET, GA, GC, GJ, GR, KX, PD, Q5, Q6, QJ, XE, XP, XS, XU

57210 Colpoperineorrhaphy, suture of injury of vagina and/or perineum (nonobstetrical) MIPS ♀

FRVU 11.83 NFRVU 11.83 GLOBAL 090 MUE 1

MOD 22, 47, 51, 52, 53, 54, 55, 56, 58, 59, 62, 63, 73, 74, 76, 77, 78, 79, 80, 81, 82, 99, AQ, AR, AS, CR, ET, GA, GC, GJ, GR, KX, PD, Q5, Q6, QJ, XE, XP, XS, XU

ASC PI: A2 ASC Sep. Pay: Yes APC SI: J1 APC: 5414

CPT® Asst: JUL 2019; Vol 29: Issue 7

57220 Plastic operation on urethral sphincter, vaginal approach (eg, Kelly urethral plication) ♀

FRVU 10.42 NFRVU 10.42 GLOBAL 090 MUE 1

MOD 22, 47, 51, 52, 53, 54, 55, 56, 58, 59, 62, 63, 73, 74, 76, 77, 78, 79, 80, 81, 82, 99, AQ, AR, AS, CR, ET, GA, GC, GJ, GR, KX, PD, Q5, Q6, QJ, XE, XP, XS, XU

ASC PI: A2 ASC Sep. Pay: Yes APC SI: J1 APC: 5415

CPT® Asst: JUL 2019; Vol 29: Issue 7

57230 Plastic repair of urethrocele ♀

FRVU 12.65 NFRVU 12.65 GLOBAL 090 MUE 1

MOD 22, 47, 51, 52, 53, 54, 55, 56, 58, 59, 62, 63, 73, 74, 76, 77, 78, 79, 80, 81, 82, 99, AQ, AR, AS, CR, ET, GA, GC, GJ, GR, KX, PD, Q5, Q6, QJ, XE, XP, XS, XU

ASC PI: A2 ASC Sep. Pay: Yes APC SI: J1 APC: 5414

CPT® Asst: JUL 2019; Vol 29: Issue 7

57240 Anterior colporrhaphy, repair of cystocele with or without repair of urethrocele, including cystourethroscopy, when performed MIPS ♀

FRVU 18.41 NFRVU 18.41 GLOBAL 090 MUE 1

MOD 22, 47, 51, 52, 53, 54, 55, 56, 58, 59, 62, 63, 73, 74, 76, 77, 78, 79, 80, 81, 82, 99, AQ, AR, AS, CR, ET, GA, GC, GJ, GR, KX, PD, Q5, Q6, QJ, XE, XP, XS, XU

ASC PI: A2 ASC Sep. Pay: Yes APC SI: J1 APC: 5415

CPT® Asst: JUL 2019; Vol 29: Issue 7, JUN 2010; Vol 20: Issue 6, JUN 2002; Vol 12: Issue 6

57250 Posterior colporrhaphy, repair of rectocele with or without perineorrhaphy MIPS ♀

FRVU 18.50 NFRVU 18.50 GLOBAL 090 MUE 1

MOD 22, 47, 51, 52, 53, 54, 55, 56, 58, 59, 62, 63, 73, 74, 76, 77, 78, 79, 80, 81, 82, 99, AQ, AR, AS, CR, ET, GA, GC, GJ, GR, KX, PD, Q5, Q6, QJ, XE, XP, XS, XU

ASC PI: A2 ASC Sep. Pay: Yes APC SI: J1 APC: 5415

CPT® Asst: JUL 2019; Vol 29: Issue 7, MAY 2011; Vol 21: Issue 5, JUN 2002; Vol 12: Issue 6

57260 Combined anteroposterior colporrhaphy, including cystourethroscopy, when performed MIPS ♀

FRVU 23.36 NFRVU 23.36 GLOBAL 090 MUE 1

MOD 22, 47, 51, 52, 53, 54, 55, 56, 58, 59, 62, 63, 73, 74, 76, 77, 78, 79, 80, 81, 82, 99, AQ, AR, AS, CR, ET, GA, GC, GJ, GR, KX, PD, Q5, Q6, QJ, XE, XP, XS, XU

ASC PI: A2 ASC Sep. Pay: Yes APC SI: J1 APC: 5415

CPT® Asst: JUL 2019; Vol 29: Issue 7, JUN 2010; Vol 20: Issue 6, JUN 2002; Vol 12: Issue 6

● New Code ▲ Revised Code + Add-On Code # Resequenced Code ⚡ FDA Approval Pending ⊖ Modifier 51 Exempt ⚡ Modifier 63 Exempt
 ♀ Female-only Procedure ♂ Male-only Procedure [M] Maternity MIPS Merit-based Incentive Payment System Code
 ★ Telemedicine Code FRVU Facility Total RVU NFRVU Non-facility Total RVU

AAPC Appendix A

New, Revised, and Deleted Codes and Advice for 2025

Publisher's Notice: Effective November 1, 2023, AMA deleted a number of CPT® COVID-19 vaccine codes as part of a larger revision to streamline COVID-19 vaccine coding. They also added administration code 90480 and vaccine codes 91318-91322, and revised code 91304. These changes can be found throughout the Tabular section of this code book and AAPC Appendices A and B.

New Codes

CPT® Code	Description	Advice
Evaluation and Management Services		
99459	Pelvic examination (List separately in addition to code for primary procedure)	CPT® adds +99459 for pelvic examination. You will use this as an add-on code in conjunction with office and outpatient evaluation and management (E/M) codes 99202-99205 and 99212-99215, consult codes 99242-99245, and preventive medicine evaluation codes 99383-99387 and 99393-99397. Effective date of this code: January 1, 2025.
Musculoskeletal System		
22836	Anterior thoracic vertebral body tethering, including thoracoscopy, when performed; up to 7 vertebral segments	CPT® adds 22836 as part of a larger update to codes for vertebral body tethering, which is a method used to rectify scoliosis without fusion. This technique employs a tether, or cord, to apply pressure on the growth plates of the vertebrae on the curve's convex side, thereby restricting their growth. Simultaneously, it permits the growth plates on the curve's concave side to continue expanding. The update revises both 0656T (up to seven segments) and 0657T (eight or more segments) by adding that the codes apply to "anterior lumbar or thoracolumbar" services, which refers to the lower back and the area where the middle and lower back meet. The update adds 0790T for revision, replacement, or removal of this tethering. These changes are connected to the addition of three new Category I codes for anterior thoracic (middle back) vertebral body tethering: 22836 (up to seven segments), 22837 (eight or more segments), and 22838 (revision, replacement, or removal). Effective date of this code: January 1, 2025.
22837	Anterior thoracic vertebral body tethering, including thoracoscopy, when performed; 8 or more vertebral segments	CPT® adds 22837 as part of a larger update to codes for vertebral body tethering, which is a method used to rectify scoliosis without fusion. This technique employs a tether, or cord, to apply pressure on the growth plates of the vertebrae on the curve's convex side, thereby restricting their growth. Simultaneously, it permits the growth plates on the curve's concave side to continue expanding. The update revises both 0656T (up to seven segments) and 0657T (eight or more segments) by adding that the codes apply to "anterior lumbar or thoracolumbar" services, which refers to the lower back and the area where the middle and lower back meet. The update adds 0790T for revision, replacement, or removal of this tethering. These changes are connected to the addition of three new Category I codes for anterior thoracic (middle back) vertebral body tethering: 22836 (up to seven segments), 22837 (eight or more segments), and 22838 (revision, replacement, or removal). Effective date of this code: January 1, 2025.
22838	Revision (eg, augmentation, division of tether), replacement, or removal of thoracic vertebral body tethering, including thoracoscopy, when performed	CPT® adds 22838 as part of a larger update to codes for vertebral body tethering, which is a method used to rectify scoliosis without fusion. This technique employs a tether, or cord, to apply pressure on the growth plates of the vertebrae on the curve's convex side, thereby restricting their growth. Simultaneously, it permits the growth plates on the curve's concave side to continue expanding. The update revises both 0656T (up to seven segments) and 0657T (eight or more segments) by adding that the codes apply to "anterior lumbar or thoracolumbar" services, which refers to the lower back and the area where the middle and lower back meet. The update adds 0790T for revision, replacement, or removal of this tethering. These changes are connected to the addition of three new Category I codes for anterior thoracic (middle back) vertebral body tethering: 22836 (up to seven segments), 22837 (eight or more segments), and 22838 (revision, replacement, or removal). Effective date of this code: January 1, 2025.
27278	Arthrodesis, sacroiliac joint, percutaneous, with image guidance, including placement of intra-articular implant(s) (eg, bone allograft[s], synthetic device[s]), without placement of transfixation device	CPT® adds 27278 as part of a larger update to codes for sacroiliac (SI) joint arthrodesis (fusion). In place of deleted code 0775T, use new code 27278 for percutaneous SI joint arthrodesis with image guidance. The service includes placement of one or more intraarticular implants without placement of a transfixing device. Transfixing the SI joint refers to passing one or more devices, such as surgical wire or screws, through the ilium of the pelvis, across the SI joint, and into the sacrum that is at the base of the spine. CPT® also deletes 0809T, which represented SI joint arthrodesis with transfixing devices and intra-articular implants. Existing code 27279 continues to apply to percutaneous or minimally invasive SI joint arthrodesis with placement of a transfixing device. Effective date of this code: January 1, 2025.

Thank you for your contribution to the Hardship Fund.



Thanks to your book purchase, AAPC will be able to help more members who face financial difficulty.

The AAPCCA Hardship Fund is a financial aid program created to assist our members with:

- ✓ **Maintaining their membership and certification through membership renewal dues, exam prep tools and more**
- ✓ **Registration for national or regional conferences**
- ✓ **Certain local chapter events**

A portion of each book sale goes to helping applicants through their time of need. All awards are based on the availability of funds and the applicant's ability to demonstrate reasonable hardship. We appreciate your contribution and your support for your fellow AAPC members.

To learn more about the Hardship Fund and its efforts or apply for financial assistance, **visit aapc.com**.



2025 Procedural Coding Expert



9 781646 310012

E-Book ISBN: 978-1-646310-012