



Helping Our Members in Need

This book will help raise over \$100,000 for AAPC members in financial hardship.

ICD-10-PCS

EXPERT

Inpatient procedure codes for facilities

2024

Table of Contents

Preface.....	2	Obstetrics 102-10Y	595
Changes for 2024.....	3	Placement-Anatomical Regions 2W0-2W6.....	601
List of Features.....	4	Placement-Anatomical Orifices 2Y0-2Y5	609
Official Conventions and Additional Conventions Specific to This ICD-10-PCS Book	5	Administration 302-3E1	611
ICD-10-PCS Official Guidelines for Coding and Reporting 2024	7	Measurement and Monitoring 4A0-4B0	627
Anatomical Illustrations.....	17	Extracorporeal or Systemic Assistance and Performance 5A0-5A2	633
Approach Table.....	51	Extracorporeal or Systemic Therapies 6A0-6AB	637
ICD-10-PCS Index.....	53	Osteopathic 7W0	641
ICD-10-PCS Tables.....	173	Other Procedures 8C0-8E0	643
Medical and Surgical 001-0YW.....	173	Chiropractic 9WB	647
Central Nervous System and Cranial Nerves 001-00X..	173	Imaging B00-BY4	649
Peripheral Nervous System 012-01X	185	Nuclear Medicine C01-CW7	691
Heart and Great Vessels 021-02Y	195	Radiation Therapy D00-DWY	703
Upper Arteries 031-03W	213	Physical Rehabilitation and Diagnostic Audiology F00-F15	725
Lower Arteries 041-04W	229	Mental Health GZ1-GZJ	743
Upper Veins 051-05W	245	Substance Abuse Treatment HZ2-HZ9	747
Lower Veins 061-06W	257	New Technology X0H-XY0.....	751
Lymphatic and Hemic Systems 072-07Y	269	Nervous System X0H-X0Z	751
Eye 080-08X	281	Cardiovascular System X27-X2V.....	753
Ear, Nose, Sinus 090-09W	295	Gastrointestinal System XD2-XDP	757
Respiratory System 0B1-0BY	311	Hepatobiliary System and Pancreas XF5-XFJ.....	759
Mouth and Throat 0C0-0CX	325	Skin, Subcutaneous Tissue, Fascia, and Breast XHR	761
Gastrointestinal System 0D1-0DY.....	337	Muscles, Tendons, Bursae, and Ligaments XKU	763
Hepatobiliary System and Pancreas 0F1-0FY	357	Bones XNH-XNU.....	765
Endocrine System 0G2-0GW.....	369	Joints XRG-XRR	767
Skin and Breast 0H0-0HX	377	Urinary System XT2.....	769
Subcutaneous Tissue and Fascia 0J0-0JX	393	Male Reproductive System XV5	771
Muscles 0K2-0KX	413	Anatomical Regions XW0-XWH.....	773
Tendons 0L2-0LX	425	Physiological Systems XXE.....	779
Bursae and Ligaments 0M2-0MX.....	437	Extracorporeal XY0	781
Head and Facial Bones 0N2-0NW	453	Appendix A: Root Operations Definitions	783
Upper Bones 0P2-0PW	465	Appendix B: Body Part Key	789
Lower Bones 0Q2-0QW	479	Appendix C: Device Key	809
Upper Joints 0R2-0RW	491	Appendix D: Device Aggregation Table.....	819
Lower Joints 0S2-0SW	507	Appendix E: Character Meaning.....	823
Urinary System 0T1-0TY	523	Appendix F: Substance Key	899
Female Reproductive System 0U1-0UY	535	Appendix G: Combination Clusters.....	903
Male Reproductive System 0V1-0VY	551	Appendix H: New/Revised/Deleted Codes for 2024....	927
Anatomical Regions, General 0W0-0WY	567		
Anatomical Regions, Upper Extremities 0X0-0XY	579		
Anatomical Regions, Lower Extremities 0Y0-0YW	587		

Official Conventions and Additional Conventions Specific to This ICD-10-PCS Book

This code book includes the procedure code set from the International Classification of Diseases, 10th Revision, Procedure Coding System (ICD-10-PCS). Hospitals and third-party payers use these codes to classify inpatient procedures.

Official Conventions

Index

Refer to the ICD-10-PCS Index to identify the appropriate Tables in the code book. The Index mirrors the structure of the Tables, so it follows a consistent pattern of organization and use of hierarchies. The Index is organized as an alphabetic lookup.

Two types of main terms are listed in the Index:

- Those based on the value of the third character, such as a root operations (excision, insertion)
- Those listing common procedures, body parts, technology, and drugs

Main Terms

For the Medical and Surgical and related sections, the root operation values are used as main terms in the Index. In other sections, the values representing the general type of procedure performed, such as nuclear medicine or imaging type, are listed as main terms.

For the Medical and Surgical and related sections, values such as Excision, Bypass, and Transplantation are included as main terms in the Index. The applicable body system entries are listed beneath the main term and refer to a specific table. For the ancillary sections, values such as Fluoroscopy and Positron Emission Tomography, are listed as main terms.

To find the code to cross-reference to the Tables, search for the root operation for the procedure in the Index, followed by

the subterm for the anatomic site or the subterm that further describes the procedure. Locate the partial code, and cross-reference it to the Table that matches the first three characters of the code.

'See' Reference

The *see* reference directs you to go elsewhere in the Index to find the root operation that you need.

'Use' Reference

The *use* reference directs you to a character value selection as an additional reference.

Tables

The Tables are organized in alphanumeric order in a series by Section, which is the first character of a code. Tables that begin with 0 to 9 are listed first, then Tables beginning with B-D, and then finally letters F-X.

The same convention is followed within each Table for the second through the seventh characters — numeric values in order first, followed by alphabetical values.

The Medical and Surgical section (first character 0) is organized by body system values. Each body system subdivision in the Medical and Surgical section contains Tables that list the valid root operations for that body system. These are the root operation Tables that form the system. These Tables provide the valid choices of values available to construct a code.

The root operation Tables consist of four columns and a varying number of rows, as in the following example of the root operation Insertion, in the Subcutaneous Tissue and Fascia body system.

Section: 0 Medical and Surgical

Body System: J Subcutaneous Tissue and Fascia

Operation: H Insertion

Body Part	Approach	Device	Qualifier
Character 4	Character 5	Character 6	Character 7
S Subcutaneous Tissue and Fascia, Head and Neck V Subcutaneous Tissue and Fascia, Upper Extremity W Subcutaneous Tissue and Fascia, Lower Extremity	0 Open 3 Percutaneous	1 Radioactive Element 3 Infusion Device Y Other Device	Z No Qualifier
T Subcutaneous Tissue and Fascia, Trunk	0 Open 3 Percutaneous	1 Radioactive Element 3 Infusion Device V Infusion Device, Pump Y Other Device	Z No Qualifier

Conventions

A1

ICD-10-PCS codes are composed of seven characters. Each character is an axis of classification that specifies information about the procedure performed. Within a defined code range, a character specifies the same type of information in that axis of classification.

Example: The fifth axis of classification specifies the approach in sections 0 through 4 and 7 through 9 of the system.

A2

One of 34 possible values can be assigned to each axis of classification in the seven-character code: they are the numbers 0 through 9 and the alphabet (except I and O because they are easily confused with the numbers 1 and 0). The number of unique values used in an axis of classification differs as needed.

Example: Where the fifth axis of classification specifies the approach, seven different approach values are currently used to specify the approach.

A3

The valid values for an axis of classification can be added to as needed.

Example: If a significantly distinct type of device is used in a new procedure, a new device value can be added to the system.

A4

As with words in their context, the meaning of any single value is a combination of its axis of classification and any preceding values on which it may be dependent.

Example: The meaning of a body part value in the Medical and Surgical section is always dependent on the body system value. The body part value 0 in the Central Nervous body system specifies Brain and the body part value 0 in the Peripheral Nervous body system specifies Cervical Plexus.

A5

As the system is expanded to become increasingly detailed, over time more values will depend on preceding values for their meaning.

Example: In the Lower Joints body system, the device value 3 in the root operation Insertion specifies Infusion Device and the device value 3 in the root operation Replacement specifies Ceramic Synthetic Substitute.

A6

The purpose of the alphabetic index is to locate the appropriate table that contains all information necessary to construct a procedure code. The PCS Tables should always be consulted to find the most appropriate valid code.

A7

It is not required to consult the index first before proceeding to the tables to complete the code. A valid code may be chosen directly from the tables.

A8

All seven characters must be specified to be a valid code. If the documentation is incomplete for coding purposes, the physician should be queried for the necessary information.

A9

Within a PCS table, valid codes include all combinations of choices in characters 4 through 7 contained in the same row of the table. In the example below, 0JHT3VZ is a valid code, and 0JHW3VZ is not a valid code.

A10

“And,” when used in a code description, means “and/or,” except when used to describe a combination of multiple body parts for which separate values exist for each body part (e.g., Skin and Subcutaneous Tissue used as a qualifier, where there are separate body part values for “Skin” and “Subcutaneous Tissue”).

Example: Lower Arm and Wrist Muscle means lower arm and/or wrist muscle.

A11

Many of the terms used to construct PCS codes are defined within the system. It is the coder’s responsibility to determine what the documentation in the medical record equates to in the PCS definitions. The physician is not expected to use the terms used in PCS code descriptions, nor is the coder required to query the physician when the correlation between the documentation and the defined PCS terms is clear.

Example: When the physician documents “partial resection” the coder can independently correlate “partial resection” to the root operation Excision without querying the physician for clarification.

Section: 0 Medical and Surgical

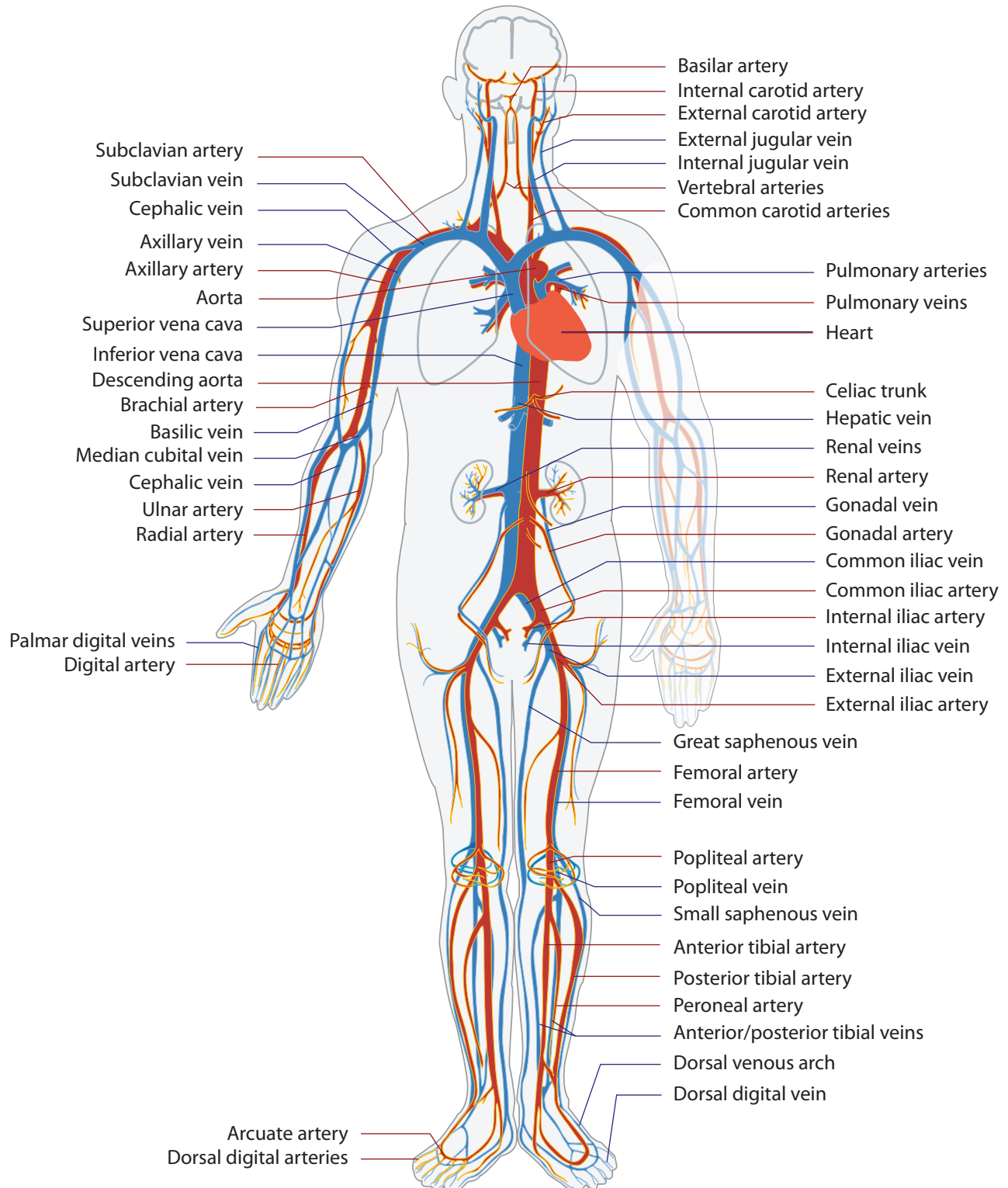
Body System: J Subcutaneous Tissue and Fascia

Operation: H Insertion: Putting in a nonbiological appliance that monitors, assists, performs, or prevents a physiological function but does not physically take the place of a body part

Body Part	Approach	Device	Qualifier
S Subcutaneous Tissue and Fascia, Head and Neck	0 Open	1 Radioactive Element	Z No Qualifier
V Subcutaneous Tissue and Fascia, Upper Extremity	3 Percutaneous	3 Infusion Device	
W Subcutaneous Tissue and Fascia, Lower Extremity		Y Other Device	
T Subcutaneous Tissue and Fascia, Trunk	0 Open	1 Radioactive Element	Z No Qualifier
	3 Percutaneous	3 Infusion Device	
		V Infusion Pump	
		Y Other Device	

Anatomical Illustrations

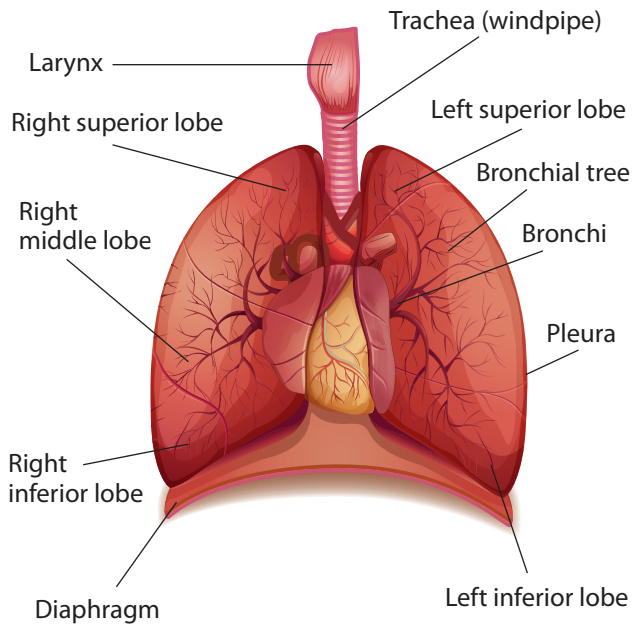
Circulatory System — Arteries and Veins



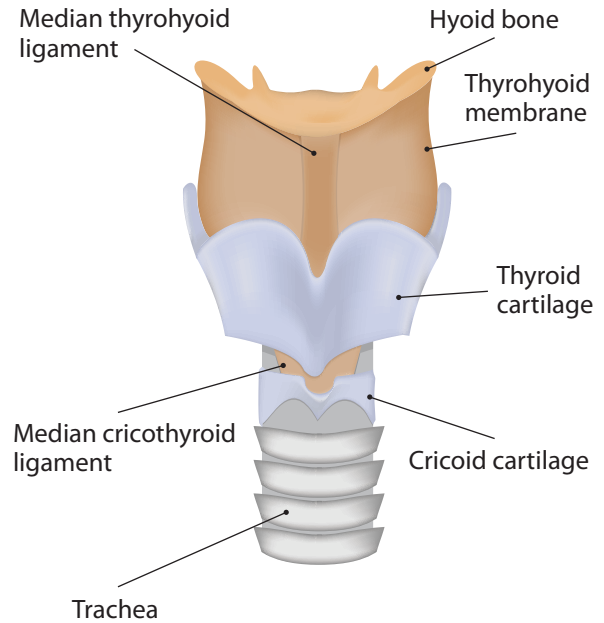
Title: Circulatory System Labels Biology Diagram, **License:** CC0 Creative Commons (Free for commercial use No attribution required), **URL link:** <https://pixabay.com/en/circulatory-system-labels-biology-41523/>

Respiratory System

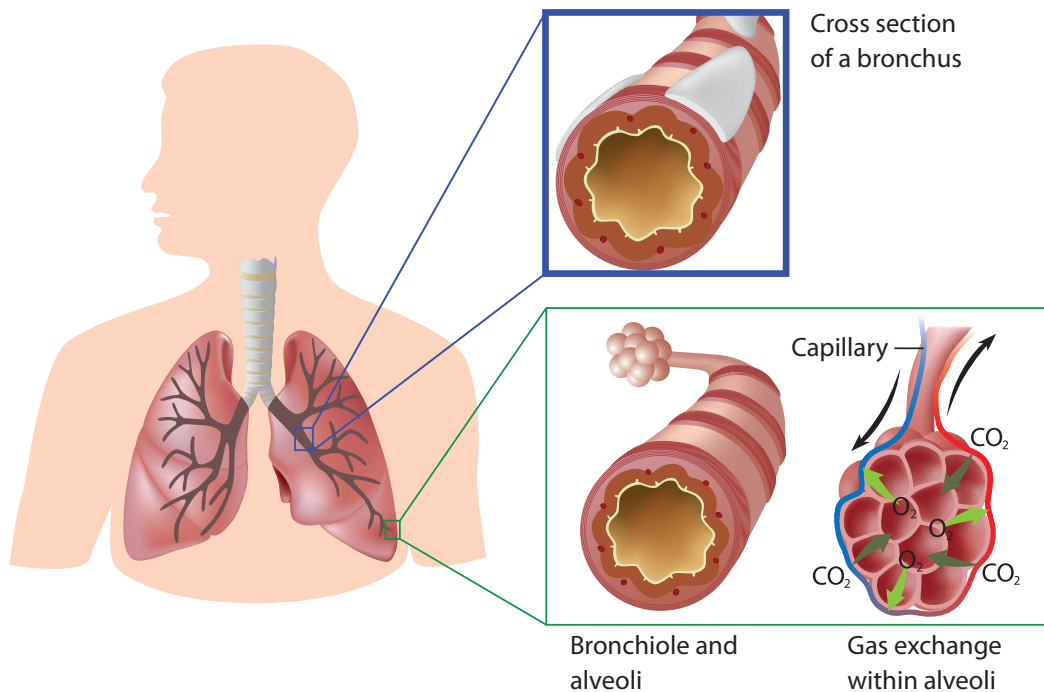
Lung Anatomy



Larynx Anatomy



Respiratory System — Lung Function



ICD-10-PCS Index

3

3f (Aortic) Bioprosthesis valve
use Zooplastic Tissue in Heart and Great Vessels

A

Abdominal aortic plexus
use Abdominal Sympathetic Nerve

Abdominal cavity
use Peritoneal Cavity

Abdominal esophagus
use Esophagus, Lower

Abdominohysterectomy
see Resection, Uterus 0UT9

Abdominoplasty
see Alteration, Abdominal Wall 0W0F
see Repair, Abdominal Wall 0WQF
see Supplement, Abdominal Wall 0WUF

Abductor hallucis muscle
use Foot Muscle, Right
use Foot Muscle, Left

ABECMA®
use Idecabtagene Vicleucel
Immunotherapy

AbioCor® Total Replacement Heart
use Synthetic Substitute

Ablation
see Control bleeding in
see Destruction

Abortion
Products of Conception 10A0
Abortifacient 10A07ZX
Laminaria 10A07ZW
Vacuum 10A07Z6

Abrasion
see Extraction

Absolute Pro Vascular (OTW) Self-Expanding Stent System
use Intraluminal Device

Accelerate PhenoTest™ BC XXE5XN6

Accessory cephalic vein
use Cephalic Vein, Right
use Cephalic Vein, Left

Accessory obturator nerve
use Lumbar Plexus

Accessory phrenic nerve
use Phrenic Nerve

Accessory spleen
use Spleen

Acculink (RX) Carotid Stent System
use Intraluminal Device

Acellular Hydrated Dermis
use Nonautologous Tissue Substitute

Acetabular cup
use Liner in Lower Joints

Acetabulectomy
see Excision, Lower Bones 0QB
see Resection, Lower Bones 0QT

Acetabulofemoral joint
use Hip Joint, Right
use Hip Joint, Left

Acetabuloplasty
see Repair, Lower Bones 0QQ
see Replacement, Lower Bones 0QR
see Supplement, Lower Bones 0QU

Achilles tendon
use Lower Leg Tendon, Right
use Lower Leg Tendon, Left

Achillorrhaphy
see Repair, Tendons 0LQ

Achillotenotomy, achillotomy

see Division, Tendons 0L8
see Drainage, Tendons 0L9

Acoustic Pulse Thrombolysis
see Fragmentation, Artery

Acromioclavicular ligament
use Shoulder Bursa and Ligament, Right
use Shoulder Bursa and Ligament, Left

Acromion (process)
use Scapula, Right
use Scapula, Left

Acromionectomy
see Excision, Upper Joints 0RB
see Resection, Upper Joints 0RT

Acromioplasty
see Repair, Upper Joints 0RQ
see Replacement, Upper Joints 0RR
see Supplement, Upper Joints 0RU

ACTEMRA®
use Tocilizumab

Activa PC neurostimulator
use Stimulator Generator, Multiple Array
in 0JH

Activa RC neurostimulator
use Stimulator Generator, Multiple Array
Rechargeable in 0JH

Activa SC neurostimulator
use Stimulator Generator, Single Array
in 0JH

Activities of Daily Living Assessment F02

Activities of Daily Living Treatment F08

ACUITY™ Steerable Lead
use Cardiac Lead, Pacemaker in 02H
use Cardiac Lead, Defibrillator in 02H

Acupuncture
Breast
Anesthesia 8E0H300
No Qualifier 8E0H30Z
Integumentary System
Anesthesia 8E0H300
No Qualifier 8E0H30Z

Adductor brevis muscle
use Upper Leg Muscle, Right
use Upper Leg Muscle, Left

Adductor hallucis muscle
use Foot Muscle, Right
use Foot Muscle, Left

Adductor longus muscle
use Upper Leg Muscle, Right
use Upper Leg Muscle, Left

Adductor magnus muscle
use Upper Leg Muscle, Right
use Upper Leg Muscle, Left

Adenohypophysis
use Pituitary Gland

Adenoidectomy
see Excision, Adenoids 0CBQ
see Resection, Adenoids 0CTQ

Adenoidotomy
see Drainage, Adenoids 0C9Q

Adhesiolysis
see Release

Administration
Blood products see Transfusion
Other substance see Introduction of substance in or on

Adrenalectomy
see Excision, Endocrine System 0GB
see Resection, Endocrine System 0GT

Adrenalorrhaphy
see Repair, Endocrine System 0GQ

Adrenaltomy
see Drainage, Endocrine System 0G9

Advancement
see Reposition
see Transfer

Advisa (MRI)
use Pacemaker, Dual Chamber in 0JH

afami-cel
use Afamitresgene Autoleucel
Immunotherapy

Afamitresgene Autoleucel Immunotherapy XW0

AFX® Endovascular AAA System
use Intraluminal Device

Aidoc Briefcase for PE (pulmonary embolism) XXE3X27

AIGISRx Antibacterial Envelope
use Anti-Infective Envelope

Alar ligament of axis
use Head and Neck Bursa and Ligament

Alfapump® system
use Other Device

Alfieri Stitch Valvuloplasty
see Restriction, Valve, Mitral 02VG

Alimentation
see Introduction of substance in or on

ALPPS (Associating liver partition and portal vein ligation)
see Division, Hepatobiliary System and Pancreas 0F8
see Resection, Hepatobiliary System and Pancreas 0FT

Alteration
Abdominal Wall 0W0F
Ankle Region
Left 0Y0L
Right 0Y0K
Arm
Lower
Left 0X0F
Right 0X0D
Upper
Left 0X09
Right 0X08

Axilla
Left 0X05
Right 0X04

Back
Lower 0W0L
Upper 0W0K

Breast
Bilateral 0H0V
Left 0H0U
Right 0H0T

Buttock
Left 0Y01
Right 0Y00

Chest Wall 0W08

Ear
Bilateral 0902
Left 0901
Right 0900

Elbow Region
Left 0X0C
Right 0X0B

Extremity
Lower
Left 0Y0B
Right 0Y09

Upper
Left 0X07
Right 0X06

Eyelid
Lower
Left 080R
Right 080Q

Change device in or on — continued

Genital Tract, Female 2Y04X5Z
 Hand
 Left 2W0FX
 Right 2W0EX
 Head 2W00X
 Inguinal Region
 Left 2W07X
 Right 2W06X
 Leg
 Lower
 Left 2W0RX
 Right 2W0QX
 Upper
 Left 2W0PX
 Right 2W0NX
 Mouth and Pharynx 2Y00X5Z
 Nasal 2Y01X5Z
 Neck 2W02X
 Thumb
 Left 2W0HX
 Right 2W0GX
 Toe
 Left 2W0VX
 Right 2W0UX
 Urethra 2Y05X5Z
Chemoembolization
 see Introduction of substance in or on
Chemotherapy, Skin 3E00XTZ
Chemotherapy, Infusion for cancer
 see Introduction of substance in or on
Chest compression (CPR), external
 Manual 5A12012
 Mechanical 5A1221J
Chest x-ray
 see Plain Radiography, Chest BW03
Chiropractic Manipulation
 Abdomen 9WB9X
 Cervical 9WB1X
 Extremities
 Lower 9WB6X
 Upper 9WB7X
 Head 9WB0X
 Lumbar 9WB3X
 Pelvis 9WB5X
 Rib Cage 9WB8X
 Sacrum 9WB4X
 Thoracic 9WB2X
Choana
 see Nasopharynx
Cholangiogram
 see Plain Radiography, Hepatobiliary System and Pancreas BF0
 see Fluoroscopy, Hepatobiliary System and Pancreas BF1
Cholecystectomy
 see Excision, Gallbladder 0FB4
 see Resection, Gallbladder 0FT4
Cholecystojejunostomy
 see Bypass, Hepatobiliary System and Pancreas 0F1
 see Drainage, Hepatobiliary System and Pancreas 0F9
Cholecystopexy
 see Repair, Gallbladder 0FQ4
 see Reposition, Gallbladder 0FS4
Cholecystoscopy 0FJ44ZZ
Cholecystostomy
 see Bypass, Gallbladder 0F14
 see Drainage, Gallbladder 0F94
Cholecystotomy
 see Drainage, Gallbladder 0F94
Choledochectomy
 see Excision, Hepatobiliary System and Pancreas 0FB
 see Resection, Hepatobiliary System and Pancreas 0FT

Choledocholithotomy
 see Extirpation, Duct, Common Bile 0FC9
Choledochoplasty
 see Repair, Hepatobiliary System and Pancreas 0FQ
 see Replacement, Hepatobiliary System and Pancreas 0FR
 see Supplement, Hepatobiliary System and Pancreas 0FU
Choledochoscopy 0FJB8ZZ
Choledochotomy
 see Drainage, Hepatobiliary System and Pancreas 0F9
Cholelithotomy
 see Extirpation, Hepatobiliary System and Pancreas 0FC
Chondrectomy
 see Excision, Upper Joints 0RB
 see Excision, Lower Joints 0SB
 Knee *see* Excision, Lower Joints 0SB
 Semilunar cartilage *see* Excision, Lower Joints 0SB
Chondroglossus muscle
 use Tongue, Palate, Pharynx Muscle
Chorda tympani
 use Facial Nerve
Chordotomy
 see Division, Central Nervous System and Cranial Nerves 008
Choroid plexus
 use Cerebral Ventricle
Choroidectomy
 see Excision, Eye 08B
 see Resection, Eye 08T
Ciliary body
 use Eye, Right
 use Eye, Left
Ciliary ganglion
 use Head and Neck Sympathetic Nerve
cilta-cel
 use Ciltacabtagene Autoleucel
Ciltacabtagene Autoleucel XW0
Circle of Willis
 use Intracranial Artery
Circumcision 0VTTXZZ
Circumflex iliac artery
 use Femoral Artery, Right
 use Femoral Artery, Left
CivaSheet®
 use Radioactive Element
CivaSheet® Brachytherapy
 see Brachytherapy with qualifier
 Unidirectional Source
 see Insertion with device Radioactive Element
Clamp and rod internal fixation system (CRIF)
 use Internal Fixation Device in Upper Bones
 use Internal Fixation Device in Lower Bones
Clamping
 see Occlusion
Clastrum
 use Basal Ganglia
Claviclectomy
 see Excision, Upper Bones 0PB
 see Resection, Upper Bones 0PT
Claviculotomy
 see Division, Upper Bones 0P8
 see Drainage, Upper Bones 0P9
Clipping, aneurysm
 see Occlusion using Extraluminal Device
 see Restriction using Extraluminal Device
Clitorectomy, clitoridectomy
 see Excision, Clitoris 0UBJ
 see Resection, Clitoris 0UTJ
Clolar
 use Clofarabine

Closure
 see Occlusion
 see Repair
Clysis
 see Introduction of substance in or on
Coagulation
 see Destruction
Coagulation Factor Xa, Inactivated XW0
Coagulation Factor Xa, (Recombinant) Inactivated
 use Coagulation Factor Xa, Inactivated
COALESCE® radiolucent interbody fusion device
 use Interbody Fusion Device in Upper Joints
 use Interbody Fusion Device in Lower Joints
CoAxia NeuroFlo catheter
 use Intraluminal Device
Cobalt/chromium head and polyethylene socket
 use Synthetic Substitute, Metal on Polyethylene in OSR
Cobalt/chromium head and socket
 use Synthetic Substitute, Metal in OSR
Coccygeal body
 use Coccygeal Glomus
Coccygeus muscle
 use Trunk Muscle, Right
 use Trunk Muscle, Left
Cochlea
 use Inner Ear, Right
 use Inner Ear, Left
Cochlear implant (CI), multiple channel (electrode)
 use Hearing Device, Multiple Channel
 Cochlear Prosthesis in 09H
Cochlear implant (CI), single channel (electrode)
 use Hearing Device, Single Channel
 Cochlear Prosthesis in 09H
Cochlear Implant Treatment F0BZ0
Cochlear nerve
 use Acoustic Nerve
COGNIS® CRT-D
 use Cardiac Resynchronization Defibrillator Pulse Generator in 0JH
COHERE® radiolucent interbody fusion device
 use Interbody Fusion Device in Upper Joints
 use Interbody Fusion Device in Lower Joints
Colectomy
 see Excision, Gastrointestinal System 0DB
 see Resection, Gastrointestinal System 0DT
Collapse
 see Occlusion
Collection from
 Breast, Breast Milk 8E0HX62
 Indwelling Device
 Circulatory System
 Blood 8C02X6K
 Other Fluid 8C02X6L
 Nervous System
 Cerebrospinal Fluid 8C01X6J
 Other Fluid 8C01X6L
 Integumentary System, Breast
 Milk 8E0HX62
 Reproductive System, Male,
 Sperm 8E0VX63
Colocentesis
 see Drainage, Gastrointestinal System 0D9
Colofixation
 see Repair, Gastrointestinal System 0DQ
 see Reposition, Gastrointestinal System 0DS

ICD-10-PCS Tables

Medical and Surgical 001-0YW

Central Nervous System and Cranial Nerves 001-00X

0 Medical and Surgical

0 Central Nervous System and Cranial Nerves

1 Bypass: Altering the route of passage of the contents of a tubular body part

Body Part Character 4	Approach Character 5	Device Character 6	Qualifier Character 7
6 Cerebral Ventricle	0 Open 3 Percutaneous 4 Percutaneous Endoscopic	7 Autologous Tissue Substitute J Synthetic Substitute K Nonautologous Tissue Substitute	0 Nasopharynx 1 Mastoid Sinus 2 Atrium 3 Blood Vessel 4 Pleural Cavity 5 Intestine 6 Peritoneal Cavity 7 Urinary Tract 8 Bone Marrow A Subgaleal Space B Cerebral Cisterns
6 Cerebral Ventricle	0 Open 3 Percutaneous 4 Percutaneous Endoscopic	Z No Device	B Cerebral Cisterns
U Spinal Canal	0 Open 3 Percutaneous 4 Percutaneous Endoscopic	7 Autologous Tissue Substitute J Synthetic Substitute K Nonautologous Tissue Substitute	2 Atrium 4 Pleural Cavity 6 Peritoneal Cavity 7 Urinary Tract 9 Fallopian Tube

0 Medical and Surgical

0 Central Nervous System and Cranial Nerves

2 Change: Taking out or off a device from a body part and putting back an identical or similar device in or on the same body part without cutting or puncturing the skin or a mucous membrane

Body Part Character 4	Approach Character 5	Device Character 6	Qualifier Character 7
0 Brain E Cranial Nerve U Spinal Canal	X External	0 Drainage Device Y Other Device	Z No Qualifier

0 Medical and Surgical**0 Central Nervous System and Cranial Nerves****S Reposition:** Moving to its normal location, or other suitable location, all or a portion of a body part

Body Part	Approach	Device	Qualifier
Character 4	Character 5	Character 6	Character 7
F Olfactory Nerve G Optic Nerve H Oculomotor Nerve J Trochlear Nerve K Trigeminal Nerve L Abducens Nerve M Facial Nerve N Acoustic Nerve P Glossopharyngeal Nerve Q Vagus Nerve R Accessory Nerve S Hypoglossal Nerve W Cervical Spinal Cord X Thoracic Spinal Cord Y Lumbar Spinal Cord	0 Open 3 Percutaneous 4 Percutaneous Endoscopic	Z No Device	Z No Qualifier

0 Medical and Surgical**0 Central Nervous System and Cranial Nerves****T Resection:** Cutting out or off, without replacement, all of a body part

Body Part	Approach	Device	Qualifier
Character 4	Character 5	Character 6	Character 7
7 Cerebral Hemisphere	0 Open 3 Percutaneous 4 Percutaneous Endoscopic	Z No Device	Z No Qualifier

0 Medical and Surgical**0 Central Nervous System and Cranial Nerves****U Supplement:** Putting in or on biological or synthetic material that physically reinforces and/or augments the function of a portion of a body part

Body Part	Approach	Device	Qualifier
Character 4	Character 5	Character 6	Character 7
1 Cerebral Meninges 2 Dura Mater 6 Cerebral Ventricle F Olfactory Nerve G Optic Nerve H Oculomotor Nerve J Trochlear Nerve K Trigeminal Nerve L Abducens Nerve M Facial Nerve N Acoustic Nerve P Glossopharyngeal Nerve Q Vagus Nerve R Accessory Nerve S Hypoglossal Nerve T Spinal Meninges	0 Open 3 Percutaneous 4 Percutaneous Endoscopic	7 Autologous Tissue Substitute J Synthetic Substitute K Nonautologous Tissue Substitute	Z No Qualifier

Heart and Great Vessels 021-02Y

0 Medical and Surgical

2 Heart and Great Vessels

1 Bypass: Altering the route of passage of the contents of a tubular body part

Body Part Character 4	Approach Character 5	Device Character 6	Qualifier Character 7
0 Coronary Artery, One Artery HAC 1 Coronary Artery, Two Arteries HAC 2 Coronary Artery, Three Arteries HAC 3 Coronary Artery, Four or More Arteries HAC	0 Open	8 Zooplastic Tissue 9 Autologous Venous Tissue A Autologous Arterial Tissue J Synthetic Substitute K Nonautologous Tissue Substitute	3 Coronary Artery 8 Internal Mammary, Right 9 Internal Mammary, Left C Thoracic Artery F Abdominal Artery W Aorta
0 Coronary Artery, One Artery HAC 1 Coronary Artery, Two Arteries HAC 2 Coronary Artery, Three Arteries HAC 3 Coronary Artery, Four or More Arteries HAC	0 Open	Z No Device	3 Coronary Artery 8 Internal Mammary, Right 9 Internal Mammary, Left C Thoracic Artery F Abdominal Artery
0 Coronary Artery, One Artery 1 Coronary Artery, Two Arteries 2 Coronary Artery, Three Arteries 3 Coronary Artery, Four or More Arteries	3 Percutaneous	4 Intraluminal Device, Drug-eluting D Intraluminal Device	4 Coronary Vein
0 Coronary Artery, One Artery 1 Coronary Artery, Two Arteries 2 Coronary Artery, Three Arteries 3 Coronary Artery, Four or More Arteries	4 Percutaneous Endoscopic	4 Intraluminal Device, Drug-eluting D Intraluminal Device	4 Coronary Vein
0 Coronary Artery, One Artery HAC 1 Coronary Artery, Two Arteries HAC 2 Coronary Artery, Three Arteries HAC 3 Coronary Artery, Four or More Arteries HAC	4 Percutaneous Endoscopic	8 Zooplastic Tissue 9 Autologous Venous Tissue A Autologous Arterial Tissue J Synthetic Substitute K Nonautologous Tissue Substitute	3 Coronary Artery 8 Internal Mammary, Right 9 Internal Mammary, Left C Thoracic Artery F Abdominal Artery W Aorta
0 Coronary Artery, One Artery HAC 1 Coronary Artery, Two Arteries HAC 2 Coronary Artery, Three Arteries HAC 3 Coronary Artery, Four or More Arteries HAC	4 Percutaneous Endoscopic	Z No Device	3 Coronary Artery 8 Internal Mammary, Right 9 Internal Mammary, Left C Thoracic Artery F Abdominal Artery
6 Atrium, Right	0 Open 4 Percutaneous Endoscopic	8 Zooplastic Tissue 9 Autologous Venous Tissue A Autologous Arterial Tissue J Synthetic Substitute K Nonautologous Tissue Substitute	P Pulmonary Trunk Q Pulmonary Artery, Right R Pulmonary Artery, Left
6 Atrium, Right	0 Open 4 Percutaneous Endoscopic	Z No Device	7 Atrium, Left P Pulmonary Trunk Q Pulmonary Artery, Right R Pulmonary Artery, Left

021 continued on next page

LC Limited Coverage **NC** Noncovered **HAC** HAC-associated Procedure **CC** Combination Cluster - See Appendix G for code lists

Non-OR-Affecting MS-DRG Assignment **New/Revised Text in Orange** Male Female

0 Medical and Surgical

3 Upper Arteries

031 continued from previous page

1 Bypass: Altering the route of passage of the contents of a tubular body part

Body Part Character 4	Approach Character 5	Device Character 6	Qualifier Character 7
7 Brachial Artery, Right	0 Open	9 Autologous Venous Tissue A Autologous Arterial Tissue J Synthetic Substitute K Nonautologous Tissue Substitute Z No Device	0 Upper Arm Artery, Right 3 Lower Arm Artery, Right D Upper Arm Vein F Lower Arm Vein V Superior Vena Cava W Lower Extremity Vein
7 Brachial Artery, Right	3 Percutaneous	Z No Device	F Lower Arm Vein
8 Brachial Artery, Left	0 Open	9 Autologous Venous Tissue A Autologous Arterial Tissue J Synthetic Substitute K Nonautologous Tissue Substitute Z No Device	1 Upper Arm Artery, Left 4 Lower Arm Artery, Left D Upper Arm Vein F Lower Arm Vein V Superior Vena Cava W Lower Extremity Vein
8 Brachial Artery, Left	3 Percutaneous	Z No Device	F Lower Arm Vein
9 Ulnar Artery, Right B Radial Artery, Right	0 Open	9 Autologous Venous Tissue A Autologous Arterial Tissue J Synthetic Substitute K Nonautologous Tissue Substitute Z No Device	3 Lower Arm Artery, Right F Lower Arm Vein
9 Ulnar Artery, Right B Radial Artery, Right	3 Percutaneous	Z No Device	F Lower Arm Vein
A Ulnar Artery, Left C Radial Artery, Left	0 Open	9 Autologous Venous Tissue A Autologous Arterial Tissue J Synthetic Substitute K Nonautologous Tissue Substitute Z No Device	4 Lower Arm Artery, Left F Lower Arm Vein
A Ulnar Artery, Left C Radial Artery, Left	3 Percutaneous	Z No Device	F Lower Arm Vein
G Intracranial Artery S Temporal Artery, Right T Temporal Artery, Left	0 Open	9 Autologous Venous Tissue A Autologous Arterial Tissue J Synthetic Substitute K Nonautologous Tissue Substitute Z No Device	G Intracranial Artery
H Common Carotid Artery, Right J Common Carotid Artery, Left	0 Open	9 Autologous Venous Tissue A Autologous Arterial Tissue J Synthetic Substitute K Nonautologous Tissue Substitute Z No Device	G Intracranial Artery J Extracranial Artery, Right K Extracranial Artery, Left Y Upper Artery
K Internal Carotid Artery, Right L Internal Carotid Artery, Left M External Carotid Artery, Right N External Carotid Artery, Left	0 Open	9 Autologous Venous Tissue A Autologous Arterial Tissue J Synthetic Substitute K Nonautologous Tissue Substitute Z No Device	J Extracranial Artery, Right K Extracranial Artery, Left

Lower Arteries 041-04W

0 Medical and Surgical

4 Lower Arteries

1 Bypass: Altering the route of passage of the contents of a tubular body part

Body Part Character 4	Approach Character 5	Device Character 6	Qualifier Character 7
0 Abdominal Aorta C Common Iliac Artery, Right D Common Iliac Artery, Left	0 Open 4 Percutaneous Endoscopic	9 Autologous Venous Tissue A Autologous Arterial Tissue J Synthetic Substitute K Nonautologous Tissue Substitute Z No Device	0 Abdominal Aorta 1 Celiac Artery 2 Mesenteric Artery 3 Renal Artery, Right 4 Renal Artery, Left 5 Renal Artery, Bilateral 6 Common Iliac Artery, Right 7 Common Iliac Artery, Left 8 Common Iliac Arteries, Bilateral 9 Internal Iliac Artery, Right B Internal Iliac Artery, Left C Internal Iliac Arteries, Bilateral D External Iliac Artery, Right F External Iliac Artery, Left G External Iliac Arteries, Bilateral H Femoral Artery, Right J Femoral Artery, Left K Femoral Arteries, Bilateral Q Lower Extremity Artery R Lower Artery
3 Hepatic Artery 4 Splenic Artery	0 Open 4 Percutaneous Endoscopic	9 Autologous Venous Tissue A Autologous Arterial Tissue J Synthetic Substitute K Nonautologous Tissue Substitute Z No Device	3 Renal Artery, Right 4 Renal Artery, Left 5 Renal Artery, Bilateral
E Internal Iliac Artery, Right F Internal Iliac Artery, Left H External Iliac Artery, Right J External Iliac Artery, Left	0 Open 4 Percutaneous Endoscopic	9 Autologous Venous Tissue A Autologous Arterial Tissue J Synthetic Substitute K Nonautologous Tissue Substitute Z No Device	9 Internal Iliac Artery, Right B Internal Iliac Artery, Left C Internal Iliac Arteries, Bilateral D External Iliac Artery, Right F External Iliac Artery, Left G External Iliac Arteries, Bilateral H Femoral Artery, Right J Femoral Artery, Left K Femoral Arteries, Bilateral P Foot Artery Q Lower Extremity Artery
K Femoral Artery, Right L Femoral Artery, Left	0 Open 4 Percutaneous Endoscopic	9 Autologous Venous Tissue A Autologous Arterial Tissue J Synthetic Substitute K Nonautologous Tissue Substitute Z No Device	H Femoral Artery, Right J Femoral Artery, Left K Femoral Arteries, Bilateral L Popliteal Artery M Peroneal Artery N Posterior Tibial Artery P Foot Artery Q Lower Extremity Artery S Lower Extremity Vein
K Femoral Artery, Right L Femoral Artery, Left	3 Percutaneous	J Synthetic Substitute	Q Lower Extremity Artery S Lower Extremity Vein
M Popliteal Artery, Right N Popliteal Artery, Left	0 Open 4 Percutaneous Endoscopic	9 Autologous Venous Tissue A Autologous Arterial Tissue J Synthetic Substitute K Nonautologous Tissue Substitute Z No Device	L Popliteal Artery M Peroneal Artery P Foot Artery Q Lower Extremity Artery S Lower Extremity Vein

041 continued on next page

0 Medical and Surgical**5 Upper Veins****S Reposition:** Moving to its normal location, or other suitable location, all or a portion of a body part

Body Part	Approach	Device	Qualifier
Character 4	Character 5	Character 6	Character 7
0 Azygos Vein 1 Hemiazygos Vein 3 Innominate Vein, Right 4 Innominate Vein, Left 5 Subclavian Vein, Right 6 Subclavian Vein, Left 7 Axillary Vein, Right 8 Axillary Vein, Left 9 Brachial Vein, Right A Brachial Vein, Left B Basilic Vein, Right C Basilic Vein, Left D Cephalic Vein, Right F Cephalic Vein, Left G Hand Vein, Right H Hand Vein, Left L Intracranial Vein M Internal Jugular Vein, Right N Internal Jugular Vein, Left P External Jugular Vein, Right Q External Jugular Vein, Left R Vertebral Vein, Right S Vertebral Vein, Left T Face Vein, Right V Face Vein, Left Y Upper Vein	0 Open 3 Percutaneous 4 Percutaneous Endoscopic	Z No Device	Z No Qualifier

0 Medical and Surgical**5 Upper Veins****U Supplement:** Putting in or on biological or synthetic material that physically reinforces and/or augments the function of a portion of a body part

Body Part	Approach	Device	Qualifier
Character 4	Character 5	Character 6	Character 7
0 Azygos Vein 1 Hemiazygos Vein 3 Innominate Vein, Right 4 Innominate Vein, Left 5 Subclavian Vein, Right 6 Subclavian Vein, Left 7 Axillary Vein, Right 8 Axillary Vein, Left 9 Brachial Vein, Right A Brachial Vein, Left B Basilic Vein, Right C Basilic Vein, Left D Cephalic Vein, Right F Cephalic Vein, Left G Hand Vein, Right H Hand Vein, Left L Intracranial Vein M Internal Jugular Vein, Right N Internal Jugular Vein, Left P External Jugular Vein, Right Q External Jugular Vein, Left R Vertebral Vein, Right S Vertebral Vein, Left T Face Vein, Right V Face Vein, Left Y Upper Vein	0 Open 3 Percutaneous 4 Percutaneous Endoscopic	7 Autologous Tissue Substitute J Synthetic Substitute K Nonautologous Tissue Substitute	Z No Qualifier

Appendix A: Root Operations Definitions

0 - Medical and Surgical		
Value	Root Operation	Definition/Explanation
0	Alteration	Definition: Modifying the anatomic structure of a body part without affecting the function of the body part Explanation: Principal purpose is to improve appearance Includes/Examples: Face lift, breast augmentation
1	Bypass	Definition: Altering the route of passage of the contents of a tubular body part Explanation: Rerouting contents of a body part to a downstream area of the normal route, to a similar route and body part, or to an abnormal route and dissimilar body part. Includes one or more anastomoses, with or without the use of a device. Includes/Examples: Coronary artery bypass, colostomy formation
2	Change	Definition: Taking out or off a device from a body part and putting back an identical or similar device in or on the same body part without cutting or puncturing the skin or a mucous membrane Explanation: All CHANGE procedures are coded using the approach EXTERNAL Includes/Examples: Urinary catheter change, gastrostomy tube change
3	Control	Definition: Stopping, or attempting to stop, postprocedural or other acute bleeding Includes/Examples: Control of post-prostatectomy hemorrhage, control of intracranial subdural hemorrhage, control of bleeding duodenal ulcer, control of retroperitoneal hemorrhage
4	Creation	Definition: Putting in or on biological or synthetic material to form a new body part that to the extent possible replicates the anatomic structure or function of an absent body part Explanation: Used for gender reassignment surgery and corrective procedures in individuals with congenital anomalies Includes/Examples: Creation of vagina in a male, creation of right and left atrioventricular valve from common atrioventricular valve
5	Destruction	Definition: Physical eradication of all or a portion of a body part by the direct use of energy, force, or a destructive agent Explanation: None of the body part is physically taken out Includes/Examples: Fulguration of rectal polyp, cautery of skin lesion
6	Detachment	Definition: Cutting off all or a portion of the upper or lower extremities Explanation: The body part value is the site of the detachment, with a qualifier if applicable to further specify the level where the extremity was detached Includes/Examples: Below knee amputation, disarticulation of shoulder
7	Dilation	Definition: Expanding an orifice or the lumen of a tubular body part Explanation: The orifice can be a natural orifice or an artificially created orifice. Accomplished by stretching a tubular body part using intraluminal pressure or by cutting part of the orifice or wall of the tubular body part Includes/Examples: Percutaneous transluminal angioplasty, internal urethrotomy
8	Division	Definition: Cutting into a body part, without draining fluids and/or gases from the body part, in order to separate or transect a body part Explanation: All or a portion of the body part is separated into two or more portions Includes/Examples: Spinal cordotomy, osteotomy
9	Drainage	Definition: Taking or letting out fluids and/or gases from a body part Explanation: The qualifier DIAGNOSTIC is used to identify drainage procedures that are biopsies Includes/Examples: Thoracentesis, incision and drainage
B	Excision	Definition: Cutting out or off, without replacement, a portion of a body part Explanation: The qualifier DIAGNOSTIC is used to identify excision procedures that are biopsies Includes/Examples: Partial nephrectomy, liver biopsy

0 - Medical and Surgical continued on next page

Device Term	ICD-10-PCS Value
Bone screw (interlocking) (lag) (pedicle) (recessed)	Internal Fixation Device in Head and Facial Bones
	Internal Fixation Device in Upper Bones
	Internal Fixation Device in Lower Bones
Bovine pericardial valve	Zooplastic Tissue in Heart and Great Vessels
Bovine pericardium graft	Zooplastic Tissue in Heart and Great Vessels
Brachytherapy seeds	Radioactive Element
BRYAN® Cervical Disc System	Synthetic Substitute
BVS 5000® Ventricular Assist Device	Short-term External Heart Assist System in Heart and Great Vessels
Cardiac contractility modulation lead	Cardiac Lead in Heart and Great Vessels
Cardiac event recorder	Monitoring Device
Cardiac resynchronization therapy (CRT) lead	Cardiac Lead, Pacemaker for Insertion in Heart and Great Vessels
	Cardiac Lead, Defibrillator for Insertion in Heart and Great Vessels
CardioMEMS® pressure sensor	Monitoring Device, Pressure Sensor for Insertion in Heart and Great Vessels
Carmat total artificial heart (TAH)	Biologic with Synthetic Substitute, Autoregulated Electrohydraulic for Replacement in Heart and Great Vessels
Carotid (artery) sinus (baroreceptor) lead	Stimulator Lead in Upper Arteries
Carotid WALLSTENT® Monorail® Endoprosthesis	Intraluminal Device
Centrimag® Blood Pump	Short-term External Heart Assist System in Heart and Great Vessels
Ceramic on ceramic bearing surface	Synthetic Substitute, Ceramic for Replacement in Lower Joints
Cesium-131 Collagen Implant	Radioactive Element, Cesium-131 Collagen Implant for Insertion in Central Nervous System and Cranial Nerves
CivaSheet®	Radioactive Element
Clamp and rod internal fixation system (CRIF)	Internal Fixation Device in Upper Bones
	Internal Fixation Device in Lower Bones
COALESCE® radiolucent interbody fusion device	Interbody Fusion Device in Lower Joints
	Interbody Fusion Device in Upper Joints
CoAxia NeuroFlo™ catheter	Intraluminal Device
Cobalt/chromium head and polyethylene socket	Synthetic Substitute, Metal on Polyethylene for Replacement in Lower Joints

Device Term	ICD-10-PCS Value
Cobalt/chromium head and socket	Synthetic Substitute, Metal for Replacement in Lower Joints
Cochlear implant (CI), multiple channel (electrode)	Hearing Device, Multiple Channel Cochlear Prosthesis for Insertion in Ear, Nose, Sinus
Cochlear implant (CI), single channel (electrode)	Hearing Device, Single Channel Cochlear Prosthesis for Insertion in Ear, Nose, Sinus
COGNIS® CRT-D	Cardiac Resynchronization Defibrillator Pulse Generator for Insertion in Subcutaneous Tissue and Fascia
COHERE® radiolucent interbody fusion device	Interbody Fusion Device in Lower Joints
	Interbody Fusion Device in Upper Joints
Colonic Z-Stent®	Intraluminal Device
Complete® (SE) stent	Intraluminal Device
Concerto® II CRT-D	Cardiac Resynchronization Defibrillator Pulse Generator for Insertion in Subcutaneous Tissue and Fascia
CONSERVE® PLUS Total Resurfacing Hip System	Resurfacing Device in Lower Joints
Consulta® CRT-D	Cardiac Resynchronization Defibrillator Pulse Generator for Insertion in Subcutaneous Tissue and Fascia
Consulta® CRT-P	Cardiac Resynchronization Pacemaker Pulse Generator for Insertion in Subcutaneous Tissue and Fascia
CONTAK RENEWAL® 3 RF (HE) CRT-D	Cardiac Resynchronization Defibrillator Pulse Generator for Insertion in Subcutaneous Tissue and Fascia
Contegra® Pulmonary Valved Conduit	Zooplastic Tissue in Heart and Great Vessels
Continuous Glucose Monitoring (CGM) device	Monitoring Device
Cook Biodesign® Fistula Plug(s)	Nonautologous Tissue Substitute
Cook Biodesign® Hernia Graft(s)	Nonautologous Tissue Substitute
Cook Biodesign® Layered Graft(s)	Nonautologous Tissue Substitute
Cook Zenapro™ Layered Graft(s)	Nonautologous Tissue Substitute
Cook Zenith® AAA Endovascular Graft	Intraluminal Device
Cook Zenith® Fenestrated AAA Endovascular Graft	Intraluminal Device, Branched or Fenestrated, One or Two Arteries for Restriction in Lower Arteries
	Intraluminal Device, Branched or Fenestrated, Three or More Arteries for Restriction in Lower Arteries
CoreValve™ transcatheter aortic valve	Zooplastic Tissue in Heart and Great Vessels

Appendix D: Device Aggregation Table

Specific Device	For Operation	In Body System	General Device
Autologous Arterial Tissue	All applicable	Heart and Great Vessels	7 Autologous Tissue Substitute
		Lower Arteries	
		Lower Veins	
		Upper Arteries	
		Upper Veins	
Autologous Venous Tissue	All applicable	Heart and Great Vessels	7 Autologous Tissue Substitute
		Lower Arteries	
		Lower Veins	
		Upper Arteries	
		Upper Veins	
Cardiac Lead, Defibrillator	Insertion	Heart and Great Vessels	M Cardiac Lead
Cardiac Lead, Pacemaker	Insertion	Heart and Great Vessels	M Cardiac Lead
Cardiac Resynchronization Defibrillator Pulse Generator	Insertion	Subcutaneous Tissue and Fascia	P Cardiac Rhythm Related Device
Cardiac Resynchronization Pacemaker Pulse Generator	Insertion	Subcutaneous Tissue and Fascia	P Cardiac Rhythm Related Device
Contractility Modulation Device	Insertion	Subcutaneous Tissue and Fascia	P Cardiac Rhythm Related Device
Defibrillator Generator	Insertion	Subcutaneous Tissue and Fascia	P Cardiac Rhythm Related Device
Epiretinal Visual Prosthesis	All applicable	Eye	J Synthetic Substitute
External Fixation Device, Hybrid	Insertion	Lower Bones	5 External Fixation Device
		Upper Bones	
External Fixation Device, Hybrid	Reposition	Lower Bones	5 External Fixation Device
		Upper Bones	
External Fixation Device, Limb Lengthening	Insertion	Lower Bones	5 External Fixation Device
		Upper Bones	
External Fixation Device, Monoplanar	Insertion	Lower Bones	5 External Fixation Device
		Upper Bones	
External Fixation Device, Monoplanar	Reposition	Lower Bones	5 External Fixation Device
		Upper Bones	
External Fixation Device, Ring	Insertion	Lower Bones	5 External Fixation Device
		Upper Bones	
External Fixation Device, Ring	Reposition	Lower Bones	5 External Fixation Device
		Upper Bones	
Hearing Device, Bone Conduction	Insertion	Ear, Nose, Sinus	S Hearing Device
Hearing Device, Multiple Channel Cochlear Prosthesis	Insertion	Ear, Nose, Sinus	S Hearing Device
Hearing Device, Single Channel Cochlear Prosthesis	Insertion	Ear, Nose, Sinus	S Hearing Device
Internal Fixation Device, Intramedullary	All applicable	Lower Bones	4 Internal Fixation Device
		Upper Bones	
Internal Fixation Device, Intramedullary Limb Lengthening	Insertion	Lower Bones	6 Internal Fixation Device, Intramedullary
		Upper Bones	
Internal Fixation Device, Rigid Plate	Insertion	Upper Bones	4 Internal Fixation Device
Internal Fixation Device, Rigid Plate	Reposition	Upper Bones	4 Internal Fixation Device

0: Medical and Surgical

4: Lower Arteries

Operation-Character 3	Body Part-Character 4	Approach-Character 5	Device-Character 6	Qualifier-Character 7
1 Bypass	0 Abdominal Aorta	0 Open	0 Drainage Device	0 Abdominal Aorta
5 Destruction	1 Celiac Artery	3 Percutaneous	1 Radioactive Element	0 Ultrasonic
7 Dilation	2 Gastric Artery	4 Percutaneous Endoscopic	2 Monitoring Device	1 Celiac Artery
9 Drainage	3 Hepatic Artery	X External	3 Infusion Device	1 Drug-Coated Balloon
B Excision	4 Splenic Artery		4 Intraluminal Device, Drug-eluting	2 Mesenteric Artery
C Extirpation	5 Superior Mesenteric Artery		5 Intraluminal Device, Drug-eluting, Two	3 Renal Artery, Right
F Fragmentation	6 Colic Artery, Right		6 Intraluminal Device, Drug-eluting, Three	4 Renal Artery, Left
H Insertion	7 Colic Artery, Left		7 Autologous Tissue Substitute	5 Renal Artery, Bilateral
J Inspection	8 Colic Artery, Middle		7 Intraluminal Device, Drug-eluting, Four or More	6 Bifurcation
L Occlusion	9 Renal Artery, Right		9 Autologous Venous Tissue	6 Common Iliac Artery, Right
N Release	A Renal Artery, Left		A Autologous Arterial Tissue	7 Common Iliac Artery, Left
P Removal	B Inferior Mesenteric Artery		C Extraluminal Device	8 Common Iliac Arteries, Bilateral
Q Repair	C Common Iliac Artery, Right		D Intraluminal Device	9 Internal Iliac Artery, Right
R Replacement	D Common Iliac Artery, Left		E Intraluminal Device, Branched or Fenestrated, One or Two Arteries	B Internal Iliac Artery, Left
S Reposition	E Internal Iliac Artery, Right		E Intraluminal Device, Two	C Internal Iliac Arteries, Bilateral
U Supplement	F Internal Iliac Artery, Left		F Intraluminal Device, Branched or Fenestrated, Three or More Arteries	D External Iliac Artery, Right
V Restriction	H External Iliac Artery, Right		F Intraluminal Device, Three	F External Iliac Artery, Left
W Revision	J External Iliac Artery, Left		G Intraluminal Device, Four or More	G External Iliac Arteries, Bilateral
	K Femoral Artery, Right		J Synthetic Substitute	H Femoral Artery, Right
	L Femoral Artery, Left		K Nonautologous Tissue Substitute	J Femoral Artery, Left
	M Popliteal Artery, Right		Y Other Device	J Temporary
	N Popliteal Artery, Left		Z No Device	K Femoral Arteries, Bilateral
	P Anterior Tibial Artery, Right			L Popliteal Artery
	Q Anterior Tibial Artery, Left			M Peroneal Artery
	R Posterior Tibial Artery, Right			N Posterior Tibial Artery
	S Posterior Tibial Artery, Left			P Foot Artery
	T Peroneal Artery, Right			Q Lower Extremity Artery
	U Peroneal Artery, Left			R Lower Artery
	V Foot Artery, Right			S Lower Extremity Vein
	W Foot Artery, Left			T Uterine Artery, Right
	Y Lower Artery			U Uterine Artery, Left
				V Prostatic Artery, Right
				W Prostatic Artery, Left
				X Diagnostic
				Z No Qualifier

Appendix F: Substance Key

Substance Term	ICD-10-PCS Value
ABECMA®	Idecabtagene Vicleucel Immunotherapy
ACTEMRA®	Tocilizumab
afami-cel	Afamitresgene Autoleucel Immunotherapy
AIGISRx® Antibacterial Envelope	Anti-Infective Envelope
Andexanet Alfa, Factor Xa Inhibitor Reversal Agent Andexxa	Coagulation Factor Xa, Inactivated
Angiotensin II	Synthetic Human Angiotensin II
Anti-SARS-CoV-2 hyperimmune globulin	Hyperimmune Globulin
Antibacterial Envelope (TYRX™) (AIGISRx) Antimicrobial envelope	Anti-Infective Envelope
AVYCAZ® (ceftazidime-avibactam)	Other Anti-infective
Axicabtagene Ciloeucel	Axicabtagene Ciloleucel Immunotherapy
AZEDRA®	Iobenguane I-131 Antineoplastic
beti-cel	Betibeglogene Autotemcel
Blinatumomab	Other Antineoplastic
BLINCYTO® (blinatumomab)	Other Antineoplastic
Bone morphogenetic protein 2 (BMP 2)	Recombinant Bone Morphogenetic Protein
Brexucabtagene Autoleucel	Brexucabtagene Autoleucel Immunotherapy
Breyanzi®	Lisocabtagene Maraleucel Immunotherapy
CARVYKTI™	Ciltacabtagene Autoleucel
Casirivimab (REGN10933) and Imdevimab (REGN10987)	REGN-COV2 Monoclonal Antibody
CBMA (Concentrated Bone Marrow Aspirate)	Other Substance
Ceftazidime-avibactam	Other Anti-infective
CERAMENT® G	Antibiotic-eluting Bone Void Filler
cilta-cel	Ciltacabtagene Autoleucel
Clolar®	Clofarabine
Coagulation Factor Xa, (Recombinant) Inactivated	Coagulation Factor Xa, Inactivated
CONTEPO™	Fosfomycin Anti-infective
COSELA™	Trilaciclib
CRESEMBA® (isavuconazonium sulfate)	Other Anti-infective
Darzalex Faspro®	Daratumumab and Hyaluronidase-fihj
DefenCath™	Taurolidine Anti-infective and Heparin Anticoagulant
Defitelio	Other Substance
DuraGraft® Endothelial Damage Inhibitor	Endothelial Damage Inhibitor
ELZONRIS™	Tagraxofusp-erzs Antineoplastic
ENSPRYNG™	Satralizumab-mwge
ERLEADA™	Apalutamide Antineoplastic
Factor Xa Inhibitor Reversal Agent, Andexanet Alfa	Coagulation Factor Xa, Inactivated
FETROJA®	Cefiderocol Anti-infective
Fosfomycin injection	Fosfomycin Anti-infective
Gammaglobulin	Globulin
GAMUNEX-C, for COVID-19 treatment	High-Dose Intravenous Immune Globulin
GIAPREZA™	Synthetic Human Angiotensin II
GS-5734	Remdesivir Anti-infective

Substance Term	ICD-10-PCS Value
hdIVIG (high-dose intravenous immunoglobulin), for COVID-19 treatment	High-Dose Intravenous Immune Globulin
Hemospray® Endoscopic Hemostat	Mineral-based Topical Hemostatic Agent
HIG (hyperimmune globulin), for COVID-19 treatment	Hyperimmune Globulin
High-dose intravenous immunoglobulin (hdIVIG), for COVID-19 treatment	High-Dose Intravenous Immune Globulin
hIVIG (hyperimmune intravenous immunoglobulin), for COVID-19 treatment	Hyperimmune Globulin
Human angiotensin II, synthetic	Synthetic Human Angiotensin II
Hyperimmune globulin	Globulin
Hyperimmune intravenous immunoglobulin (hIVIG), for COVID-19 treatment	Hyperimmune Globulin
Idarucizumab, Pradaxa®(dabigatran) reversal agent	Other Therapeutic Substance
Ide-cel	Idecabtagene Vicleucel Immunotherapy
Idecabtagene Vicleucel	Idecabtagene Vicleucel Immunotherapy
IGIV-C, for COVID-19 treatment	Hyperimmune Globulin
Imdevimab (REGN10987) and Casirivimab (REGN10933)	REGN-COV2 Monoclonal Antibody
IMFINZI®	Durvalumab Antineoplastic
IMI/REL	Imipenem-cilastatin-relebactam Anti-infective
Immunoglobulin	Globulin
INTERCEPT Blood System for Plasma Pathogen Reduced Cryoprecipitated Fibrinogen Complex	Pathogen Reduced Cryoprecipitated Fibrinogen Complex
INTERCEPT Fibrinogen Complex	Pathogen Reduced Cryoprecipitated Fibrinogen Complex
Iobenguane I-131, High Specific Activity (HSA)	Iobenguane I-131 Antineoplastic
Isavuconazole (isavuconazonium sulfate)	Other Anti-infective
Jakafi®	Ruxolitinib
Kcentra®	4-Factor Prothrombin Complex Concentrate
KEVZARA®	Sarilumab
KYMRIA®	Tisagenlecleucel Immunotherapy
Lifileucel	Lifileucel Immunotherapy
Lisocabtagene Maraleucel	Lisocabtagene Maraleucel Immunotherapy
LIVTENCITY™	Maribavir Anti-infective
LTX Regional Anticoagulant	Nafamostat Anticoagulant
MarrowStim™ PAD Kit for CBMA(Concentrated Bone Marrow Aspirate)	Other Substance
NA-1 (Nerinitide)	Nerinitide
Nesiritide	Human B-type Natriuretic Peptide
NexoBrid™	Bromelain-enriched Proteolytic Enzyme
Niyad™	Nafamostat Anticoagulant
NUZYRA™	Omadacycline Anti-infective
Octagam 10%, for COVID-19 treatment	High-Dose Intravenous Immune Globulin
Olumiant®	Baricitinib
OTL-101	Hematopoietic Stem/Progenitor Cells, Genetically Modified
Polyclonal hyperimmune globulin	Globulin
Praxbind® (idarucizumab), Pradaxa®(dabigatran) reversal agent	Other Therapeutic Substance
REBYOTA®	Broad Consortium Microbiota-based Live Biotherapeutic Suspension
RETHYMIC®	Engineered Allogeneic Thymus Tissue

Appendix G: Combination Clusters

Due to the nature of a specific procedure, the first code in the cluster needs to be reported with one or more of the additional codes listed for all codes to be considered valid. The example below is for insertion of a cardiac defibrillator lead into the right ventricle (highlighted code). The additional procedure describes the exact location of where the lead is inserted, which is required for correct reporting:

02HK0KZ

and 0JH609Z

You would need to review the first procedure in the combination/cluster to determine whether you need to report the additional code.

The CMS website also provides additional information on combinations/clusters.

02H60KZ and 0JH608Z	02H64KZ and 0JH638Z	02H74KZ and 0JH808Z	02HK0KZ and 0JH608Z	02HK3KZ and 0JH809Z	02HK4MZ and 0JH80AZ	02HL3KZ and 0JH839Z
02H60KZ and 0JH638Z	02H64KZ and 0JH808Z	02H74KZ and 0JH838Z	02HK0KZ and 0JH609Z	02HK3KZ and 0JH838Z	02HK4MZ and 0JH83AZ	02HL4KZ and 0JH608Z
02H60KZ and 0JH808Z	02H64KZ and 0JH838Z	02HA0RS and 02PA0RZ	02HK0KZ and 0JH638Z	02HK3KZ and 0JH839Z	02HL0KZ and 0JH608Z	02HL4KZ and 0JH609Z
02H60KZ and 0JH838Z	02H64MZ and 0JH60AZ	02HA0RS and 02PA3RZ	02HK0KZ and 0JH639Z	02HK3MZ and 0JH60AZ	02HL0KZ and 0JH609Z	02HL4KZ and 0JH638Z
02H60MZ and 0JH60AZ	02H64MZ and 0JH63AZ	02HA0RS and 02PA4RZ	02HK0KZ and 0JH808Z	02HK3MZ and 0JH63AZ	02HL0KZ and 0JH638Z	02HL4KZ and 0JH639Z
02H60MZ and 0JH63AZ	02H64MZ and 0JH80AZ	02HA0RZ and 02PA0RZ	02HK0KZ and 0JH809Z	02HK3MZ and 0JH80AZ	02HL0KZ and 0JH639Z	02HL4KZ and 0JH808Z
02H60MZ and 0JH80AZ	02H64MZ and 0JH83AZ	02HA0RZ and 02PA3RZ	02HK0KZ and 0JH838Z	02HK3MZ and 0JH83AZ	02HL0KZ and 0JH808Z	02HL4KZ and 0JH809Z
02H60MZ and 0JH83AZ	02H70KZ and 0JH608Z	02HA0RZ and 02PA4RZ	02HK0KZ and 0JH839Z	02HK4KZ and 0JH608Z	02HL0KZ and 0JH809Z	02HL4KZ and 0JH838Z
02H63KZ and 0JH608Z	02H70KZ and 0JH638Z	02HA3RS and 02PA0RZ	02HK0MZ and 0JH60AZ	02HK4KZ and 0JH609Z	02HL0KZ and 0JH838Z	02HL4KZ and 0JH839Z
02H63KZ and 0JH638Z	02H70KZ and 0JH808Z	02HA3RS and 02PA3RZ	02HK0MZ and 0JH63AZ	02HK4KZ and 0JH638Z	02HL0KZ and 0JH839Z	02RK0JZ and 02RL0JZ
02H63KZ and 0JH808Z	02H70KZ and 0JH838Z	02HA3RS and 02PA4RZ	02HK0MZ and 0JH80AZ	02HK4KZ and 0JH639Z	02HL3KZ and 0JH608Z	02WA0QZ and 02PA0RZ
02H63KZ and 0JH838Z	02H73KZ and 0JH608Z	02HA4RS and 02PA0RZ	02HK0MZ and 0JH83AZ	02HK4KZ and 0JH808Z	02HL3KZ and 0JH609Z	02WA0QZ and 02PA3RZ
02H63MZ and 0JH60AZ	02H73KZ and 0JH638Z	02HA4RS and 02PA3RZ	02HK3KZ and 0JH608Z	02HK4KZ and 0JH809Z	02HL3KZ and 0JH638Z	02WA0QZ and 02PA4RZ
02H63MZ and 0JH63AZ	02H73KZ and 0JH808Z	02HA4RS and 02PA4RZ	02HK3KZ and 0JH609Z	02HK4KZ and 0JH838Z	02HL3KZ and 0JH639Z	02WA0RZ and 02PA0RZ
02H63MZ and 0JH80AZ	02H73KZ and 0JH838Z	02HA4RZ and 02PA0RZ	02HK3KZ and 0JH638Z	02HK4KZ and 0JH839Z	02HL3KZ and 0JH808Z	02WA0RZ and 02PA3RZ
02H63MZ and 0JH83AZ	02H74KZ and 0JH608Z	02HA4RZ and 02PA3RZ	02HK3KZ and 0JH639Z	02HK4MZ and 0JH60AZ	02HL3KZ and 0JH809Z	02WA0RZ and 02PA4RZ
02H64KZ and 0JH608Z	02H74KZ and 0JH638Z	02HA4RZ and 02PA4RZ	02HK3KZ and 0JH808Z	02HK4MZ and 0JH63AZ	02HL3KZ and 0JH838Z	02WA3QZ and 02PA0RZ

Thank You for Your Contribution to the Hardship Fund



Thanks to your book purchase, AAPC will be able to help even more members who face financial difficulty through the Hardship Fund.

The Hardship Fund is a financial aid program created to assist our members with:

- ✓ **Maintaining their membership and certification through membership renewal dues, exam prep tools and more**
- ✓ **Registration for national or regional conferences**
- ✓ **Certain local chapter events**

All awards are based on the availability of funds and the applicant's ability to demonstrate reasonable hardship. A portion of each book sale goes to helping more applicants through their time of need. We appreciate your contribution and your support for your fellow AAPC members.

To learn more about the Hardship Fund and its efforts or apply for financial assistance, **visit aapc.com**.



2024 ICD-10-PCS EXPERT



9 781646 318209

ISBN: 978-1-646318-209

E-Book ISBN: 978-1-646318-254