

A

AAT (alpha-1 antitrypsin) deficiency 273.4
AAV (disease) (illness) (infection) — see Human immunodeficiency virus (disease) (illness) (infection)
Abactio — see Abortion, induced
Abactus venter — see Abortion, induced
Abarognosis 781.99
Abasia (-astasia) 307.9
 atactica 781.3
 choreic 781.3
 hysterical 300.11
 paroxysmal trepidant 781.3
 spastic 781.3
 trembling 781.3
 trepidans 781.3
Abderhalden-Kaufmann-Lignac syndrome (cystinosis) 270.0
Abdomen, abdominal — see also condition
 accordion 306.4
 acute 789.0 **■**
 angina 557.1
 burst 868.00
 convulsive equivalent (see also Epilepsy) 345.5 **■**
 heart 746.87
 muscle deficiency syndrome 756.79
 obstipum 756.79
Abdominalgia 789.0 **■**
 periodic 277.31
Abduction contracture, hip or other joint — see Contraction, joint
Abercrombie's syndrome (amyloid degeneration) 277.39
Aberrant (congenital) — see also Malposition, congenital
 adrenal gland 759.1
 blood vessel NEC 747.60
 arteriovenous NEC 747.60
 cerebrovascular 747.81
 gastrointestinal 747.61
 lower limb 747.64
 renal 747.62
 spinal 747.82
 upper limb 747.63
 breast 757.6
 endocrine gland NEC 759.2
 gastrointestinal vessel (peripheral) 747.61
 hepatic duct 751.69
 lower limb vessel (peripheral) 747.64
 pancreas 751.7
 parathyroid gland 759.2
 peripheral vascular vessel NEC 747.60
 pituitary gland (pharyngeal) 759.2
 renal blood vessel 747.62
 sebaceous glands, mucous membrane, mouth 750.26
 spinal vessel 747.82
 spleen 759.0
 testis (descent) 752.51
 thymus gland 759.2
 thyroid gland 759.2
 upper limb vessel (peripheral) 747.63
Aberratio
 lactis 757.6
 testis 752.51
Aberration — see also Anomaly
 chromosome — see Anomaly, chromosome(s)
 distastial 368.9
 mental (see also Disorder, mental, nonpsychotic) 300.9
Abetalipoproteinemia 272.5
Abionarce 780.79
Abiotrophy 799.89
Ablatio
 placentae — see Placenta, ablatio
 retinae (see also Detachment, retina) 361.9
Ablation
 pituitary (gland) (with hypofunction) 253.7
 placenta — see Placenta, ablatio
 uterus 621.8
Ablepharia, ablepharon, ablephary 743.62
Ablepsia — see Blindness
Ablepsy — see Blindness
Ablutomania 300.3

Abnormal, abnormality, abnormalities — see also Anomaly
 acid-base balance 276.4
 fetus or newborn — see Distress, fetal
 adaptation curve, dark 368.63
 alveolar ridge 525.9
 amnion 658.9 **■**
 affecting fetus or newborn 762.9
 anatomical relationship NEC 759.9
 apertures, congenital, diaphragm 756.6
 auditory perception NEC 388.40
 autosomes NEC 758.5
 13 758.1
 18 758.2
 21 or 22 758.0
 D₁ 758.1
 E₃ 758.2
 G 758.0
 ballistocardiogram 794.39
 basal metabolic rate (BMR) 794.7
 biosynthesis, testicular androgen 257.2
 blood level (of)
 cobalt 790.6
 copper 790.6
 iron 790.6
 lead 790.6
 lithium 790.6
 magnesium 790.6
 mineral 790.6
 zinc 790.6
 blood pressure
 elevated (without diagnosis of hypertension) 796.2
 low (see also Hypotension) 458.9
 reading (incidental) (isolated) (nonspecific) 796.3
 blood sugar 790.29
 bowel sounds 787.5
 breathing behavior — see Respiration
 caloric test 794.19
 cervix (acquired) NEC 622.9
 congenital 752.40
 in pregnancy or childbirth 654.6 **■**
 causing obstructed labor 660.2 **■**
 affecting fetus or newborn 763.1
 chemistry, blood NEC 790.6
 chest sounds 786.7
 chorion 658.9 **■**
 affecting fetus or newborn 762.9
 chromosomal NEC 758.89
 analysis, nonspecific result 795.2
 autosomes (see also Abnormal, autosomes NEC) 758.5
 fetal, (suspected) affecting management of pregnancy 655.1 **■**
 sex 758.81
 clinical findings NEC 796.4
 communication — see Fistula
 configuration of pupils 379.49
 coronary
 artery 746.85
 vein 746.9
 cortisol-binding globulin 255.8
 course, Eustachian tube 744.24
 creatinine clearance 794.4
 dentofacial NEC 524.9
 functional 524.50
 specified type NEC 524.89
 development, developmental NEC 759.9
 bone 756.9
 central nervous system 742.9
 direction, teeth 524.30
 Dynia (see also Defect, coagulation) 286.9
 Ebstein 746.2
 echocardiogram 793.2
 echoencephalogram 794.01
 echogram NEC — see Findings, abnormal, structure
 electrocardiogram (ECG) (EKG) 794.31
 electroencephalogram (EEG) 794.02
 electromyogram (EMG) 794.17
 ocular 794.14
 electro-oculogram (EOG) 794.12
 electroretinogram (ERG) 794.11
 erythrocytes 289.9

Abnormal, abnormality, abnormalities — see also Anomaly — continued
 erythrocytes — continued
 congenital, with perinatal jaundice 282.9 [774.0]
 Eustachian valve 746.9
 excitability under minor stress 301.9
 fat distribution 782.9
 feces 787.7
 fetal heart rate — see Distress, fetal
 fetus NEC
 affecting management of pregnancy — see Pregnancy, management affected by, fetal
 causing disproportion 653.7 **■**
 affecting fetus or newborn 763.1
 causing obstructed labor 660.1 **■**
 affecting fetus or newborn 763.1
 findings without manifest disease — see Findings, abnormal
 fluid
 amniotic 792.3
 cerebrospinal 792.0
 peritoneal 792.9
 pleural 792.9
 synovial 792.9
 vaginal 792.9
 forces of labor NEC 661.9 **■**
 affecting fetus or newborn 763.7
 form, teeth 520.2
 function studies
 auditory 794.15
 bladder 794.9
 brain 794.00
 cardiovascular 794.30
 endocrine NEC 794.6
 kidney 794.4
 liver 794.8
 nervous system
 central 794.00
 peripheral 794.19
 oculomotor 794.14
 pancreas 794.9
 placenta 794.9
 pulmonary 794.2
 retina 794.11
 special senses 794.19
 spleen 794.9
 thyroid 794.5
 vestibular 794.16
 gait 781.2
 hysterical 300.11
 gastrin secretion 251.5
 globulin
 cortisol-binding 255.8
 thyroid-binding 246.8
 glucagon secretion 251.4
 glucose 790.29
 in pregnancy, childbirth, or puerperium 648.8 **■**
 fetus or newborn 775.0
 non-fasting 790.29
 gravitational (G) forces or states 994.9
 hair NEC 704.2
 hard tissue formation in pulp 522.3
 head movement 781.0
 heart
 rate
 fetus, affecting liveborn infant
 before the onset of labor 763.81
 during labor 763.82
 unspecified as to time of onset 763.83
 intrauterine
 before the onset of labor 763.81
 during labor 763.82
 unspecified as to time of onset 763.83
 newborn
 before the onset of labor 763.81
 during labor 763.82
 unspecified as to time of onset 763.83
 shadow 793.2
 sounds NEC 785.3

Abnormal, abnormality, abnormalities — see also Anomaly — continued
 hemoglobin (see also Disease, hemoglobin) 282.7
 trait — see Trait, hemoglobin, abnormal
 hemorrhage, uterus — see Hemorrhage, uterus
 histology NEC 795.4
 increase
 in
 appetite 783.6
 development 783.9
 involuntary movement 781.0
 jaw closure 524.51
 karyotype 795.2
 knee jerk 796.1
 labor NEC 661.9 **■**
 affecting fetus or newborn 763.7
 laboratory findings — see Findings, abnormal
 length, organ or site, congenital — see Distortion
 liver function test 790.6
 loss of height 781.91
 loss of weight 783.21
 lung shadow 793.1
 mammogram 793.80
 calcification 793.89
 calculus 793.89
 microcalcification 793.81
 Mantoux test 795.5
 membranes (fetal)
 affecting fetus or newborn 762.9
 complicating pregnancy 658.8 **■**
 menstruation — see Menstruation
 metabolism (see also condition) 783.9
 movement 781.0
 disorder NEC 333.90
 sleep related, unspecified 780.58
 specified NEC 333.99
 head 781.0
 involuntary 781.0
 specified type NEC 333.99
 muscle contraction, localized 728.85
 myoglobin (Aberdeen) (Annapolis) 289.9
 narrowness, eyelid 743.62
 optokinetic response 379.57
 organs or tissues of pelvis NEC
 in pregnancy or childbirth 654.9 **■**
 affecting fetus or newborn 763.89
 causing obstructed labor 660.2 **■**
 affecting fetus or newborn 763.1
 origin — see Malposition, congenital
 palmar creases 757.2
 Papanicolaou (smear)
 anus 796.70
 with
 atypical squamous cells
 cannot exclude high grade
 squamous intraepithelial
 lesion (ASC-H) 796.72
 of undetermined significance
 (ASC-US) 796.71
 cytologic evidence of malignancy
 796.76
 high grade squamous intraepithelial
 lesion (HGSIL) 796.74
 low grade squamous intraepithelial
 lesion (LGSIL) 796.73
 glandular 796.70
 specified finding NEC 796.79
 cervix 795.00
 with
 atypical squamous cells
 cannot exclude high grade
 squamous intraepithelial
 lesion (ASC-H) 795.02
 of undetermined significance
 (ASC-US) 795.01
 cytologic evidence of malignancy
 795.06
 high grade squamous intraepithelial
 lesion (HGSIL) 795.04
 low grade squamous intraepithelial
 lesion (LGSIL) 795.03
 nonspecific finding NEC 795.09
 other site 796.9

00.2-00.48

PROCEDURES AND INTERVENTIONS, NEC

Tabular List

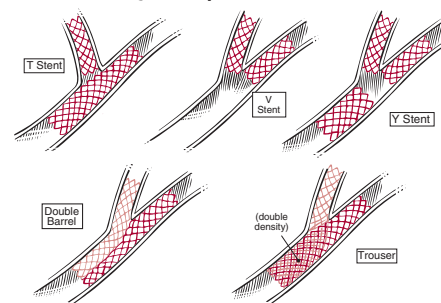
- ✓4th** 00.2 **Intravascular imaging of blood vessels**
 Note: Real-time imaging of lumen of blood vessel(s) using sound waves
 Endovascular ultrasonography
 Intravascular [ultrasound] imaging of blood vessels
 Intravascular ultrasound (IVUS)
 ▶Virtual histology intravascular ultrasound [VH-IVUS] ◀
 Code also any synchronous diagnostic or therapeutic procedures
EXCLUDES adjunct vascular system procedures, number of vessels treated (00.40-00.43)
 diagnostic procedures on blood vessels (38.21-38.29)
 diagnostic ultrasound of peripheral vascular system (88.77)
 ▶intravascular imaging of vessel(s) by OCT (38.24-38.25) ◀
 magnetic resonance imaging (MRI) (88.91-88.97)
 therapeutic ultrasound (00.01-00.09)
- 00.21 **Intravascular imaging of extracranial cerebral vessels**
 Common carotid vessels and branches
 Intravascular ultrasound (IVUS), extracranial cerebral vessels
EXCLUDES diagnostic ultrasound (non-invasive) of head and neck (88.71)
- 00.22 **Intravascular imaging of intrathoracic vessels**
 Aorta and aortic arch
 Intravascular ultrasound (IVUS), intrathoracic vessels
 Vena cava (superior) (inferior)
EXCLUDES diagnostic ultrasound (non-invasive) of other sites of thorax (88.73)
- 00.23 **Intravascular imaging of peripheral vessels**
 Imaging of:
 vessels of arm(s)
 vessels of leg(s)
 Intravascular ultrasound (IVUS), peripheral vessels
EXCLUDES diagnostic ultrasound (non-invasive) of peripheral vascular system (88.77)
- 00.24 **Intravascular imaging of coronary vessels**
 Intravascular ultrasound (IVUS), coronary vessels
EXCLUDES diagnostic ultrasound (non-invasive) of heart (88.72)
 intracardiac echocardiography [ICE] (ultrasound of heart chamber(s)) (37.28)
 AHA: 3Q, '06, 8
- 00.25 **Intravascular imaging of renal vessels**
 Intravascular ultrasound (IVUS), renal vessels
 Renal artery
EXCLUDES diagnostic ultrasound (non-invasive) of urinary system (88.75)
- 00.28 **Intravascular imaging, other specified vessel(s)**
- 00.29 **Intravascular imaging, unspecified vessel(s)**
- ✓4th** 00.3 **Computer assisted surgery [CAS]**
 CT-free navigation
 Image guided navigation (IGN)
 Image guided surgery (IGS)
 Imageless navigation
 That without the use of robotic(s) technology
 Code also diagnostic or therapeutic procedure
EXCLUDES robotic assisted procedures (17.41-17.49)
 stereotactic frame application only (93.59)
TIP: CAS includes three key activities: surgical planning, registration, and navigation; typically used in brain; cranial; ear, nose and throat (ENT); spinal; and orthopaedic surgeries.
- 00.31 **Computer assisted surgery with CT/CTA**
 AHA: 4Q, '04, 113
- 00.32 **Computer assisted surgery with MR/MRA**
 AHA: 4Q, '04, 113
- 00.33 **Computer assisted surgery with fluoroscopy**

- 00.34 **Imageless computer assisted surgery**
- 00.35 **Computer assisted surgery with multiple datasets**
- 00.39 **Other computer assisted surgery**
 Computer assisted surgery NOS

- ✓4th** 00.4 **Adjunct vascular system procedures**
 Note: These codes can apply to both coronary and peripheral vessels. These codes are to be used in conjunction with other therapeutic procedure codes to provide additional information on the number of vessels upon which a procedure was performed and/or the number of stents inserted. As appropriate, code both the number of vessels operated on (00.40-00.43), and the number of stents inserted (00.45-00.48).
 Code also any:
 angioplasty or atherectomy (00.61-00.62, 00.66, 39.50)
 endarterectomy (38.10-38.18)
 insertion of vascular stent(s) (00.55, 00.63-00.65, 36.06-36.07, 39.90)
 other removal of coronary artery obstruction (36.09)
 AHA: 4Q, '05, 101

- 00.40 **Procedure on single vessel**
 Number of vessels, unspecified
EXCLUDES (aorto)coronary bypass (36.10-36.19)
 intravascular imaging of blood vessels (00.21-00.29)
 AHA: ▶2Q, '09, 12; ◀1Q, '07, 17; 3Q, '06, 8; 4Q, '05, 71, 106
- 00.41 **Procedure on two vessels**
EXCLUDES (aorto)coronary bypass (36.10-36.19)
 intravascular imaging of blood vessels (00.21-00.29)
 AHA: 4Q, '06, 119; 4Q, '05, 105
- 00.42 **Procedure on three vessels**
EXCLUDES (aorto)coronary bypass (36.10-36.19)
 intravascular imaging of blood vessels (00.21-00.29)
- 00.43 **Procedure on four or more vessels**
EXCLUDES (aorto)coronary bypass (36.10-36.19)
 intravascular imaging of blood vessels (00.21-00.29)
- 00.44 **Procedure on vessel bifurcation**
 Note: This code is to be used to identify the presence of a vessel bifurcation; it does not describe a specific bifurcation stent. Use this code only once per operative episode, irrespective of the number of bifurcations in vessels.
 AHA: 4Q, '06, 119
- 00.45 **Insertion of one vascular stent**
 Number of stents, unspecified
 AHA: 4Q, '05, 71
- 00.46 **Insertion of two vascular stents**
 AHA: ▶2Q, '09, 12; ◀4Q, '05, 105-106
- 00.47 **Insertion of three vascular stents**
 AHA: 4Q, '06, 119
- 00.48 **Insertion of four or more vascular stents**

Stenting Techniques on Vessel Bifurcation



00.49 SuperSaturated oxygen therapy
 Aqueous oxygen (AO) therapy
 SSO₂
 SuperOxygenation infusion therapy
 Code also any:
 injection or infusion of thrombolytic agent (99.10)
 insertion of coronary artery stent(s) (36.06-36.07)
 intracoronary artery thrombolytic infusion (36.04)
 number of vascular stents inserted (00.45-00.48)
 number of vessels treated (00.40-00.43)
 open chest coronary artery angioplasty (36.03)
 other removal of coronary obstruction (36.09)
 percutaneous transluminal coronary angioplasty [PTCA] (00.66)
 procedure on vessel bifurcation (00.44)
EXCLUDES other oxygen enrichment (93.96)
 other perfusion (39.97)
DEF: ▶ Method of reducing myocardial tissue damage via infusion of super-oxygenated blood directly to oxygen-deprived myocardial tissue in MI patients; typically performed as an adjunct procedure during PTCA or stent insertion. ◀
AHA: ▶ 4Q, '08, 162 ◀

4th 00.5 Other cardiovascular procedures
AHA: 4Q, '02, 95

00.50 Implantation of cardiac resynchronization pacemaker without mention of defibrillation, total system [CRT-P]
 Note: Device testing during procedure — omit code
 Biventricular pacemaker
 Biventricular pacing without internal cardiac defibrillator
 BiV pacemaker
 Implantation of cardiac resynchronization (biventricular) pulse generator pacing device, formation of pocket, transvenous leads including placement of lead into left ventricular coronary venous system, and intraoperative procedures for evaluation of lead signals
 That with CRT-P generator and one or more leads
EXCLUDES implantation of cardiac resynchronization defibrillator, total system [CRT-D] (00.51)
 insertion or replacement of any type pacemaker device (37.80-37.87)
 replacement of cardiac resynchronization: defibrillator, pulse generator only [CRT-D] (00.54)
 pacemaker, pulse generator only [CRT-P] (00.53)
DEF: Cardiac resynchronization pacemaker: CRT-P, or bi-ventricular pacing, adds a third lead to traditional pacemaker designs that connects to the left ventricle. The device provides electrical stimulation and coordinates ventricular contractions to improve cardiac output.
AHA: 3Q, '05, 3-9; 4Q, '02, 100

00.51 Implantation of cardiac resynchronization defibrillator, total system [CRT-D]
 Note: Device testing during procedure — omit code
 BiV defibrillator
 Biventricular defibrillator
 Biventricular pacing with internal cardiac defibrillator
 BiV ICD
 BiV pacemaker with defibrillator
 BiV pacing with defibrillator
 Implantation of cardiac resynchronization (biventricular) pulse generator with defibrillator [AICD], formation of pocket, transvenous leads, including placement of lead into left ventricular coronary venous system, intraoperative procedures for evaluation of lead signals, and obtaining defibrillator threshold measurements
 That with CRT-D generator and one or more leads
EXCLUDES implantation of cardiac resynchronization pacemaker, total system [CRT-P] (00.50)
 implantation or replacement of automatic cardioverter/defibrillator, total system [AICD] (37.94)
 replacement of cardiac resynchronization defibrillator, pulse generator only [CRT-D] (00.54)
AHA: ▶ 3Q, '08, 18; ◀ 1Q, '07, 16, 17; 3Q, '05, 3-9; 4Q, '02, 99, 100
TIP: If an angiogram or a venogram is performed in conjunction with CRT-D placement, it should be coded separately; refer to subcategories 88.5 and 88.6.

00.52 Implantation or replacement of transvenous lead [electrode] into left ventricular coronary venous system
EXCLUDES implantation of cardiac resynchronization: defibrillator, total system [CRT-D] (00.51)
 pacemaker, total system [CRT-P] (00.50)
 initial insertion of transvenous lead [electrode] (37.70-37.72)
 replacement of transvenous atrial and/or ventricular lead(s) [electrodes] (37.76)

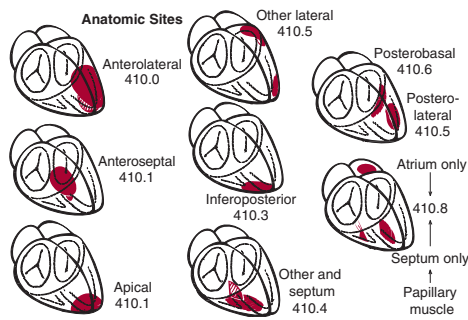
00.53 Implantation or replacement of cardiac resynchronization pacemaker, pulse generator only [CRT-P]
 Note: Device testing during procedure — omit code
 Implantation of CRT-P device with removal of any existing CRT-P or other pacemaker device
EXCLUDES implantation of cardiac resynchronization pacemaker, total system [CRT-P] (00.50)
 implantation or replacement of cardiac resynchronization defibrillator, pulse generator only [CRT-D] (00.54)
 insertion or replacement of any type pacemaker device (37.80-37.87)
AHA: 3Q, '05, 3-9

410.1–411.89

CIRCULATORY SYSTEM

Tabular List

Acute Myocardial Infarction



- § ✓^{5th} **410.1 Of other anterior wall** MCC 1
 [0-2] Infarction:
 anterior (wall) NOS } (with contiguous portion of
 anteroapical } intraventricular
 anteroseptal } septum)
 ST elevation myocardial infarction (STEMI) of other
 anterior wall
CC Excl: For code 410.11: See code 410.0
AHA: For code 410.11: 3Q, '03, 10
- § ✓^{5th} **410.2 Of inferolateral wall** MCC 1
 [0-2] ST elevation myocardial infarction (STEMI) of inferolateral
 wall
CC Excl: For code 410.21: See code 410.0
- § ✓^{5th} **410.3 Of inferoposterior wall** MCC 1
 [0-2] ST elevation myocardial infarction (STEMI) of
 inferoposterior wall
CC Excl: For code 410.31: See code 410.0
- § ✓^{5th} **410.4 Of other inferior wall** MCC 1
 [0-2] Infarction:
 diaphragmatic wall } (with contiguous portion of
 NOS } intraventricular
 inferior (wall) NOS } septum)
 ST elevation myocardial infarction (STEMI) of other inferior
 wall
CC Excl: For code 410.41: See code 410.0
AHA: 1Q, '00, 7, 26; 4Q, '99, 9; 3Q, '97, 10; **For code 410.41:** 2Q,
 '01, 8, 9
I21.19 STEMI involv oth coronary artery of inferior wall I-10
- § ✓^{5th} **410.5 Of other lateral wall** MCC 1
 [0-2] Infarction:
 apical-lateral
 basal-lateral
 high lateral
 posterolateral
 ST elevation myocardial infarction (STEMI) of other lateral
 wall
CC Excl: For code 410.51: See code 410.0
- § ✓^{5th} **410.6 True posterior wall infarction** MCC 1
 [0-2] Infarction:
 posterobasal
 strictly posterior
 ST elevation myocardial infarction (STEMI) of true
 posterior wall
CC Excl: For code 410.61: See code 410.0
- § ✓^{5th} **410.7 Subendocardial infarction** MCC 1
 [0-2] Non-ST elevation myocardial infarction (NSTEMI)
 Nontransmural infarction
CC Excl: For code 410.71: See code 410.0
AHA: 1Q, '00, 7; **For code 410.71:** 4Q, '05, 71; 2Q, '05, 19
I21.4 Non-ST elevation (NSTEMI) myocardial infarction I-10

- § ✓^{5th} **410.8 Of other specified sites** MCC 1
 [0-2] Infarction of:
 atrium
 papillary muscle
 septum alone
 ST elevation myocardial infarction (STEMI) of other
 specified sites
CC Excl: For code 410.81: See code 410.0
- § ✓^{5th} **410.9 Unspecified site** MCC 1
 [0-2] Acute myocardial infarction NOS
 Coronary occlusion NOS
 Myocardial infarction NOS
CC Excl: For code 410.91: See code 410.0
AHA: 1Q, '96, 17; 1Q, '92, 9; **For code 410.91:** 2Q, '05, 18;
 3Q, '02, 5
I21.3 ST elevation myocardial infarction of uns site I-10
- ✓^{4th} **411 Other acute and subacute forms of ischemic heart disease**
AHA: 4Q, '94, 55; 3Q, '91, 24
- 411.0 Postmyocardial infarction syndrome** CC
 Dressler's syndrome
DEF: Complication developing several days/weeks after
 myocardial infarction; symptoms include fever, leukocytosis,
 chest pain, pericarditis, pleurisy, and pneumonitis; tendency
 to recur.
CC Excl: 411.0, 411.81-411.89, 459.89-459.9
- 411.1 Intermediate coronary syndrome** CC
 Impending infarction
 Preinfarction angina
 Preinfarction syndrome
 Unstable angina
EXCLUDES *angina (pectoris) (413.9)*
decubitus (413.0)
DEF: A condition representing an intermediate stage between
 angina of effort and acute myocardial infarction. It is often
 documented by the physician as "unstable angina."
CC Excl: 398.91, 402.01, 402.11, 402.91, 404.01, 404.03, 404.11,
 404.13, 404.91, 404.93, 410.00-410.92, 411.1-411.89,
 413.0-414.00, 414.2-414.9, 428.0-428.1, 428.9, 459.89-459.9,
 785.50-785.51
AHA: 3Q, '07, 9; 4Q, '05, 105; 2Q, '04, 3; 1Q, '03, 12; 3Q, '01, 15;
 2Q, '01, 7, 9; 4Q, '98, 86; 2Q, '96, 10; 3Q, '91, 24; 1Q, '91, 14; 3Q,
 '90, 6; 4Q, '89, 10
TIP: Do not assign code 411.1 on the same episode of care as
 an acute myocardial infarction (category 410). Assign 411.1
 for accelerated angina.
I20.0 Unstable angina I-10
- ✓^{5th} **411.8 Other**
AHA: 3Q, '91, 18; 3Q, '89, 4
- 411.81 Acute coronary occlusion without myocardial infarction** CC
 Acute coronary (artery):
 embolism } without or not
 obstruction } resulting in
 occlusion } myocardial
 thrombosis } infarction
EXCLUDES *obstruction without infarction due to*
atherosclerosis
(414.00-414.07)
occlusion without infarction due to
atherosclerosis
(414.00-414.07)
DEF: Interrupted blood flow to a portion of the
 heart; without tissue death.
CC Excl: 410.00-411.89, 413.0-413.9, 414.8-414.9,
 459.89-459.9
AHA: 3Q, '91, 24; 1Q, '91, 14
- 411.89 Other** CC
 Coronary insufficiency (acute)
 Subendocardial ischemia
CC Excl: See code: 411.81
AHA: 3Q, '01, 14; 1Q, '92, 9

§ Requires fifth digit. Valid digits are in [brackets] under each code. See category 410 for codes and definitions.

N Newborn Age: 0

P Pediatric Age: 0-17

M Maternity Age: 12-55

A Adult Age: 15-124

MCC Major CC Condition

CC CC Condition

HIV HIV Related Dx

412 Old myocardial infarction

Healed myocardial infarction
Past myocardial infarction diagnosed on ECG [EKG] or other special investigation, but currently presenting no symptoms

AHA: 2Q, '03, 10; 2Q, '01, 9; 3Q, '98, 15; 2Q, '91, 22; 3Q, '90, 7

TIP: Assign for any acute myocardial infarction stated to be older than 8 weeks.

I25.2 Old myocardial infarction I-10

✓^{4th} **413 Angina pectoris**

DEF: Severe constricting pain in the chest, often radiating from the precordium to the left shoulder and down the arm, due to ischemia of the heart muscle; usually caused by coronary disease; pain is often precipitated by effort or excitement.

413.0 Angina decubitus CC

Nocturnal angina

DEF: Angina occurring only in the recumbent position.

CC Excl: 410.00-410.92, 411.1-411.89, 413.0-413.9, 414.8-414.9, 459.89-459.9

413.1 Prinzmetal angina CC

Variant angina pectoris

DEF: Angina occurring when patient is recumbent; associated with ST-segment elevations.

CC Excl: See code: 413.0

AHA: 3Q, '06, 23

413.9 Other and unspecified angina pectoris

Angina:	Anginal syndrome
NOS	Status anginosus
cardiac	Stenocardia
▶equivalent◀	Syncope anginosa
of effort	

▶Use additional code(s) for symptoms associated with angina equivalent◀

EXCLUDES preinfarction angina (411.1)

AHA: 2Q, '08, 16; 3Q, '02, 4; 3Q, '91, 16; 3Q, '90, 6

TIP: For patients with both angina and coronary artery disease, sequence the CAD (subcategory 414.0) code first.

I20.9 Angina pectoris unspecified I-10

✓^{4th} **414 Other forms of chronic ischemic heart disease**

EXCLUDES arteriosclerotic cardiovascular disease [ASCVD] (429.2) cardiovascular: arteriosclerosis or sclerosis (429.2) degeneration or disease (429.2)

✓^{5th} **414.0 Coronary atherosclerosis**

Arteriosclerotic heart disease [ASHD]

Atherosclerotic heart disease

Coronary (artery):

arteriosclerosis
arteritis or endarteritis
atheroma
sclerosis
stricture

Use additional code, if applicable, to identify chronic total occlusion of coronary artery (414.2)

EXCLUDES embolism of graft (996.72)
occlusion NOS of graft (996.72)
thrombus of graft (996.72)

DEF: A chronic condition marked by thickening and loss of elasticity of the coronary artery; caused by deposits of plaque containing cholesterol, lipid material and lipophages.

AHA: 2Q, '97, 13; 2Q, '95, 17; 4Q, '94, 49; 2Q, '94, 13; 1Q, '94, 6; 3Q, '90, 7

414.00 Of unspecified type of vessel, native or graft A

AHA: 1Q, '04, 24; 2Q, '03, 16; 3Q, '01, 15; 4Q, '99, 4; 3Q, '97, 15; 4Q, '96, 31

414.01 Of native coronary artery A

DEF: Plaque deposits in natural heart vessels.

AHA: 3Q, '08, 10; 2Q, '08, 16; 3Q, '06, 25; 4Q, '05, 71; 2Q, '04, 3; 4Q, '03, 108; 3Q, '03, 9, 14; 3Q, '02, 4-9; 3Q, '01, 15; 2Q, '01, 8, 9; 3Q, '97, 15; 2Q, '96, 10; 4Q, '96, 31

TIP: Assign for documentation of CAD NOS in a patient with no history of coronary artery bypass procedure.

I25.10 ASHD of native cor artery w/o angina pectoris I-10

414.02 Of autologous vein bypass graft CC A

DEF: Plaque deposit in grafted vein originating within patient.

CC Excl: 414.00-414.05, 414.07, 414.2-414.3

414.03 Of nonautologous biological bypass graft CC A

DEF: Plaque deposits in grafted vessel originating outside patient.

CC Excl: See code: 414.02

414.04 Of artery bypass graft CC A

Internal mammary artery

DEF: Plaque deposits in grafted artery originating within patient.

CC Excl: See code: 414.02

AHA: 4Q, '96, 31

414.05 Of unspecified type of bypass graft A

Bypass graft NOS

AHA: 3Q, '97, 15; 4Q, '96, 31

414.06 Of native coronary artery of transplanted heart CC

CC Excl: 414.00-414.07, 414.2-414.3

AHA: 4Q, '03, 60; 4Q, '02, 53

414.07 Of bypass graft (artery) (vein) of transplanted heart CC A

CC Excl: 414.00-414.06, 414.2-414.3

✓^{5th} **414.1 Aneurysm and dissection of heart**

AHA: 4Q, '02, 54

414.10 Aneurysm of heart (wall) CC

Aneurysm (arteriovenous):
mural
ventricular

CC Excl: 414.10-414.11, 414.19

414.11 Aneurysm of coronary vessels

Aneurysm (arteriovenous) of coronary vessels

DEF: Dilatation of all three-vessel wall layers forming a sac filled with blood.

AHA: 3Q, '03, 10; 1Q, '99, 17

414.12 Dissection of coronary artery MCC

DEF: A tear in the intimal arterial wall of a coronary artery resulting in the sudden intrusion of blood within the layers of the wall.

CC Excl: 414.12, 443.29, 447.2, 447.5-447.9

414.19 Other aneurysm of heart CC

Arteriovenous fistula, acquired, of heart

CC Excl: See code: 414.10

Arteries of the Heart

